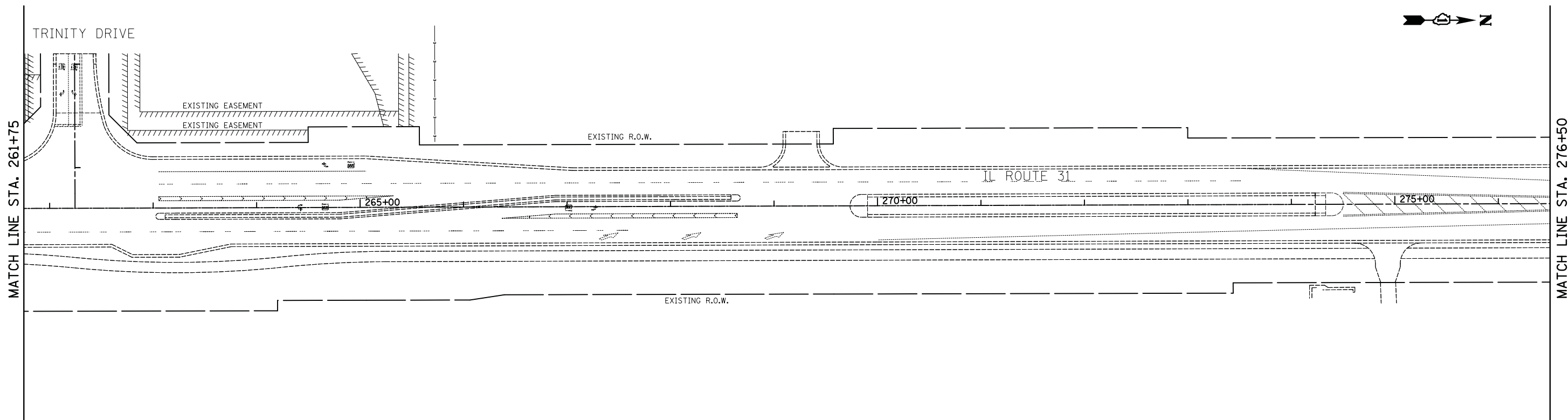


MATCH LINE STA. 261+75

**TEMPORARY INTERCONNECT NOTES**

1. THE WIRELESS INTERCONNECT SHALL BE INSTALLED PRIOR TO THE BEGINNING OF M.O.T. STAGE 1A. THE EXISTING FIBER OPTIC INTERCONNECT SHALL NOT BE DISCONNECTED AND REMOVED UNTIL THE WIRELESS INTERCONNECT IS INSTALLED AND OPERATING TO THE SATISFACTION OF THE ENGINEER.
2. A RADIO REPEATER MY BE REQUIRED TO MAINTAIN THE WIRELESS INTERCONNECT BETWEEN VIRGINIA ROAD AND JAMES A. RAKOW ROAD/CENTRAL PARK DRIVE, OR AS DIRECTED BY THE ENGINEER. IF A REPEATER IS REQUIRED, IT SHALL BE INSTALLED AS DIRECTED BY THE ENGINEER AND SHALL BE INCLUDED IN THE PAY ITEM "TEMPORARY WIRELESS INTERCONNECT, COMPLETE".
3. FOR INTERCONNECT QUANTITIES AND REMOVAL QUANTITIES, REFER TO THE SCHEDULE OF QUANTITIES LOCATED ON THE INTERCONNECT SCHEMATIC SHEET.



MATCH LINE STA. 261+75

MATCH LINE STA. 276+50  
(SEE SHEET NO. 2 OF 3)

FILE NAME = ... \2278NG-ts04.dgn	USER NAME = kwh	DESIGNED - BRD	REVISED -
Default	PLOT SCALE = 50.0000' / in.	DRAWN - MFB	REVISED -
	PLOT DATE = 8/5/2013	CHECKED - JJE	REVISED -
		DATE - 06/24/2013	REVISED -

**STATE OF ILLINOIS  
DEPARTMENT OF TRANSPORTATION**

**TEMPORARY INTERCONNECT PLAN  
IL ROUTE 31  
VIRGINIA ROAD TO RAKOW ROAD**

SCALE: 1" = 50' SHEET 1 OF 3 SHEETS STA. 247+00 TO STA. 276+50

F.A.U. RTE.	SECTION	COUNTY	TOTAL SHEETS	SHEET NO.
3887	18W&RS-5 (12)	MCHENRY	151	86
CONTRACT NO. 60V72				
FED. ROAD DIST. NO. 1 ILLINOIS FED. AID PROJECT				