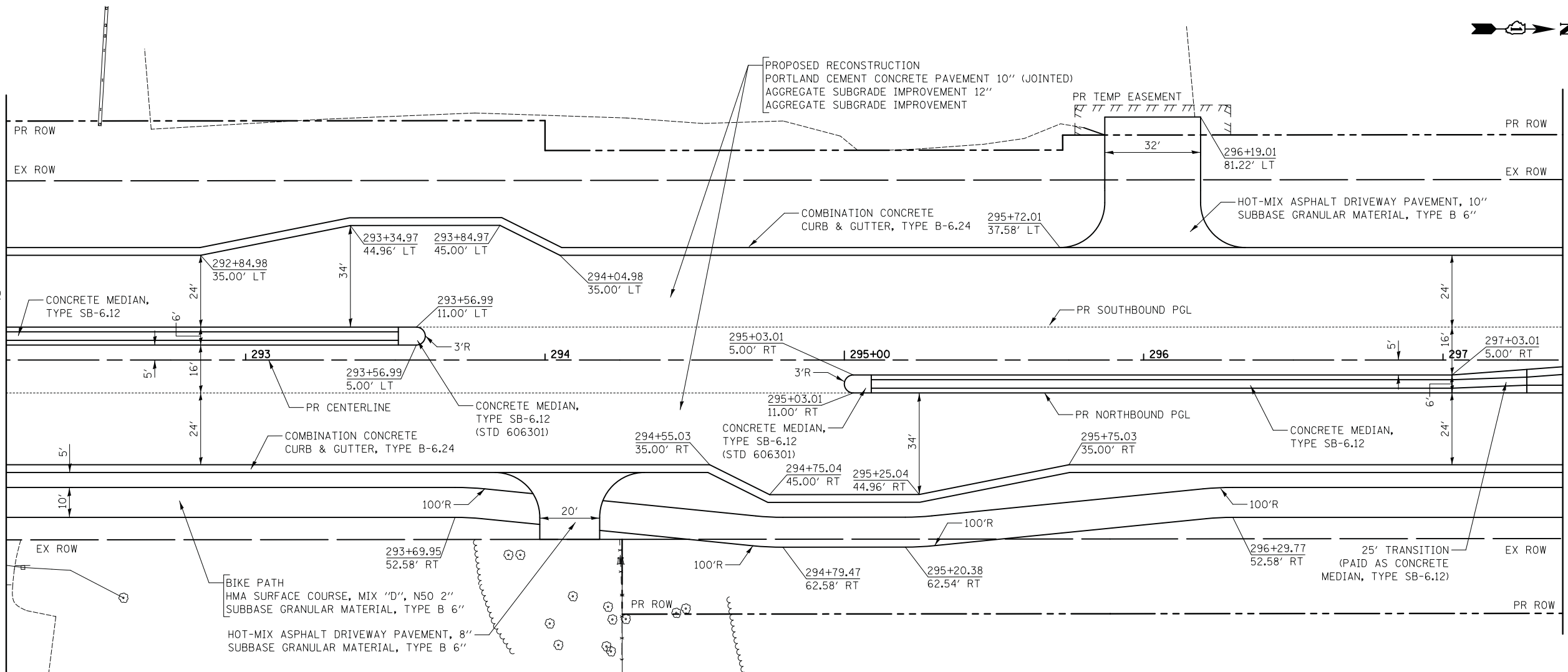


PLAN	SURVEYED	BY	DATE
	PLOTTED		
	GRADES CHECKED		
	STRUCTURE NOTATIONS CHECKED		
	NOTE BOOK NO.		
	CADD FILE NAME		

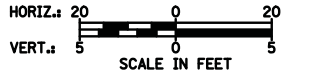
PROFILE	SURVEYED	BY	DATE
	PLOTTED		
	GRADES CHECKED		
	STRUCTURE NOTATIONS CHECKED		
	NOTE BOOK NO.		
	CADD FILE NAME		

MATCH LINE STA. 292+20
SEE SHEET NO. 41

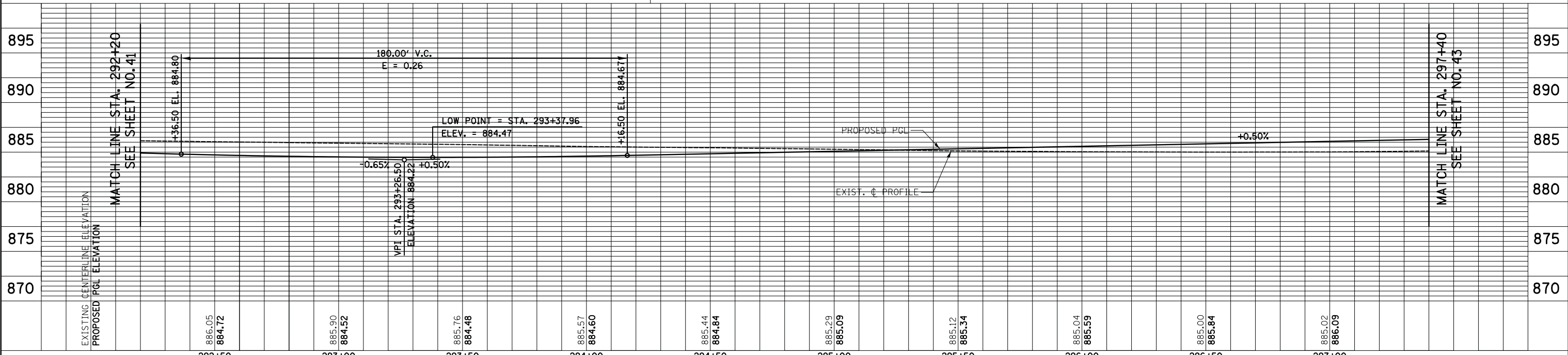
MATCH LINE STA. 297+40
SEE SHEET NO. 43



- NOTES:
- ALL DRIVEWAY RADII SHALL BE 15' UNLESS OTHERWISE NOTED



ILLINOIS ROUTE 31



FILE NAME = ...\\2278NG_P&P_05.dgn	USER NAME = kwh	DESIGNED - KWH	REVISED -	STATE OF ILLINOIS DEPARTMENT OF TRANSPORTATION	PLAN AND PROFILE	F.A.U. RTE. 3887	SECTION 18W&RS-5 (12)	COUNTY MCHENRY	TOTAL SHEETS 151	SHEET NO. 42	
	PLOT SCALE = 20.0000' / in.	CHECKED - GAB	REVISED -			SCALE: 1" = 20'	SHEET NO. 5 OF 10 SHEETS	STA. 292+20 TO STA. 297+40	CONTRACT NO. 60V72		
	PLOT DATE = 12/17/2013	DATE - 12/17/2013	REVISED -			FED. ROAD DIST. NO. 1 ILLINOIS FED. AID PROJECT					