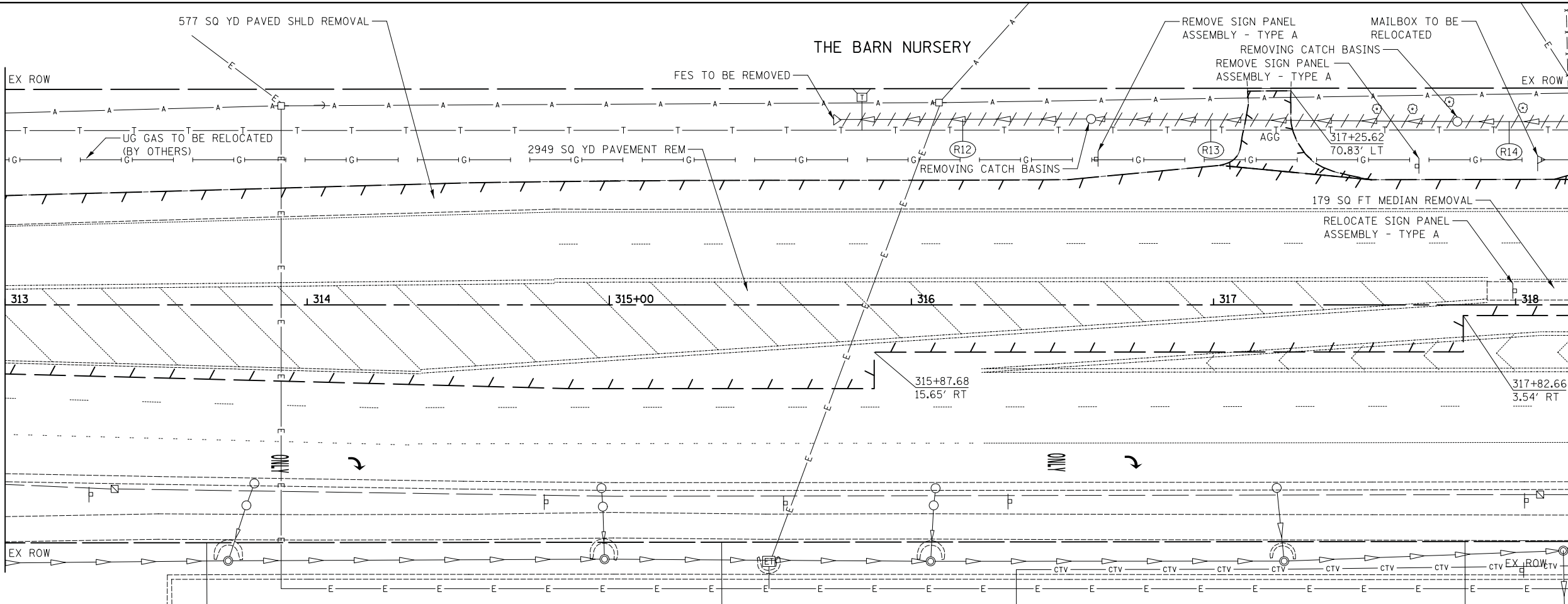


PLAN	SURVEYED	DATE
	PLOTTED	BY
	CHECKED	
	ALIGNED	
	FILED	
	CADD FILE NAME	
	NO.	

PROFILE	SURVEYED	DATE
	PLOTTED	BY
	CHECKED	
	GRADES	
	STRUCTURE	
	NOTATIONS	
	CHFD	
	NO.	

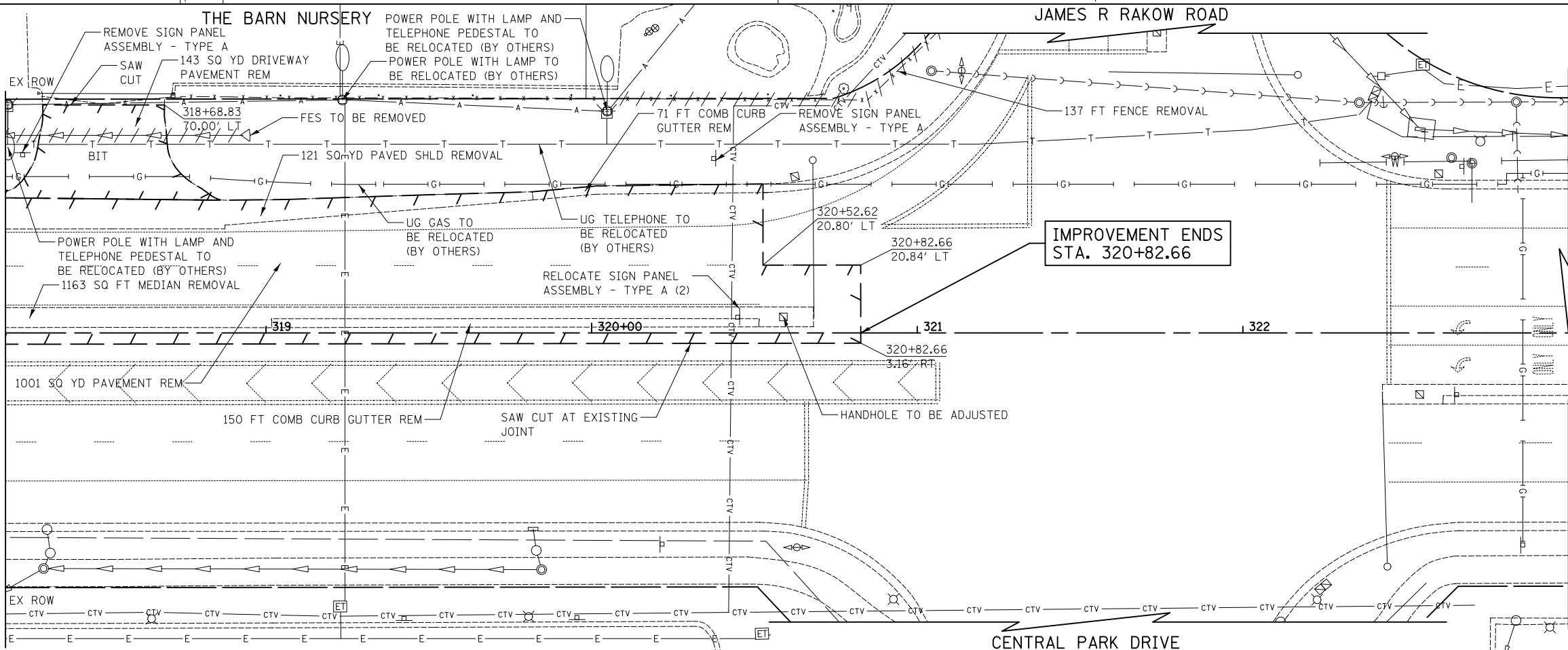
MATCH LINE STA. 313+00  
SEE SHEET NO. 36

MATCH LINE STA. 318+20



ILLINOIS ROUTE 31

MATCH LINE STA. 318+20



- (R12) 82' - SS REM 18
- (R13) 118' - SS REM 18
- (R14) 110' - SS REM 18

- NOTE
1. AGG SHOULDER REMOVAL TO BE PAID FOR AS EARTH EXCAVATION.
  2. SEE ALIGNMENT, TIES AND BENCHMARKS SHEET NO. 18 FOR DETAILED ROW AND EASEMENT LOCATION.

FILE NAME  
...\\07-Removals\2278NG\_REM\_05.dgn

USER NAME = kwh  
DESIGNED - DTE  
DRAWN - DTE  
PLOT SCALE = 20.0000' / in.  
PLOT DATE = 12/17/2013

REVISIONS  
REVISOR  
DATE

STATE OF ILLINOIS  
DEPARTMENT OF TRANSPORTATION

REMOVAL PLAN

SCALE: 1" = 20' SHEET NO. 5 OF 5 SHEETS STA. 313+00 TO STA. 320+82.66

F.A.U. RTE.	SECTION	COUNTY	TOTAL SHEETS	SHEET NO.
3887	18W&RS-5 (12)	McHENRY	151	37
CONTRACT NO. 60V72			FED. ROAD DIST. NO. 1 ILLINOIS FED. AID PROJECT	