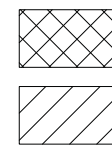


**LEGEND**



TEMPORARY PAVEMENT

CONSTRUCTION WORK ZONE



DIRECTION OF TRAFFIC FLOW



DRUM OR TYPE II BARRICADE WITH BI-DIRECTIONAL STEADY-BURN LIGHT IN 2-LANE SECTIONS  
MONO-DIRECTIONAL STEADY BURN LIGHT IN MULTI-LANE SECTIONS (TYP.)



TYPE II DIRECTION INDICATOR BARRICADE WITH MONO-DIRECTIONAL STEADY BURN LIGHT



DOUBLE VERTICAL PANEL WITH BI-DIRECTIONAL STEADY-BURN LIGHT



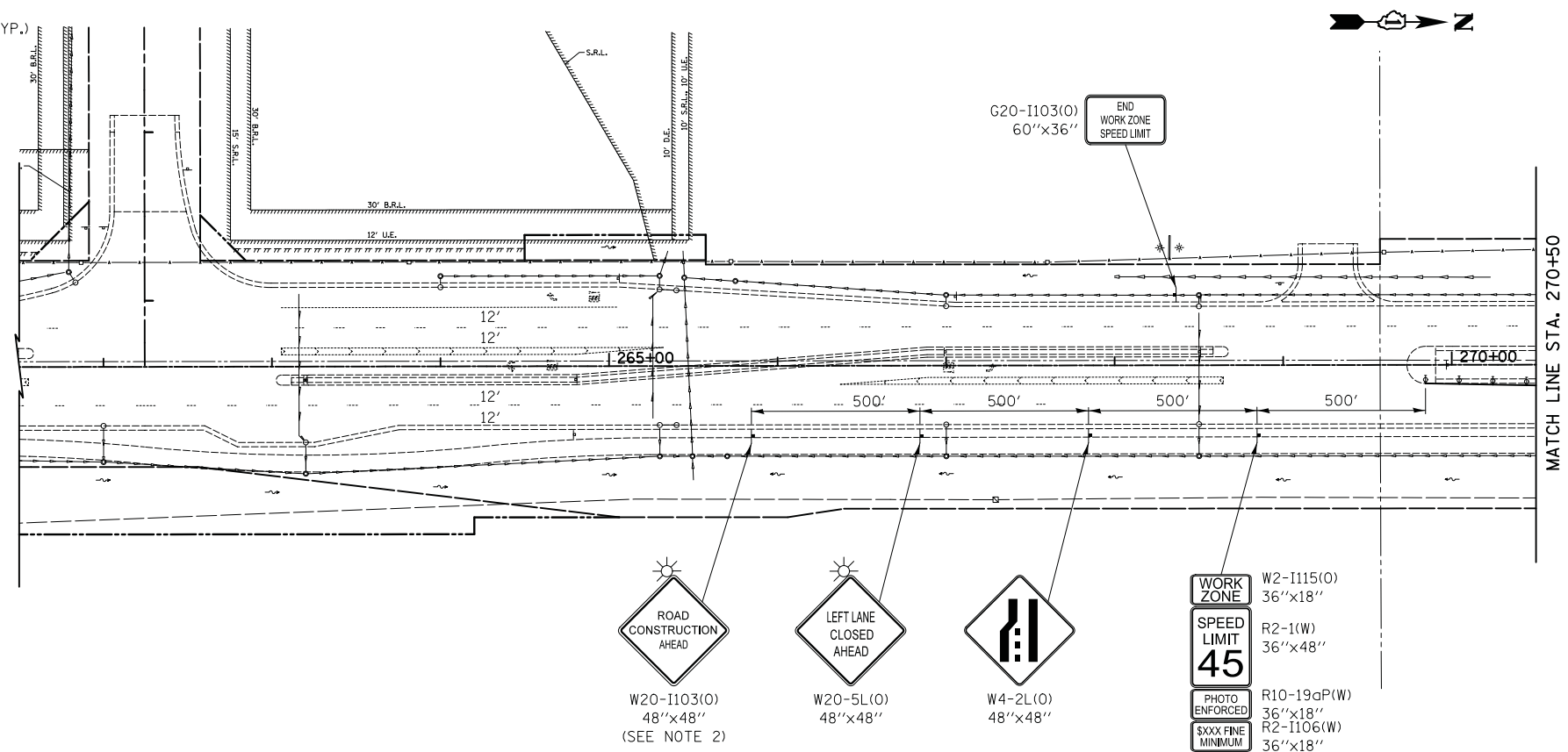
TYPE III BARRICADE WITH FLASHING LIGHTS



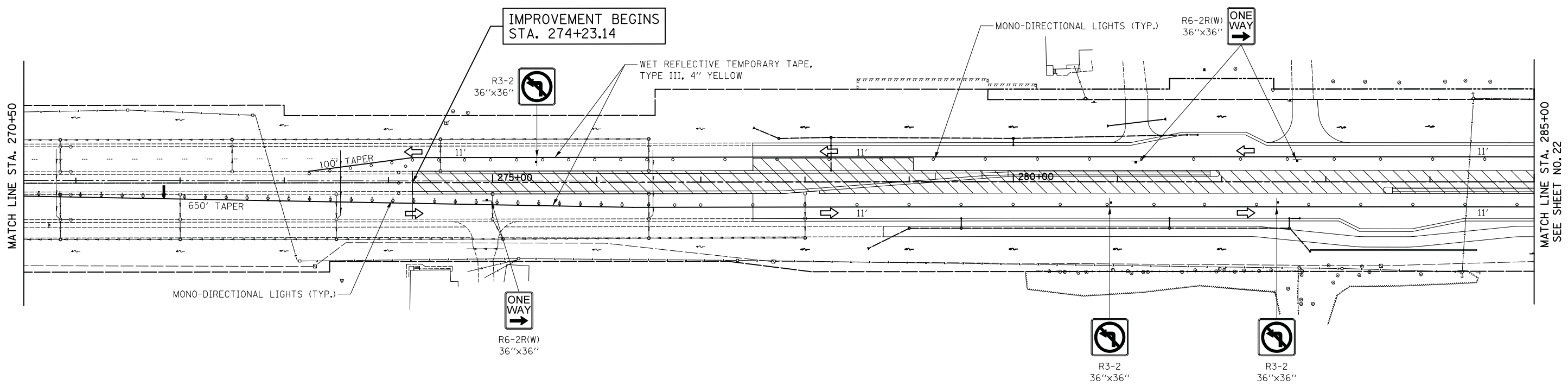
FLASHING ARROW BOARD

**NOTES:**

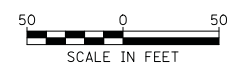
1. DRUMS OR TYPE II BARRICADES SHALL BE SPACED AT 50' C-C IN TANGENTS, 20' C-C IN TAPERS, AND 10' C-C IN RADII.
2. SIGN W20-I103 MAY BE OMITTED IF IT IS WITHIN AN EXISTING WORK ZONE.



ILLINOIS ROUTE 31



ILLINOIS ROUTE 31



FILE NAME = ...\\06-MOT\2278NG_MOT_S3_01.dgn	USER NAME = kwh	DESIGNED - KWH	REVISED -	<b>STATE OF ILLINOIS DEPARTMENT OF TRANSPORTATION</b>	<b>MAINTENANCE OF TRAFFIC - STAGE 3A &amp; B</b>			F.A.P. RTE. 3887	SECTION 18W&RS-5 (12)	COUNTY MCHENRY	TOTAL SHEETS 151	SHEET NO. 30
PLOT SCALE = 50.0000' / in.	CHECKED - GAB	REVISIED -	REVISIED -					SCALE: 1" = 50'	SHEET NO. 11 OF 13 SHEETS	STA. 274+23.14 TO STA. 285+00	CONTRACT NO. 60V72	
PLOT DATE = 12/19/2013	DATE - 12/17/2013	REVISIED -	REVISIED -		FED. ROAD DIST. NO. 1 ILLINOIS FED. AID PROJECT							