

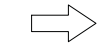
LEGEND



TEMPORARY PAVEMENT



CONSTRUCTION WORK ZONE



DIRECTION OF TRAFFIC FLOW



DRUM OR TYPE II BARRICADE WITH BI-DIRECTIONAL STEADY-BURN LIGHT IN 2-LANE SECTIONS
MONO-DIRECTIONAL STEADY BURN LIGHT IN MULTI-LANE SECTIONS (TYP.)



TYPE II DIRECTION INDICATOR BARRICADE WITH MONO-DIRECTIONAL STEADY BURN LIGHT



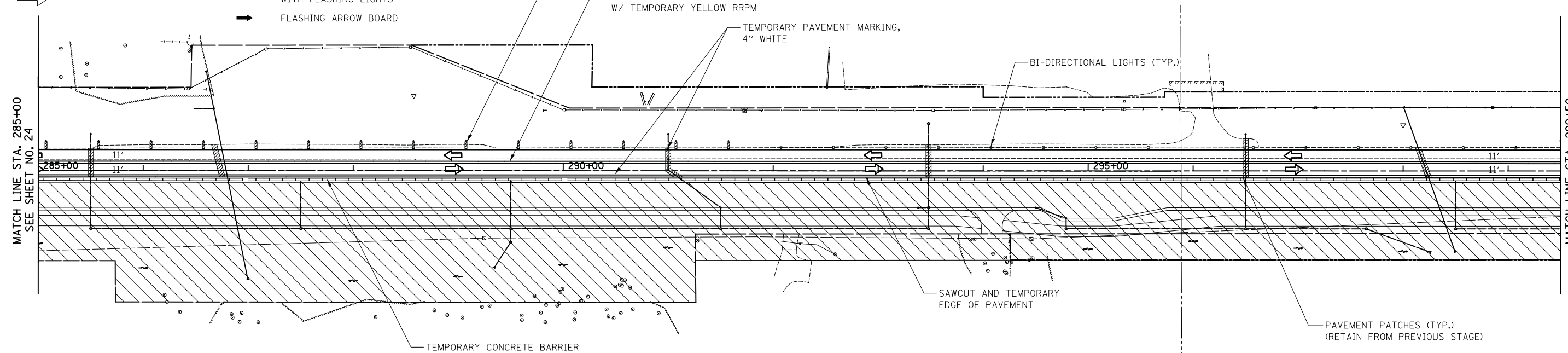
DOUBLE VERTICAL PANEL WITH BI-DIRECTIONAL STEADY-BURN LIGHT



TYPE III BARRICADE WITH FLASHING LIGHTS



FLASHING ARROW BOARD



MATCH LINE STA. 285+00
SEE SHEET NO. 24

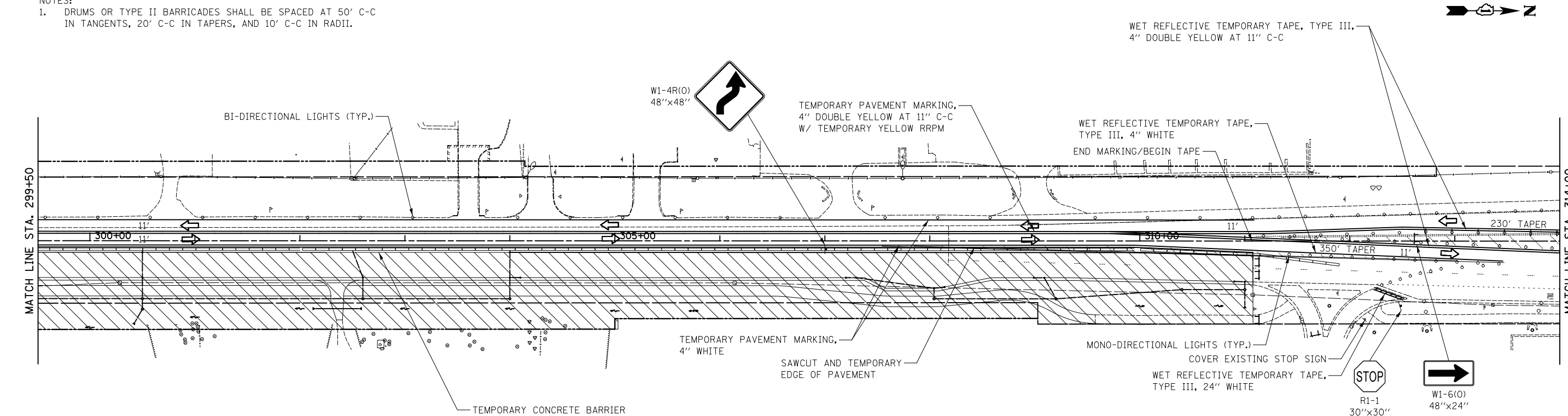
MATCH LINE STA. 299+50

ILLINOIS ROUTE 31



NOTES:

- DRUMS OR TYPE II BARRICADES SHALL BE SPACED AT 50' C-C IN TANGENTS, 20' C-C IN TAPERS, AND 10' C-C IN RADII.



MATCH LINE STA. 299+50

MATCH LINE STA. 314+00
SEE SHEET NO. 26

ILLINOIS ROUTE 31



FILE NAME = ...\\06-MOT\2278NG_MOT_S1_02.dgn	USER NAME = kwh	DESIGNED - KWH	REVISED -	STATE OF ILLINOIS DEPARTMENT OF TRANSPORTATION	MAINTENANCE OF TRAFFIC - STAGE 1A & B			F.A.P. RTE.	SECTION	COUNTY	TOTAL SHEETS	SHEET NO.	
		DRAWN - PML	REVISED -					3887	18W&RS-5 (12)	MCHENRY	151	25	
		CHECKED - GAB	REVISED -		SCALE: 1" = 50'			SHEET NO. 6 OF 13 SHEETS		STA. 285+00 TO STA. 314+00		CONTRACT NO. 60V72	
		DATE - 12/17/2013	REVISED -		FED. ROAD DIST. NO. 1 ILLINOIS FED. AID PROJECT								