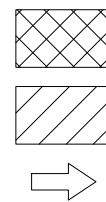


LEGEND

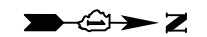


TEMPORARY PAVEMENT

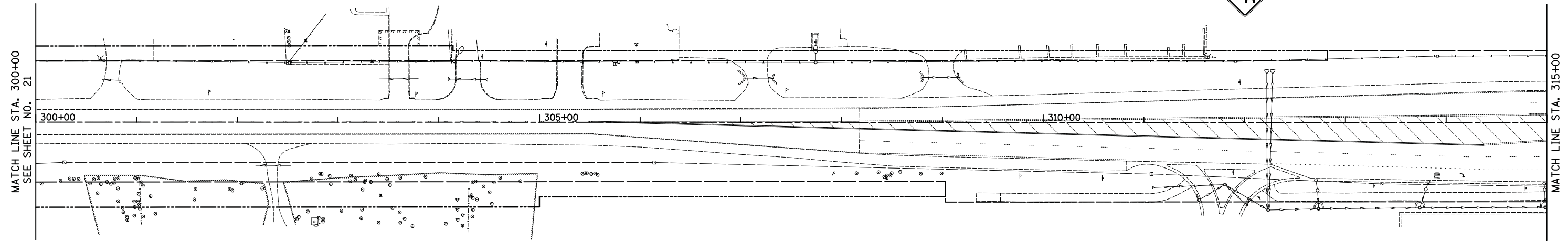
CONSTRUCTION WORK ZONE

DIRECTION OF TRAFFIC FLOW

- DRUM OR TYPE II BARRICADE WITH BI-DIRECTIONAL STEADY-BURN LIGHT IN 2-LANE SECTIONS
MONO-DIRECTIONAL STEADY BURN LIGHT IN MULTI-LANE SECTIONS (TYP.)
- ◀ TYPE II DIRECTION INDICATOR BARRICADE WITH MONO-DIRECTIONAL STEADY BURN LIGHT
- ▬ DOUBLE VERTICAL PANEL WITH BI-DIRECTIONAL STEADY-BURN LIGHT
- ⊥ TYPE III BARRICADE WITH FLASHING LIGHTS
- FLASHING ARROW BOARD



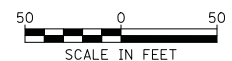
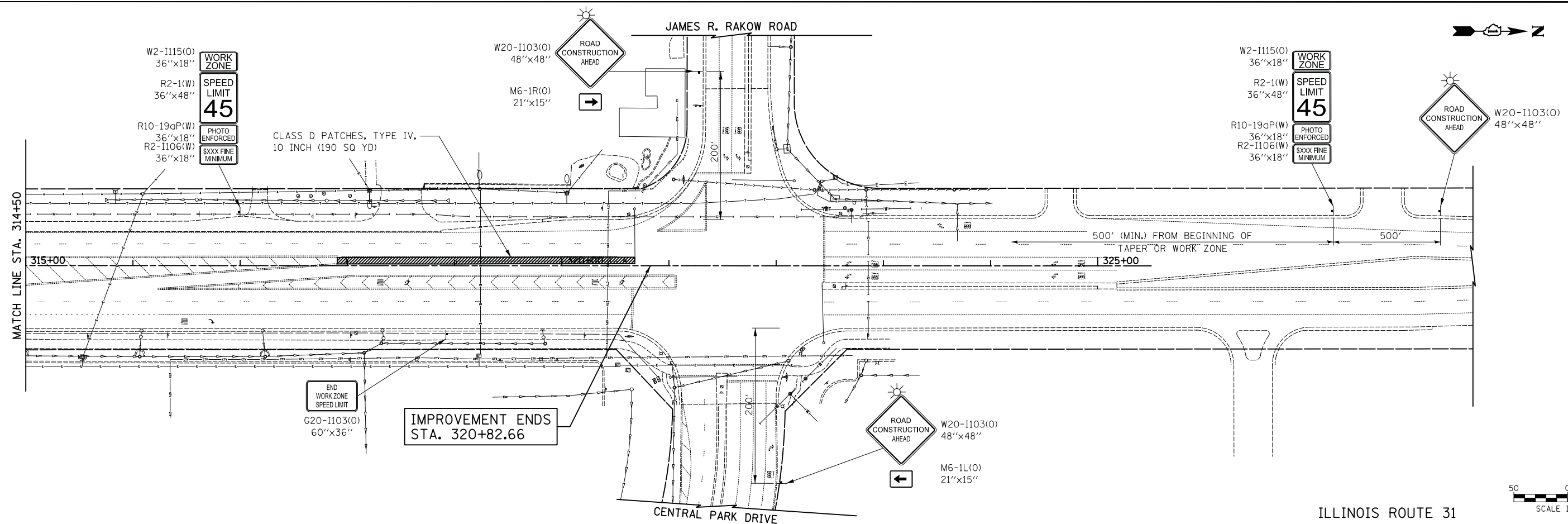
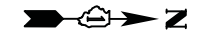
W20-7(O)
48"x48"
(SEE NOTE 2)



NOTES:

1. INSTALL STORM SEWER AND PIPE CULVERTS USING DAILY LANE CLOSURES IN ACCORDANCE WITH 701006 OR 701201 BETWEEN 9 AM AND 3 PM.
2. SIGN W20-7 TO BE REMOVED WHEN FLAGGER IS NOT PRESENT. SEE STANDARD PLANS FOR SIGN PLACEMENT, MINIMUM OF 500 FEET FROM FLAGGER.

ILLINOIS ROUTE 31



ILLINOIS ROUTE 31

FILE NAME =
...\\06-MOT\2278NG_MOT_PRESL.02.dgn

USER NAME = kwh
PLOT SCALE = 50.0000' / in.
PLOT DATE = 9/6/2013

DESIGNED - KWH
DRAWN - PML
CHECKED - GAB
DATE - 06/24/2013

REVISED -
REVISED -
REVISED -
REVISED -

**STATE OF ILLINOIS
DEPARTMENT OF TRANSPORTATION**

MAINTENANCE OF TRAFFIC - PRE-STAGE 1

SCALE: 1" = 50' SHEET NO. 4 OF 13 SHEETS STA. 300+00 TO STA. 320+82.66

F.A.P. RTE.	SECTION	COUNTY	TOTAL SHEETS	SHEET NO.
3887	18W&RS-5 (12)	MCHENRY	151	23
CONTRACT NO. 60V72			FED. ROAD DIST. NO. 1 ILLINOIS FED. AID PROJECT	