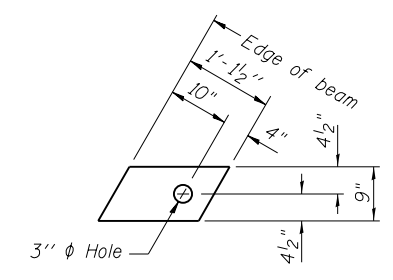


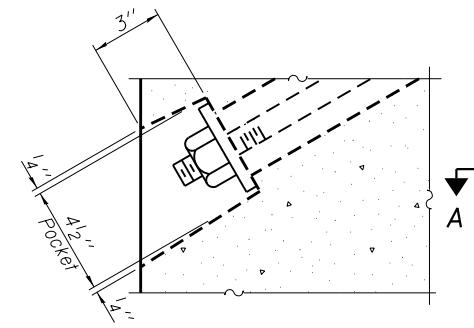
FABRIC BEARING PAD
(Interior)



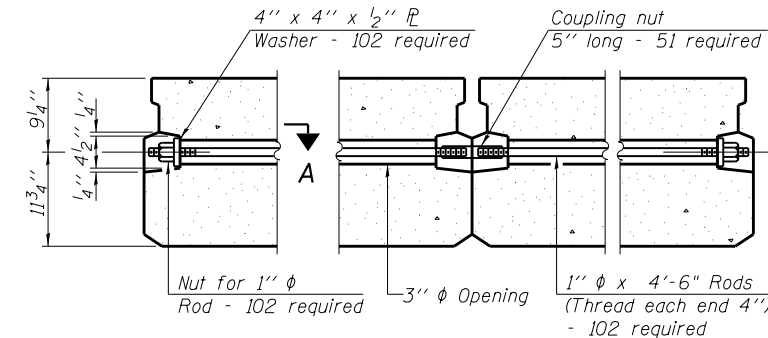
FABRIC BEARING PAD
(Exterior)

FIXED

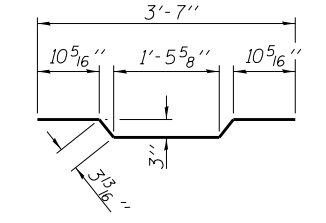
Notes:
All bearing pads shall be 1" thick.
Omit holes when using expansion bearings.
Expansion bearing pad shall be bonded to the steel fill plate.



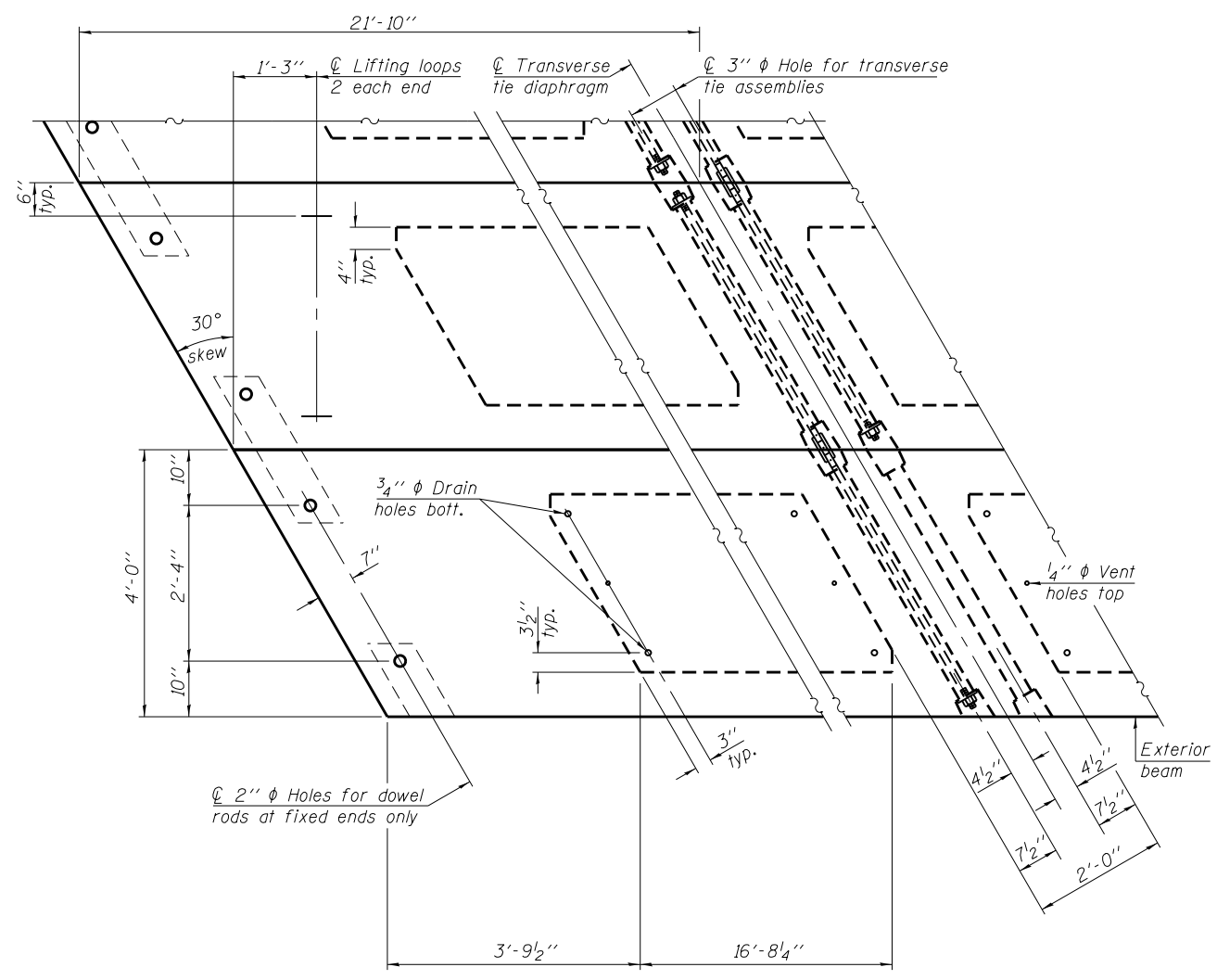
SECTION A-A



TYPICAL TRANSVERSE TIE ASSEMBLY

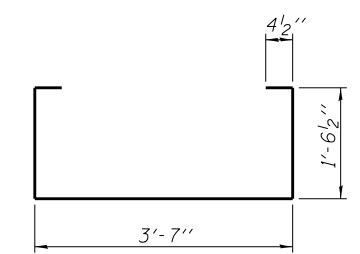


BAR A1(E)

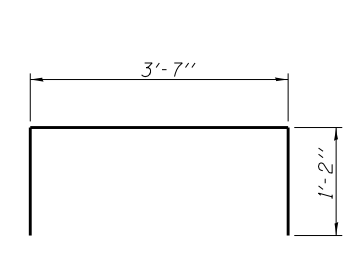


PLAN VIEW

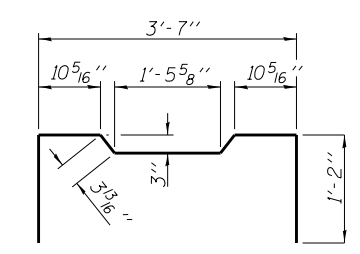
Note: Connect beams in pairs with the transverse tie configuration shown.



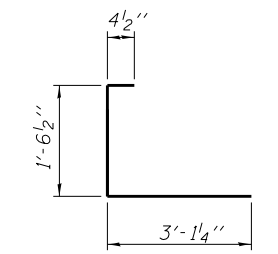
BAR S(E)



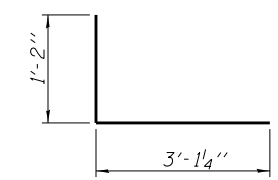
BAR S1(E)



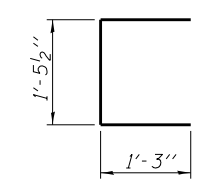
BAR S2(E)



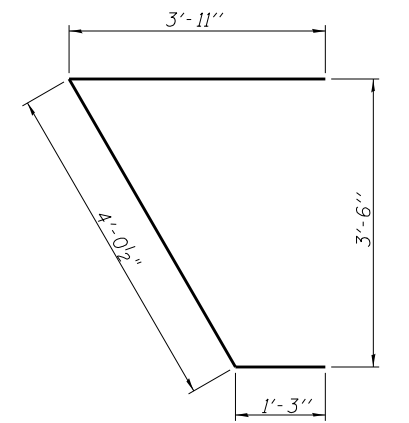
BAR S3(E)



BAR S4(E)



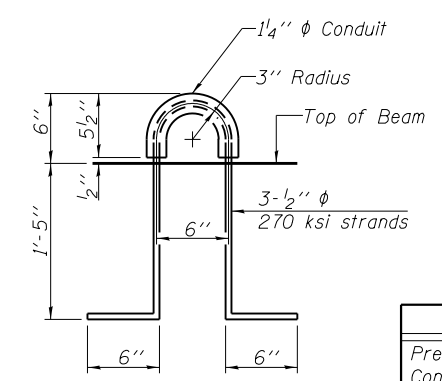
BAR U(E)



BAR U1(E)

NOTES

Prestressing steel shall be uncoated high strength, low relaxation 7-wire strand, Grade 270. The nominal diameter shall be 1/2" and the nominal cross-sectional area shall be 0.153 sq. in. The 1" phi rods in the transverse tie assembly shall be tightened to a snug fit and the threads set. Pockets on exterior faces of bridge shall be filled with grout after transverse tie assembly is in place.
Reinforcement bars shall conform to ASTM A 706, Grade 60.
Two 1/8" fabric adjusting shims of the dimensions of the exterior bearing pad shall be provided for each bearing pad location.
A minimum 2 1/2" phi lifting pin shall be used to engage the lifting loops during handling.
Corrosion Inhibitor, per Article 1020.05(b)(12) and 1021.06 of the Standard Specifications, shall be used in the concrete for precast prestressed concrete deck beams.
Compressive strength of prestressed concrete, f'c, shall be 6000 psi.
Compressive strength of prestressed concrete at release, f'ci, shall be 5000 psi.



LIFTING LOOP DETAIL

TOTAL BILL OF MATERIAL

Item	Unit	Total
Precast Prestressed Concrete Deck Beams, (21' Depth)	Sq. Ft.	9427

M:\L 132 over: Des\James River\12-15-00\1\DRAWINGS\Structural\Final Plans\CADD Sheets\049-0062.18.ppc_deck_details.dgn

PD-2148-RD

7-1-10



USER NAME = JPS
FILE NAME = 049-0062.18.ppc_deck_details.dgn
PLOT DATE = 9/3/2013

DESIGNED - OY
CHECKED - DB
DRAWN - CM
CHECKED - OY

REVISED
REVISED
REVISED
REVISED

**STATE OF ILLINOIS
DEPARTMENT OF TRANSPORTATION**

**21" x 48" PPC DECK BEAM DETAILS
STRUCTURE NO. 049-0062**

SHEET NO. S18 OF S23 SHEETS

F.A.P. RTE.	SECTION	COUNTY	TOTAL SHEETS	SHEET NO.
541	X-6B-R	LAKE	93	59
CONTRACT NO. 60N22				

ILLINOIS FED. AID PROJECT