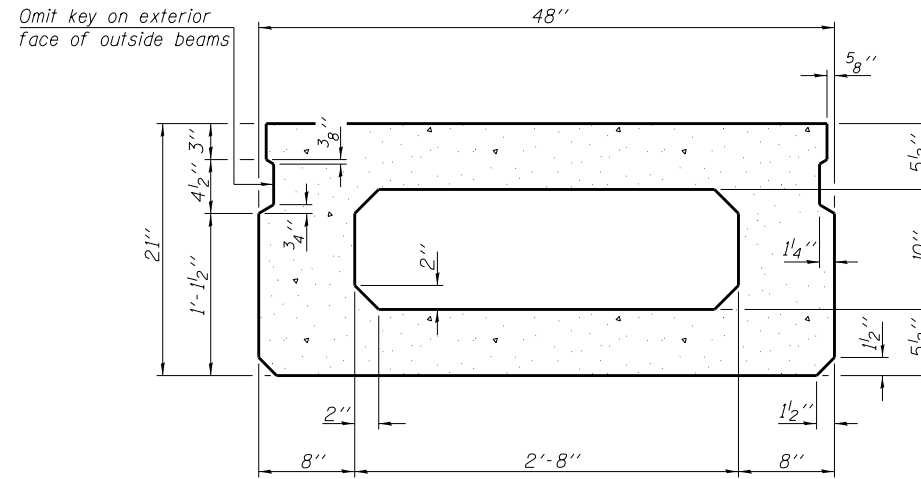
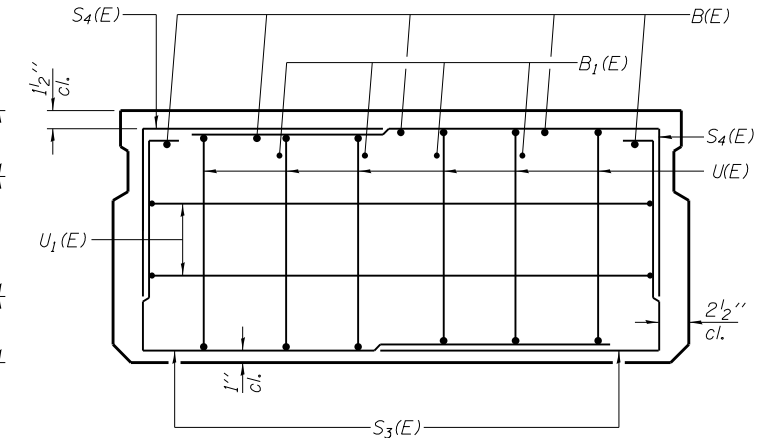


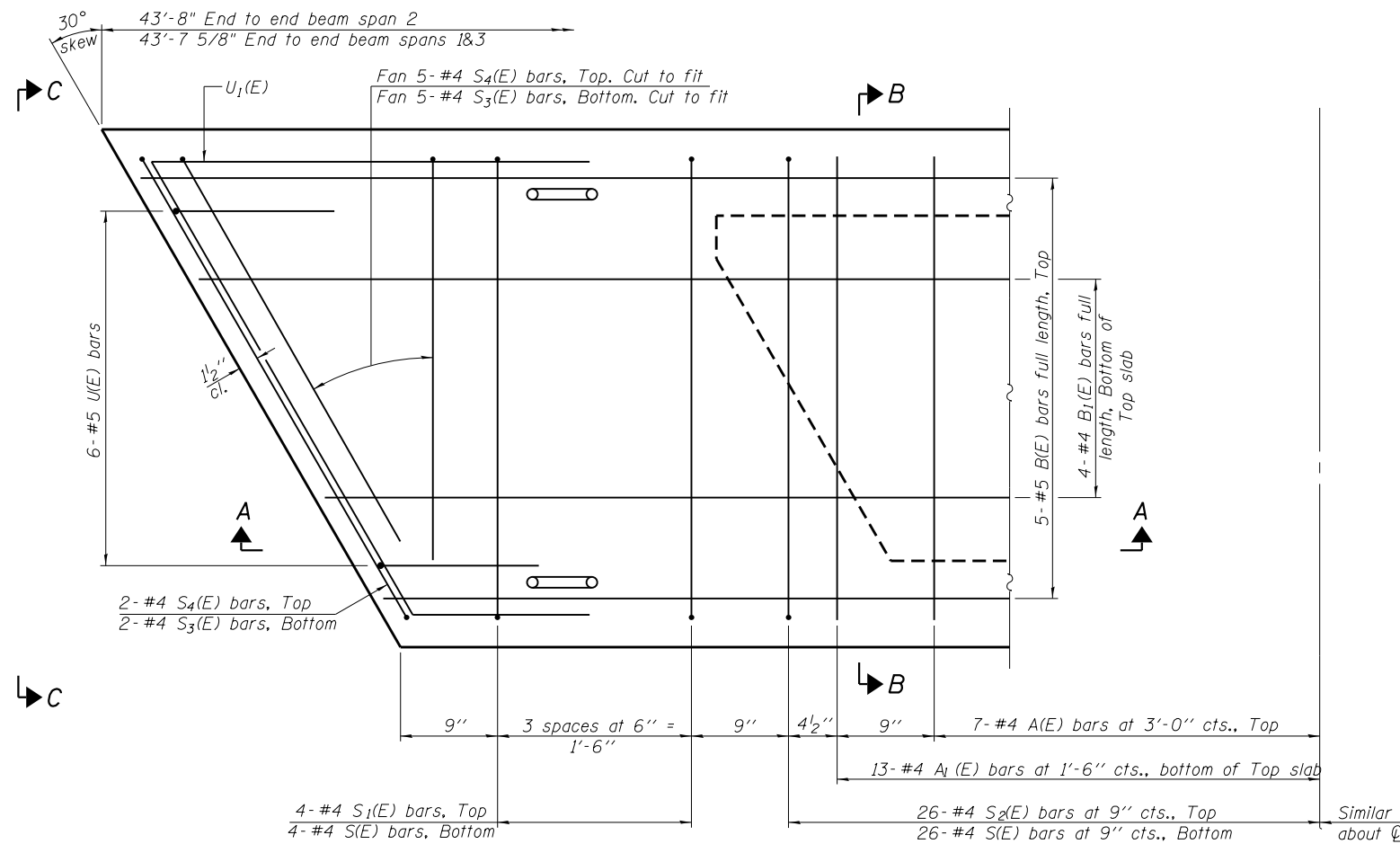
SECTION A-A



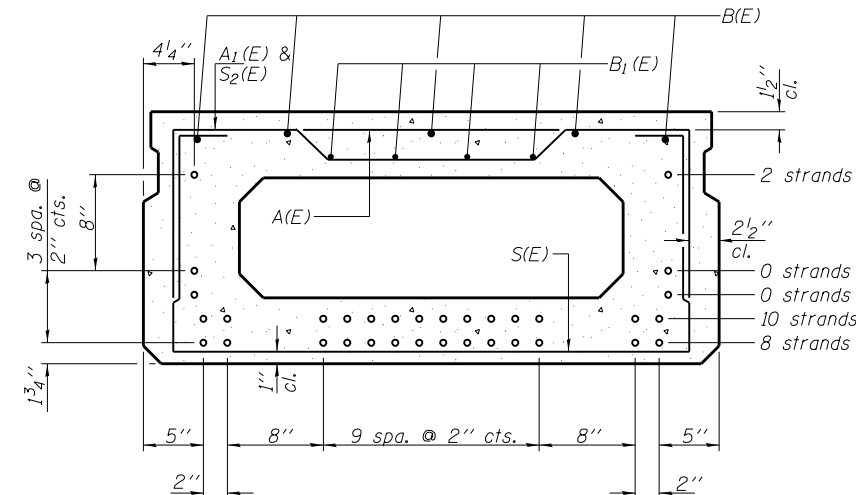
SECTION B-B
(Showing dimensions)



VIEW C-C



PLAN VIEW



SECTION B-B

(Showing reinforcement and permissible strand locations)
Note: Place the number of strands specified in each row symmetrically about the centerline of beam in the permissible strand locations shown.

BAR LIST
ONE BEAM ONLY

(For information only)

Bar	No.	Size	Length	Shape
A(E)	14	#4	3'-7"	—
A1(E)	26	#4	3'-10"	—
B(E)	5	#5	43'-4"	—
B1(E)	4	#4	43'-4"	—
S(E)	60	#4	7'-5"	⌈
S1(E)	8	#4	5'-11"	⌈
S2(E)	52	#4	6'-2"	⌈
S3(E)	14	#4	5'-0"	⌈
S4(E)	14	#4	4'-3"	⌈
U(E)	12	#5	4'-0"	⌈
U1(E)	4	#4	9'-2"	⌈

Note: See sheet S18 of S23 for additional details and Bill of Material.

MINIMUM BAR LAP

#4 bar = 2'-0"
#5 bar = 2'-6"

Note: Spacing of S(E) and S2(E) bars may be adjusted up to 4" in the immediate area of the transverse tie diaphragms to miss the block outs for the transverse ties.

M:\JL 132 over: DepJames River\12-15-00\1\DRAWINGS\Structural\Final Plans\CADD Sheets\049-0062.17_ppc_deck_bm.dgn

PD-2148-R

7-1-10



USER NAME = JPS
FILE NAME = 049-0062.17_ppc_deck_bm.dgn
PLOT DATE = 9/3/2013

DESIGNED - OY
CHECKED - DB
DRAWN - CM
CHECKED - OY

REVISED
REVISED
REVISED
REVISED

STATE OF ILLINOIS
DEPARTMENT OF TRANSPORTATION

21" x 48" PPC DECK BEAM
STRUCTURE NO. 049-0062

SHEET NO. S17 OF S23 SHEETS

F.A.P. RTE.	SECTION	COUNTY	TOTAL SHEETS	SHEET NO.
541	X-6B-R	LAKE	93	58
ILLINOIS FED. AID PROJECT			CONTRACT NO. 60N22	