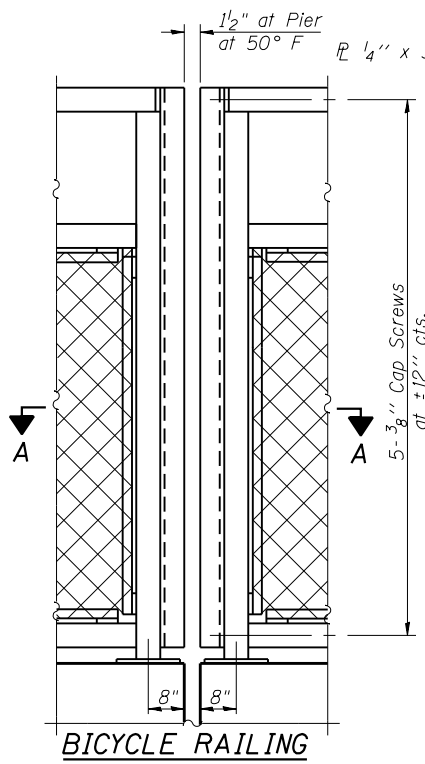
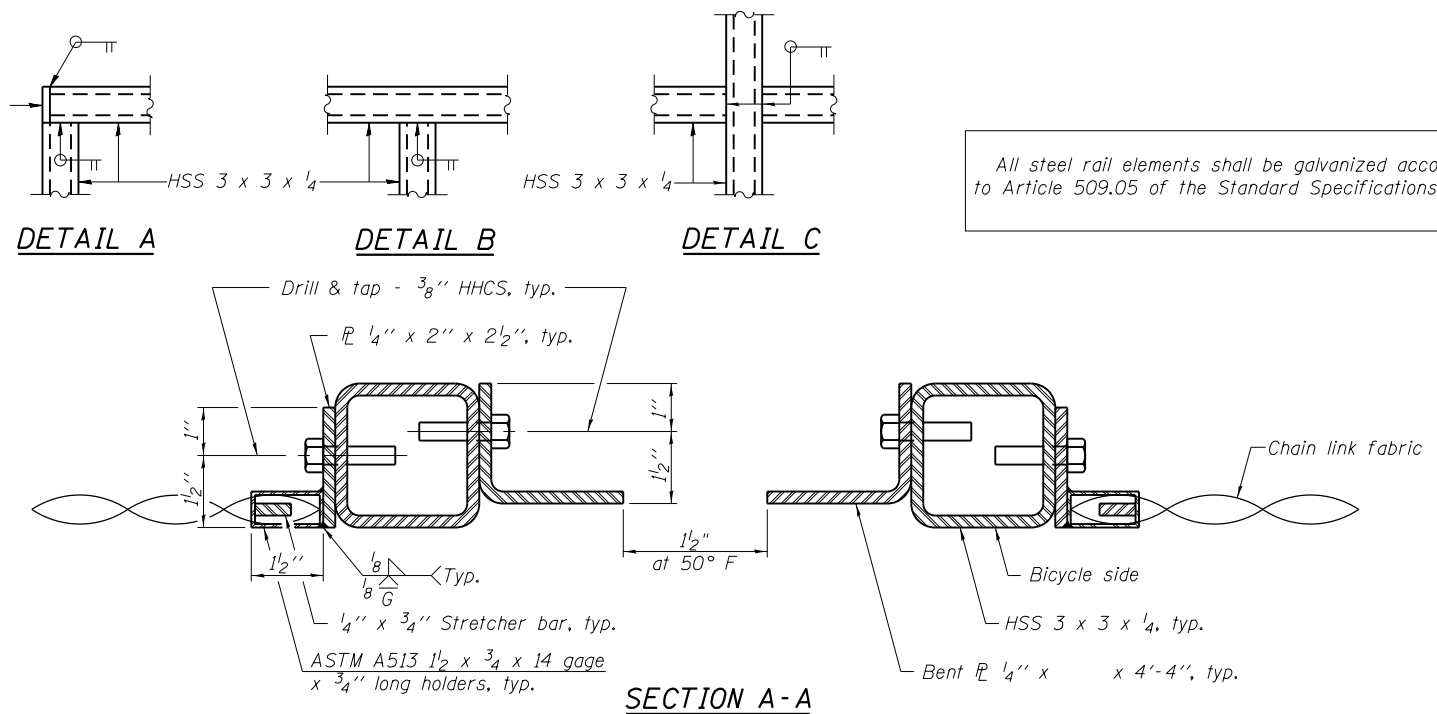


BICYCLE RAILING

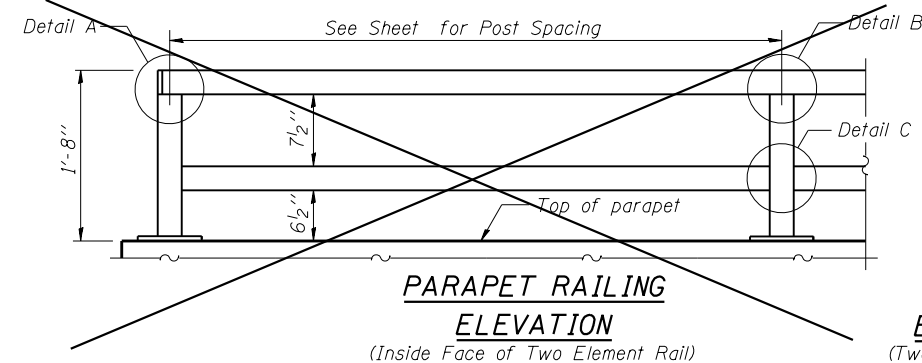


BICYCLE RAILING

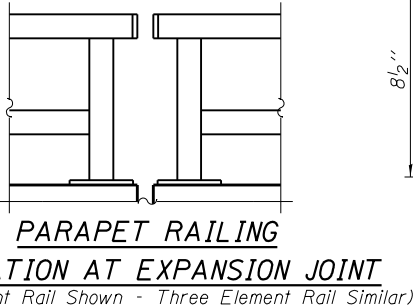


All steel rail elements shall be galvanized according to Article 509.05 of the Standard Specifications.

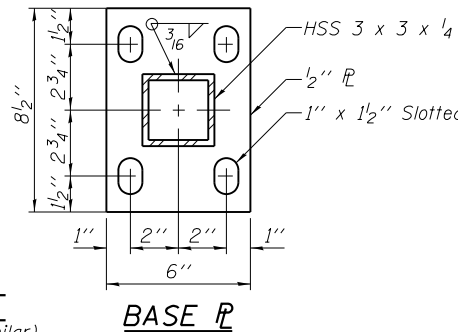
SECTION A-A



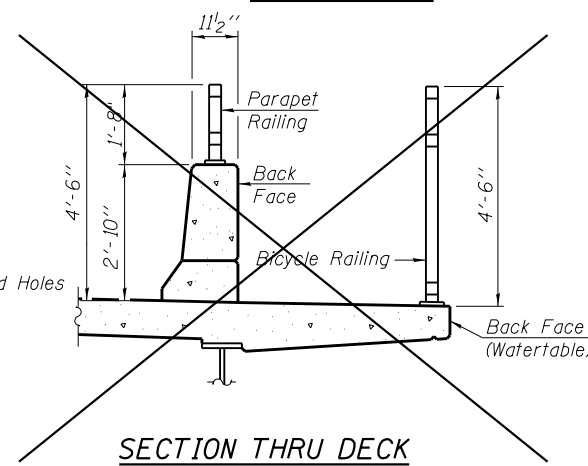
PARAPET RAILING ELEVATION
(Inside Face of Two Element Rail)



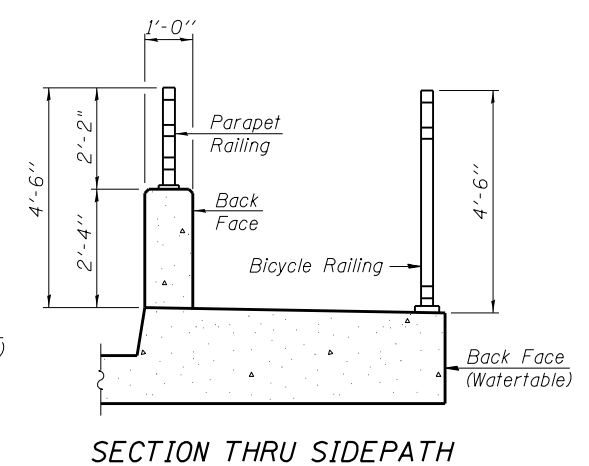
PARAPET RAILING ELEVATION AT EXPANSION JOINT
(Two Element Rail Shown - Three Element Rail Similar)



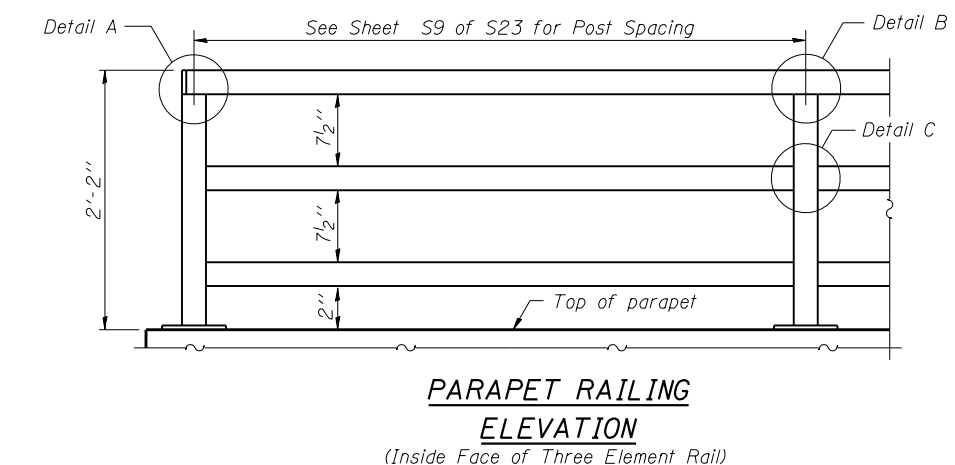
BASE R



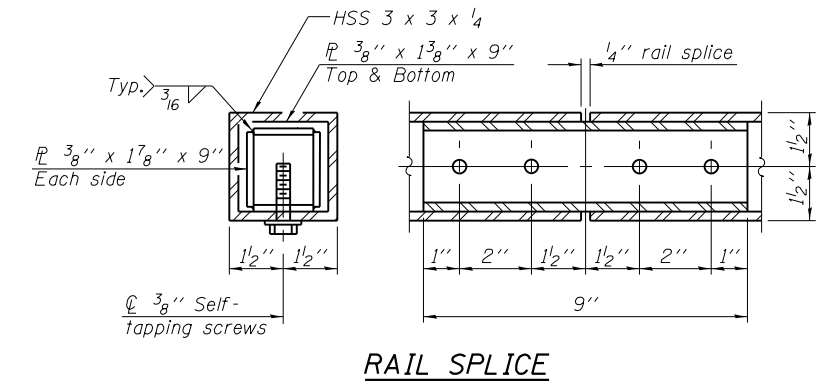
SECTION THRU DECK



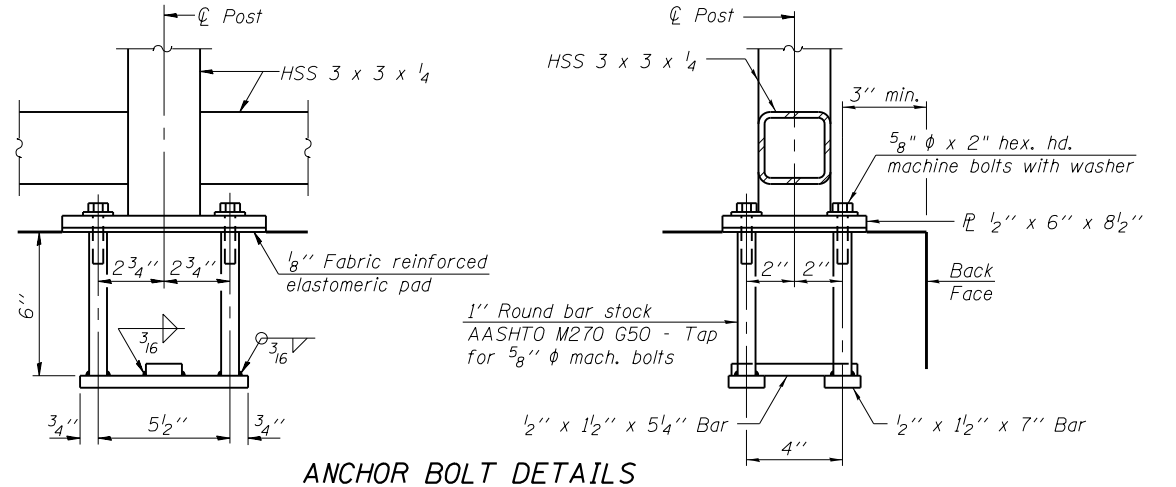
SECTION THRU SIDE PATH



PARAPET RAILING ELEVATION
(Inside Face of Three Element Rail)



RAIL SPLICE



ANCHOR BOLT DETAILS

In lieu of the cast-in-place anchor device shown, the Contractor has the option of drilling and setting 5/8" φ anchor rods according to Article 509.06 of the Standard Specifications. Embedment shall be according to the manufacturer's specifications.

BILL OF MATERIAL

Item	Unit	Quantity
Bicycle Railing	Foot	381
Parapet Railing	Foot	381

R-29

1-27-12 (10'-0" Maximum Post Spacing)



USER NAME = JPS
FILE NAME = 049-0062.15-railing.dgn
PLOT DATE = 9/3/2013

DESIGNED	REVISOR
OY	REVISOR
DB	REVISOR
CM	REVISOR
OY	REVISOR

STATE OF ILLINOIS
DEPARTMENT OF TRANSPORTATION

BICYCLE RAILING AND PARAPET RAILING DETAILS
STRUCTURE NO. 049-0062

SHEET NO. S15 OF S23 SHEETS

F.A.P. RTE.	SECTION	COUNTY	TOTAL SHEETS	SHEET NO.
541	X-6B-R	LAKE	93	56
				CONTRACT NO. 60N22

ILLINOIS FED. AID PROJECT