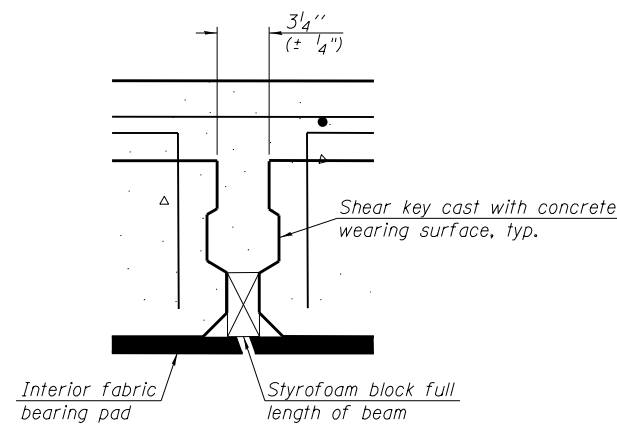


INTERIOR

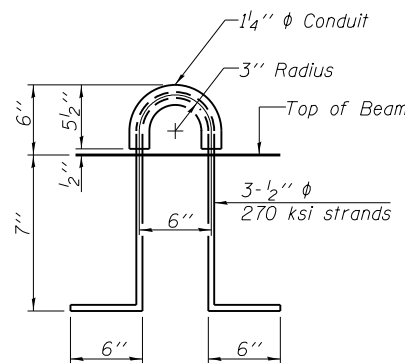
EXTERIOR

FABRIC BEARING PAD

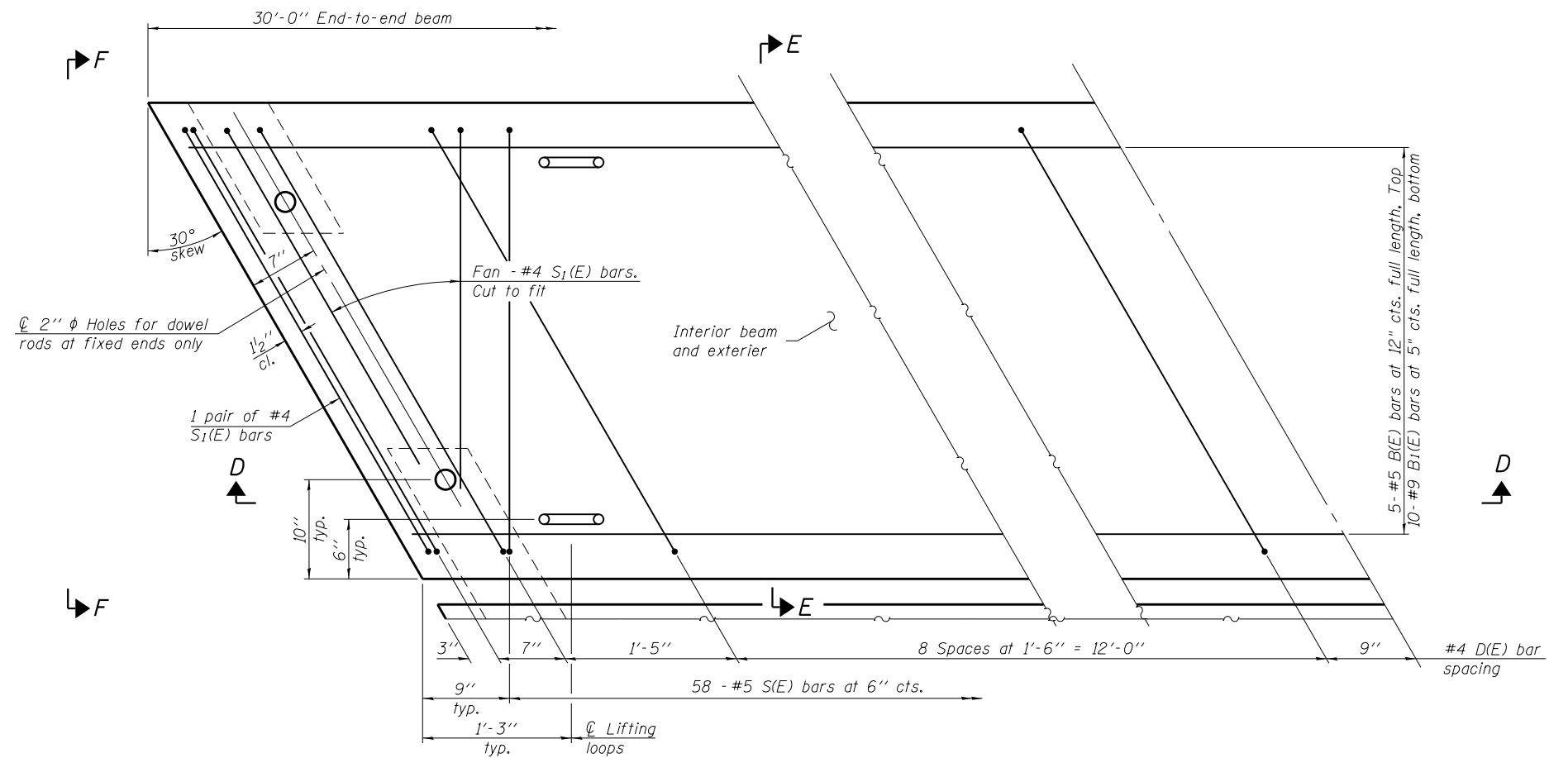
Notes:
 All bearing pads shall be 1/2" thick.
 Omit holes for fabric bearing pads at approach slab footing end of beams.
 Expansion bearing pad shall be bonded to the approach slab footing.



SECTION THRU SHEAR KEY JOINT



LIFTING LOOP DETAIL



PLAN VIEW
 (showing precast bridge approach beams)

M:\L 132 over- Dep\James River\12-15-00\1\DRAWINGS\Structural\Final Plans\CADD Sheets\049-0062.13.appr.slab.dgn



USER NAME = JPS
 FILE NAME = 049-0062.13.appr.slab.dgn
 PLOT DATE = 9/3/2013

DESIGNED - OY
 CHECKED - DB
 DRAWN - CM
 CHECKED - OY

REVISED
 REVISED
 REVISED
 REVISED

STATE OF ILLINOIS
 DEPARTMENT OF TRANSPORTATION

PRECAST BRIDGE APPROACH SLAB
 STRUCTURE NO. 049-0062

SHEET NO. S13 OF S23 SHEETS

F.A.P. RTE.	SECTION	COUNTY	TOTAL SHEETS	SHEET NO.
541	X-6B-R	LAKE	93	54
CONTRACT NO. 60N22				

ILLINOIS FED. AID PROJECT