

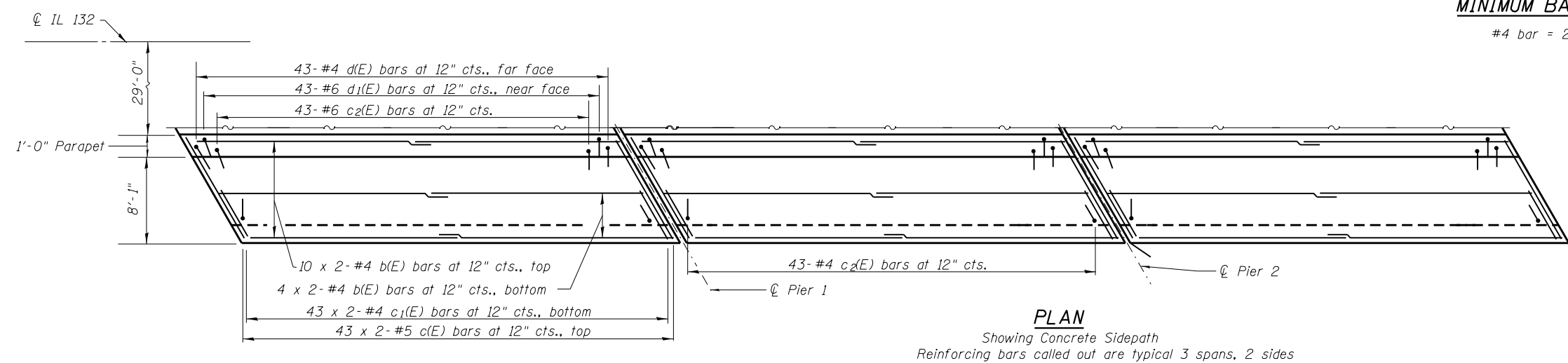
Notes:
 See sheets S9 and S10 of S23 for Superstructure Details and Bill of Material.
 See sheet S8 of S23 for Sections A-A, B-B and C-C.
 Bars indicated thus 20 x 2-#4 etc. indicates 20 lines of bars with 2 lengths per line.
 Spacing of a(E), a1(E), c(E) and c1(E) bars shall be measured along the ϕ of structure.

PLAN

Showing Concrete Wearing Surface

MINIMUM BAR LAP

#4 bar = 2'-7"



PLAN

Showing Concrete Sidepath
 Reinforcing bars called out are typical 3 spans, 2 sides



DESIGNED - OY	REVISED
CHECKED - DB	REVISED
DRAWN - CM	REVISED
CHECKED - OY	REVISED

STATE OF ILLINOIS
 DEPARTMENT OF TRANSPORTATION

SUPERSTRUCTURE PLAN
 STRUCTURE NO. 049-0062

SHEET NO. 57 OF S23 SHEETS

F.A.P. RTE.	SECTION	COUNTY	TOTAL SHEETS	SHEET NO.
541	X-6B-R	LAKE	93	48
CONTRACT NO. 60N22				

ILLINOIS FED. AID PROJECT