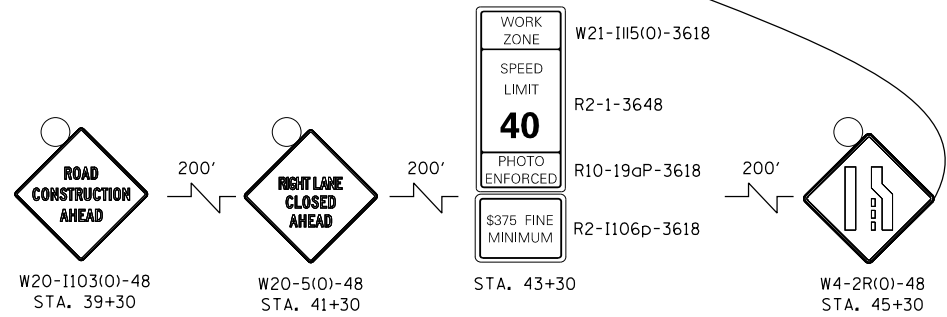
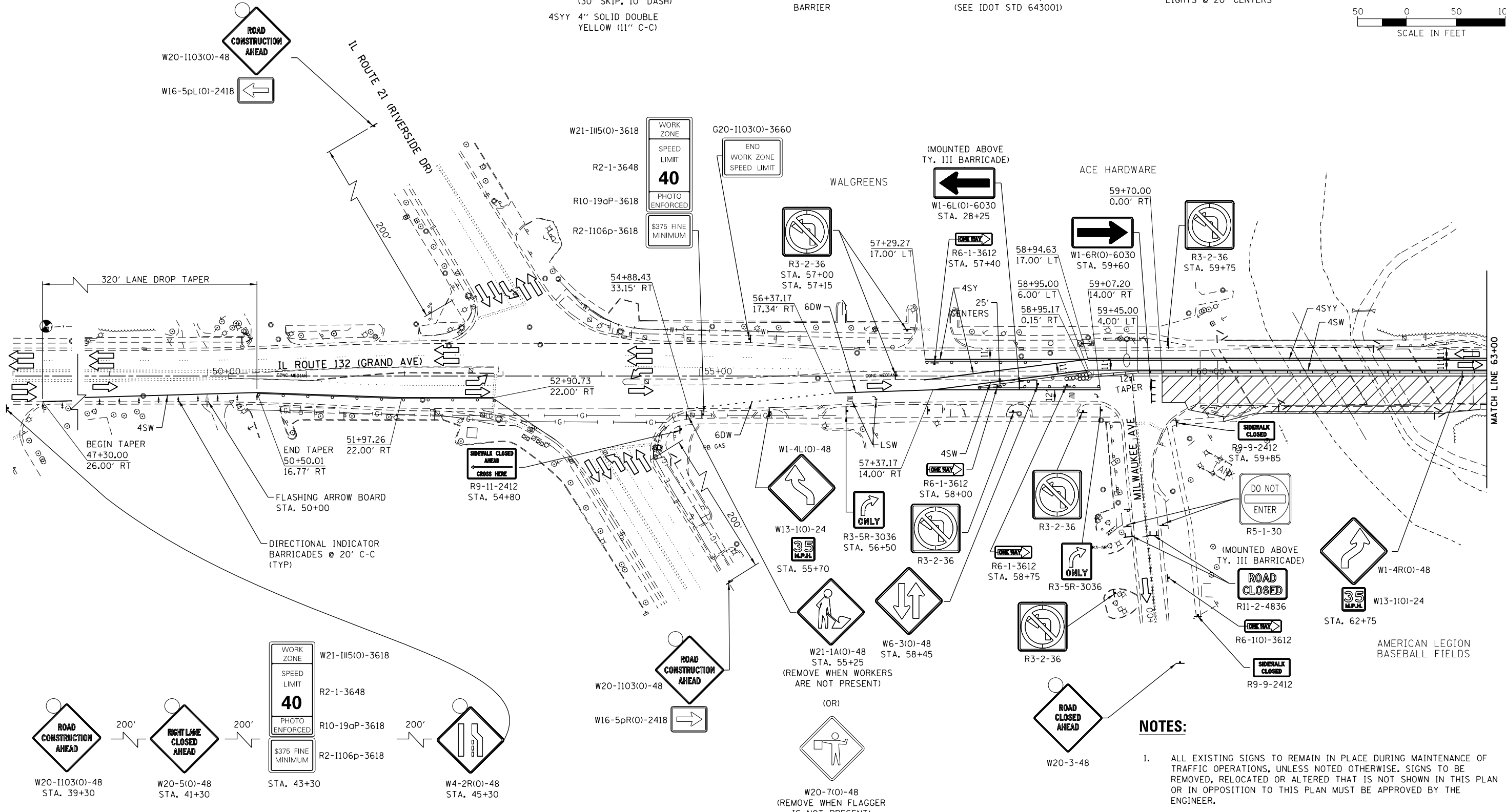
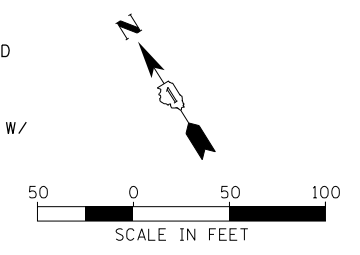


**PAVEMENT MARKING LEGEND**

(E)	EXISTING PAVEMENT MARKING	4SW	4" SOLID WHITE
(T)	TEMPORARY PAVEMENT MARKING FROM PREVIOUS STAGE TO REMAIN	4SY	4" SOLID YELLOW
LSW	LETTERS AND SYMBOLS, WHITE	6DW	6" DOTTED WHITE (2' SKIP, 6' DASH)
24SW	24" SOLID WHITE STOP BAR	4KY	4" SKIP-DASH YELLOW (30' SKIP, 10' DASH)
		4SYY	4" SOLID DOUBLE YELLOW (11" C-C)

**LEGEND**

	PROPOSED PAVEMENT CONSTRUCTION		BARRICADE, TYPE III		DRUMS @ 25' CENTERS (UNLESS NOTED OTHERWISE) WITH STEADY BURNING WARNING LIGHTS
	DIRECTION OF TRAFFIC		FLASHING ARROW BOARD		DIRECTIONAL INDICATOR BARRICADES W/ STEADY BURNING MONO-DIRECTIONAL LIGHTS @ 20' CENTERS
	TEMPORARY CONCRETE BARRIER		IMPACT ATTENUATORS (NON-REDIRECTIVE), TEST LEVEL 2 (SEE IDOT STD 643001)		



- NOTES:**
- ALL EXISTING SIGNS TO REMAIN IN PLACE DURING MAINTENANCE OF TRAFFIC OPERATIONS, UNLESS NOTED OTHERWISE. SIGNS TO BE REMOVED, RELOCATED OR ALTERED THAT IS NOT SHOWN IN THIS PLAN OR IN OPPOSITION TO THIS PLAN MUST BE APPROVED BY THE ENGINEER.
  - SEE DETOUR PLAN FOR IL 132 WB TRAFFIC ACCESS TO MILWAUKEE AVE.

M:\IL\_132\_cover\_Dept\Planes\_River\12-154-001\DRAWINGS\CADD\_Sheets\111132-ent-staging\1.dgn



USER NAME = JPS	DESIGNED - HTL	REVISED -
PLOT SCALE =	DRAWN - HTL	REVISED -
PLOT DATE = 9/25/2013	CHECKED - DPA	REVISED -
	DATE - 09/25/13	REVISED -

**STATE OF ILLINOIS  
DEPARTMENT OF TRANSPORTATION**

**IL 132 (GRAND AVE.) OVER DES PLAINES RIVER  
MAINTENANCE OF TRAFFIC - STAGE 1**

SCALE: 1"=50' SHEET NO. 1 OF 4 SHEETS STA. 49+00 TO STA. 63+00

F.A.P. RTE. 541	SECTION X-6-B-1-1	COUNTY LAKE	TOTAL SHEETS 93	SHEET NO. 22
CONTRACT NO. 60N22				
ILLINOIS FED. AID PROJECT				