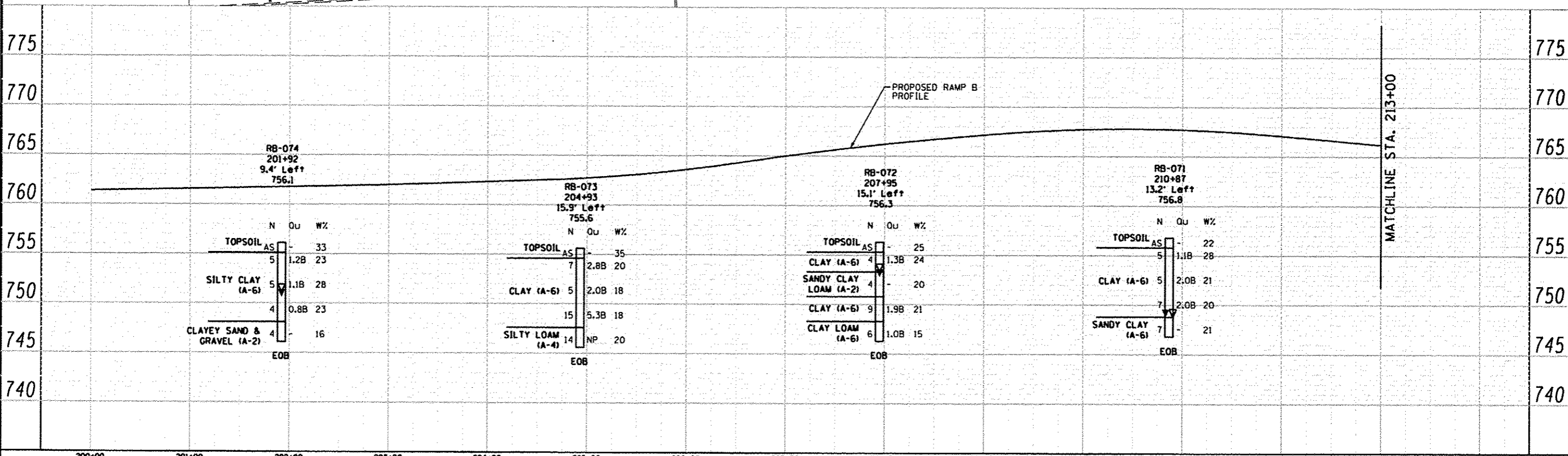
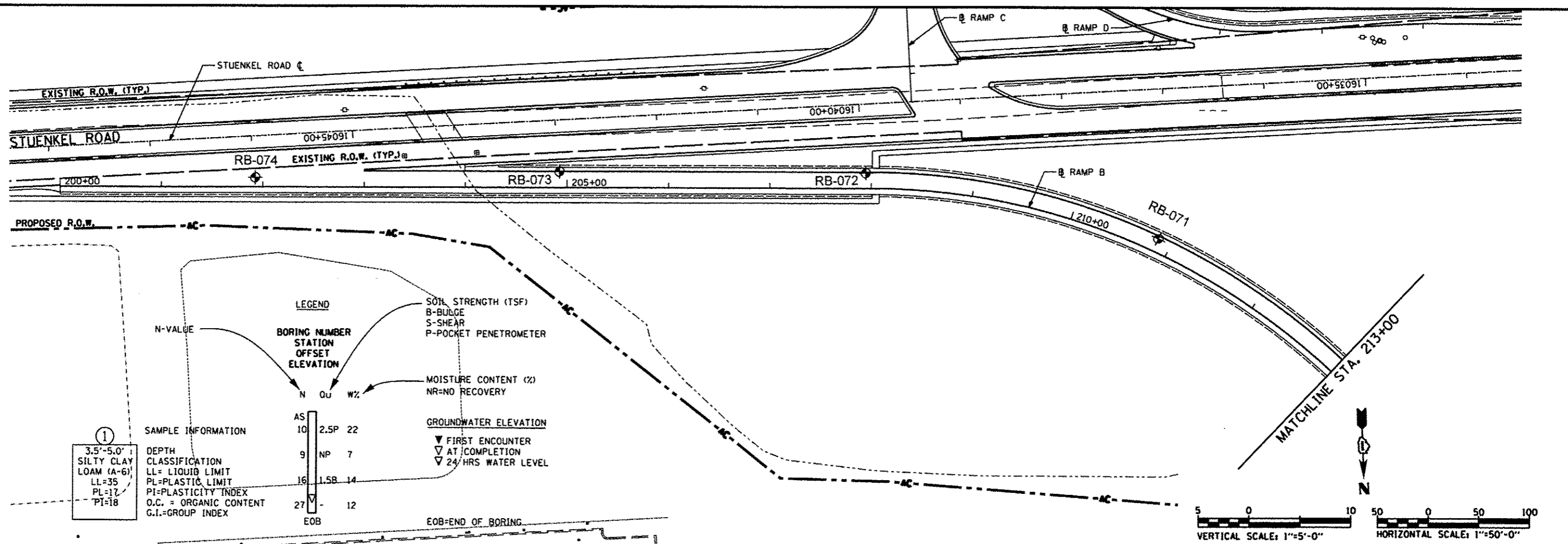


DATE	
BY	
DESIGNED	
DRAWN	
CHECKED	
DATE	
REVISION	
NO.	
PLAN	
NO.	
DATE	
BY	
DESIGNED	
DRAWN	
CHECKED	
DATE	
REVISION	
NO.	

DATE	
BY	
DESIGNED	
DRAWN	
CHECKED	
DATE	
REVISION	
NO.	
PROFILE	
NO.	
DATE	
BY	
DESIGNED	
DRAWN	
CHECKED	
DATE	
REVISION	
NO.	



200+00	201+00	202+00	203+00	204+00	205+00	206+00	207+00	208+00	209+00	210+00	211+00	212+00	213+00		
USER NAME * DESIGNED - RWC DRAWN - RWC CHECKED - AJP DATE - 8/16/2012				REVISED - REVISED - REVISED - REVISED -				STATE OF ILLINOIS DEPARTMENT OF TRANSPORTATION				RAMP B SOIL BORING PLAN AND PROFILE		F.A. RTE. SECTION COUNTY TOTAL SHEETS SHEET NO. 679 OF 626	
SCALE: 1:5V 1:50H SHEET NO. 1 OF 4 SHEETS STA. 200+00 TO STA. 213+00												FED. ROAD DIST. NO. ILLINOIS FED. AID PROJECT CONTRACT NO.			

Geo. Services, Inc.
 Geotechnical, Environmental & Civil Engineering
 805 Amherst Court, Suite 204
 Mokena, Illinois 60555
 (815) 355-2956