

GENERAL NOTES:

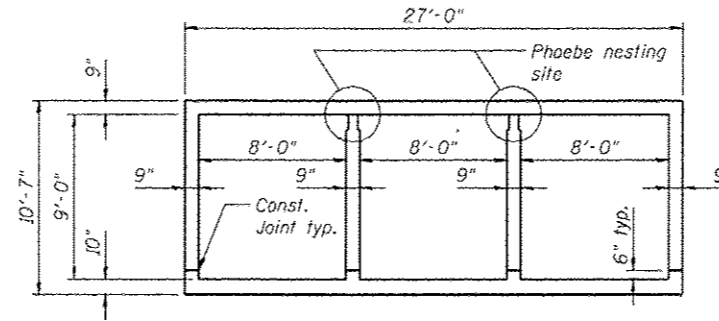
Reinforcement Bars designated (E) shall be epoxy coated.

For backfilling and embankment, see Standard Specifications.

Layout of stone riprap may be varied in the field to suit ground conditions as directed by the engineer.

Excavation required for construction of the culvert as shown in these plans and in accordance with the Standard Specifications shall be included in the cost of Concrete Box Culverts. Excavation for Soldier Pile walls shall be paid for as "Structure Excavation".

The Contractor is responsible for the design and performance of the lagging using no less than a 3 in. nominal rough-sawn thickness and timber with a minimum allowable bending stress of 1000 psi.



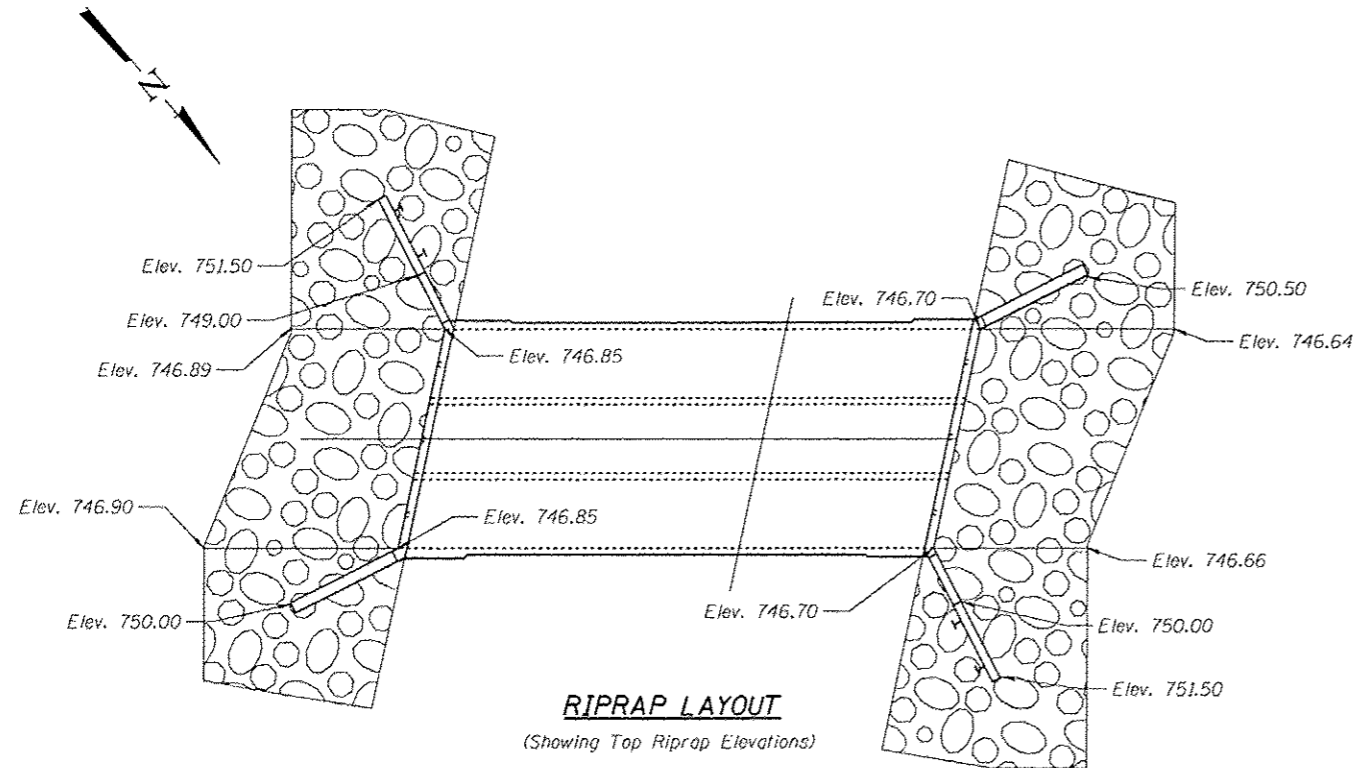
SECTION THRU BARREL

TOTAL BILL OF MATERIAL

Item	Unit	Total
Stone Rip Rap, Class A4	Sq Yd	315
Filter Fabric	Sq Yd	315
Structure Excavation	Cu Yd	24
Concrete Structures	Cu Yd	6.6
Stud Shear Connectors	Each	56
Reinforcement Bars	Pound	13,470
Reinforcement Bars, Epoxy Coated	Pound	1,240
Name Plates	Each	1
Concrete Box Culverts	Cu Yd	188.9
Geocomposite Wall Drain	Sq Yd	5
Driving Soldier Piles	Foot	105
Permanent Steel Sheet Piling	Sq Ft	621
Untreated Timber Lagging	Sq Ft	144
Furnishing Soldier Piles (HP Section)	Foot	105

INDEX OF SHEETS

- SD-1 General Plan and Elevation
- SD-2 General Notes, Index of Sheets & Bill of Material
- SD-3 Culvert Plan and Details 1
- SD-4 Culvert Plan and Details 2
- SD-5 Soldier Pile Wall Details
- SD-6 HP Pile Details
- SD-7 Boring Logs



STATION 114+69.60
 BUILT 20.. BY
 STATE OF ILLINOIS
 F.A.I. 57 SEC. 99-1HB-R1
 LOADING HL-93
 STR. NO. 099-0609

NAME PLATE
 (See Hwy. Std. 515001)

FILE NAME TYLIN INTERNATIONAL	USER NAME	DESIGNED - SP	REVISION 1/6/2014 S.P.	STATE OF ILLINOIS DEPARTMENT OF TRANSPORTATION	GENERAL NOTES, INDEX OF SHEETS & BILL OF MATERIAL STRUCTURE NO. 099-0609	F.A.I. RTE.	SECTION	COUNTY	TOTAL SHEETS	SHEET NO.
	CHECKED - TCC	REVISION	57			99-1HB-R1	WILL	679	384	
	PLOT SCALE - DRAWN - SP/TCC	REVISION	CONTRACT NO. 60L69							
	PLOT DATE - CHECKED - RH	REVISION	ILLINOIS FED. AID PROJECT							

Entire Sheet Revised

F:\6026\60261\57_0_Superhigh\Structural\Struct\change\culverts\Temp_Accurrent\drawings\Ramp_Culv_GenData.dgn 4-47-12 PM 1/3/2014