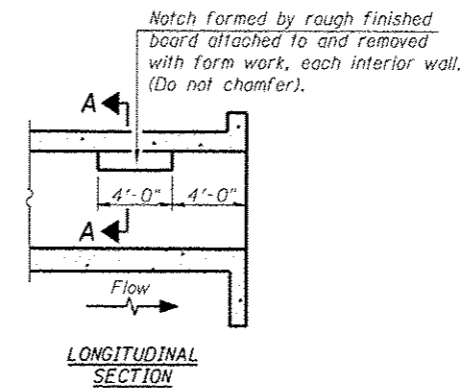
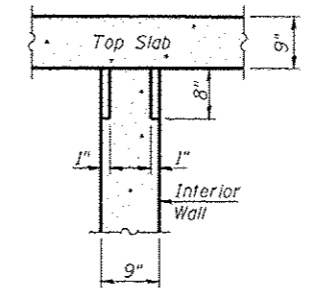


HALF SECTION THRU BARREL

HALF END ELEVATION

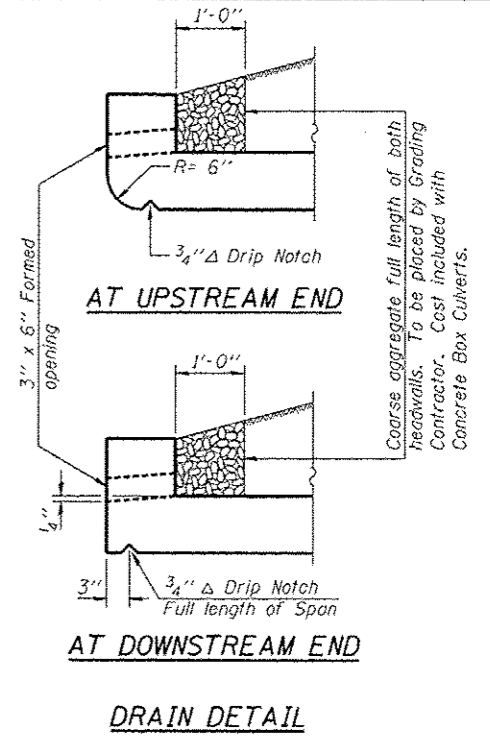


LONGITUDINAL SECTION



SECTION A-A

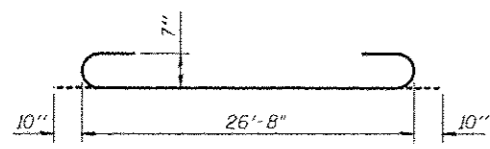
PHOEBE NESTING SITE DETAILS (Downstream End Only)



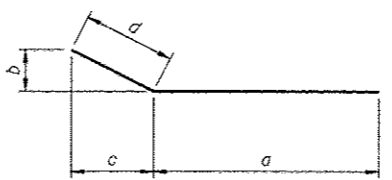
AT UPSTREAM END

AT DOWNSTREAM END

DRAIN DETAIL

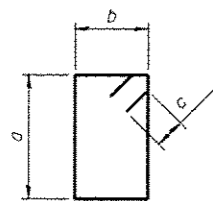


BAR a1



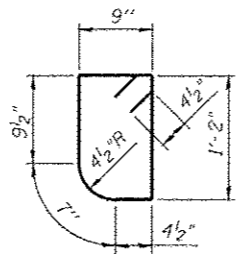
BARS h5 through h12

Bar	a	b	c	d
h5	5'-0"	1'-6"	2'-7 1/4"	3'-0"
h6	5'-0"	2'-7 1/4"	1'-6"	3'-0"
h7	13'-4"	1'-6"	2'-7 1/4"	3'-0"
h8	12'-2"	2'-7 1/4"	1'-6"	3'-0"
h9	5'-0"	2'-10"	1'-0"	3'-0"
h10	5'-0"	1'-0"	2'-10"	3'-0"
h11	11'-0"	2'-10"	1'-0"	3'-0"
h12	13'-3"	1'-0"	2'-10"	3'-0"

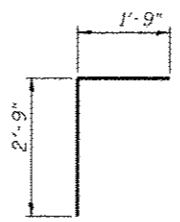


BAR s

Bar	a	b	c
s	1'-2"	9"	4 1/2"
s2	1'-2"	8"	5 1/2"
s3	6"	8"	5 1/2"



BAR s1



BAR d

BILL OF MATERIAL

Bar	No.	Size	Length	Shape
a	1040	#7	26'-8"	U
a1	1040	#7	28'-4"	U
d	68	#4	4'-6"	T
h	456	#5	37'-7"	—
h1	1216	#5	36'-6"	—
h2	9	#6	30'-5"	—
h3	9	#6	40'-10"	—
h5	16	#8	8'-0"	—
h6	18	#8	8'-0"	—
h7	14	#8	16'-4"	—
h8	12	#8	15'-2"	—
h9	15	#8	8'-0"	—
h10	13	#8	8'-0"	—
h11	10	#8	14'-0"	—
h12	13	#8	16'-3"	—
h16	12	#6	30'-10"	—
s	31	#4	4'-7"	□
s1	42	#4	4'-5"	□
s2	32	#5	4'-7"	□
s3	32	#5	3'-3"	□
v	2017	#7	8'-11"	—
v1	2017	#7	5'-0"	—
v2	16	#4	13'-1"	—
v3	8	#4	2'-6"	—
Concrete Box Culverts			Cu. Yd.	1,003.2
Reinforcement Bars			Pound	244,180