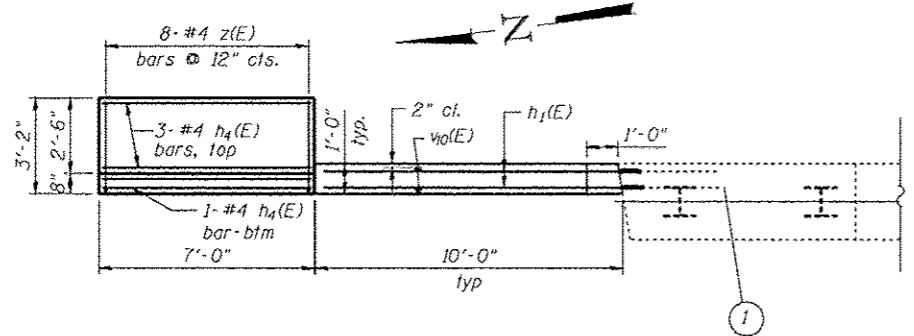
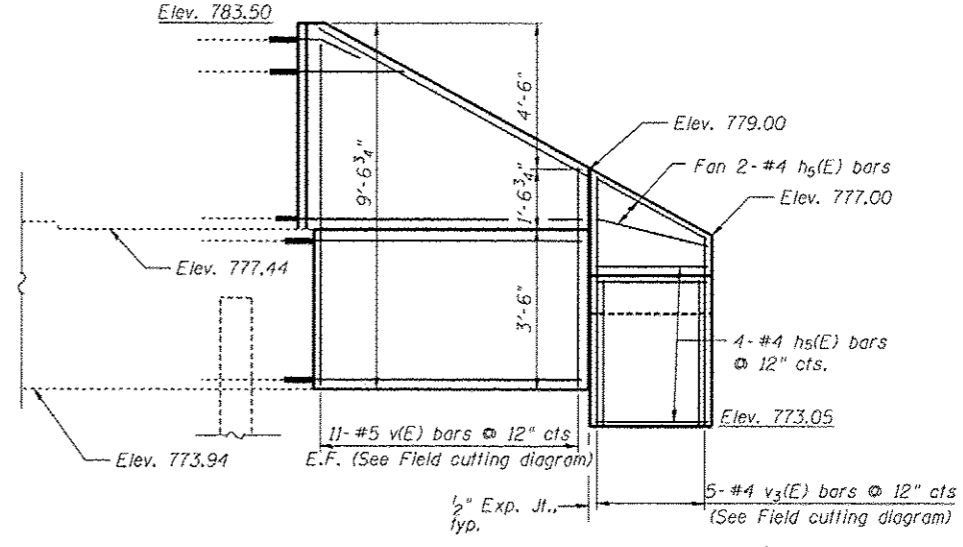
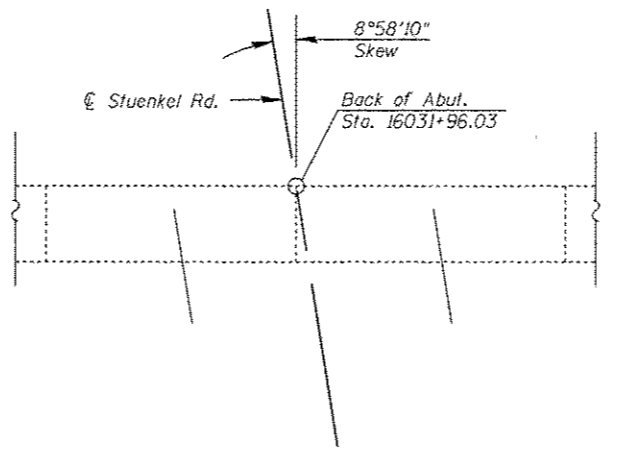


ELEVATION
(Looking East)

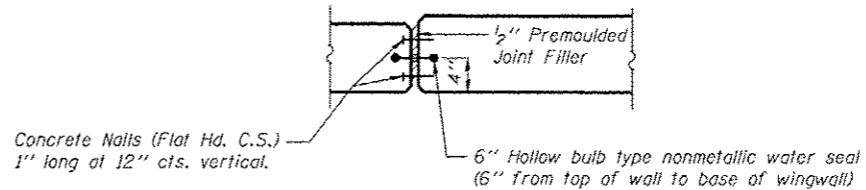
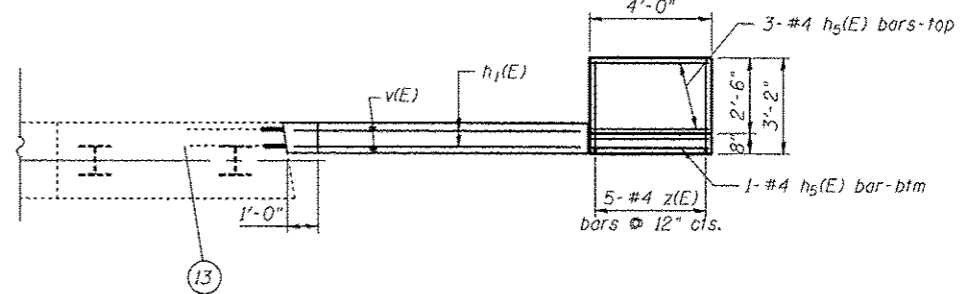


SECTION A-A

Max. Applied Service Bearing Pressure = 1,300psf



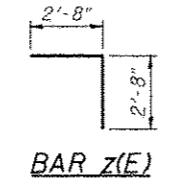
PLAN



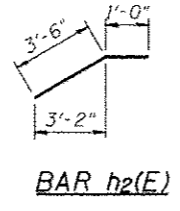
EXPANSION JOINT DETAIL

BILL OF MATERIAL

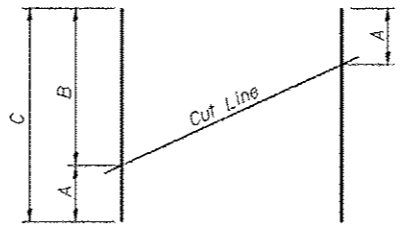
| Bar | No. | Size | Length | Shape |
|----------------------------------|-----|------|---------|-------|
| h(E) | 28 | #7 | 9'-9" | — |
| h1(E) | 40 | #5 | 9'-9" | — |
| h2(E) | 4 | #5 | 4'-6" | — |
| h3(E) | 4 | #5 | 9'-8" | — |
| h4(E) | 11 | #4 | 6'-9" | — |
| h5(E) | 10 | #4 | 3'-9" | — |
| v(E) | 11 | #5 | 14'-1" | — |
| v3(E) | 5 | #4 | 9'-4" | — |
| v10(E) | 11 | #5 | 16'-0" | — |
| v11(E) | 8 | #4 | 9'-6" | — |
| z(E) | 13 | #4 | 5'-4" | — |
| Structure Excavation | | | Cu. Yd. | 16 |
| Concrete Structures | | | Cu. Yd. | 8.4 |
| Reinforcement Bars, Epoxy Coated | | | Pound | 1580 |



BAR z(E)



BAR h2(E)



FIELD CUTTING DIAGRAM

Order bars full length. Cut as shown and use remainder of bars in opposite face.

FIELD CUTTING BAR DIMENSIONS

| Bar | A | B | C |
|--------|--------|--------|--------|
| v(E) | 4'-10" | 9'-3" | 14'-1" |
| v3(E) | 3'-8" | 5'-8" | 9'-4" |
| v10(E) | 5'-9" | 10'-3" | 16'-0" |
| v11(E) | 3'-0" | 6'-6" | 9'-6" |

TYLIN INTERNATIONAL

| | | |
|--------------|------------------|-------------------------|
| USER NAME = | DESIGNED - PK | REVISED - 1/6/2014 S.P. |
| FLOT SCALE = | CHECKED - SP | REVISED - |
| FLOT DATE = | DRAWN - PK | REVISED - |
| | CHECKED - SP/PDF | REVISED - |

STATE OF ILLINOIS
DEPARTMENT OF TRANSPORTATION

EAST ABUTMENT
STRUCTURE NO. 099-0526

SHEET NO. SA-10 OF SA-10 SHEETS

| | | | | |
|--------------------|-----------|--------|---------------------------|-----------|
| F.A.I. RTE. | SECTION | COUNTY | TOTAL SHEETS | SHEET NO. |
| 57 | 99-1HB-R1 | WILL | 679 | 362 |
| CONTRACT NO. 60L69 | | | ILLINOIS FED. AID PROJECT | |

Entire Sheet Revised

SHEET NO. SA-10 OF SA-10 SHEETS