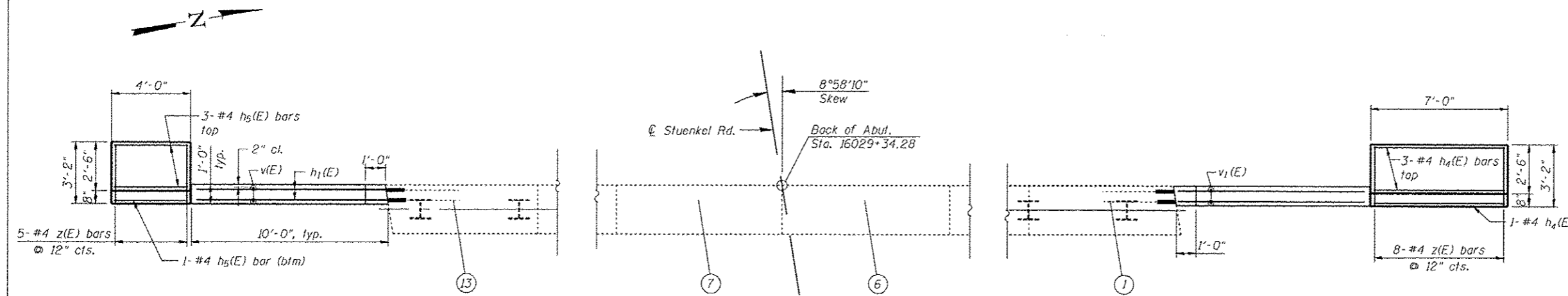
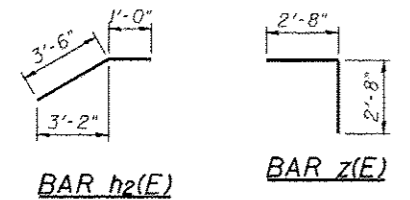


**ELEVATION**  
(Looking West)

**SECTION A-A**  
Max. Applied Service Bearing Pressure =  $O_{max} = 1,430\text{psf}$

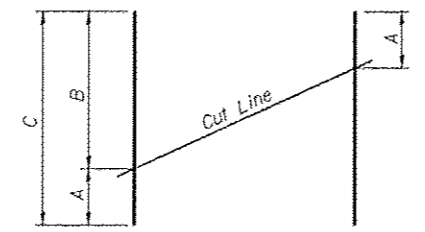


**PLAN**



**BAR h2(E)**

**BAR z(E)**

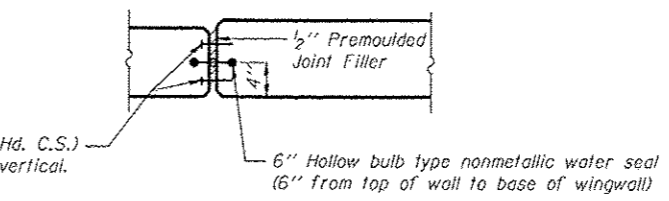


**FIELD CUTTING DIAGRAM**

Order bars full length. Cut as shown and use remainder of bars in opposite face.

**FIELD CUTTING BAR DIMENSIONS**

Bar	A	B	C
v1(E)	4'-10"	9'-3"	14'-1"
v1(E)	6'-0"	10'-6"	16'-6"
v2(E)	3'-9"	7'-3"	11'-0"
v3(E)	3'-8"	15'-8"	9'-4"



**EXPANSION JOINT DETAIL**

**BILL OF MATERIAL**

Bar	No.	Size	Length	Shape
h1(E)	28	#7	9'-9"	—
h1(E)	40	#5	9'-9"	—
h2(E)	4	#5	4'-6"	—
h3(E)	4	#5	9'-8"	—
h4(E)	12	#4	6'-9"	—
h5(E)	10	#4	3'-9"	—
v1(E)	11	#5	14'-1"	—
v1(E)	11	#5	16'-6"	—
v2(E)	8	#4	11'-0"	—
v3(E)	5	#4	9'-4"	—
z(E)	13	#4	5'-4"	—
Structure Excavation		Cu. Yd.		16
Concrete Structures		Cu. Yd.		8.5
Reinforcement Bars, Epoxy Coated		Pound		1600