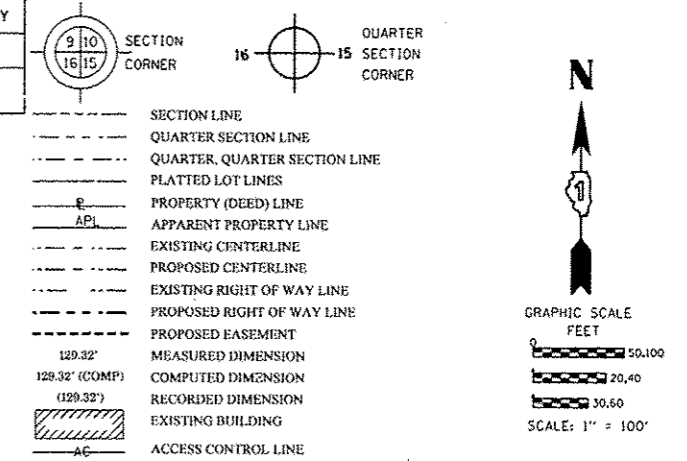


PART OF THE SE.1/4 OF SECTION 5 AND PART OF THE NE.1/4 OF SECTION 8, TWP. 34 N., R. 13 E. OF THE 3RD. P.M., IN WILL COUNTY, ILLINOIS.

NOTES:
 COORDINATES SHOWN HEREON ARE GROUND BASED PROJECT COORDINATES. THE COMBINED SCALE FACTOR IS 0.9999658. MULTIPLY PROJECT COORDINATES BY 0.9999658, THEN ADD 59.674 TO NORTHINGS, AND ADD 38.967 TO EASTINGS TO OBTAIN ILLINOIS STATE PLANE EAST ZONE NAD83 (2007) GRID COORDINATES. GROUND PROJECT COORDINATES ARE THE SAME AS ILLINOIS STATE PLANE GRID COORDINATES AT THE SOUTHEAST CORNER OF SECTION 6 (POINT NO. 5310), BEING NORTH 1744850.307, EAST 1139396.059.

PARCEL NUMBER	OWNER	TOTAL HOLDINGS ACRES	PART TAKEN ACRES	AREA IN EXISTING R.O.W. ACRES	REMAINDER AREA ACRES	EASEMENT AREA ACRES	EASEMENT SQUARE FEET	EASEMENT PURPOSE	PERMANENT INDEX NUMBER	PROPERTY ACQUIRED BY
IJB0032	TCB NWC VENTURE, LLC, A DELAWARE LIMITED LIABILITY CO.	40.503	1.454	N/A	39.049	N/A	N/A	N/A	14-05-401-001	
IJB0033	LBUBS 2007-CI 450 INDUSTRIAL, LLC AN ILLINOIS LIMITED LIABILITY COMPANY	37.470	2.482	N/A	34.988	N/A	N/A	N/A	14-08-200-005	

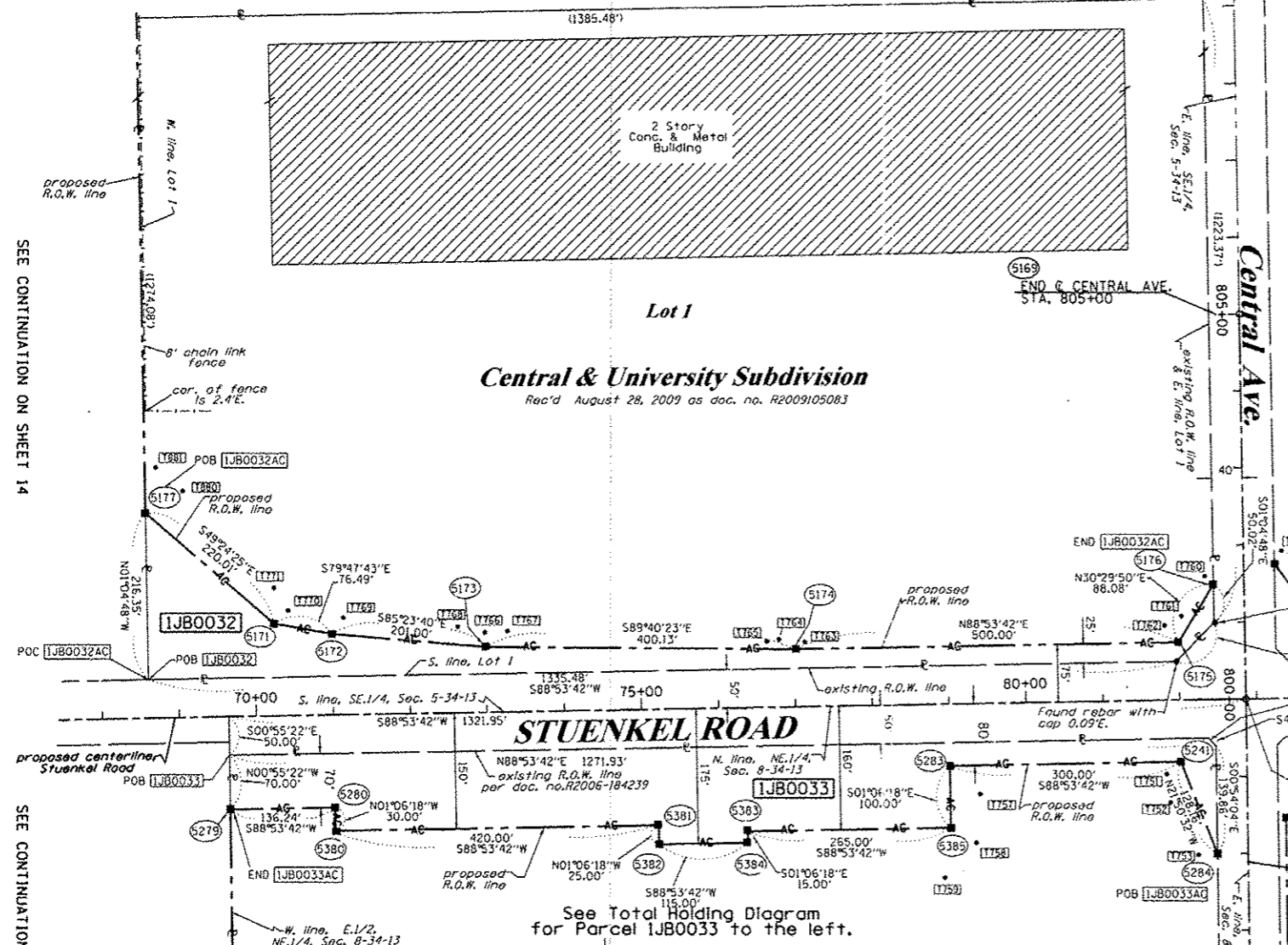
LEGEND



COORDINATE TABLE

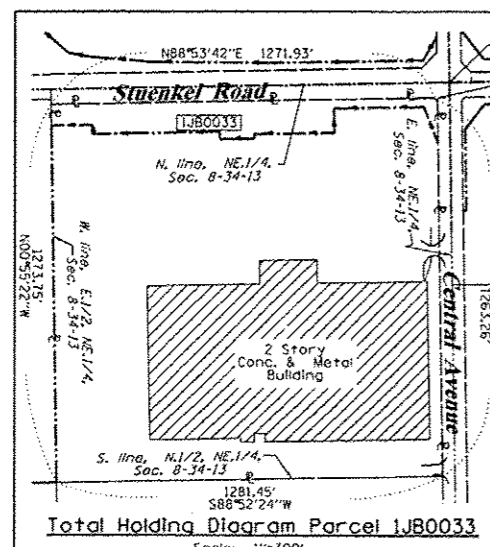
STATION	OFFSET	PT#	NORTH	EAST
82+86.09	0.00' RT.	51	1744951.951	1144682.426
70+25.00	120.00' LT.	5171	1745047.607	1143419.256
71+00.00	105.00' LT.	5172	1745034.056	1143494.532
73+00.00	85.00' LT.	5173	1745017.917	1143694.880
77+00.00	75.00' LT.	5174	1745015.634	1144094.999
82+00.00	75.00' LT.	5175	1745025.277	1144594.906
82+46.16	150.02' LT.	5176	1745101.171	1144639.606
68+60.73	266.35' LT.	5177	1745190.765	1143252.190
82+00.00	80.00' RT.	5241	1744870.306	1144597.895
69+63.76	120.00' RT.	5279	1744806.470	1143362.659
71+00.00	120.00' RT.	5280	1744809.098	1143498.871
79+00.00	80.00' RT.	5283	1744864.520	1144297.951
82+45.38	199.86' RT.	5284	1744751.347	1144645.577
71+00.00	150.00' RT.	5380	1744779.104	1143499.450
75+20.00	150.00' RT.	5381	1744787.204	1143919.372
75+20.00	175.00' RT.	5382	1744762.209	1143919.854
76+35.00	160.00' RT.	5383	1744779.424	1144034.543
76+35.00	175.00' RT.	5384	1744764.427	1144034.832
79+00.00	160.00' RT.	5385	1744784.535	1144299.494

STATION	OFFSET	PT#	NORTH	EAST
800+00.00	0.00' RT.	51	1744951.951	1144682.426
795+00.00	0.00' RT.	5168	1744452.013	1144690.290
805+00.00	0.00' RT.	5169	1744551.863	1144673.001
800+74.96	86.12' LT.	5175	1745025.277	1144594.906
801+50.00	40.00' LT.	5176	1745101.171	1144639.606
799+19.69	85.80' LT.	5241	1744870.306	1144597.895
798+00.00	40.00' LT.	5284	1744751.347	1144645.577



See Total Holding Diagram for Parcel IJB0033 to the left.

FROM	BEARING/ANGLE	DISTANCE	TO	DESCRIPTION
5171	NE 85°03'27"	90.15	769	5/8" REBAR WITH CAP
5171	NE 47°26'06"	24.82	770	5/8" REBAR WITH CAP
5171	NW 00°10'15"	46.75	771	5/8" REBAR WITH CAP
5172	NE 86°20'31"	163.70	768	5/8" REBAR WITH CAP
5172	NE 34°17'55"	25.81	769	5/8" REBAR WITH CAP
5172	NW 61°58'12"	64.57	770	5/8" REBAR WITH CAP
5173	NW 03°59'23"	38.97	766	5/8" REBAR WITH CAP
5173	NE 53°03'49"	34.84	767	5/8" REBAR WITH CAP
5173	NW 54°34'24"	45.37	768	5/8" REBAR WITH CAP
5174	NE 54°41'17"	16.34	763	5/8" REBAR WITH CAP
5174	NW 57°52'37"	23.83	764	5/8" REBAR WITH CAP
5174	NW 74°10'43"	37.53	765	5/8" REBAR WITH CAP
5175	NE 21°04'41"	92.61	760	5/8" REBAR WITH CAP
5175	NE 05°23'31"	34.39	761	5/8" REBAR WITH CAP
5175	NW 41°08'47"	28.76	762	5/8" REBAR WITH CAP
5176	NW 47°17'25"	15.51	760	5/8" REBAR WITH CAP
5176	SW 44°52'07"	58.78	761	5/8" REBAR WITH CAP
5176	SW 49°33'10"	83.60	762	5/8" REBAR WITH CAP
5241	SW 49°14'26"	24.42	751	5/8" REBAR WITH CAP
5241	SE 10°51'05"	122.56	753	5/8" REBAR WITH CAP
5241	SW 80°46'54"	263.51	757	5/8" REBAR WITH CAP
5279	SW 87°56'20"	232.99	748	5/8" REBAR WITH CAP
5279	SW 82°12'54"	121.23	749	5/8" REBAR WITH CAP
5279	SW 46°00'16"	85.17	750	5/8" REBAR WITH CAP



Total Holding Diagram Parcel IJB0033

*5280	SW 88°17'30"	369.21	748	5/8" REBAR WITH CAP
*5280	SW 85°44'59"	257.03	749	5/8" REBAR WITH CAP
*5280	SW 72°37'34"	206.93	750	5/8" REBAR WITH CAP
*5283	SE 87°56'01"	281.63	751	5/8" REBAR WITH CAP
*5283	SE 47°33'37"	103.98	757	5/8" REBAR WITH CAP
*5283	SE 19°18'02"	35.43	758	5/8" REBAR WITH CAP
*5284	NW 32°42'56"	122.44	751	5/8" REBAR WITH CAP
*5284	SW 86°43'48"	24.65	753	5/8" REBAR WITH CAP
*5284	SW 84°53'07"	355.17	759	5/8" REBAR WITH CAP
*5380	NW 87°03'34"	370.11	748	5/8" REBAR WITH CAP
*5380	NW 87°33'37"	257.14	749	5/8" REBAR WITH CAP
*5380	SW 80°52'49"	200.60	750	5/8" REBAR WITH CAP
*5381	NE 84°25'07"	420.41	757	5/8" REBAR WITH CAP
*5381	SE 86°55'39"	414.02	758	5/8" REBAR WITH CAP
*5381	SE 79°43'28"	378.52	759	5/8" REBAR WITH CAP
*5382	NE 81°02'30"	423.10	757	5/8" REBAR WITH CAP
*5382	NE 89°36'39"	412.96	758	5/8" REBAR WITH CAP
*5382	SE 83°28'40"	374.39	759	5/8" REBAR WITH CAP
*5383	NE 80°52'56"	307.13	757	5/8" REBAR WITH CAP
*5383	SE 87°14'02"	298.60	758	5/8" REBAR WITH CAP
*5383	SE 76°55'38"	264.12	759	5/8" REBAR WITH CAP
*5384	NE 78°07'56"	309.57	757	5/8" REBAR WITH CAP
*5384	NE 89°53'14"	297.97	758	5/8" REBAR WITH CAP
*5384	SE 80°07'24"	260.85	759	5/8" REBAR WITH CAP
5385	NE 83°22'02"	786.85	752	5/8" REBAR WITH CAP
5385	NE 41°19'18"	58.00	757	5/8" REBAR WITH CAP
5385	SW 06°45'03"	65.31	759	5/8" REBAR WITH CAP

ILLINOIS PROFESSIONAL LAND SURVEYOR NO. 2630
 LICENSE EXPIRATION DATE: 11-30-2012
 THIS PROFESSIONAL SERVICE CONFORMS TO THE CURRENT ILLINOIS MINIMUM STANDARDS FOR A BOUNDARY SURVEY.



RUETTIGER, TONELLI & ASSOCIATES, INC.
 Land Surveyors/Engineers/Planners/Landscape Architects/C.I.E. Consultants
 2174 ONEIDA STREET
 JOLIET, ILLINOIS 62445
 PH. (815) 744-6600 FAX (815) 744-0101

PLAT OF HIGHWAYS
 STATE OF ILLINOIS
 DEPARTMENT OF TRANSPORTATION
 I-57

LIMITS: @ Stuenkel Rd. COUNTY: WILL
 PROJECT 68+00 JOB NO.: R91-037-09
 STATION 68+00 TO STATION 85+00
 SCALE: 1"=100' SHEET 17 OF 21

BUREAU OF LAND ACQUISITION
 201 WEST CENTER COURT 679 | 243
 SCHAMBURG, ILLINOIS 60196