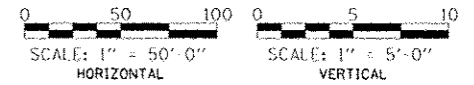
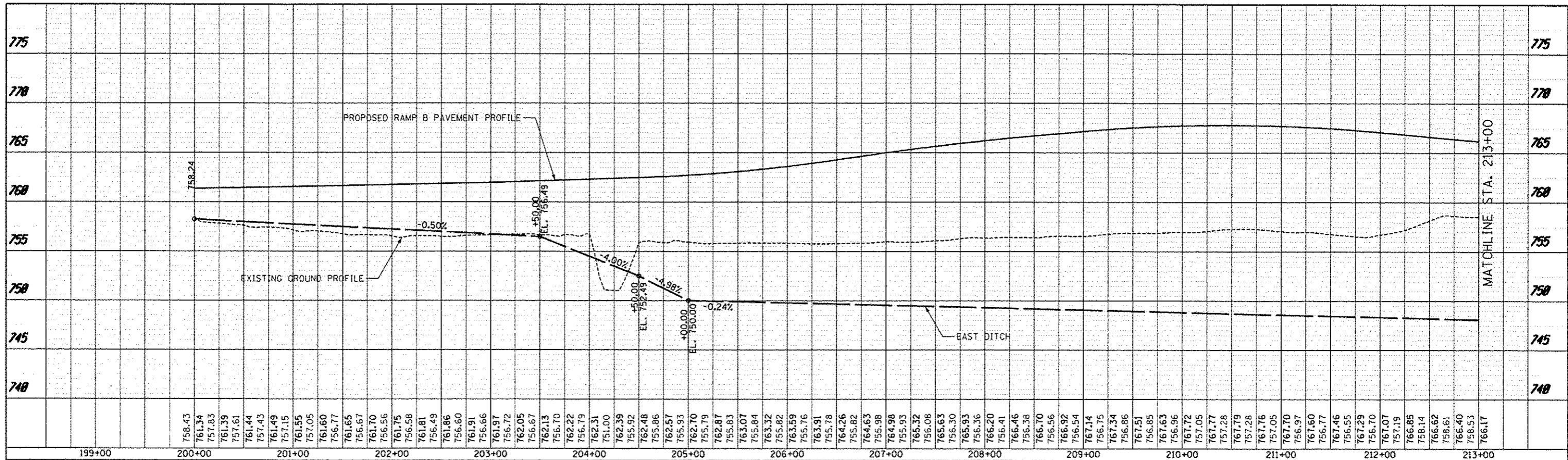
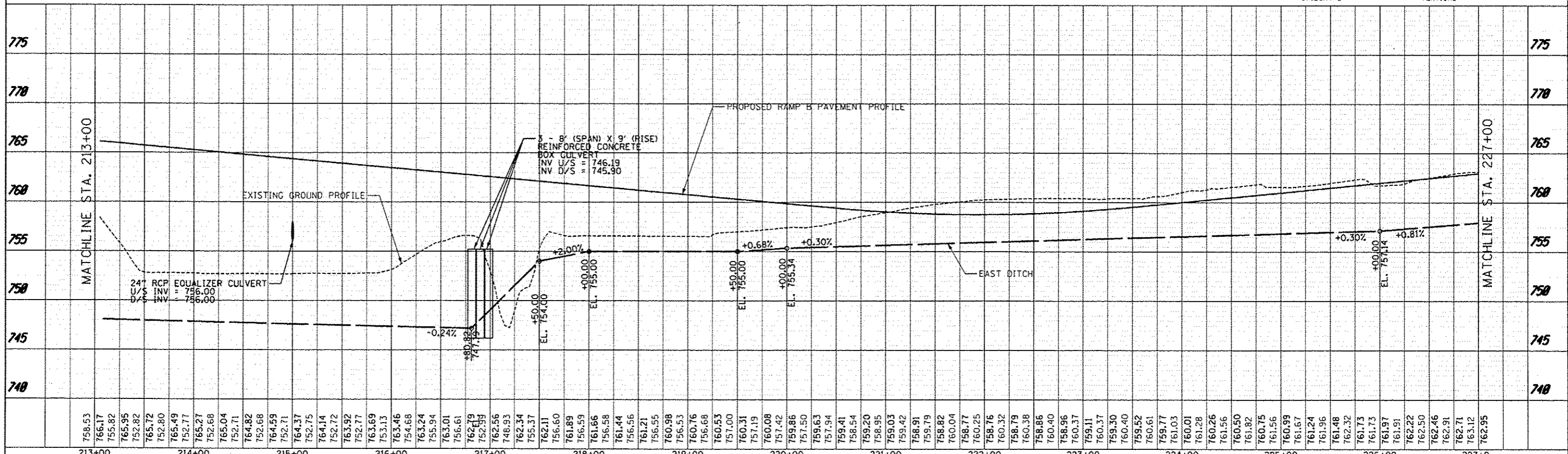


PLAN	DATE
REVISED	
NOTED	
NO. 1	
NO. 2	
NO. 3	
NO. 4	
NO. 5	
NO. 6	
NO. 7	
NO. 8	
NO. 9	
NO. 10	



PROFILE	DATE
REVISED	
NOTED	
NO. 1	
NO. 2	
NO. 3	
NO. 4	
NO. 5	
NO. 6	
NO. 7	
NO. 8	
NO. 9	
NO. 10	



TYLIN INTERNATIONAL	USER NAME	DESIGNED	PP	REVISED	10/18/2013	STATE OF ILLINOIS DEPARTMENT OF TRANSPORTATION	STUENKEL ROAD AT I-57 RIDGELAND AVENUE TO CENTRAL AVENUE PROPOSED DRAINAGE PROFILE - RAMP B	F.A.I. RTE.	SECTION	COUNTY	TOTAL SHEETS	SHEET NO.
	PLLOT SCALE	CHECKED	JPM	REVISED				57	99-IHB-RI	WILL	679	207
	PLLOT DATE	DATE	05/10/2013	REVISED				CONTRACT NO. 60L69				
	SCALE: 1" = 50'			SHEET 23 OF 29 SHEETS				STA. 200+00 TO STA. 227+00			ILLINOIS FED. AID PROJECT	