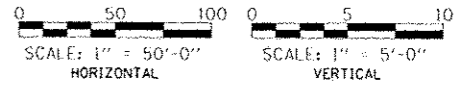
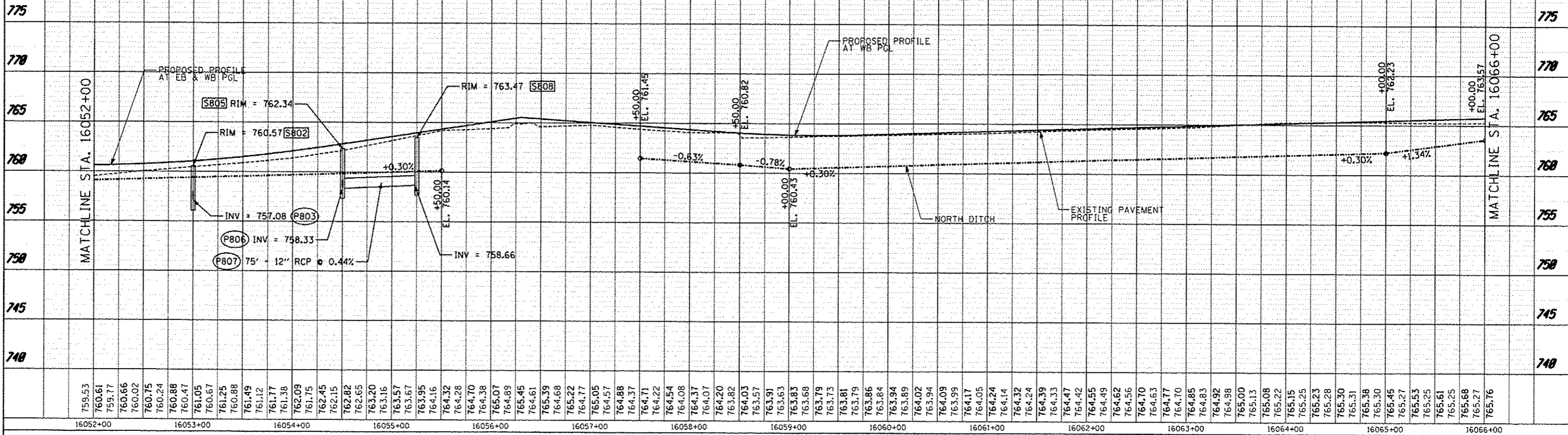


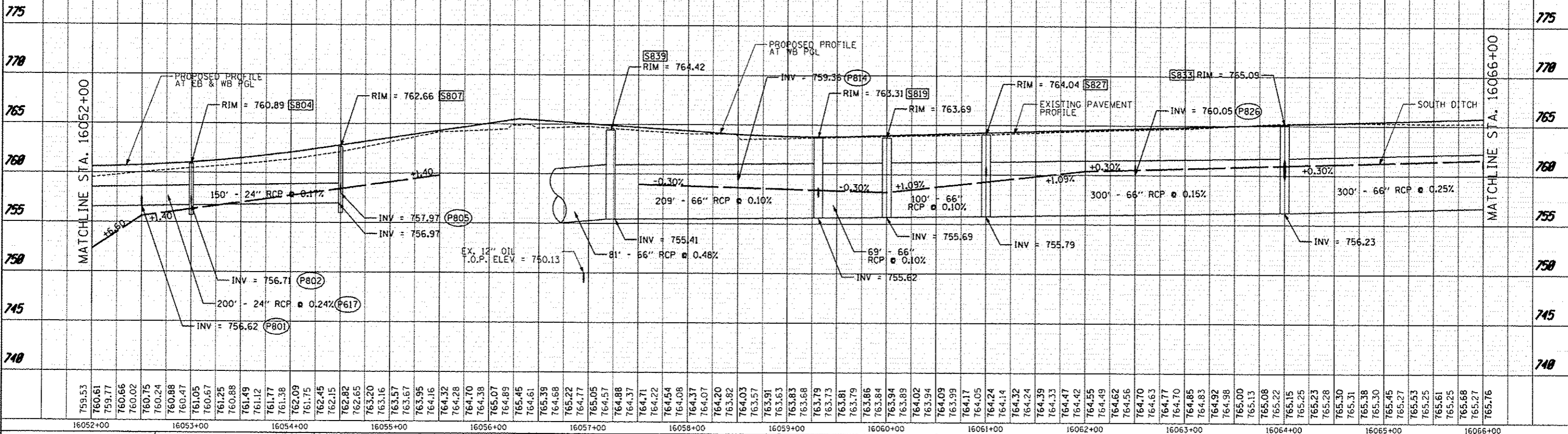
PLAN	DATE
REVISIONS	
NO.	
BY	
CHECKED	
DATE	
PROJECT	
DATE	
BY	
CHECKED	
DATE	

PROFILE	DATE
REVISIONS	
NO.	
BY	
CHECKED	
DATE	
PROJECT	
DATE	
BY	
CHECKED	
DATE	

PROPOSED NORTH DITCH PROFILE



PROPOSED SOUTH DITCH PROFILE



TYLIN INTERNATIONAL	DESIGNED	PP	REVISION	06/21/2013	STATE OF ILLINOIS DEPARTMENT OF TRANSPORTATION	STUENKEL ROAD AT I-57 RIDGELAND AVENUE TO CENTRAL AVENUE PROPOSED DRAINAGE PLAN AND PROFILE - STUENKEL ROAD	F.A.J. RTE. 57	SECTION 99-1HB-RI	COUNTY WILL	TOTAL SHEETS	679	SHEET NO.	193			
	DRAWN	PP	REVISION	10/18/2013												
	CHECKED	JPM	REVISION													
	DATE	05/10/2013	REVISION													
SCALE: 1" = 50'											SHEET 9 OF 29 SHEETS		STA. 16052+00 TO STA. 16066+00		ILLINOIS FED. AID PROJECT	

P:\0626120-57-0-Stuenkel\Road\NC_3\interchange\NC3-Stuenkel_DPP\01.dwg

5:56:06 PM 07/27/2013