



EXISTING POND (PRIVATE)
N.W.E. = 762.00

POND OVERFLOW
ELEVATION = 763.50

PROPOSED R.O.W. PROPOSED ACCESS CONTROL AC

MATCHLINE STA. 127+00
SEE RAMP A
EX. 15" RCP PIPE CULVERT
U/S INV = 751.66
D/S INV = 750.98
55 LF
SLOPE = 1.24%

MATCHLINE STA. 16010+00

MATCHLINE STA. 16024+00

STUENKEL ROAD STUENKEL ROAD EX. 15" CMP PIPE CULVERT EX. 18" STORM SEWER (LOCAL) TO BE REMOVED EX. 18" STORM SEWER (LOCAL) TO BE REMOVED

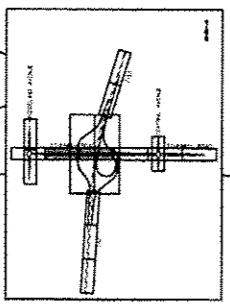
16010+00 16015+00 16020+00

760 760 760

MATCHLINE STA. 501+00
SEE RAMP E

TEMPORARY EASEMENT

0 50 100
SCALE: 1" = 50'-0"



MATCHLINE STA. 16024+00

5" CMP CULVERT
INV = 751.66
INV = 750.98
55 LF
SLOPE = 1.24%

16025+00 16030+00 16035+00

EXISTING R.O.W. STUENKEL ROAD STUENKEL ROAD EX. 15" CMP PIPE CULVERT

MATCHLINE STA. 16038+00

RAMP D
MATCHLINE STA. 405+00
SEE RAMP D

0 50 100
SCALE: 1" = 50'-0"

TYLIN INTERNATIONAL	USER NAME	DESIGNED - PP	REVISED -
	PLIST SCALE	DRAWN - PP	REVISED -
	PLIST DATE	CHECKED - JPM	REVISED -
		DATE - 05/10/2013	REVISED -

**STATE OF ILLINOIS
DEPARTMENT OF TRANSPORTATION**

**STUENKEL ROAD AT I-57 RIDGELAND AVENUE TO CENTRAL AVENUE
EXISTING DRAINAGE PLAN - STUENKEL ROAD**

SCALE: 1" = 50' SHEET 2 OF 13 SHEETS STA. 16010+00 TO STA. 16038+00

F.A. RTE. 57	SECTION 99-1HB-RI	COUNTY WILL	TOTAL SHEETS 679	SHEET NO. 173
				CONTRACT NO. 60L69

ILLINOIS FED. AID PROJECT

P:\60261201-57 @ Stuenkel\A\Road\AC 3\Interchange\AC3 Stuenkel DLX02.dwg