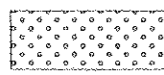
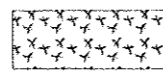


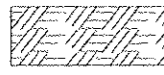
LANDSCAPING LEGEND:



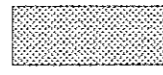
SEEDING, CLASS 2A
NITROGEN, PHOSPHORUS, AND POTASSIUM
FERTILIZER NUTRIENTS
TOPSOIL EXCAVATION AND PLACEMENT, 12"



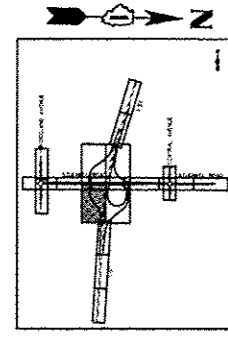
SEEDING, CLASS 4B (MOD.)
TOPSOIL EXCAVATION AND PLACEMENT, 12"



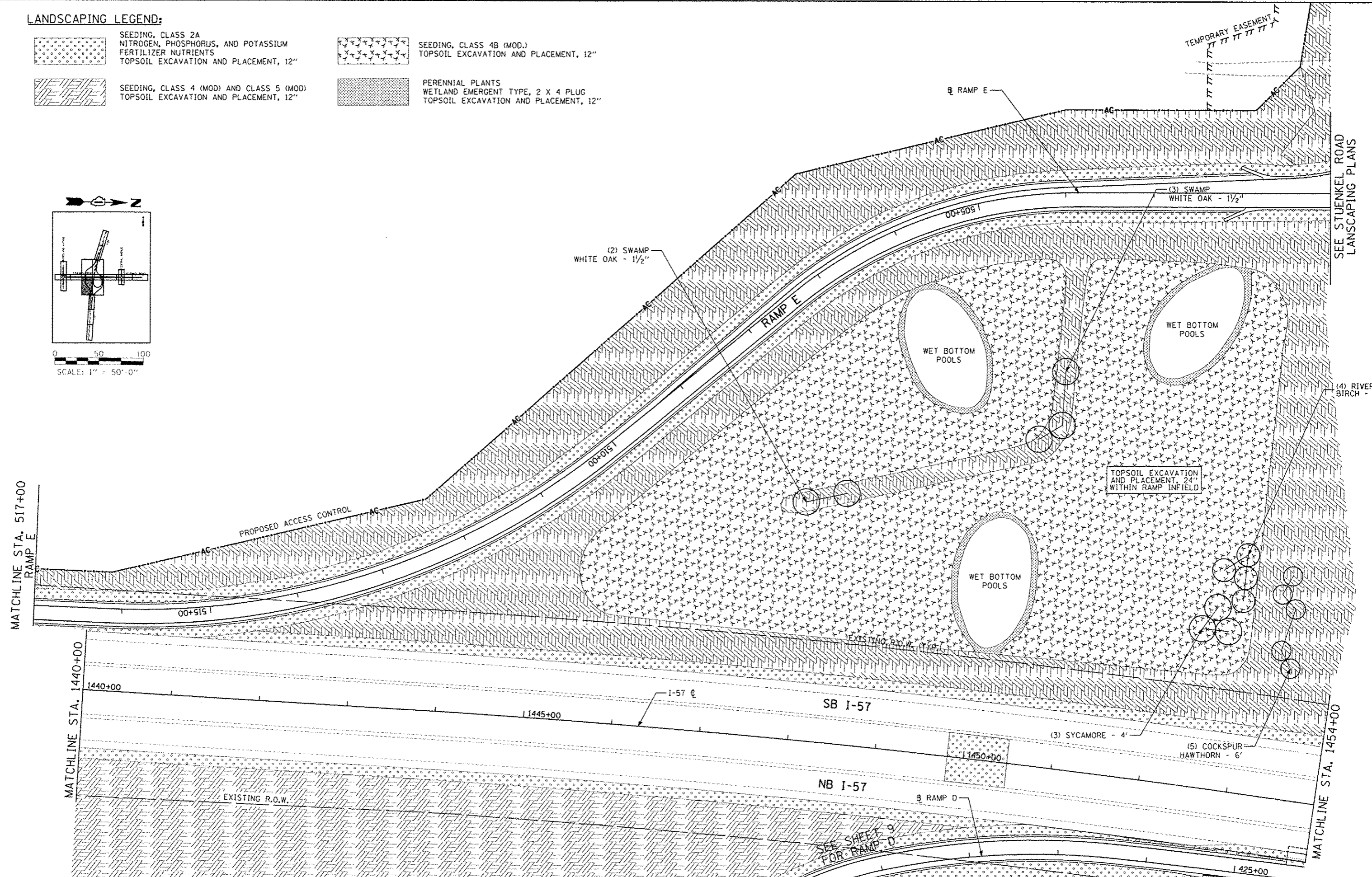
SEEDING, CLASS 4 (MOD) AND CLASS 5 (MOD)
TOPSOIL EXCAVATION AND PLACEMENT, 12"



PERENNIAL PLANTS
WETLAND EMERGENT TYPE, 2 X 4 PLUG
TOPSOIL EXCAVATION AND PLACEMENT, 12"



0 50 100
SCALE: 1" = 50'-0"



SEE STUENKEL ROAD
LANDSCAPING PLANS

TYLIN INTERNATIONAL

USER NAME	DESIGNED	PP	REVISED
PLT1 SCALE	DRAWN	DPS	REVISED
PLT1 DATE	CHECKED	JPM	REVISED
	DATE	05/10/2013	REVISED

STATE OF ILLINOIS
DEPARTMENT OF TRANSPORTATION

STUENKEL ROAD AT I-57 RIDGELAND AVENUE TO CENTRAL AVENUE
RAMP E LANDSCAPING PLAN

SCALE: 1" = 50' SHEET 8 OF 12 SHEETS STA. 517+00 TO STA. 501+00

F.A.I. RTE.	SECTION	COUNTY	TOTAL SHEETS	SHEET NO.
57	99-1HB-R1	WILL	679	167
			CONTRACT NO. 60L69	
ILLINOIS FED. AID PROJECT				

P:\50261241-57 - Stuenkel Road\GIS\Interchange\N03_5tuenkel_1.N000.dgn