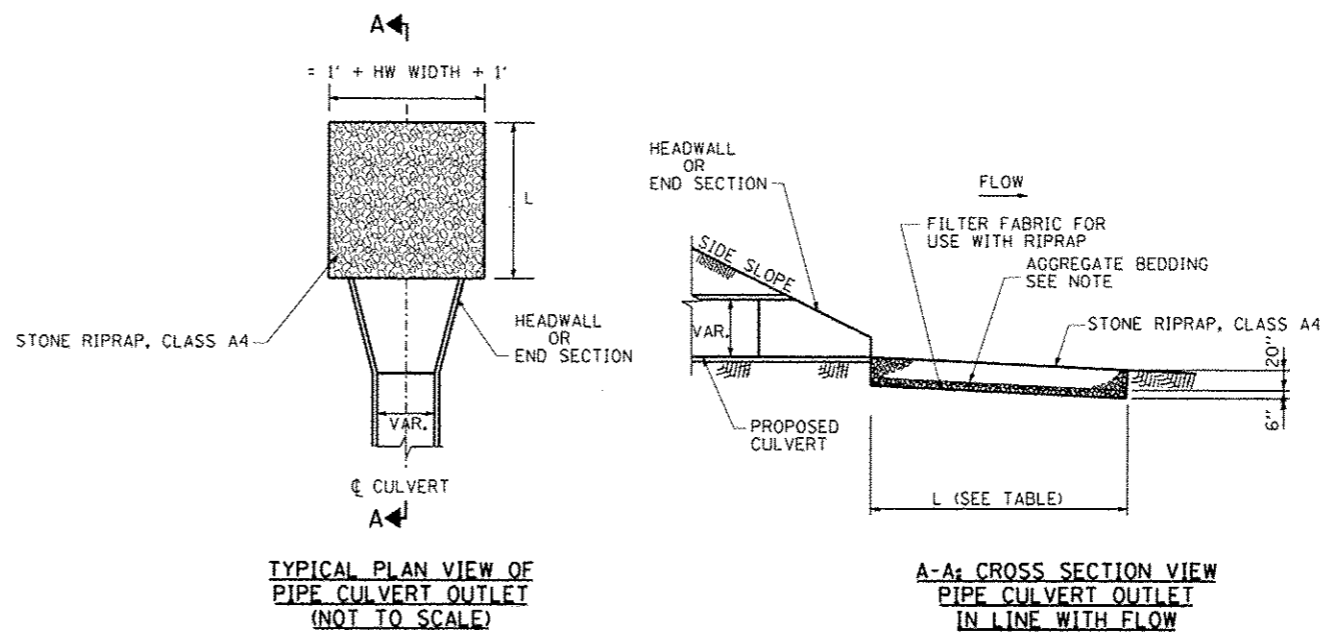


EROSION AND SEDIMENT CONTROL GENERAL NOTES

1. THE WORK DESCRIBED ON THESE DRAWINGS ARE AN INTEGRAL PART OF THE STORM WATER POLLUTION PREVENTION PLAN USED TO OBTAIN A NPDES PERMIT FROM IEPA FOR THE CONSTRUCTION OF THIS PROJECT. CONTRACTOR'S STORM WATER POLLUTION PREVENTION PLAN SHALL BE IN COMPLIANCE WITH EROSION CONTROL GUIDELINES OF THE ILLINOIS URBAN MANUAL (IUM).
2. THE PURPOSE OF THE EROSION AND SEDIMENT CONTROL MEASURES INCLUDED FOR THIS PROJECT IS TO LIMIT THE SEDIMENT POLLUTION IMPACT OF STORM WATER DISCHARGES THAT ORIGINATE ON THIS SITE OR OFF-SITE FLOWS THAT FLOW OVER THE DISTURBED AREAS, TO DOWNSTREAM AREAS.
3. IT IS THE RESPONSIBILITY OF THE CONTRACTOR TO INSURE THAT SEDIMENT TRANSPORT OFF THE SITE IS REDUCED BY A COMBINATION OF MINIMIZATION OF EROSION AT THE SOURCE AND INSTALLATION OF SPECIFIC MEASURES TO CONTROL OR REDUCE THE TRANSPORT OF SEDIMENT. A COPY OF THE EROSION AND SEDIMENT CONTROL SCHEDULE BEING IMPLEMENTED BY THE CONTRACTOR WILL BE ON THE CONSTRUCTION SITE AT ALL TIMES. CONTRACTOR SHALL ALSO ISSUE A COPY TO IDOT RESIDENT ENGINEER.
4. TO THE MAXIMUM EXTENT POSSIBLE, ALL FLOWS ORIGINATING OFF THE CONSTRUCTION SITE WILL BE DIVERTED AROUND DISTURBED AREAS OR WILL BE CONVEYED THROUGH THE SITE IN A MANNER THAT UNTREATED ON-SITE RUNOFF DOES NOT MIX WITH THE OFF-SITE RUNOFF.
5. ALL RUNOFF ORIGINATING ON DISTURBED AREAS ASSOCIATED WITH THE PROJECT WILL PASS THROUGH ONE OR MORE MEASURES THAT WILL MINIMIZE THE OFF-SITE SEDIMENT IMPACTS OF THE CONSTRUCTION ACTIVITY.
6. ALL PERMANENT SEDIMENT BASINS, PERMANENT STORM WATER CONTROL MEASURES, AND RUNOFF CONTROL MEASURES REQUIRED TO KEEP OFF-SITE RUNOFF FROM FLOWING OVER THE CONSTRUCTION AREA WILL BE INSTALLED BEFORE CLEARING AND STRIPPING OF THE SITE PROCEEDS. PRIOR TO PROCEEDING WITH GENERAL EARTH WORK ON A PROJECT THE CONTRACTOR WILL OBTAIN APPROVAL OF HIS PROPOSED EARTHWORK AND STABILIZATION SCHEDULE.
7. DISTURBED AREAS ARE TO BE PROTECTED FROM EROSION IN A TIMELY MANNER. UPON COMPLETION OF GRADING OR CONSTRUCTION, THE AREA WILL BE STABILIZED (USING PERMANENT MEASURES WHEN POSSIBLE) WITHIN 7 CALENDAR DAYS. TEMPORARY STABILIZATION THROUGH USE OF GROUND COVER, MULCHING, OR OTHER APPROVED MEASURE WILL BE INSTALLED WITHIN 7 DAYS WHENEVER SITE DEVELOPMENT WORK, GRADING, OR OTHER EARTH DISTURBING ACTIVITIES CEASE TO BE CONTINUOUS FOR A PERIOD EXCEEDING 14 CALENDAR DAYS. THE 7/14 DAY REQUIREMENT IS TAKEN TO MEAN THAT THE STABILIZATION OPERATION IS COMPLETE OR NEARING COMPLETION IN THE DEFINED TIME.
8. STABILIZATION OF CUT OR FILL SLOPES WITH TEMPORARY OR PERMANENT EROSION CONTROL MEASURE IS REQUIRED WHENEVER THE CUT OR FILL ACTIVITY REACHES 10 FEET VERTICALLY OR THE FINISHED SLOPE EQUALS 30 FEET, WHICHEVER IS MORE RESTRICTIVE. ONCE THE STABILIZATION MEASURES ARE INSTALLED, THE PLACEMENT OF FILL EXCAVATION ACTIVITIES ARE ALLOWED TO PROCEED.
9. THE CONTRACTOR SHALL DESIGNATE ONE OF HIS EMPLOYEES AS RESPONSIBLE FOR IMPLEMENTATION OF THE EROSION AND SEDIMENT CONTROL PLAN ON ALL DISTURBED AREAS. THIS PERSON IS TO BE KNOWLEDGEABLE ABOUT INSTALLATION AND MAINTENANCE OF THE REQUIRED MEASURES. THIS EMPLOYEE IS TO HAVE THE AUTHORITY TO CARRY OUT THE IMPLEMENTATION OF ANY INSTRUCTIONS CONCERNING THE EROSION AND SEDIMENT CONTROL PLAN GIVEN BY THE ENGINEER. ALL MEASURES WILL BE INSPECTED BY THE INDIVIDUAL AND THE ENGINEER ON A REGULAR BASIS (AT LEAST ONCE EVERY 7 DAYS) AND AFTER RAINFALL EVENTS GREATER THAN 1.2 INCH OR EQUIVALENT SNOWFALL.
10. SEDIMENT TRAPS, SEDIMENT BASINS, DITCHES, SEDIMENT CONTROL, PERIMETER EROSION BARRIER, STONE OUTLET STRUCTURES, EARTH BERMS, ETC. SHALL BE MAINTAINED DURING THE CONSTRUCTION SEASON AS WELL AS THE WINTER MONTHS AND OTHER TIMES WHEN THE PROJECT IS CLOSED DOWN. TRAPS WILL BE CLEANED WHEN THEY ARE 50% FILLED. PERIMETER EROSION BARRIER AND STONE OUTLET STRUCTURES SHALL HAVE SEDIMENT REMOVED WHEN IT REACHES 50% THE HEIGHT OF THE CONTROL DEVICE. THESE SPOILS WILL BE REMOVED TO AN APPROVED SITE.
11. MATERIALS EXCAVATED FOR THE CONSTRUCTION OR CLEANOUT OF SEDIMENT TRAPS OR SEDIMENT BASINS SHALL NOT BE STOCKPILED IN THE VICINITY OF THE TRAP OR BASIN. IT WILL EITHER BE PLACED IN AN EMBANKMENT OR WASTED AS DIRECTED BY THE ENGINEER.
12. EXCAVATION TO BE USED FOR EMBANKMENTS SHALL NOT BE STOCKPILED UNLESS PERIMETER CONTROLS ARE UTILIZED. WHEN THIS MATERIAL IS STOCKPILED FOR THE CONVENIENCE OF THE CONTRACTOR THE COST OF THE CONTROLS ARE BORNE BY THE CONTRACTOR. IF THE MATERIAL IS STOCKPILED AT THE DIRECTION OF THE ENGINEER, THE DEPARTMENT WILL ASSUME THE COSTS OF THE CONTROLS.
13. SEDIMENT LADEN DEWATERING DISCHARGE MUST BE DIRECTED TO AN APPROVED SEDIMENT TRAPPING MEASURE PRIOR TO RELEASE FROM THE SITE.
14. WHEN THE CONTRACTOR REQUESTS A CHANGE TO POSTPONE COMPLETION OF THE EXCAVATION OF A SPECIFIC AREA AS A CONTINUOUS OPERATION AND PLACING THE TOPSOIL AS DEFINED IN THE STANDARD SPECIFICATIONS, THE ENGINEER MAY ALLOW THE CONTRACTOR TO STABILIZE THE AREA USING TEMPORARY STABILIZATION WITH STRAW MULCH PROVIDING THE FOLLOWING CONDITIONS ARE MET.
 - (A) ALL AREAS BEING STABILIZED ARE 3:1 SLOPES OR FLATTER
 - (B) THE CONTRACTOR BEARS THE COST OF PREPARING THE SEED BED AND STABILIZING THE AREA WITH TEMPORARY STABILIZATION WITH STRAW MULCH.
 - (C) ALL REQUIRED SEDIMENT CONTROL MEASURES FOR THE SECTION OF ROAD IN QUESTION HAVE BEEN INSTALLED ARE BEING MAINTAINED.

EROSION AND SEDIMENT CONTROL GENERAL NOTES (CONT.)

15. SEEDING USAGE:
TEMPORARY EROSION CONTROL SEEDING • USED IN SHORT TERM TEMPORARY SEEDING AREAS.
16. TOP SOIL PLACEMENT:
TOPSOIL WILL BE PLACED ON FINAL SLOPES WHICH WILL NOT BE DISTURBED BY FUTURE CONSTRUCTION. TOPSOIL WILL NOT BE PLACED ON SURFACES WHICH WILL BE PAVED IN THE FUTURE, NOR ON TEMPORARILY STEEP SLOPES.
17. THE CONSTRUCTION LIMITS WILL BE STAKED BY THE ENGINEER PRIOR TO COMMENCING CONSTRUCTIONS. THE CONSTRUCTION LIMITS MAY BE ADJUSTED BY THE ENGINEER TO PRESERVE TREES AND NO ADDITIONAL COMPENSATION WILL BE PAID TO THE CONTRACTOR FOR CHANGED CONSTRUCTION LIMITS.
18. THE RESIDENT ENGINEER SHALL HAVE FINAL DETERMINATION OF THE PLACEMENT AND LOCATION OF THE PERIMETER EROSION BARRIER.
19. EROSION CONTROL MEASURES SHALL BE REMOVED ONLY WHERE INDICATED ON THE PLANS. COST OF REMOVAL SHALL NOT BE PAID FOR SEPARATELY, BUT WILL BE INCLUDED IN THE CONTRACT UNIT PRICE FOR THE TYPE OF MEASURE INDICATED ON THE PLANS.
20. EXISTING ROW LINEWORK HAS BEEN OMITTED FOR CLARITY.
21. OFFSITE BORROW, WASTE, USE AREAS:
PRIOR TO WORKING IN AREAS APPROVED FOR BWU BY THE BDE 2290 PROCEDURES THE CONTRACTOR WILL NEED TO SUBMIT A BWU SITE WORK PLAN TO THE DEPARTMENT FOR APPROVAL. GUIDELINES ON ACCEPTABLE BWU SITE WORK TECHNIQUES CAN BE FOUND IN SECTION II.5. a. AND b. OF THE SWPPP. THE COST OF ALL MATERIALS AND LABOR NECESSARY TO COMPLY WITH THE ABOVE PROVISIONS TO PREPARE AND IMPLEMENT A BWU SITE WORK PLAN WILL NOT BE PAID FOR SEPARATELY, BUT SHALL BE CONSIDERED AS INCLUDED IN THE UNIT BID PRICES OF THE CONTRACT AND NO ADDITIONAL COMPENSATION WILL BE ALLOWED.
22. REINTRODUCTION OF FLOWS ALONG HICKORY CREEK SHALL BE INCLUDED IN CONTRACTOR'S IN-STREAM WORK PLAN.
23. CHANNEL SIDE SLOPES MUST BE STABILIZED BEFORE REINTRODUCING FLOWS.



RIPRAP APRON LENGTH BY OUTLET PIPE DIAMETER

PIPE DIA. (IN)	LENGTH OF RIPRAP APRON (FT)
15	14
18	14
24	16
30	18
36	20
48	24

NOTE: AGGREGATE BEDDING SHALL BE INCLUDED IN THE COST OF STONE RIPRAP, CLASS A4

PIPE CULVERT OUTLET DETAIL