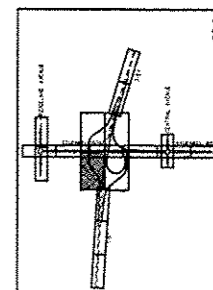
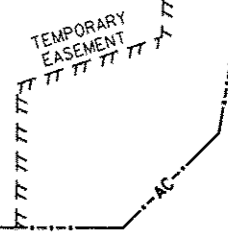


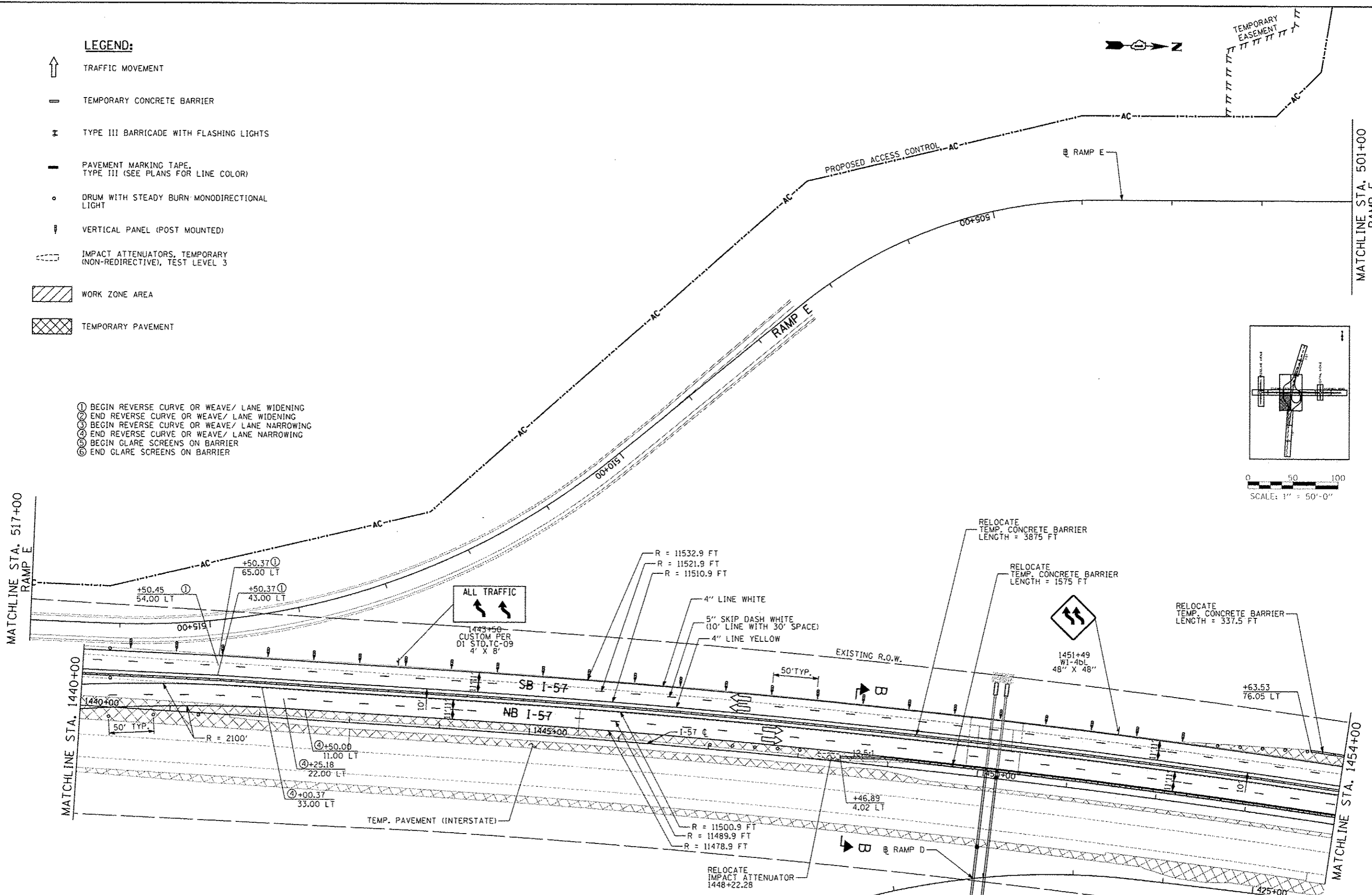
LEGEND:

- ↑ TRAFFIC MOVEMENT
- TEMPORARY CONCRETE BARRIER
- ⊠ TYPE III BARRICADE WITH FLASHING LIGHTS
- PAVEMENT MARKING TAPE, TYPE III (SEE PLANS FOR LINE COLOR)
- DRUM WITH STEADY BURN MONODIRECTIONAL LIGHT
- ↓ VERTICAL PANEL (POST MOUNTED)
- IMPACT ATTENUATORS, TEMPORARY (NON-REDIRECTIVE), TEST LEVEL 3
- ▨ WORK ZONE AREA
- ▩ TEMPORARY PAVEMENT

- ① BEGIN REVERSE CURVE OR WEAVE/ LANE WIDENING
- ② END REVERSE CURVE OR WEAVE/ LANE WIDENING
- ③ BEGIN REVERSE CURVE OR WEAVE/ LANE NARROWING
- ④ END REVERSE CURVE OR WEAVE/ LANE NARROWING
- ⑤ BEGIN GLARE SCREENS ON BARRIER
- ⑥ END GLARE SCREENS ON BARRIER



SCALE: 1" = 50'-0"



TYLIN INTERNATIONAL

DESIGNED	JTP	REVISED	10/18/2013
DRAWN	JTP	REVISED	
CHECKED	JPM	REVISED	
DATE	05/10/2013	REVISED	

**STATE OF ILLINOIS
DEPARTMENT OF TRANSPORTATION**

**STUENKEL ROAD AT I-57 RIDGELAND AVENUE TO CENTRAL AVENUE
MAINTENANCE OF TRAFFIC PLAN - I-57 STAGE 2**

F.A.I. RTE.	SECTION	COUNTY	TOTAL SHEETS	SHEET NO.
57	99-IHB-R1	WILL	679	140G
			CONTRACT NO. 60L69	
ILLINOIS FED. AID PROJECT				

SCALE: 1" = 50' SHEET 3 OF 6 SHEETS STA. 1440+00 TO STA. 1454+00