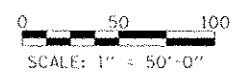
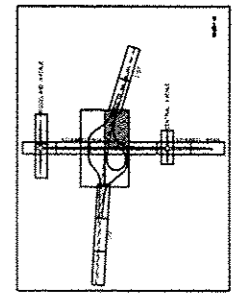


- LEGEND:**
- TRAFFIC MOVEMENT
 - TEMPORARY CONCRETE BARRIER
 - TYPE III BARRICADE WITH FLASHING LIGHTS
 - PAVEMENT MARKING TAPE, TYPE III (SEE PLANS FOR LINE COLOR)
 - DRUM WITH STEADY BURN MONODIRECTIONAL LIGHT
 - VERTICAL PANEL (POST MOUNTED)
 - IMPACT ATTENUATORS, TEMPORARY (NON-REDIRECTIVE), TEST LEVEL 3
 - WORK ZONE AREA
 - TEMPORARY PAVEMENT
 - HIGH TENSION CABLE MEDIAN BARRIER
 - HIGH TENSION CABLE MEDIAN TERMINAL



TYLIN INTERNATIONAL	USER NAME	DESIGNED - JTP	REVISED - 10/18/2013	STATE OF ILLINOIS DEPARTMENT OF TRANSPORTATION	STUENKEL ROAD AT I-57 RIDGELAND AVENUE TO CENTRAL AVENUE MAINTENANCE OF TRAFFIC PLAN - I-57 STAGE 1	F.A.I. RTE.	SECTION	COUNTY	TOTAL SHEETS	SHEET NO.
	PROJECT SCALE	DRAWN - JTP	REVISED - 12/04/2013			57	99-IHB-RI	WILL	679	136
	DATE	CHECKED - JPM	REVISED	SCALE: 1" = 50'		SHEET 4 OF 6 SHEETS		STA. 1454+00 TO STA. 1468+00		CONTRACT NO. 60L69
	DATE	05/10/2013	REVISED			ILLINOIS FED. AID PROJECT				

\\N0026120\57_0_Suenkel\Drawings\Drawings\Change\NC.3_Stuenkel_MOT_57_4.dwg

3/26/09 PM