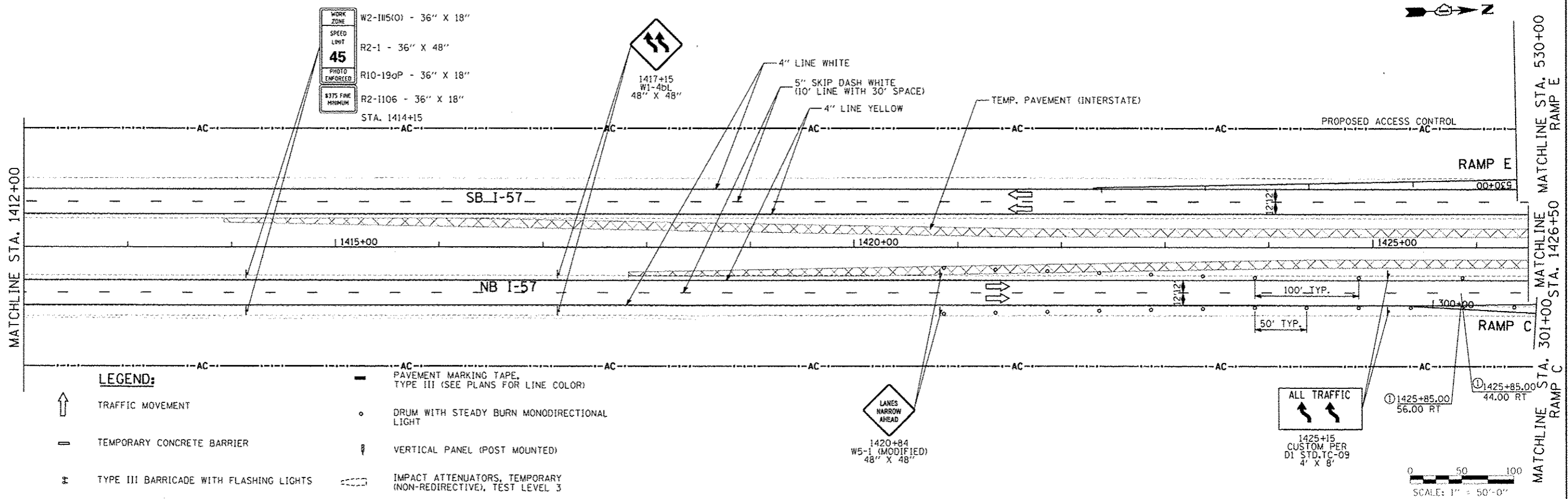
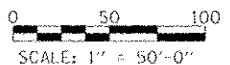


- ① BEGIN REVERSE CURVE OR WEAVE/ LANE WIDENING
- ② END REVERSE CURVE OR WEAVE/ LANE WIDENING
- ③ BEGIN REVERSE CURVE OR WEAVE/ LANE NARROWING
- ④ END REVERSE CURVE OR WEAVE/ LANE NARROWING
- ⑤ BEGIN GLARE SCREENS ON BARRIER
- ⑥ END GLARE SCREENS ON BARRIER

PLACE AT
STA. 1394+85
W20-I103(O)
D1 STD.TC-17
48" X 48"

1410+85
D1 STD.TC-17
48" X 48"

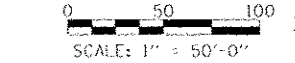


LEGEND:

- ↑ TRAFFIC MOVEMENT
- TEMPORARY CONCRETE BARRIER
- ⚡ TYPE III BARRICADE WITH FLASHING LIGHTS
- PAVEMENT MARKING TAPE, TYPE III (SEE PLANS FOR LINE COLOR)
- DRUM WITH STEADY BURN MONODIRECTIONAL LIGHT
- ↓ VERTICAL PANEL (POST MOUNTED)
- ▤ IMPACT ATTENUATORS, TEMPORARY (NON-REDIRECTIVE), TEST LEVEL 3

1420+84
W5-1 (MODIFIED)
48" X 48"

1425+15
CUSTOM PER
D1 STD.TC-09
4' X 8'



TYLIN INTERNATIONAL	USER NAME	DESIGNED - JTP	REVISED - 10/18/2013	STATE OF ILLINOIS DEPARTMENT OF TRANSPORTATION	STUENKEL ROAD AT I-57 RIDGELAND AVENUE TO CENTRAL AVENUE MAINTENANCE OF TRAFFIC PLAN - I-57 PRE-STAGE 1B	F.A. RTE.	SECTION	COUNTY	TOTAL SHEETS	SHEET NO.
	PROJECT SCALE	DRAWN - JTP	REVISIONS			57	99-1HB-R1	WILL	679	127
	PROJECT DATE	CHECKED - JPM	REVISIONS	SCALE: 1" = 50' SHEET 1 OF 6 SHEETS STA. 1402+00 TO STA. 1426+50		CONTRACT NO. 60L69		ILLINOIS FED. AID PROJECT		

D:\602612\1-57 @ Stuenkel\Road\NC 3\to-change\Pre-stage\3 Stuenkel MDI_b7151B-L.dgn

3/25/2013 3:05:05 PM