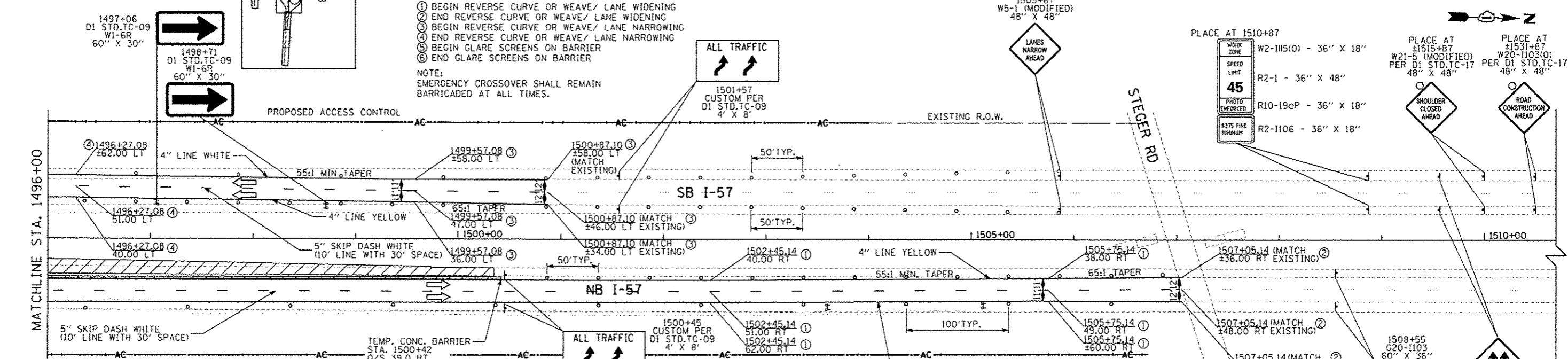


- 1 BEGIN REVERSE CURVE OR WEAVE/ LANE WIDENING
 - 2 END REVERSE CURVE OR WEAVE/ LANE WIDENING
 - 3 BEGIN REVERSE CURVE OR WEAVE/ LANE NARROWING
 - 4 END REVERSE CURVE OR WEAVE/ LANE NARROWING
 - 5 BEGIN GLARE SCREENS ON BARRIER
 - 6 END GLARE SCREENS ON BARRIER
- NOTE:
EMERGENCY CROSSOVER SHALL REMAIN BARRICADED AT ALL TIMES.



LEGEND:

- TRAFFIC MOVEMENT
- PAVEMENT MARKING TAPE, TYPE III (SEE PLANS FOR LINE COLOR)
- IMPACT ATTENUATORS, TEMPORARY (NON-REDIRECTIVE), TEST LEVEL 3
- TEMPORARY CONCRETE BARRIER
- DRUM WITH STEADY BURN MONODIRECTIONAL LIGHT
- WORK ZONE AREA
- TYPE III BARRICADE WITH FLASHING LIGHTS
- VERTICAL PANEL (POST MOUNTED)
- TEMPORARY PAVEMENT

TYLIN INTERNATIONAL	USER NAME	DESIGNED	REVISED	STATE OF ILLINOIS DEPARTMENT OF TRANSPORTATION	STUENKEL ROAD AT I-57 RIDGELAND AVENUE TO CENTRAL AVENUE MAINTENANCE OF TRAFFIC PLAN - I-57 PRE-STAGE 1A	F.A. RTE.	SECTION	COUNTY	TOTAL SHEETS	SHEET NO.
	PLNT SCALE	DRAWN	REVISED			57	99-1HB-R1	WILL	679	126
	PLNT DATE	CHECKED	REVISED			CONTRACT NO. 60L69				
	DATE	05/10/2013	REVISED			ILLINOIS FED. AID PROJECT				