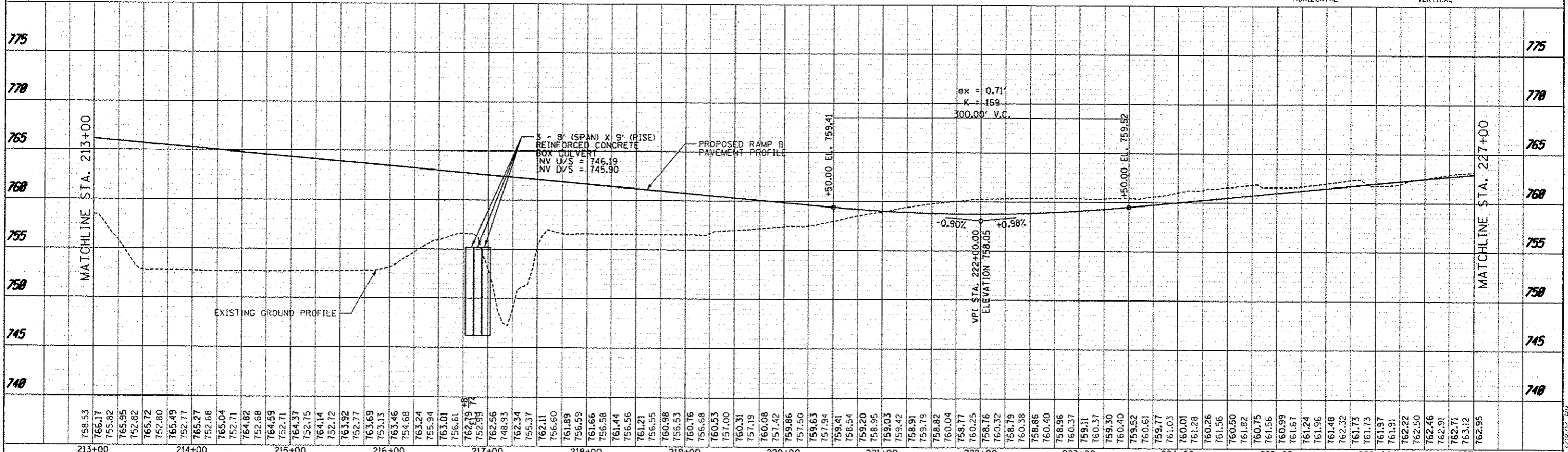
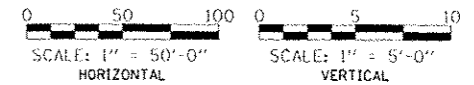
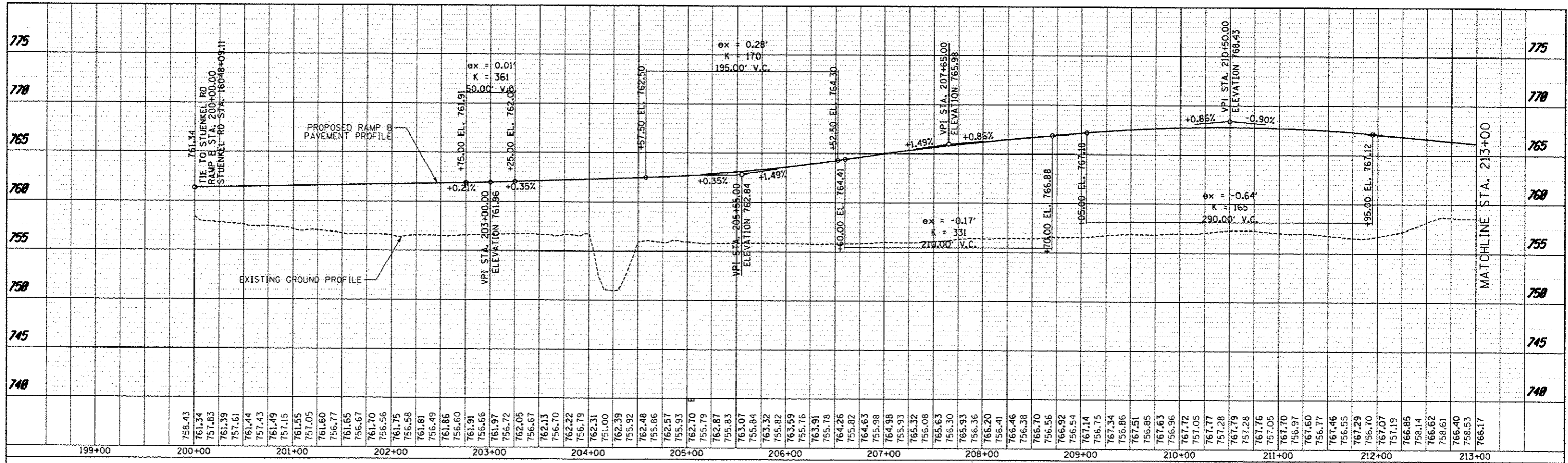


PLAN	DATE
BY	
NO. 304	
NO. 305	
NO. 306	
NO. 307	
NO. 308	
NO. 309	
NO. 310	
NO. 311	
NO. 312	
NO. 313	
NO. 314	
NO. 315	
NO. 316	
NO. 317	
NO. 318	
NO. 319	
NO. 320	
NO. 321	
NO. 322	
NO. 323	
NO. 324	
NO. 325	
NO. 326	
NO. 327	
NO. 328	
NO. 329	
NO. 330	
NO. 331	
NO. 332	
NO. 333	
NO. 334	
NO. 335	
NO. 336	
NO. 337	
NO. 338	
NO. 339	
NO. 340	
NO. 341	
NO. 342	
NO. 343	
NO. 344	
NO. 345	
NO. 346	
NO. 347	
NO. 348	
NO. 349	
NO. 350	
NO. 351	
NO. 352	
NO. 353	
NO. 354	
NO. 355	
NO. 356	
NO. 357	
NO. 358	
NO. 359	
NO. 360	
NO. 361	
NO. 362	
NO. 363	
NO. 364	
NO. 365	
NO. 366	
NO. 367	
NO. 368	
NO. 369	
NO. 370	
NO. 371	
NO. 372	
NO. 373	
NO. 374	
NO. 375	
NO. 376	
NO. 377	
NO. 378	
NO. 379	
NO. 380	
NO. 381	
NO. 382	
NO. 383	
NO. 384	
NO. 385	
NO. 386	
NO. 387	
NO. 388	
NO. 389	
NO. 390	
NO. 391	
NO. 392	
NO. 393	
NO. 394	
NO. 395	
NO. 396	
NO. 397	
NO. 398	
NO. 399	
NO. 400	

PROFILE	DATE
BY	
NO. 304	
NO. 305	
NO. 306	
NO. 307	
NO. 308	
NO. 309	
NO. 310	
NO. 311	
NO. 312	
NO. 313	
NO. 314	
NO. 315	
NO. 316	
NO. 317	
NO. 318	
NO. 319	
NO. 320	
NO. 321	
NO. 322	
NO. 323	
NO. 324	
NO. 325	
NO. 326	
NO. 327	
NO. 328	
NO. 329	
NO. 330	
NO. 331	
NO. 332	
NO. 333	
NO. 334	
NO. 335	
NO. 336	
NO. 337	
NO. 338	
NO. 339	
NO. 340	
NO. 341	
NO. 342	
NO. 343	
NO. 344	
NO. 345	
NO. 346	
NO. 347	
NO. 348	
NO. 349	
NO. 350	
NO. 351	
NO. 352	
NO. 353	
NO. 354	
NO. 355	
NO. 356	
NO. 357	
NO. 358	
NO. 359	
NO. 360	
NO. 361	
NO. 362	
NO. 363	
NO. 364	
NO. 365	
NO. 366	
NO. 367	
NO. 368	
NO. 369	
NO. 370	
NO. 371	
NO. 372	
NO. 373	
NO. 374	
NO. 375	
NO. 376	
NO. 377	
NO. 378	
NO. 379	
NO. 380	
NO. 381	
NO. 382	
NO. 383	
NO. 384	
NO. 385	
NO. 386	
NO. 387	
NO. 388	
NO. 389	
NO. 390	
NO. 391	
NO. 392	
NO. 393	
NO. 394	
NO. 395	
NO. 396	
NO. 397	
NO. 398	
NO. 399	
NO. 400	



758.53	766.17	755.82	765.95	752.82	765.72	765.49	765.27	765.04	752.71	764.82	764.59	752.71	764.37	764.14	752.72	763.92	752.77	763.69	753.13	763.46	754.68	763.24	755.94	763.01	756.61	762.79	752.89	762.56	748.93	762.34	755.37	762.11	756.60	761.89	756.59	761.66	761.44	756.56	761.21	756.55	760.98	756.53	760.76	756.68	760.53	760.00	760.31	757.19	760.08	757.42	759.86	757.50	759.63	757.94	759.41	758.54	759.20	758.95	759.03	759.42	758.91	759.79	758.82	760.04	758.77	760.25	758.76	760.32	758.79	760.38	758.86	760.40	758.96	760.37	759.11	760.37	760.40	759.52	760.61	759.77	761.03	760.01	761.28	760.26	761.56	760.99	761.67	761.24	761.96	761.48	762.32	761.73	761.73	761.97	761.91	762.22	762.50	762.46	762.91	762.71	763.12	762.95
213+00	214+00	215+00	216+00	217+00	218+00	219+00	220+00	221+00	222+00	223+00	224+00	225+00	226+00	227+00																																																																																								
TYLIN INTERNATIONAL		DESIGNED	JTP	REVISION	10/18/2013	STATE OF ILLINOIS DEPARTMENT OF TRANSPORTATION		STUENKEL ROAD AT I-57 RIDGELAND AVENUE TO CENTRAL AVENUE RAMP B PROPOSED PROFILE					F.A.I. RTE.	SECTION	COUNTY	TOTAL SHEETS	SHEET NO.																																																																																					
		DRAWN	JTP			SCALE: 1" = 50'					57	99-IHB-RI	WILL	679	89																																																																																							
		CHECKED	JPM			SHEET 17 OF 23 SHEETS STA. 200+00 TO STA. 227+00					CONTRACT NO. 60L69																																																																																											
		DATE	05/10/2013			ILLINOIS FED. AID PROJECT																																																																																																