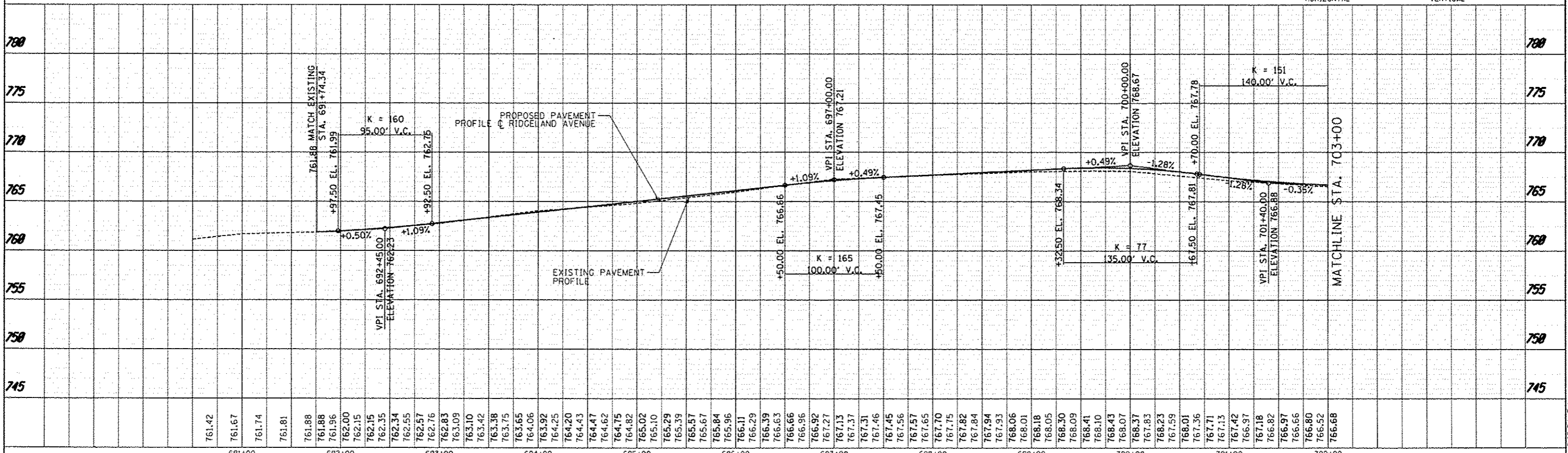
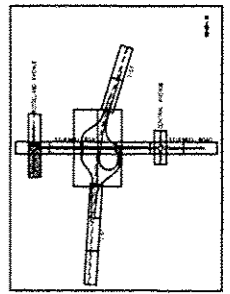
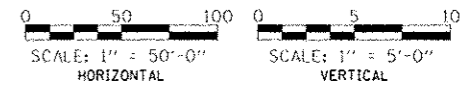


NOTES:

- 1. FOR DRIVEWAY DETAILS SEE SCHEDULE OF QUANTITIES
- 2. EXISTING R.O.W. LINEWORK HAS BEEN OMITTED FOR CLARITY
- 3. STATION, OFFSET, AND RADIUS CALLOUTS REFER TO EDGE OF PAVEMENT, UNLESS OTHERWISE NOTED.
- 4. STATIONING REFERS TO RIDGELAND AVE UNLESS NOTED OTHERWISE.



DATE	
BY	
PLAN	
NO. OF SHEETS	
NO. OF SHEETS CHECKED	
NO. OF SHEETS DESIGNED	
NO. OF SHEETS REVISED	

DATE	
BY	
PROFILE	
NO. OF SHEETS	
NO. OF SHEETS CHECKED	
NO. OF SHEETS DESIGNED	
NO. OF SHEETS REVISED	

TYL IN INTERNATIONAL	DESIGNED - JTP	REVISED - 06/21/2013	STATE OF ILLINOIS DEPARTMENT OF TRANSPORTATION	STUENKEL ROAD AT I-57 RIDGELAND AVENUE TO CENTRAL AVENUE RIDGELAND AVENUE PROPOSED PLAN AND PROFILE	SECTION	COUNTY	TOTAL SHEETS	SHEET NO.	
	DRAWN - JTP	REVISED - 10/18/2013			57	99-1HB-R1	WILL	679	79
	CHECKED - JPM	REVISED			CONTRACT NO. 60L69				
	DATE 05/10/2013	REVISED			ILLINOIS FED. AID PROJECT				
SCALE: 1" = 50'		SHEET 7 OF 23 SHEETS		STA. 691+74 TO STA. 703+00					