

RAMP A MATCHLINE STA. 127+00

126+44.64
168.97 RT

125+79.10
93.97 RT

123+96.63
98.91 RT

PROPOSED ACCESS CONTROL AC

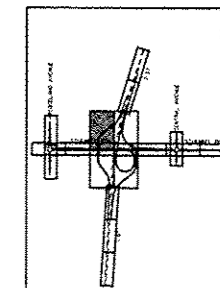
00+921

RAMP A

121+28.21
60.19 RT

LEGEND:

- | | | |
|---|---|-----------------------------|
| PAVEMENT REMOVAL | DRIVEWAY PAVEMENT REMOVAL | PAVED SHOULDER REMOVAL |
| AGGREGATE REMOVAL (PAID FOR AS EARTH EXCAVATION) | TRAFFIC SIGN REMOVAL | CCC&G REMOVAL |
| FIELD ENTRANCE REMOVAL (PAID FOR AS EARTH EXCAVATION) | MAILBOX REMOVAL & TEMPORARILY RELOCATED | CABLE BARRIER REMOVAL |
| DRAINAGE STRUCTURE REMOVAL | TREE REMOVAL | GUARDRAIL REMOVAL |
| | TREE REMOVAL (ACRE) | FENCE REMOVAL |
| | TREE REMOVAL (UNITS SPECIFIED) | STORM SEWER REMOVAL |
| | | PAVEMENT CRACKING & SEATING |



0 50 100
SCALE: 1" = 50'-0"

RAMP A

TREE REMOVAL (TYP)

EXISTING R.O.W.

SEE SHEET 12 FOR I-57
REMOVAL DETAILS

MATCHLINE STA. 114+00

TYLIN INTERNATIONAL	USER NAME	DESIGNED - JTP	REVISED - 10/18/2013
	PLT SCALE	DRAWN - JTP	REVISED -
	PLT DATE	CHECKED - JPM	REVISED -
		DATE - 05/10/2013	REVISED -

**STATE OF ILLINOIS
DEPARTMENT OF TRANSPORTATION**

**STUENKEL ROAD AT I-57 RIDGELAND AVENUE TO CENTRAL AVENUE
RAMP A REMOVAL PLAN**

F.A.J. RTE. 57	SECTION 99-14B-R1	COUNTY WILL	TOTAL SHEETS 679	SHEET NO. 69
CONTRACT NO. 60L69			ILLINOIS FED. AID PROJECT	

SCALE: 1" = 50' SHEET 11 OF 14 SHEETS STA. 114+00 TO STA. 127+00