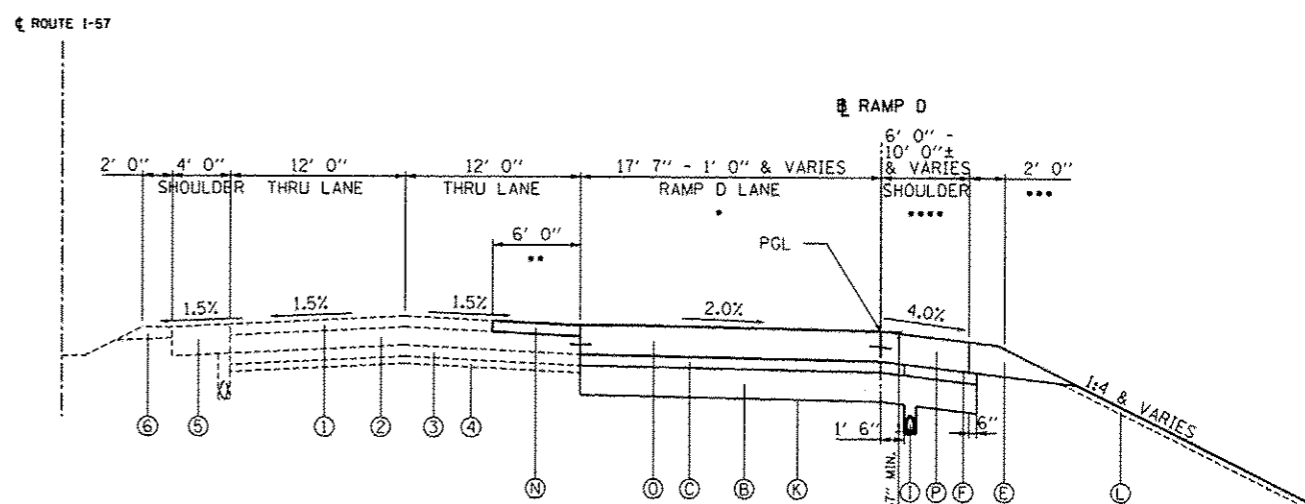


RAMP D  
STA. 400+00.00 TO STA. 425+57.54



RAMP D  
STA. 430+54.88 TO STA. 441+14.00

- 16' 0" FROM STA. 430+54.88 TO 432+49.96. TAPERS FROM 17' 7" TO 1' 0" FROM STA. 432+49.96 TO STA. 440+98.99.
- NO RESURFACING FROM STA. 434+47.83 TO STA. 435+11.16. SEE TYPICAL SECTION FOR CULVERT UNDER I-57, RAMPS B AND D.
- AGGREGATE SHOULDER ENDS AT STA. 439+65.43.
- 6' 0" FROM STA. 430+54.88 TO STA. 439+65.43. TAPERS FROM 6' 0" TO 8' 6" FROM STA. 439+65.43 TO STA. 440+98.99. 10' 0"± FROM STA. 440+98.99 TO STA. 441+14.00.

NOTES:

1. SHOULDER WIDTH:  
STA. 405+27.58 TO STA. 425+57.50 - 4'-0"  
STA. 425+57.50 TO STA. 429+30.02 - ±13'-2" TO 1'-0"
2. LANE WIDTH:  
STA. 400+00.00 TO STA. 402+00.36 - 0'-0" TO 12'-0"  
STA. 402+00.36 TO STA. 403+50.31 - 12'-0"  
STA. 403+50.31 TO STA. 404+22.36 - 12'-0" TO 18'-0"  
STA. 404+22.36 TO STA. 407+00.00 - 18'-0"  
STA. 407+00.00 TO STA. 407+82.28 - 18'-0" TO 16'-0"  
STA. 407+82.28 TO STA. 432+49.96 - 16'-0"  
STA. 432+49.96 TO STA. 440+98.99 - ±17'-6" TO 1'-0"
3. SHOULDER WIDTH:  
STA. 400+00.00 TO STA. 439+65.43 - 6'-0"  
STA. 439+65.43 TO STA. 441+14.00 - 6'-0" TO ±9'-6"
4. SHOULDER CROSS SLOPE:  
STA. 405+27.58 TO STA. 407+33.78 - 2.00%  
STA. 407+33.78 TO STA. 407+82.28 - 2.00% TO 4.00%  
STA. 407+82.28 TO STA. 409+84.19 - 4.00%  
STA. 409+84.19 TO STA. 410+35.79 - 4.00% TO 2.00%  
STA. 410+35.79 TO STA. 423+04.01 - 2.00%  
STA. 423+04.01 TO STA. 423+68.01 - 2.00% TO 4.00%  
STA. 423+68.01 TO STA. 425+57.54 - 4.00%
5. PAVEMENT CROSS SLOPE:  
STA. 400+00.00 TO STA. 403+13.91 - 2.50%  
STA. 403+13.91 TO STA. 403+86.71 - 2.50% TO 6.00%  
STA. 403+86.71 TO STA. 407+33.78 - 6.00%  
STA. 407+33.78 TO STA. 408+30.78 - 6.00% TO 2.00%  
STA. 408+30.78 TO STA. 409+32.59 - 2.00%  
STA. 409+32.59 TO STA. 410+35.79 - 2.00% TO 6.00%  
STA. 410+35.79 TO STA. 423+04.01 - 6.00%  
STA. 423+04.01 TO STA. 424+32.01 - 6.00% TO 2.00%  
STA. 424+32.01 TO STA. 425+57.54 - 2.00%
6. SHOULDER CROSS SLOPE:  
STA. 400+00.00 TO STA. 403+45.11 - 4.00%  
STA. 403+45.11 TO STA. 403+86.71 - 4.00% TO 6.00%  
STA. 403+86.71 TO STA. 407+33.78 - 6.00%  
STA. 407+33.78 TO STA. 407+82.28 - 6.00% TO 4.00%  
STA. 407+82.28 TO STA. 409+84.19 - 4.00%  
STA. 409+84.19 TO STA. 410+35.79 - 4.00% TO 6.00%  
STA. 410+35.79 TO STA. 423+04.01 - 6.00%  
STA. 423+04.01 TO STA. 423+68.01 - 6.00% TO 4.00%  
STA. 423+68.01 TO STA. 425+57.54 - 4.00%

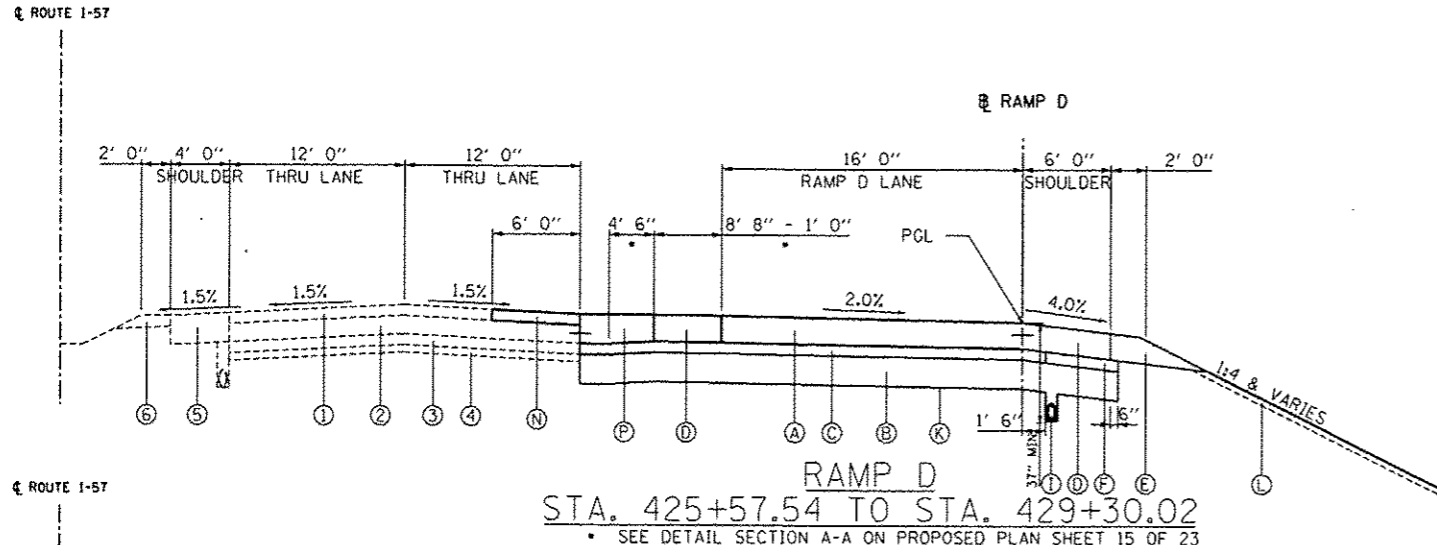
FOR DETAILS OF RAMP D OVER CULVERT  
SEE PROPOSED TYPICAL SECTION SHEET 15 OF 16

EXISTING LEGEND:

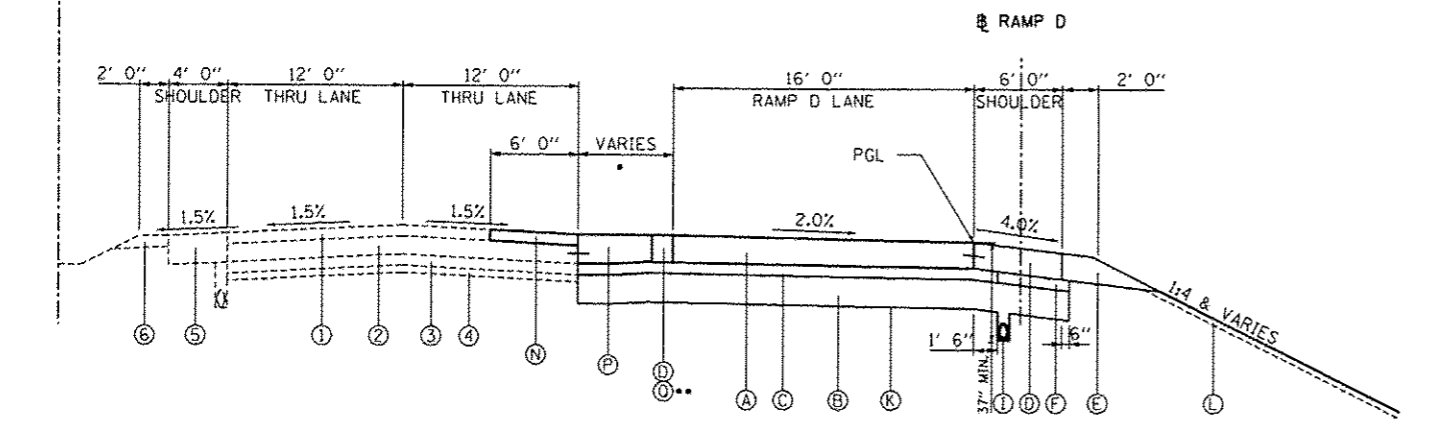
- ① EXISTING HMA PAVEMENT, 4"± & VARIES
- ② EXISTING CRC PAVEMENT, 8"± & VARIES
- ③ EXISTING STABILIZED SUBBASE, 4"± & VARIES
- ④ EXISTING AGGREGATE SUBGRADE, VARIES
- ⑤ EXISTING PAVED SHOULDER, 12± & VARIES
- ⑥ EXISTING AGGREGATE SHOULDER
- ⑦ EXISTING CABLE GUARDRAIL

GENERAL NOTES:

SHOULDER RUMBLE STRIPS 8", SHALL BE PLACED ACCORDING TO STANDARD 642006 ON RAMPS  
BARS SHOWN ARE DEFORMED TIE BARS



RAMP D  
STA. 425+57.54 TO STA. 429+30.02  
• SEE DETAIL SECTION A-A ON PROPOSED PLAN SHEET 15 OF 23



RAMP D  
STA. 429+30.02 TO STA. 430+54.88  
• SEE DETAIL SECTION C-C ON PROPOSED PLAN SHEET 14 OF 23

LEGEND:

- Ⓐ PROPOSED PORTLAND CEMENT CONCRETE PAVEMENT, 10¾"
- Ⓑ PROPOSED AGGREGATE SUBGRADE IMPROVEMENT, 12"
- Ⓒ PROPOSED STABILIZED SUBBASE- HOT-MIX ASPHALT, 4½"
- Ⓓ PROPOSED PORTLAND CEMENT CONCRETE SHOULDERS, 10¾"
- Ⓔ PROPOSED AGGREGATE SHOULDER, TYPE B (10¾"-STUENKEL/RAMPS)
- Ⓕ PROPOSED SUBBASE GRANULAR MATERIAL, TYPE C
- Ⓖ PROPOSED COMBINATION CONCRETE CURB AND GUTTER, TYPE B-6.24
- Ⓗ PROPOSED COMBINATION CONCRETE CURB AND GUTTER, TYPE B-6.12
- Ⓘ UNDERDRAIN, 6"
- Ⓝ SB MEDIAN OR CONCRETE MEDIAN SURFACE, 4"
- Ⓚ GEOTECHNICAL FABRIC FOR GROUND STABILIZATION
- Ⓛ TOPSOIL E&P 12" AND SEEDING (SEE LANDSCAPING PLANS)
- Ⓜ PROPOSED PORTLAND CEMENT CONCRETE PAVEMENT, 9¾" (RIDGELAND, CENTRAL)
- Ⓝ PROPOSED POLYMERIZED HOT-MIX ASPHALT SURF. COURSE, MIX "F", N90, 1 3/4"
- Ⓞ PROPOSED CONTINUOUSLY REINFORCED CONCRETE PAVEMENT, 12"
- Ⓟ PROPOSED PORTLAND CEMENT CONCRETE SHOULDERS, 12"
- Ⓠ PROPOSED PORTLAND CEMENT CONCRETE PAVEMENT, 12"
- Ⓡ STEEL PLATE BEAM GUARDRAIL, TYPE A

<b>TYLIN INTERNATIONAL</b> USER NAME: _____ PLOT SCALE: _____ PLOT DATE: _____	DESIGNED - DPS DRAWN - DPS CHECKED - JF DATE 05/10/2013	REVISED - 06/21/2013 REVISED - 10/18/2013 REVISED - _____ REVISED - _____	<b>STATE OF ILLINOIS DEPARTMENT OF TRANSPORTATION</b>		<b>STUENKEL ROAD AT I-57 RIDGELAND AVENUE TO CENTRAL AVENUE PROPOSED TYPICAL SECTIONS - RAMP D</b>		F.A.I. R.T.E. 57	SECTION 99-118-R1	COUNTY WILL	TOTAL SHEETS 679	SHEET NO. 48	CONTRACT NO. 60L69
	SCALE: N.T.S. SHEET 10 OF 17 SHEETS STA. TO STA.			ILLINOIS FED. AID PROJECT								
	P:\2012\121-57 @ Stuenkel\Road\121-310\exchange\121-310\Stuenkel_TypSec10B.dgn											