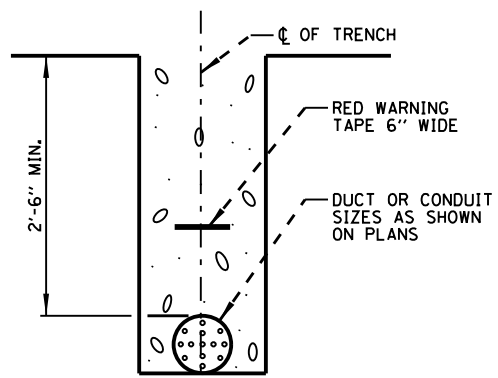


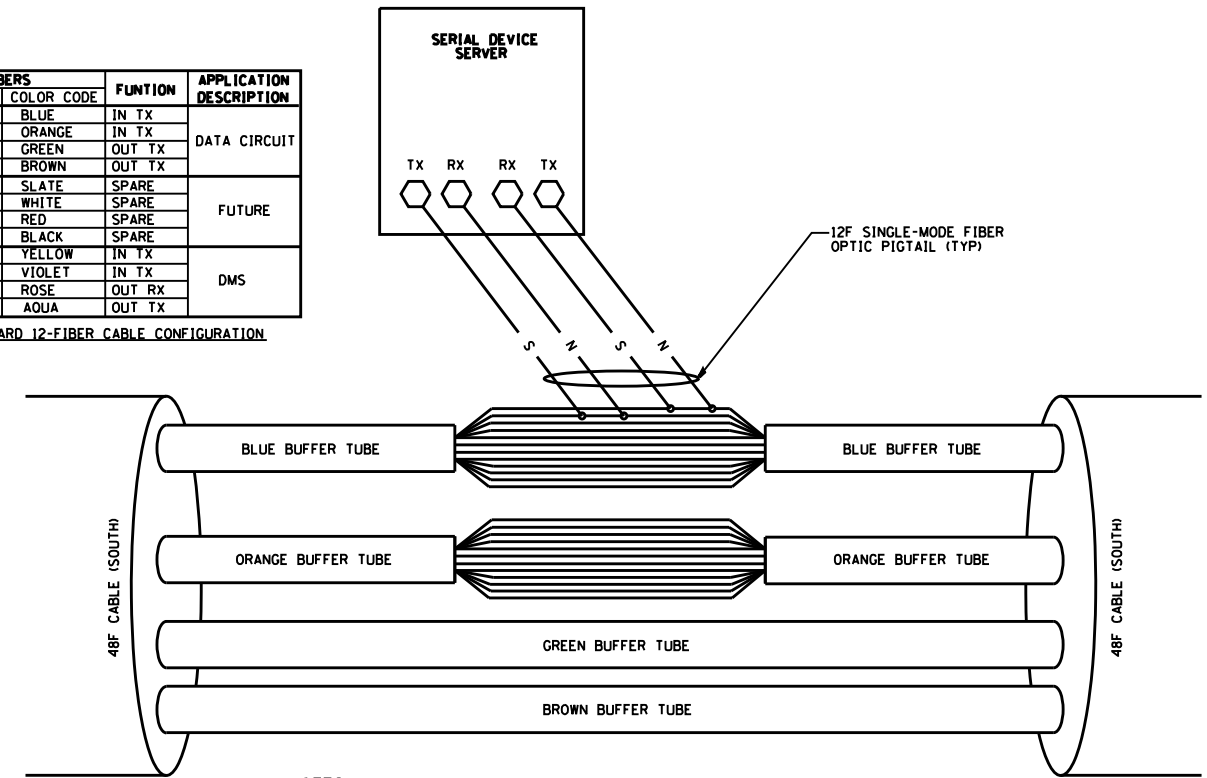
**GROUND WELL DETAIL**  
N.T.S.



**CONDUIT IN TRENCH DETAIL**  
N.T.S.

FIBER NO.	COLOR CODE	FUNCTION	APPLICATION DESCRIPTION
1	BLUE	IN TX	DATA CIRCUIT
2	ORANGE	IN TX	
3	GREEN	OUT TX	
4	BROWN	OUT TX	
5	SLATE	SPARE	FUTURE
6	WHITE	SPARE	
7	RED	SPARE	
8	BLACK	SPARE	DMS
9	YELLOW	IN TX	
10	VIOLET	IN TX	
11	ROSE	OUT RX	
12	AQUA	OUT TX	

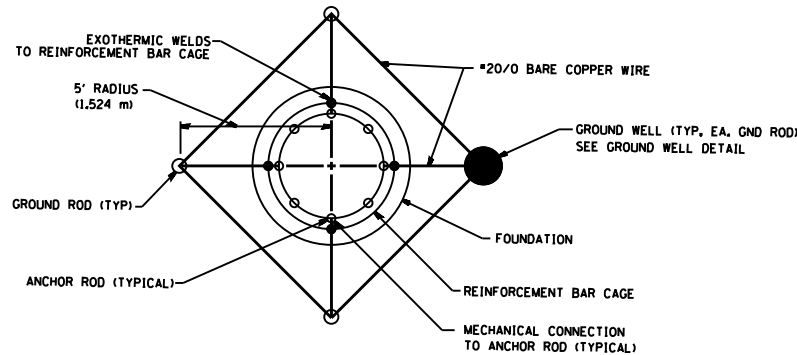
STANDARD 12-FIBER CABLE CONFIGURATION



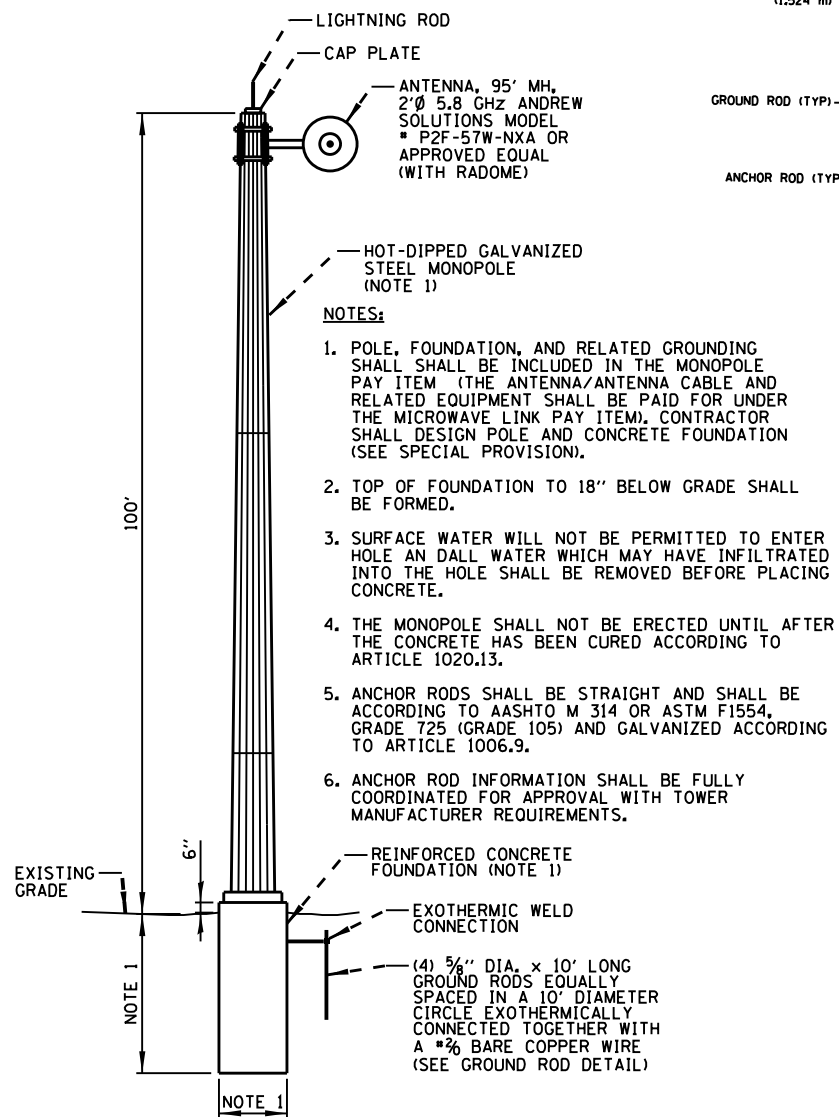
NOTES:

- CONTRACTOR SHALL VERIFY AND COORDINATE FIBERS TO BE SPLICED.

**FIBER OPTIC SPLICING DETAIL**  
N.T.S.



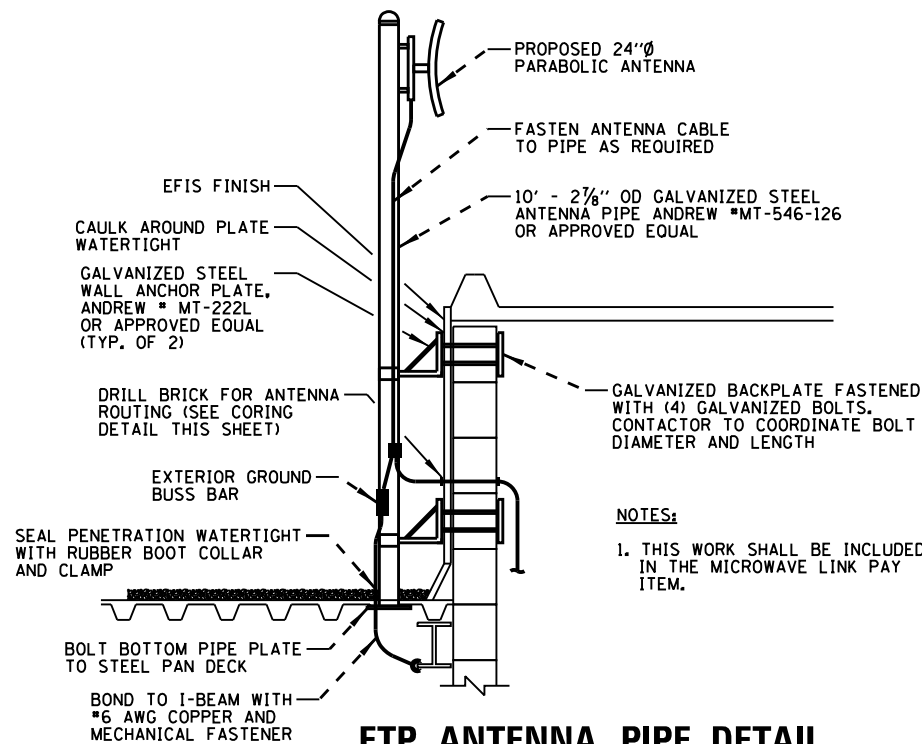
**GROUND ROD DETAIL**  
N.T.S.



**MONOPOLE DETAIL**  
N.T.S.

NOTES:

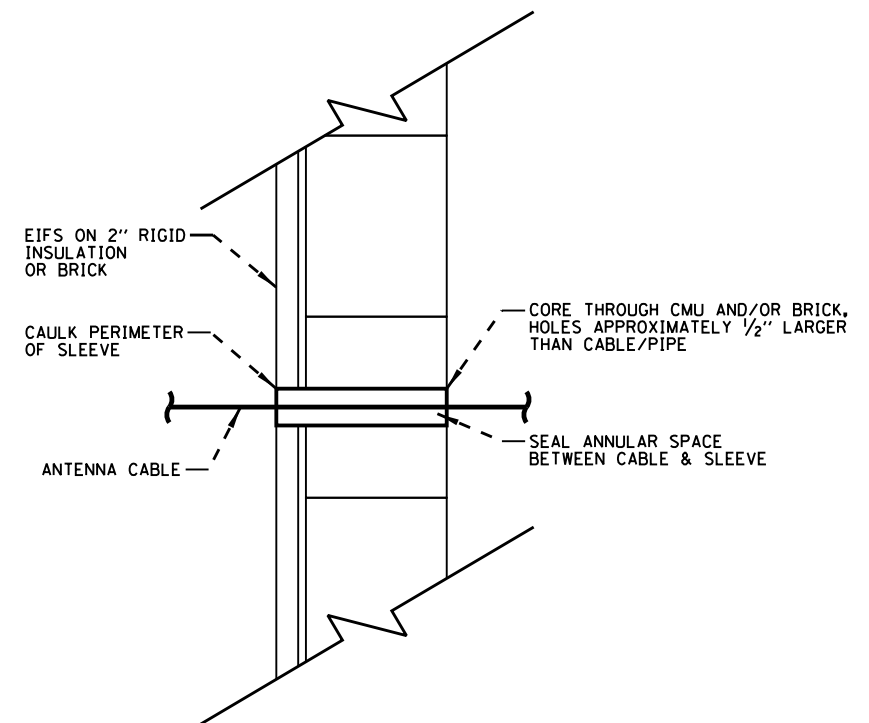
- POLE, FOUNDATION, AND RELATED GROUNDING SHALL BE INCLUDED IN THE MONOPOLE PAY ITEM (THE ANTENNA/ANTENNA CABLE AND RELATED EQUIPMENT SHALL BE PAID FOR UNDER THE MICROWAVE LINK PAY ITEM). CONTRACTOR SHALL DESIGN POLE AND CONCRETE FOUNDATION (SEE SPECIAL PROVISION).
- TOP OF FOUNDATION TO 18" BELOW GRADE SHALL BE FORMED.
- SURFACE WATER WILL NOT BE PERMITTED TO ENTER HOLE AND ALL WATER WHICH MAY HAVE INFILTRATED INTO THE HOLE SHALL BE REMOVED BEFORE PLACING CONCRETE.
- THE MONOPOLE SHALL NOT BE ERECTED UNTIL AFTER THE CONCRETE HAS BEEN CURED ACCORDING TO ARTICLE 1020.13.
- ANCHOR RODS SHALL BE STRAIGHT AND SHALL BE ACCORDING TO AASHTO M 314 OR ASTM F1554, GRADE 725 (GRADE 105) AND GALVANIZED ACCORDING TO ARTICLE 1006.9.
- ANCHOR ROD INFORMATION SHALL BE FULLY COORDINATED FOR APPROVAL WITH TOWER MANUFACTURER REQUIREMENTS.



**ETP ANTENNA PIPE DETAIL**  
N.T.S.

NOTES:

- THIS WORK SHALL BE INCLUDED IN THE MICROWAVE LINK PAY ITEM.



**CORING DETAIL**  
N.T.S.

FILE NAME: <b>01FILES</b>	USER NAME: <b>0USERS</b>	DESIGNED: <b>R.T.</b>	REVISED: -	<b>STATE OF ILLINOIS DEPARTMENT OF TRANSPORTATION</b>	<b>ITS CENTER-TO-CENTER INTEGRATION PROJECT</b>			F.A. RTE.	SECTION	COUNTY	TOTAL SHEETS	SHEET NO.	
		DRAWN: <b>G.M.</b>	REVISED: -		<b>DETAILS (1 OF 3)</b>				2009-0871	COOK	25	22	
		CHECKED: <b>R.T.</b>	REVISED: -										
		DATE: <b>12/11/2013</b>	REVISED: -					SCALE: <b>N.T.S.</b>	SHEET NO. <b>1</b> OF <b>3</b> SHEETS	STA. <b>1</b> TO STA. <b>1</b>	CONTRACT NO. <b>60134</b>		

ILLINOIS FED. AID PROJECT