

DESIGNED BY
CHECKED BY
ORIGINAL SURVEY
FINAL SURVEY

ISSUE	REVISION LETTER	REVISED BY	DATE

Cochran & Wilken, Inc.
CONSULTING ENGINEERS
1201 S. Sixth St., Springfield, IL 62703

SCALE: AS SHOWN

LOCK GATE SEAL AND LUBE SYSTEM

FILE NO.
CLASSIFICATION
NO.
SHEET NO. 14 OF 19 SHEETS

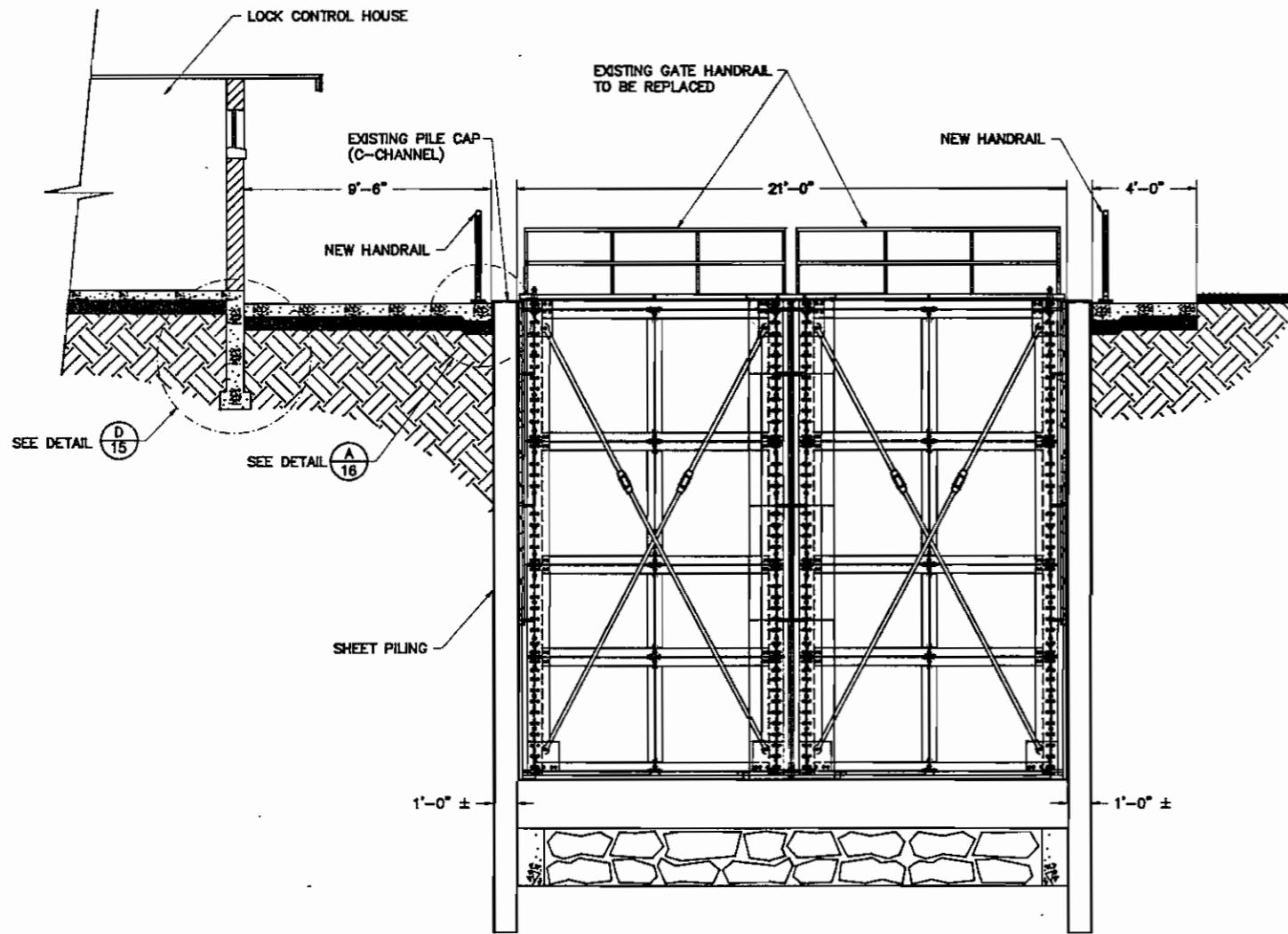
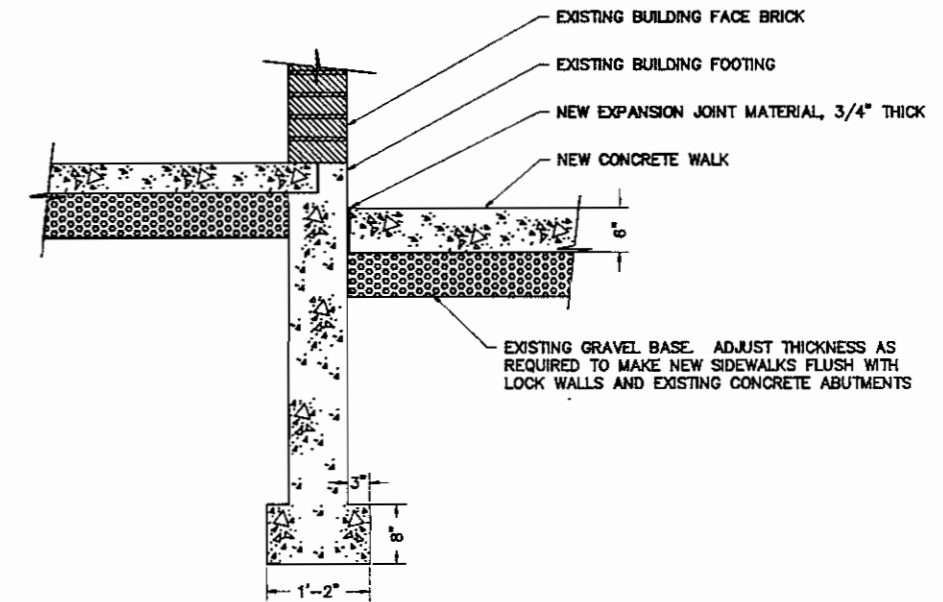


TABLE OF PIPE SIZES			
NOMINAL DIAMETER	INSIDE DIAMETER	OUTSIDE DIAMETER	WEIGHT PER FOOT, lb.
1" STD	1.049	1.315	1.679
2" STD	2.067	2.375	3.653
2" X-STRONG	1.939	2.375	5.022
2 1/2" STD	2.469	2.875	5.793
3" X-STRONG	2.900	3.500	10.25
5" X-STRONG	4.813	5.563	20.78

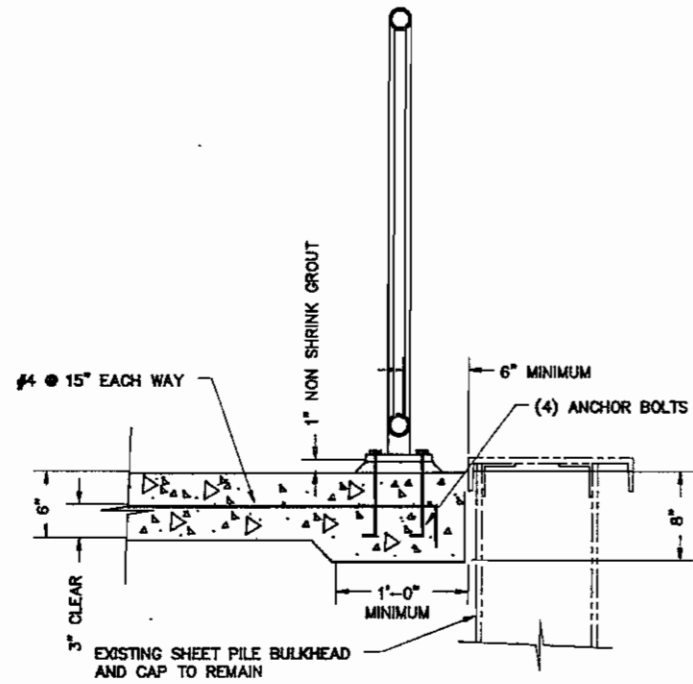


DETAIL
SCALE 1" = 1'-0" (D 15)

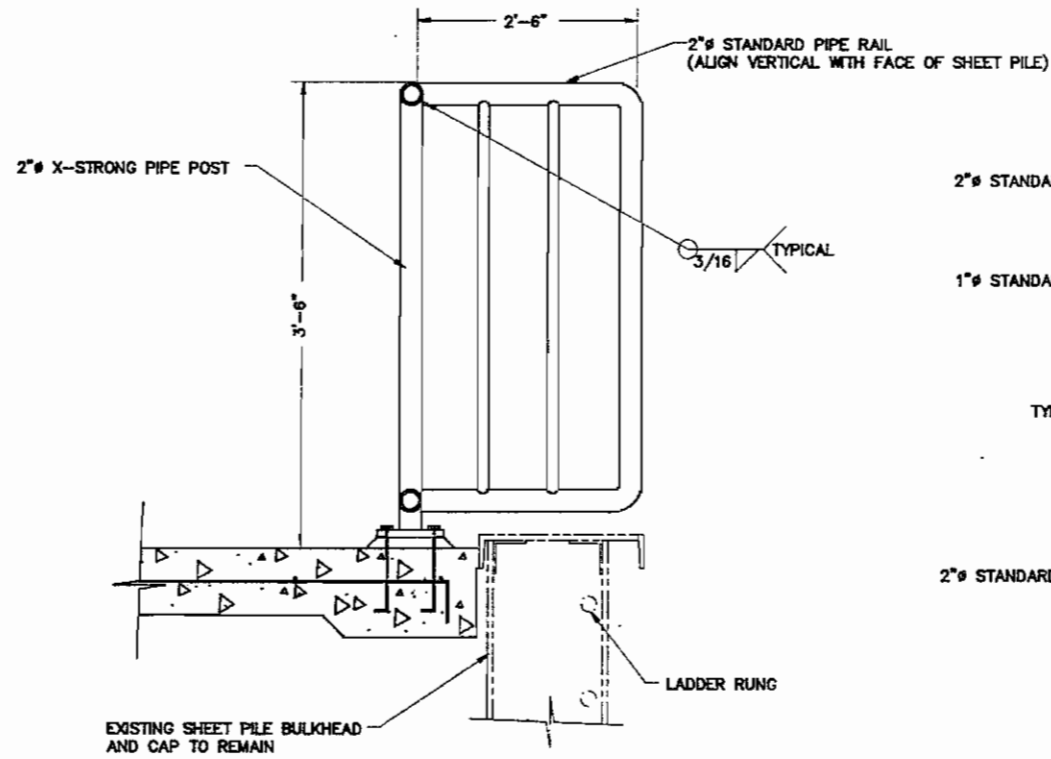
SECTION
SCALE 1" = 3'-0" (A 15)

DESIGNED BY _____
CHECKED BY _____
ORIGINAL SURVEY _____
FINAL SURVEY _____

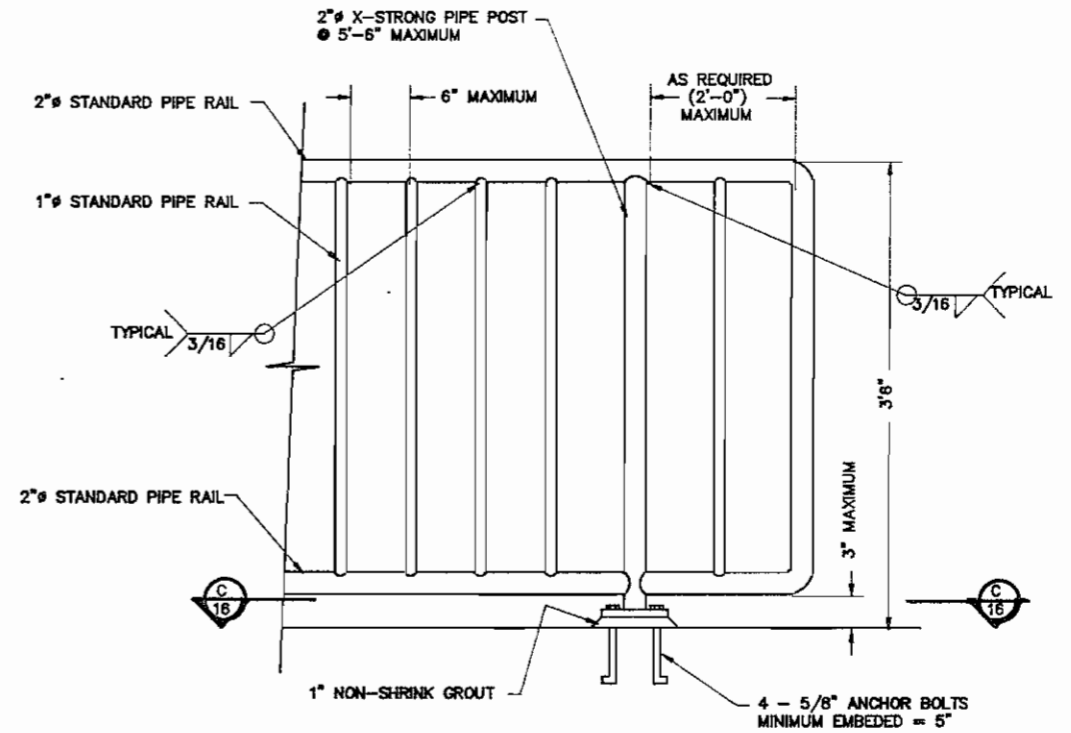
ISSUE	REVISION LETTER	REVISED BY	DATE



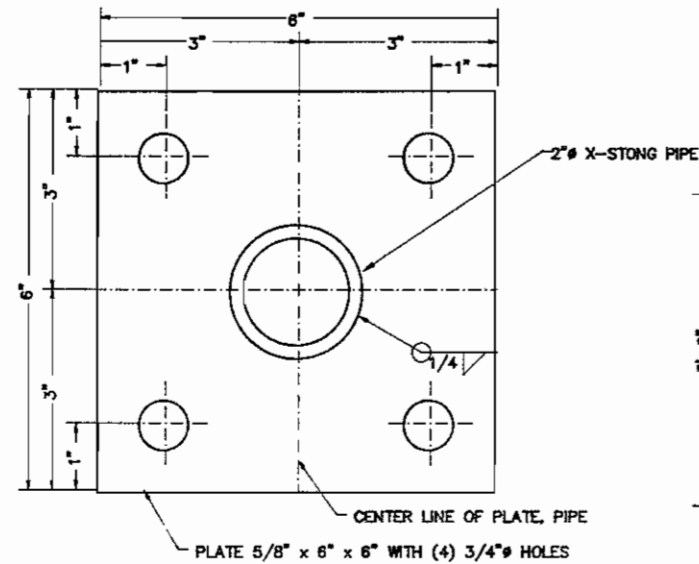
DETAIL A
SCALE 1 1/2" = 1'-0"



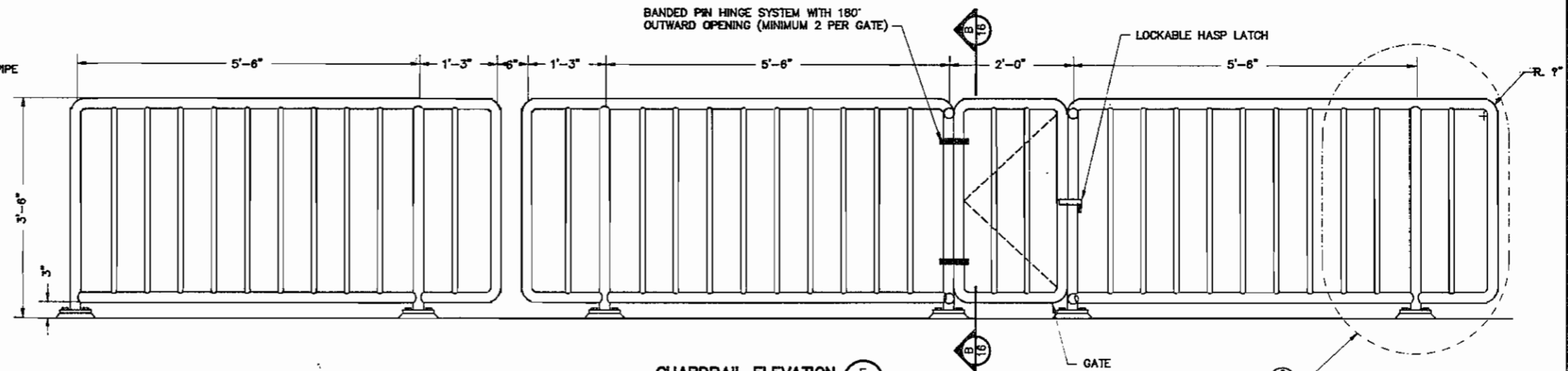
SECTION B
SCALE 1 1/2" = 1'-0"



GUARDRAIL ELEVATION C
SCALE 1 1/2" = 1'-0"



SECTION D
SCALE 3/4" = 1"

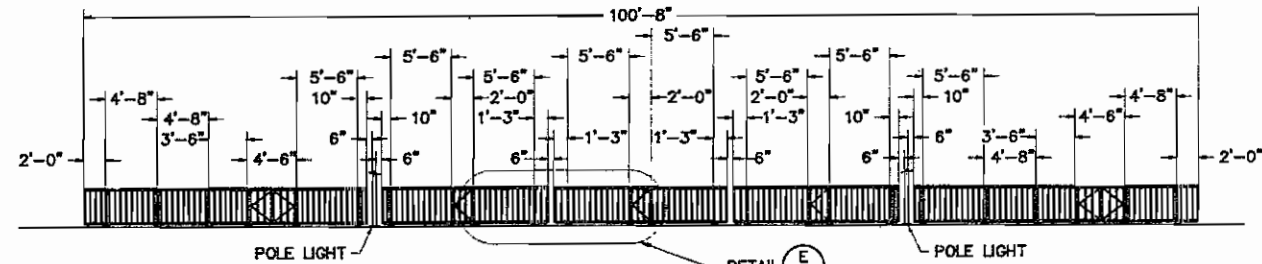


GUARDRAIL ELEVATION E
SCALE 1" = 1'-0"

SEE DETAIL C-16

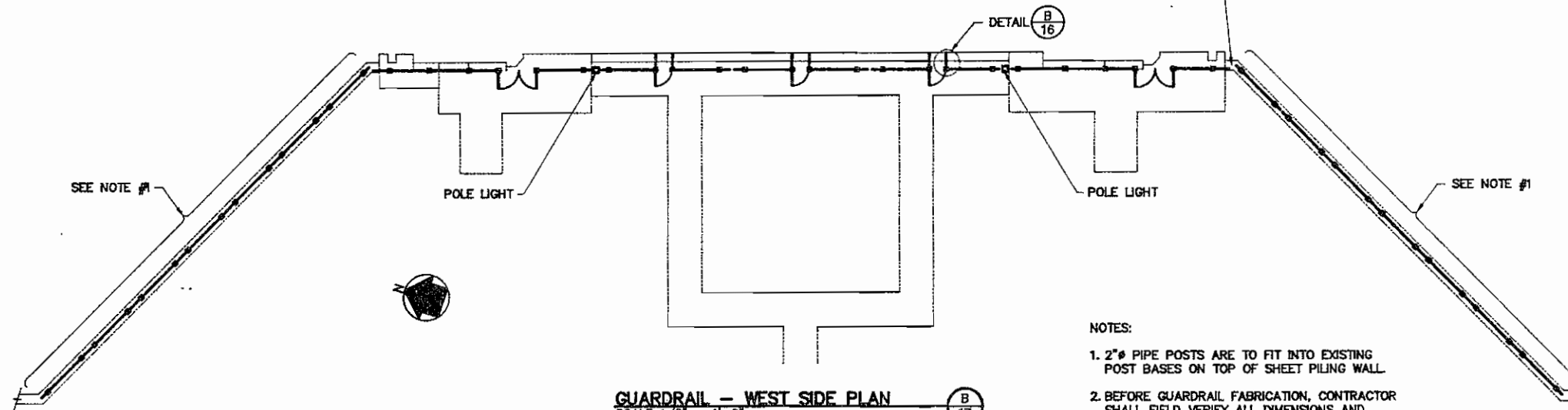
DESIGNED BY _____
CHECKED BY _____
ORIGINAL SURVEY _____
FINAL SURVEY _____

ISSUE	REVISION LETTER	REVISED BY	DATE



GUARDRAIL - WEST SIDE ELEVATION
SCALE 1/8" = 1'-0"

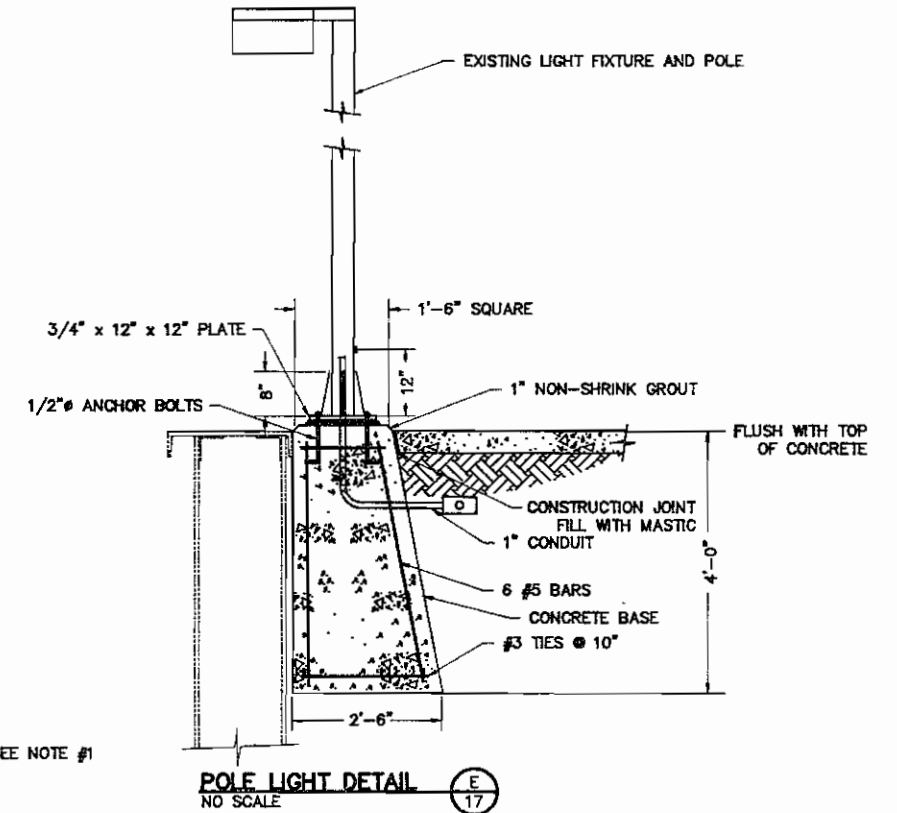
6" MAXIMUM OPENING AT CORNER (TYPICAL)



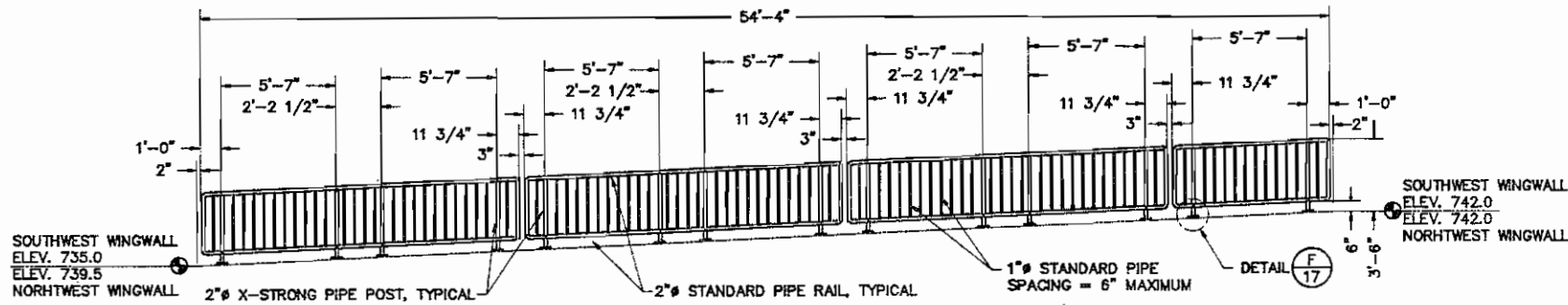
GUARDRAIL - WEST SIDE PLAN
SCALE 1/8" = 1'-0"

NOTES:

- 2" PIPE POSTS ARE TO FIT INTO EXISTING POST BASES ON TOP OF SHEET PILING WALL.
- BEFORE GUARDRAIL FABRICATION, CONTRACTOR SHALL FIELD VERIFY ALL DIMENSIONS AND ELEVATIONS.
- FOR GUARDRAIL CONSTRUCTION DETAILS, SEE **C 16**.
- ONLY THE WEST SIDE OF LOCK RAILING IS SHOWN IN PLAN AND ELEVATION VIEWS ON THIS SHEET. EAST SIDE IS A MIRROR IMAGE OF WEST SIDE.

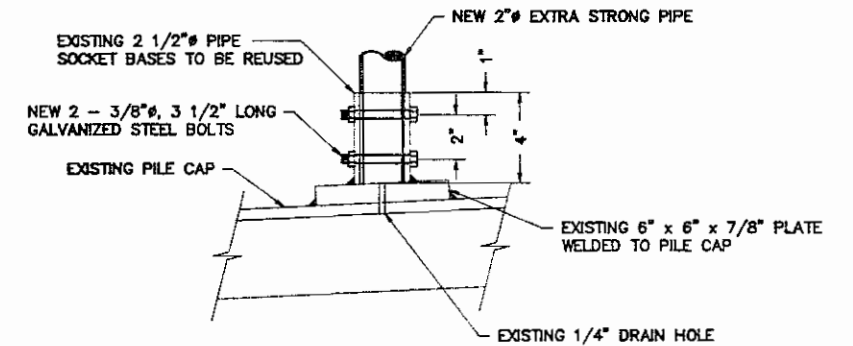


POLE LIGHT DETAIL
NO SCALE



GUARDRAIL NORTHWEST WINGWALL SOUTHWEST ELEVATION
SCALE 1/4" = 1'-0"

NOTE: SOUTHWEST WINGWALL ELEVATION IS NOT SHOWN IN ELEVATION BUT SAME DIMENSIONS APPLY.

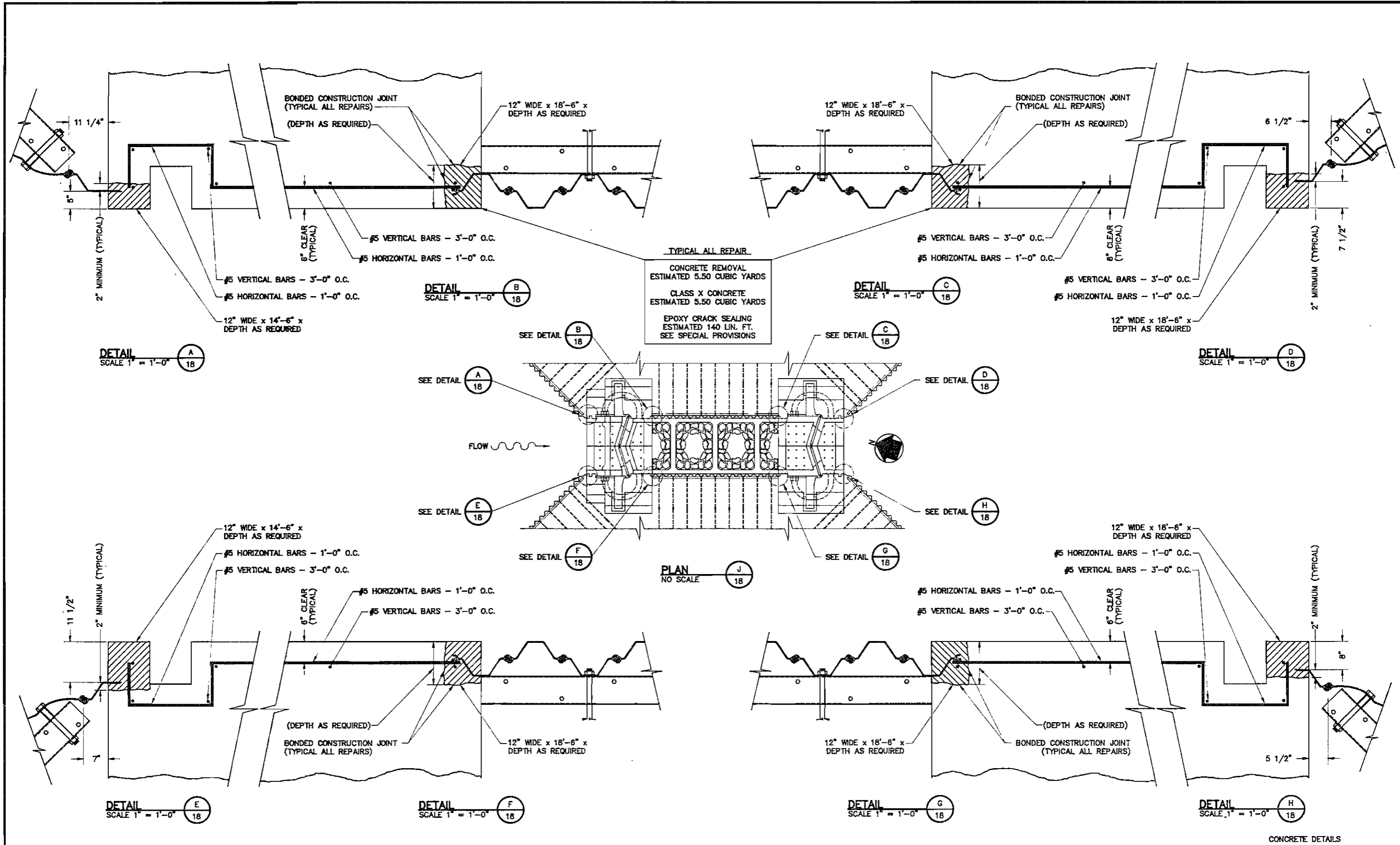


ELEVATION OF BASE
SCALE 3" = 1'-0"

HANDRAILING DETAILS

DESIGNED BY
CHECKED BY
DATE
BOOK
ORIGINAL SURVEY
FINAL SURVEY

ISSUE	REVISION LETTER	REVISED BY	DATE



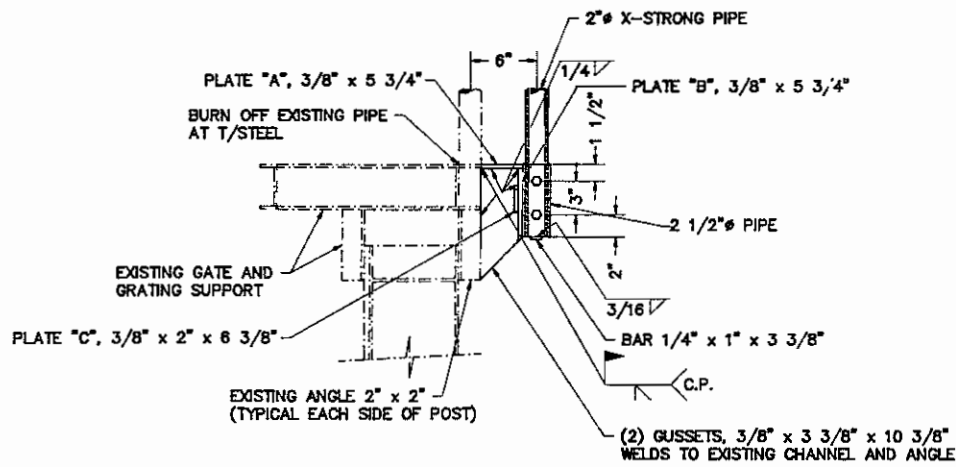
DESIGNED BY _____
 CHECKED BY _____
 ORIGINAL SURVEY _____
 FINAL SURVEY _____

REVISIONS	ISSUE	REVISION LETTER	REVISED BY	DATE

Cochran & Wilken, Inc.
 CONSULTING ENGINEERS
 1201 S. Sixth St., Springfield, IL 62732

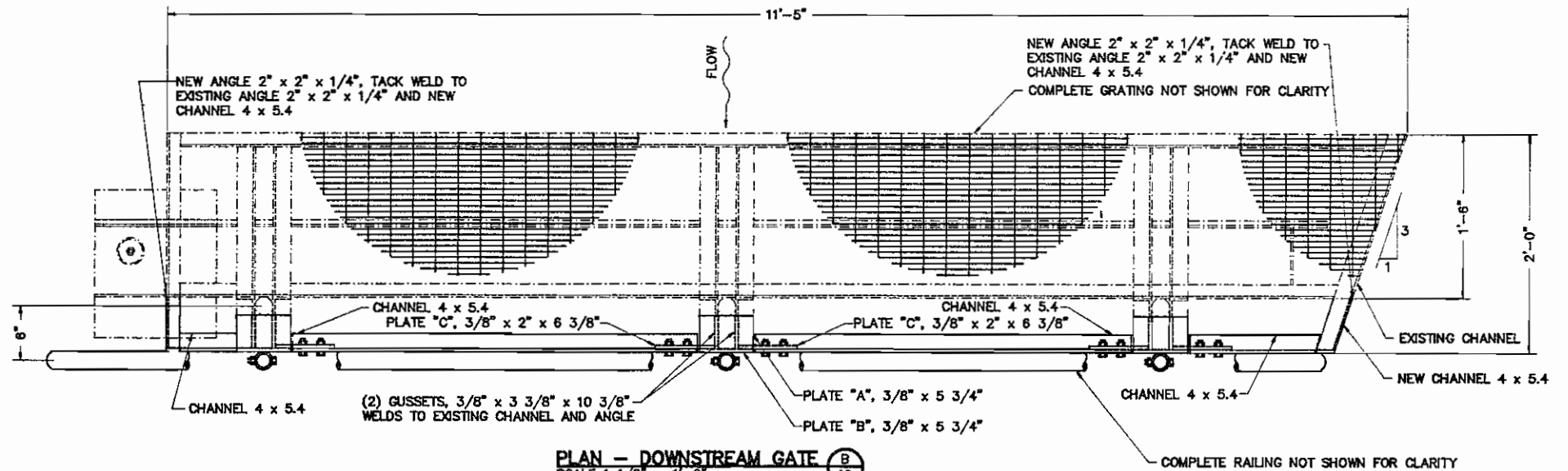
SCALE: AS SHOWN

FILE NO. _____
 CLASSIFICATION NO. _____
 SHEET NO. 18 OF 19 SHEETS

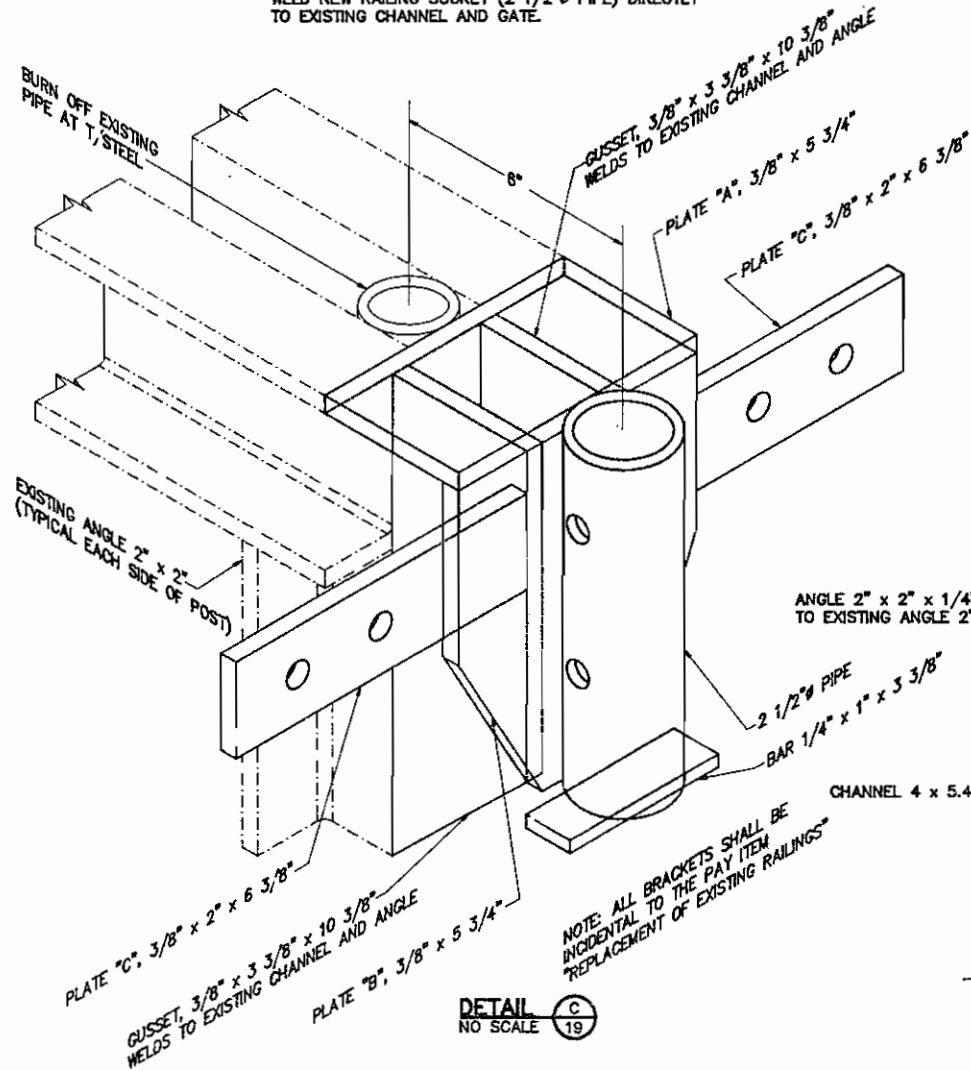


SECTION - DOWNSTREAM GATE (A)
SCALE 1 1/2" = 1'-0"

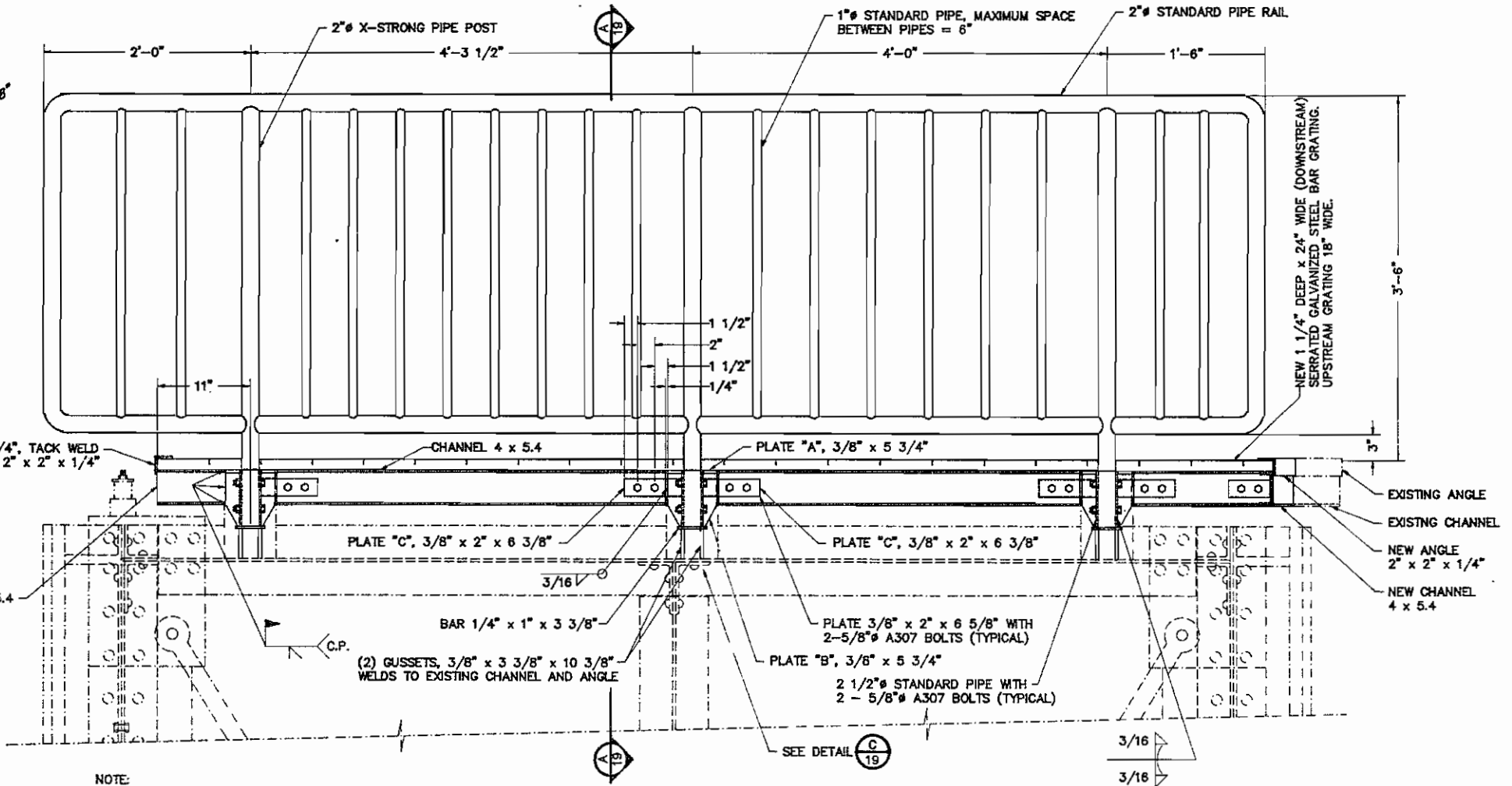
UPSTREAM GATE WALKWAY WILL REMAIN 18" WIDE.
WELD NEW RAILING SOCKET (2 1/2" PIPE) DIRECTLY
TO EXISTING CHANNEL AND GATE.



PLAN - DOWNSTREAM GATE (B)
SCALE 1 1/2" = 1'-0"



DETAIL (C)
NO SCALE



ELEVATION - DOWNSTREAM GATE (D)
SCALE 1 1/2" = 1'-0"

NOTE:
WALKWAY SHOWN IS FOR ONE MITER LEAF,
TWO WALKWAYS REQUIRED. ONE LEFT AND
ONE RIGHT, BOTH DOWNSTREAM AND UPSTREAM
GATES.

DESIGNED BY _____
CHECKED BY _____
ORIGINAL SURVEY _____
FINAL SURVEY _____

ISSUE	REVISION LETTER	REVISED BY	DATE

INDEX

PLAN, SUMMARY OF QUANTITIES & GENERAL NOTES _____ 2
CROSS SECTIONS _____ 3

STATE OF ILLINOIS
DEPARTMENT OF TRANSPORTATION
DIVISION OF WATER RESOURCES

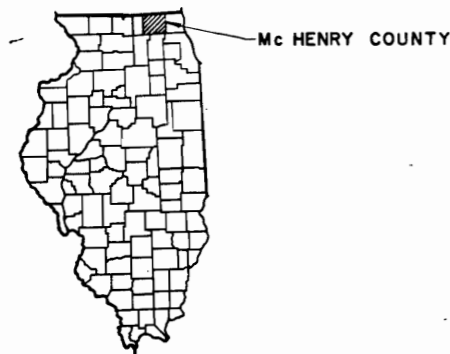


Leon D. Win
ILLINOIS REGISTERED PROFESSIONAL ENGINEER NO. 62-22282

SUBMITTED BY *Leon D. Win* DATE *3-23-78*
CHIEF, BUREAU OF PROJECT IMPLEMENTATION
APPROVED BY *Frank V. Johnson* DATE *3-23-78*
DIRECTOR

FOX RIVER MCHENRY RESURFACING OF ACCESS ROAD AND PARKING LOT

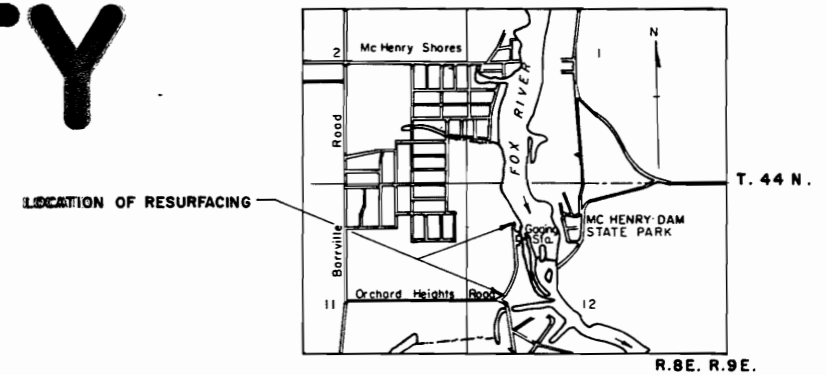
MCHENRY COUNTY



REGIONAL MAP

FR-298
1978

"AS BUILT"



LOCATION MAP

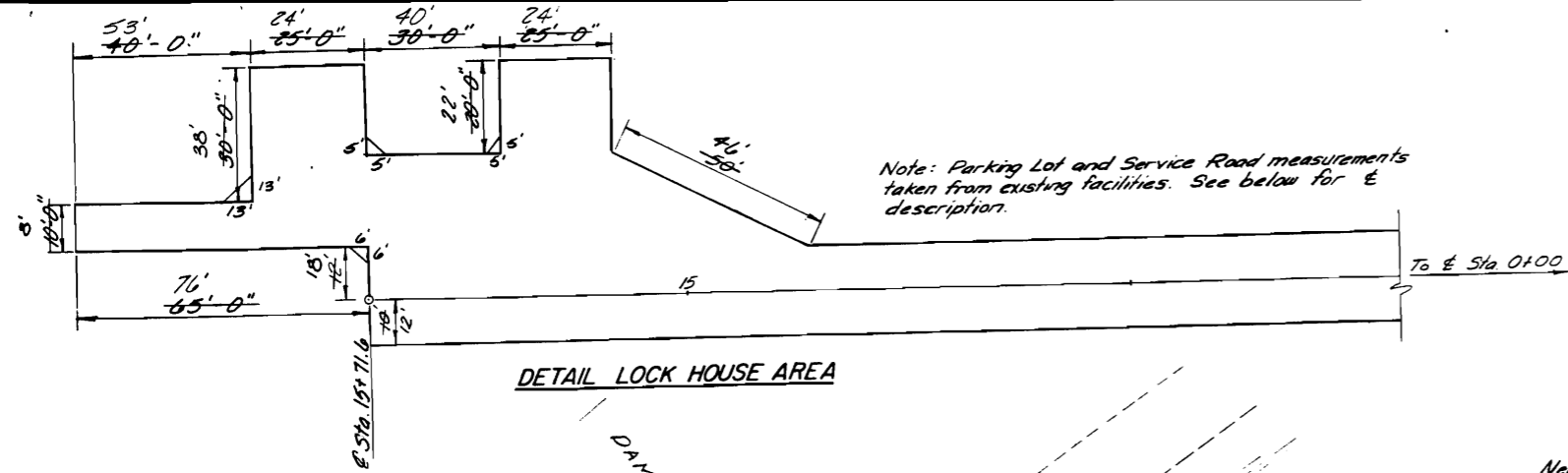
GENERAL NOTES

All elevations refer to mean sea level 1929 adj.
Before Resurfacing, all failures (potholes, deep depressions, or ruts) occurring in the existing surface to be used as the base shall be repaired by scarifying, removing all foreign material and reshaping. For compacting and A-3 Surface coat, See Specifications.

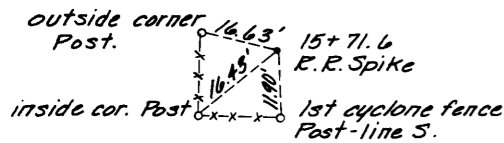
The earthwork required, as shown on the cross sections, including the disposal of excess at the job site, and seeding, mulching and fertilizing, as directed by the Engineer, will not be paid for but shall be considered as incidental to the contract.

Any additional aggregate surface, required by the Engineer, shall be paid for under Article 9-4, Payment for Extra Work.

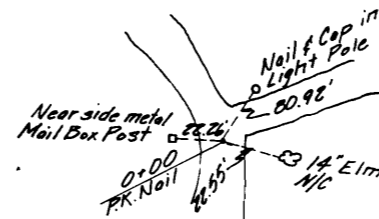
The existing bituminous surfacing between Sta. 0+00 and 1+15.2 shall be repaired by removing all loose and defective materials from all potholes, deep depressions, or ruts, and shall be filled with a Bituminous Mixture for Maintenance Use (Medium Curing Liquid Asphalt Type, Serial No. M 19-13 or other type approved by the Engineer). Compaction shall be obtained by a tandem roller or other approved roller. This work will not be paid for separately, but considered incidental to the contract.



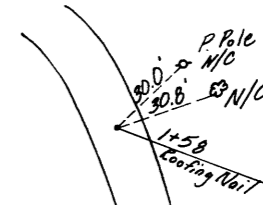
DETAIL LOCK HOUSE AREA



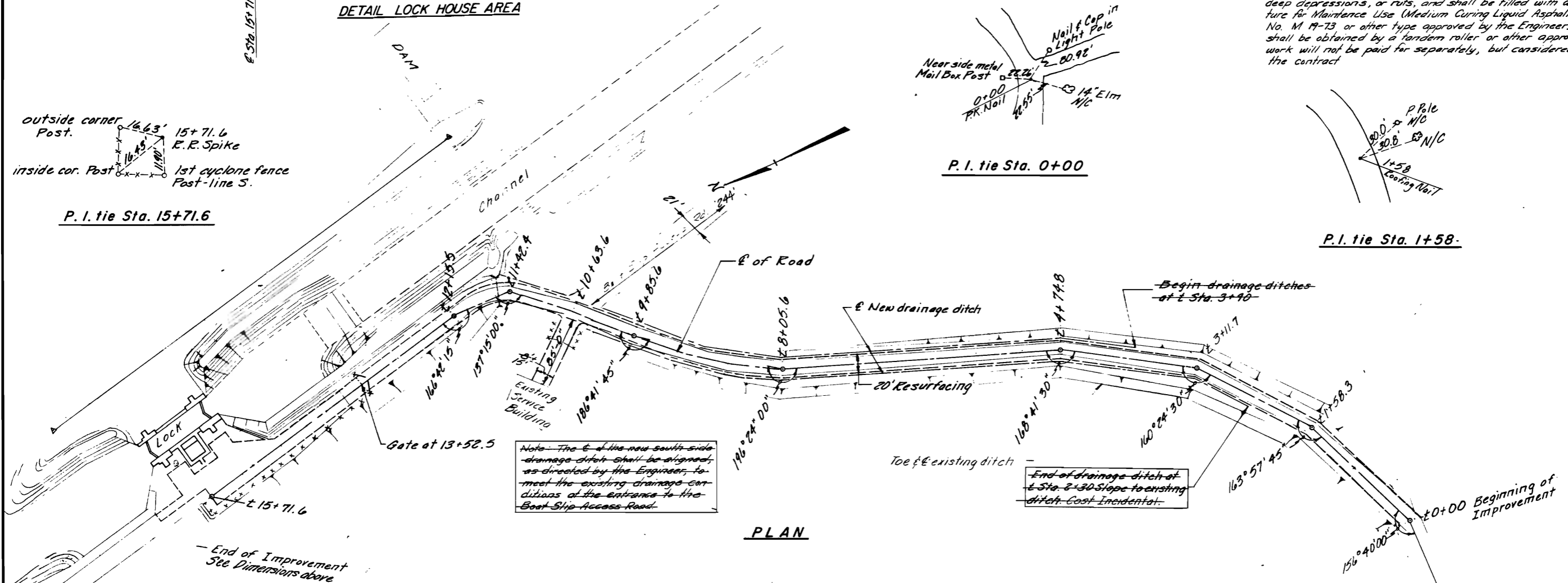
P. I. tie Sta. 15+71.6



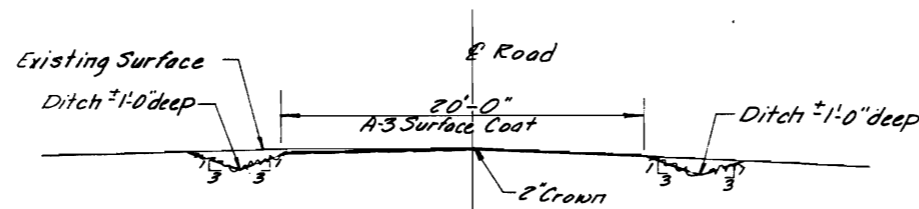
P. I. tie Sta. 0+00



P. I. tie Sta. 1+58



PLAN



TYPICAL SECTION

SUMMARY OF QUANTITIES

ITEM	UNIT	QUANTITY
Bituminous Materials (Prime Coat)	gal.	1,990
Bituminous Materials (Cover and Seal Coats)	gal.	4,180
Cover Coat Aggregate	ton	100
Seal Coat Aggregate	ton	50

Note: The E of the new south side drainage ditch shall be signed, as directed by the Engineer, to meet the existing drainage conditions at the entrance to the Boat Slip Access Road.

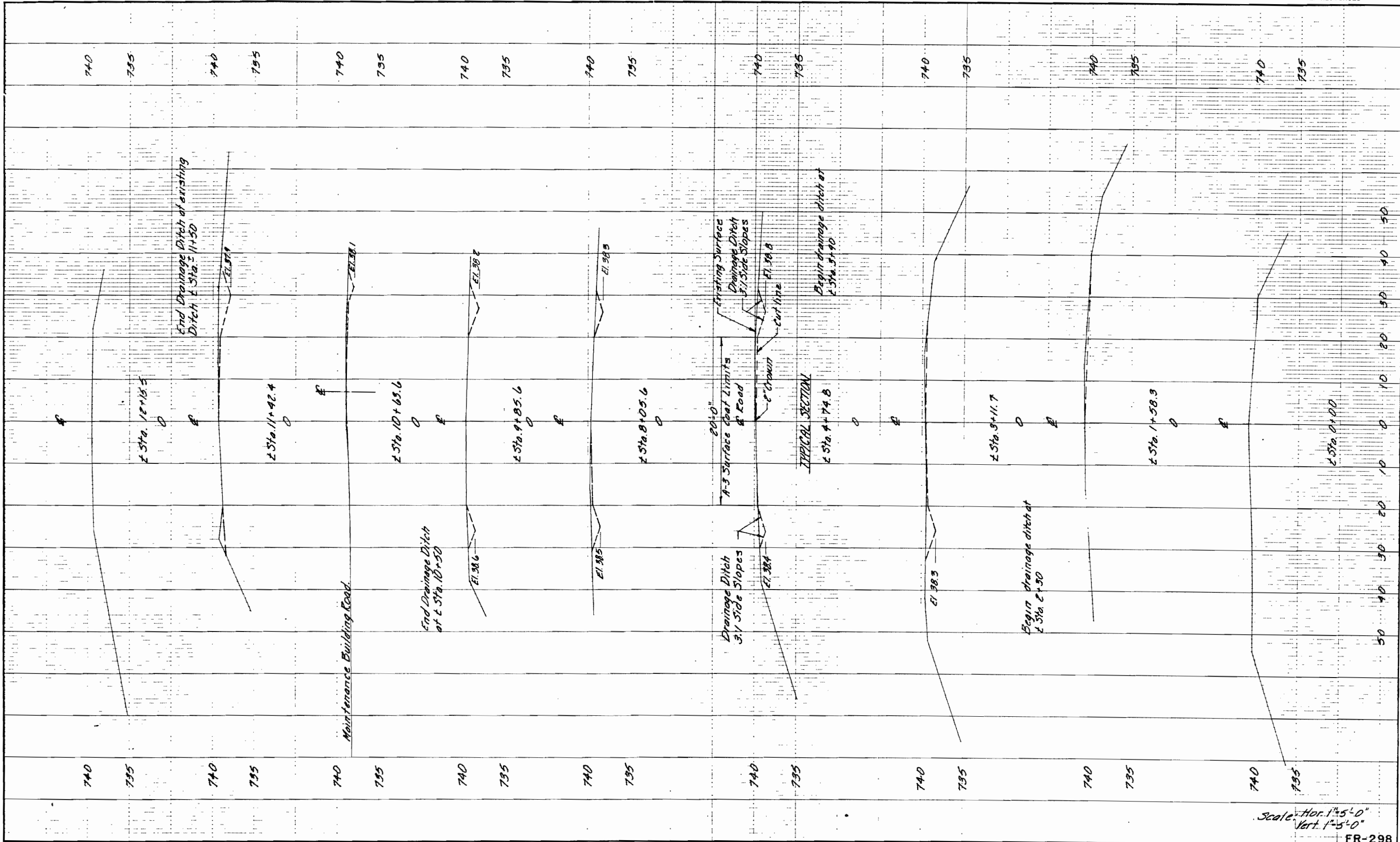
DESIGNED BY
CHECKED BY
ORIGINAL SURVEY
FINAL SURVEY

T.B.M.
P.K. Nail in light pole at entrance to Park & McHenry Lock from State Park Road El. 740.63

REVISIONS

NO.	REVISION LETTER	REVISED BY	DATE
1	As Built	OLH	10-3-78

SCALE: AS SHOWN



Scale: Hor. 1"=5'-0"
Vert. 1"=5'-0"

FR-298

FOX RIVER MC HENRY
CROSS SECTIONS

SCALE AS SHOWN

FILE NO. CLASSIFICATION NO.
SHEET NO. 3 OF 3 SHEETS

DESIGNED BY
CHECKED BY
ORIGINAL SURVEY
FINAL SURVEY

REV	REVISION LETTER	REVISED BY	DATE