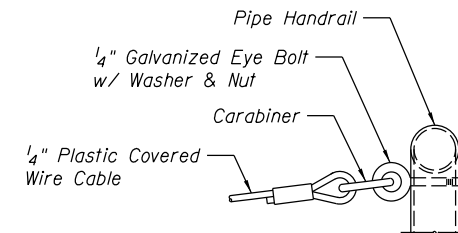
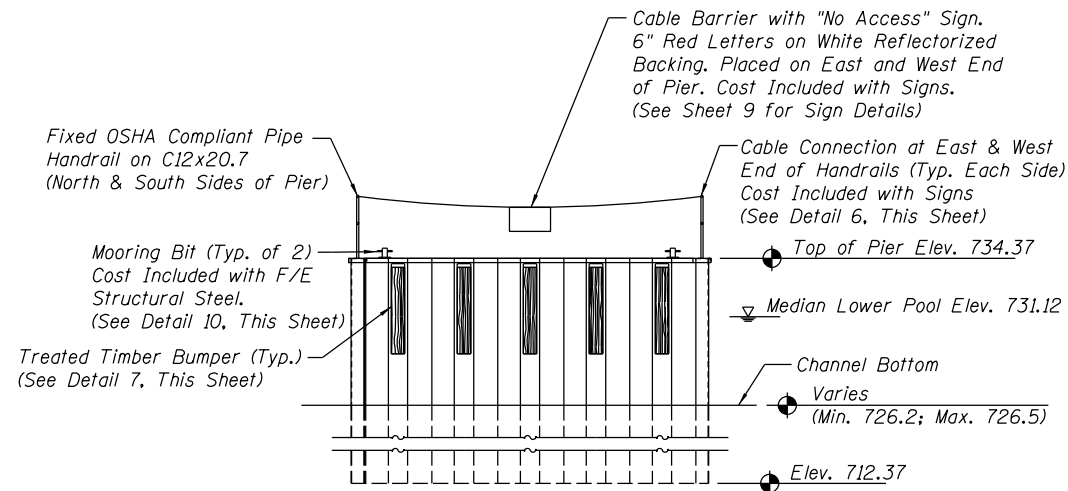
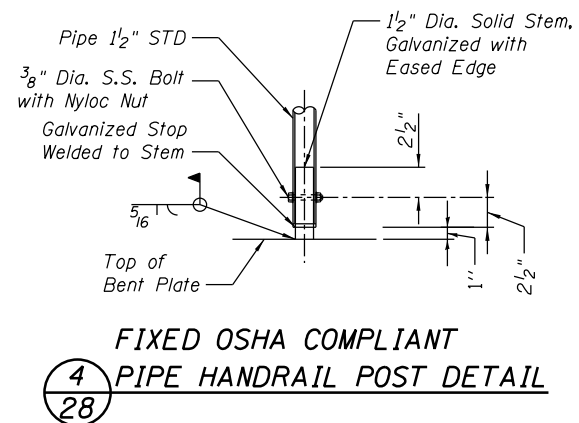


1/28 DETAIL

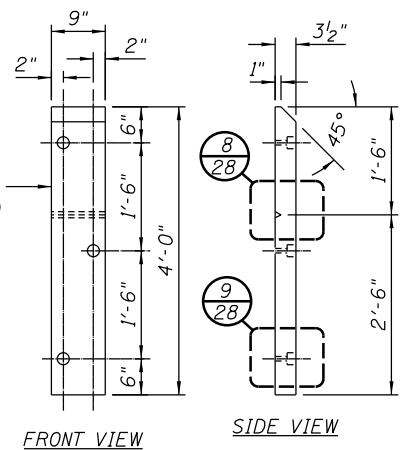
2/28 SECTION

3/28 TYPE 'A' PIPE HANDRAIL



6/28 CABLE CONNECTION DETAIL

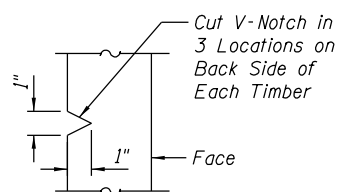
5 Each Required (Including 1 Spare) Timbers Shall be Red Oak (Commercial) Treated per Specifications



7/28 BUMPER TIMBER DETAILS

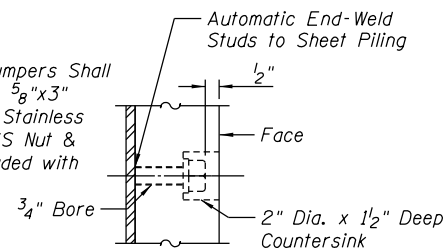
Note: Bumper Timbers Shall Extend Below Elevation 730.00.

Red Oak Timbers Shall be Commercial Grade No. 3 or Better per the Design Values for Wood Construction, by the National Forest Products Association.

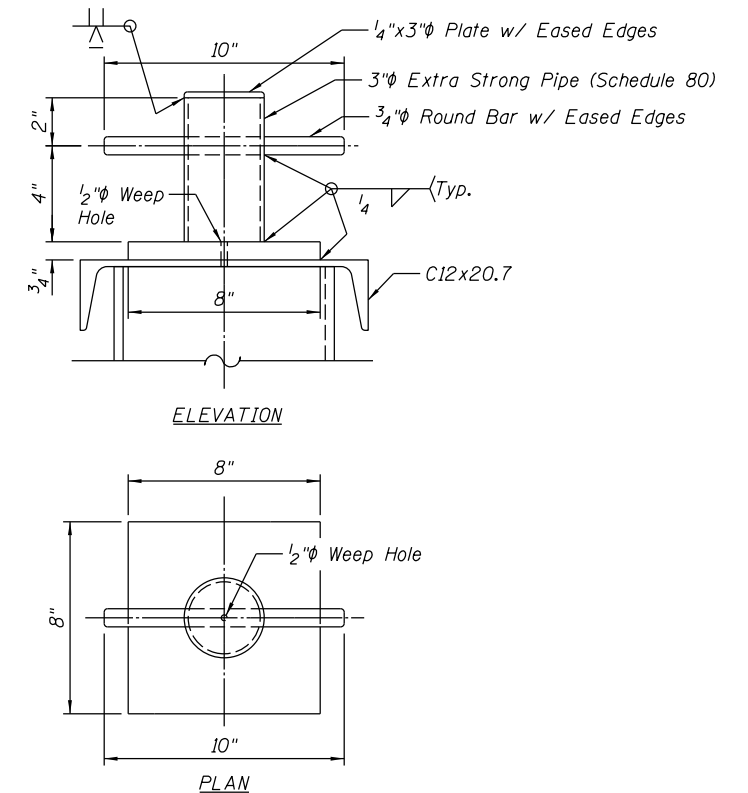


8/28 V-NOTCH DETAIL

Note: Treated Timber Bumpers Shall Be Attached Using 5/8"x3" Partially Threaded Stainless Steel Studs with SS Nut & Washer. Cost Included with Treated Timber.



9/28 ATTACHMENT DETAIL



10/28 MOORING BIT DETAILS

FILE NAME = C-300B-SITE	USER NAME =	DESIGNED - LJB	REVISED - 2/21/2014 EJM
		CHECKED - RGC	REVISED -
	PLOT SCALE =	DRAWN - SKB/EJM	REVISED -
	PLOT DATE = SEPTEMBER 18, 2013	CHECKED - RGC	REVISED -

STATE OF ILLINOIS  
DEPARTMENT OF NATURAL RESOURCES

MAINTENANCE DOCKING PIER SECTIONS & DETAILS  
STRATTON LOCK & DAM - LOCK & GATE STRUCTURE IMPROVEMENTS

ILLINOIS DEPARTMENT  
OF NATURAL RESOURCES  
OFFICE OF WATER RESOURCES

COUNTY	TOTAL SHEETS	SHEET NO.
McHENRY	238	28
PROJECT FR-435		