

02-27-2026 LETTING ITEM 091

INDEX OF SHEETS

- | | |
|-------|-------------------------------|
| 1 | COVER SHEET & INDEX OF SHEETS |
| 2 | GENERAL NOTES |
| 3-4 | SUMMARY OF QUANTITIES |
| 5-7 | SCHEDULES OF QUANTITIES |
| 8-10 | TYPICAL SECTIONS |
| 11-30 | PLANS |
| 31-32 | DETAILS |

STATE OF ILLINOIS
DEPARTMENT OF TRANSPORTATION
PLANS FOR PROPOSED
STR/SMA

PIKE COUNTY HIGHWAY
DEPARTMENT

SECTION 20-00102-00-PP
F.A.S. ROUTE 2601 & 602
CH 2 & 14 (GRIGGSVILLE ROAD) RECLAMATION & RESURFACING
CH 2 FROM GRIGGSVILLE TO VALLEY CITY
CH 4 FROM DETROIT TO CH 2
JOB NO. C-96-080-21
PROJECT NO. 8FKL(446)

R-3-W R-2-W

GAS & ELECTRIC

AMEREN ILLINOIS
1900 W LAFAYETTE STREET
JACKSONVILLE, IL 62650

COMMUNICATIONS

FRONTIER COMMUNICATIONS
300 WEST BEECHER
JACKSONVILLE, IL 62650

CASSCOMM
100 REDBUD ROAD
VIRGINIA, IL 62691

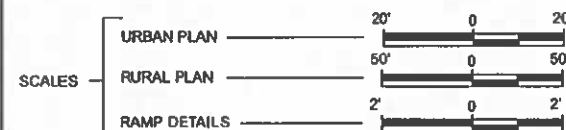
WATER

CITY OF GRIGGSVILLE
108 S COREY STREET
GRIGGSVILLE, IL 62340

PIKE COUNTY WATER DIST NO. 1
949 W WASHINGTON ST
PITTSFIELD, IL 62363

SEWER

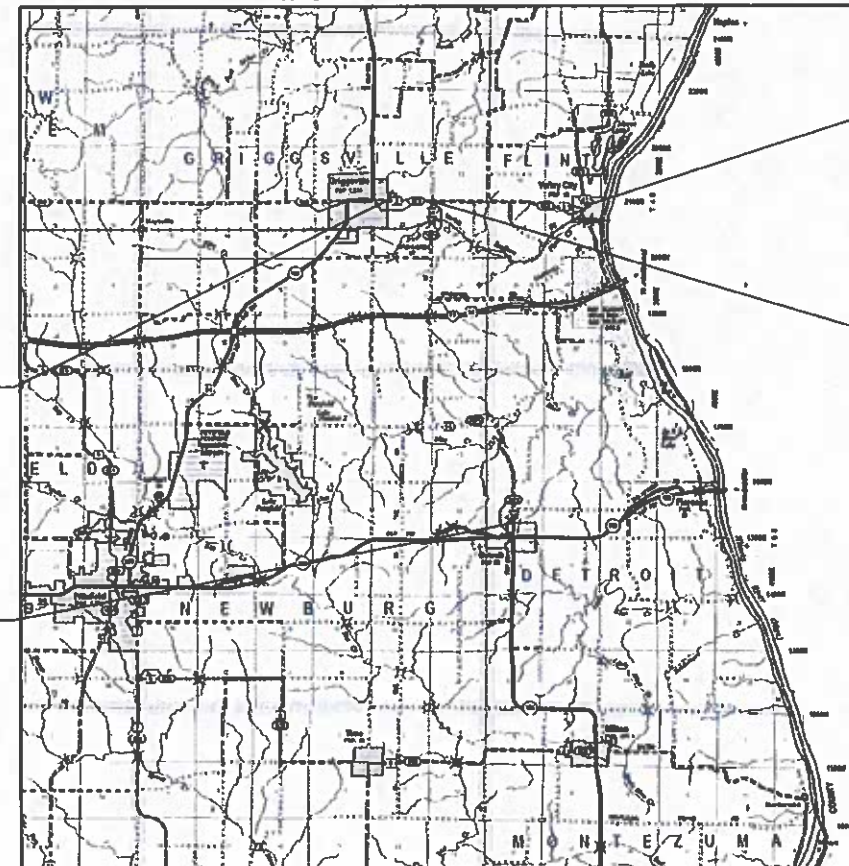
CITY OF GRIGGSVILLE
108 S COREY STREET
GRIGGSVILLE, IL 62340



J.U.L.I.E.
JOINT UTILITY LOCATION INFORMATION FOR EXCAVATION
1-800-892-0123
OR 811

FUNCTIONAL CLASSIFICATION: MAJOR COLLECTOR
ADT (2045): 854 (CH 2); 366 (CH 14)
DESIGN SPEED = 50 MPH

3R GUIDELINES



GROSS LENGTH (COUNTY HIGHWAY 2):	18,711.23 FEET (3.54 MILES)
GROSS LENGTH (COUNTY HIGHWAY 14):	37,359.55 FEET (7.08 MILES)
TOTAL GROSS LENGTH:	56,070.78 FEET (10.62 MILES)
NET LENGTH (COUNTY HIGHWAY 2):	18,711.23 FEET (3.54 MILES)
NET LENGTH (COUNTY HIGHWAY 14):	37,359.55 FEET (7.08 MILES)
TOTAL NET LENGTH:	56,070.78 FEET (10.62 MILES)

HEI Hutchison
Engineering, Inc.

2026

JOB# 5386

F.A.S. ROUTE	SECTION	COUNTY	TOTAL SHEETS	SHEET NO.
2601 & 602	20-00102-00-PP	PIKE	32	1
		ILLINOIS	CONTRACT NO. 93853	

CONTRACT NO. 93853



SECTION 20-00102-00-PP
CH 2 ENDS
STATION 201+11.23

SECTION 20-00102-00-PP
CH 14 ENDS
STATION 377+40.54

DESCRIPTION OF WORK

THIS WORK WILL CONSIST OF IMPROVEMENTS TO CH 2 AND CH 14 IN PIKE COUNTY. IMPROVEMENTS TO CH 2 AND THE SOUTHERN PORTION OF CH 14 WILL INCLUDE COLD IN-PLACE RECYCLING FOLLOWED BY AN HMA OVERLAY. ALSO INCLUDED WILL BE ASSOCIATED WORK SUCH AS AGGREGATE WEDGE SHOULDERS, GUARDRAIL REPLACEMENT, AND PAVEMENT MARKING. IMPROVEMENTS TO THE REMAINDER OF CH 14 WILL INCLUDE FULL-DEPTH RECLAMATION FOLLOWED BY AN HMA OVERLAY. ALSO INCLUDED WILL BE ASSOCIATED WORK SUCH AS AGGREGATE WEDGE SHOULDERS, GUARDRAIL REPLACEMENT, AND PAVEMENT MARKING.

BRIAN M. BORGMAN
062-058271
REGISTERED
PROFESSIONAL
ENGINEER
STATE OF ILLINOIS
B. B. B.
SIGNATURE DATE: 11/18/2025
ENGINEER'S SEAL EXPIRES 11/30/2027

APPROVED	11-18	2025
PIKE COUNTY ENGINEER		
PASSED	Nov 19	2025
DISTRICT SIX ENGINEER OF LOCAL ROADS & STREETS		
Released For Bid Based on Limited Review	Nov 19	2025
REGION FOUR ENGINEER STATE OF ILLINOIS DEPARTMENT OF TRANSPORTATION		

GENERAL NOTES

1. THE LOCATION OF UNDERGROUND UTILITIES SHOWN ON THE PLANS REPRESENTS THE BEST KNOWLEDGE OF THE COUNTY AND THE INDICATED ADJUSTMENTS OR RECONSTRUCTION ARE CONSIDERED TO BE REASON-ABLY ACCURATE. IT SHALL BE THE CONTRACTOR'S RESPONSIBILITY TO VERIFY LOCATIONS OF UNDERGROUND INSTALLATIONS BEFORE STARTING CONSTRUCTION OPERATIONS. THE CONTRACTOR SHALL INDEMNIFY THE COUNTY, ITS OFFICERS, AND EMPLOYEES AGAINST ALL CLAIMS DUE TO DAMAGE TO CORPORATE OR PRIVATE PROPERTY RESULTING FROM HIS CONSTRUCTION OPERATIONS AS DESCRIBED IN ARTICLE 107.20 AND 107.26 OF THE STANDARD SPECIFICATIONS FOR ROAD AND BRIDGE CONSTRUCTION.
2. WHERE SECTION OR SUB-SECTION MONUMENTS ARE ENCOUNTERED, THE ENGINEER SHALL BE NOTIFIED BEFORE SUCH MONUMENTS ARE REMOVED. THE CONTRACTOR SHALL PROTECT AND PRESERVE PROPERTY MARKERS AND MONUMENTS UNTIL THE OWNER, AN AUTHORIZED SURVEYOR OR AGENT HAS WITNESSED OR OTHERWISE REFERENCED THEIR LOCATION.
3. THE CONTRACTOR SHALL NOTIFY THE AGENCIES AND UTILITIES AT LEAST 10 (TEN) DAYS PRIOR TO ANY CONSTRUCTION IN THE AREA AND SHALL COMPLY WITH ALL RESTRICTIONS FOR EQUIPMENT MOVEMENTS AND CLEARANCES AS REGARDS TO THEIR FACILITIES.
4. BEFORE STARTING ANY EXCAVATION, THE CONTRACTOR MUST CALL J.U.L.I.E. AT 1-800-892-0123 or 811 FOR FIELD LOCATIONS OF BURIED ELECTRICAL, TELEPHONE, GAS FACILITIES, AND ALL PUBLIC UTILITIES. A 48 HOUR NOTIFICATION IS REQUIRED.
5. VERIFICATION OF DIMENSIONS : IT IS THE CONTRACTOR'S RESPONSIBILITY TO VERIFY ALL DIMENSIONS AND CONDITIONS EXISTING IN THE FIELD PRIOR TO CONSTRUCTION AND ORDERING MATERIALS.
6. THE CONTRACTOR SHALL BE REQUIRED TO PROVIDE ACCESS TO ABUTTING PROPERTY OWNERS AT ALL TIMES DURING CONSTRUCTION OF THE PROJECT.
7. DURING CONSTRUCTION OPERATIONS, IF ANY LOOSE MATERIAL IS DEPOSITED IN THE FLOW LINE OF DITCHES, GUTTERS OR DRAINAGE STRUCTURES SO THAT THE NATURAL FLOW OF WATER IS OBSTRUCTED, IT SHALL BE REMOVED AT THE CLOSE OF EACH WORKING DAY. AT THE CONCLUSION OF CONSTRUCTION OPERATIONS, ALL DRAINAGE STRUCTURES SO AFFECTED SHALL BE FREE FROM ALL DEBRIS. THIS WORK SHALL BE INCLUDED WITH THE COST OF THE CONTRACT.
8. TRAFFIC SIGNS REMOVED MUST BE RESET AT THEIR PERMANENT LOCATIONS IN A WORKMANLIKE MANNER AND VISIBLE TO TRAFFIC ON THE ROADWAY AS DIRECTED BY THE ENGINEER. THESE SIGNS SHALL BE RESET BEFORE THE ROADWAY IS OPEN TO TRAFFIC. COST OF SUCH WORK SHALL BE INCLUDED WITH THE COST OF THE CONTRACT.
9. ANY AREAS DISTURBED BY CONSTRUCTION ACTIVITES SHALL BE FERTILIZED, MULCHED, AND SEEDED WITH A CLASS 2 SEED MIXTURE IN ACCORDANCE WITH SECTIONS 250 AND 251 OF THE STANDARD SPECIFICATIONS. THIS WORK SHALL NOT BE PAID FOR SEPARATELY.
10. ALL PROPOSED PAVEMENT WIDTHS ARE MEASURED EDGE TO EDGE OF PAVEMENT UNLESS OTHERWISE SHOWN ON THE PLANS.
11. ANY REFERENCE TO STANDARDS THROUGHOUT THE PLANS SHALL BE INTERPRETED TO REFER TO THE LATEST STANDARDS OF THE ILLINOIS DEPARTMENT OF TRANSPORTATION AS SHOWN ON THE TABULATION OF REQUIRED STANDARDS SHOWN IN THE PLANS.
12. ALL EXISTING PRIVATELY OWNED UTILITIES REQUIRING ADJUSTMENT WILL BE MADE BY THE UTILITY COMPANY INVOLVED. WHERE NO PROVISIONS HAVE BEEN MADE FOR ADJUSTMENTS ON THE PLANS, NO ADDITIONAL COMPENSATION WILL BE ALLOWED DUE TO DELAYS OR INCONVENIENCES CAUSED BY THE UTILITY ADJUSTMENTS.
13. THE PRINTED PLANS AND SPECIFICATIONS SHALL TAKE PRECEDENCE OVER ANY MICROSTATION, OPENROADS DESIGNER, OR OTHER ELECTRONIC FILES MADE AVAILABLE TO THE CONTRACTOR AFTER CONTRACT AWARD. THE CONTRACTOR SHALL ACCEPT ALL RISK ASSOICATED WITH USING THE ELECTRONIC FILES AND SHALL HOLD THE COUNTY HARMLESS FOR ANY ERRORS OR OMISSIONS IN THE ELECTRONIC FILES AND THE DATA CONTAINED THEREIN. ERRORS OR DELAYS RESULTING FROM THE USE OF THE ELECTRONIC FILES BY THE CONTRACTOR SHALL NO RESULT IN AN EXTENSION OF TIME. THE CONTRACTOR SHALL NOT USE, SHARE, OR DISTRIBUTE THESE ELECTRONIC FILES EXCEPT FOR THE PURPOSE OF CONSTRUCTING THIS CONTRACT. ANY CLAIMS BY THIRD PARTIES DUE TO USE OR ERRORS SHALL BE THE SOLE RESPONSIBILITY OF THE CONTRACTOR. THE CONTRACTOR SHALL INCLUDE THIS DISCLAIMER WITH THE TRANSFER OF THESE FILES TO ANY OTHER PARTIES AND SHALL INCLUDE APPROPRIATE LANGUAGE BINDING THEM TO SIMILAR RESPONSIBILITIES.
14. ANY GRADING OR EMBANKMENT ASSOCIATED WITH REMOVING AND REPLACING THE EXISTING GUARDRAIL TERMINALS WILL BE COMPLETED BY PIKE COUNTY EITHER AHEAD OF OR DURING CONSTRUCTION ACTIVITIES. THE CONTRACTOR SHALL COORDINATE AS NEEDED WITH THE COUNTY REGARDING THIS.

THE FOLLOWING RATES OF APPLICATION HAVE BEEN ASSUMED IN CALCULATING PLAN QUANTITIES :

TYPE B AGGREGATE _____	2.05 TON/CUBIC YARD
BITUMINOUS MATERIALS (PRIME COAT) _____	0.25 POUND/SQUARE FOOT
BITUMINOUS MATERIALS (TACK COAT) _____	0.025 POUND/SQUARE FOOT
HOT-MIX ASPHALT _____	0.056 TON/SQUARE YARD - INCH
EMULSIFIED ASPHALT _____	1.6 GAL/SY (COLD IN-PLACE RECYCLING)*
	2.4 GAL/SY (FULL-DEPTH RECLAMATION)*

* ACTUAL RATES TO BE DETERMINED DURING THE PAVEMENT DESIGN PROCESS

STANDARDS

000001-09	STANDARD SYMBOLS, ABBREVIATIONS AND PATTERNS
001006	DECIMAL OF AN INCH AND OF A FOOT
406201-01	MAILBOX TURNOUT
630001-13	STEEL PLATE BEAM GUARDRAIL
701006-05	OFF-RD OPERATIONS, 2L, 2W, 15' TO 24" FROM PAVEMENT EDGE
701306-04	LANE CLOSURE, 2L, 2W, SLOW MOVING OPERATIONS DAY ONLY
701311-03	LANE CLOSURE, 2L, 2W, MOVING OPERATIONS-DAY ONLY
701901-11	TRAFFIC CONTROL DEVICES
725001-01	OBJECT AND TERMINAL MARKERS
780001-05	TYPICAL PAVEMENT MARKINGS
BLR 17-4	TRAFFIC CONTROL DEVICES - DAY LABOR CONSTRUCTION
BLR 22-7	TYPICAL APPLICATION OF TRAFFIC CONTROL DEVICES FOR CONSTRUCTION ON RURAL LOCAL HIGHWAYS

MIXTURE REQUIREMENTS

THE FOLLOWING MIXTURE REQUIREMENTS ARE APPLICABLE FOR THIS PROJECT:

LOCATION(S):	CH 14	CH 2 / 14	ENTRANCES	SIDEROADS
MIXTURE USE(S):	BINDER	SURFACE	INCIDENTAL	
AC/PG:	PG 64-22	PG 64-22	PG 64-22	
DESIGN AIR VOIDS	4% @ Ndes=50	4% @ Ndes=50	4% @ Ndes=50	
MIXTURE COMP (GRADATION)	IL-9.5	IL-9.5	IL-9.5	
FRICTION				
AGGREGATE	N/A	MIX "C"	MIX "C"	
MIXTURE WEIGHT	112	112	112	
QUALITY MANAGEMENT PROGRAM	QC/QA	QC/QA	QC/QA	
SUBLOT SIZE	N/A	N/A	N/A	
MATERIAL TRANSFER DEVICE (REQUIRED?)	N/A	N/A	N/A	

MODEL: Gen_Notes-01 [Sheet]
FILE NAME: V:\5386 - CH 2 and CH 14 Reconstruction (Pike)\CADD\CADD Sheets\5386-shl-gennote.dgn



Hutchison
Engineering, Inc.

USER NAME = CThomas	DESIGNED -	REVISED -
	DRAWN -	REVISED -
	CHECKED -	REVISED -
PLOT DATE = 10/7/2025	DATE -	REVISED -

STATE OF ILLINOIS
DEPARTMENT OF TRANSPORTATION

COUNTY HIGHWAY 2 & COUNTY HIGHWAY 14
GENERAL NOTES

SCALE: SHEET 1 OF 1 SHEETS STA. TO STA.

F.A.S. RTE.	SECTION	COUNTY	TOTAL SHEETS	SHEET NO.
2601	20-00102-00-PP	PIKE	32	2
CONTRACT NO. 93853				
ILLINOIS FED. AID PROJECT				

MODEL: SQ0401 [Sheet]
FILE NAME: Y:\5386 - CH 2 and CH 14 Reconstruction (Pike)\CADD\CADD Sheets\5386-sht-SQ.dgn

USER NAME	= HCoultas	DESIGNED	- HRC	REVISED	-
		DRAWN	- HRC	REVISED	-
		CHECKED	- BMB	REVISED	-
PLOT DATE	= 11/13/2025	DATE	- 10/10/2025	REVISED	-

STATE OF ILLINOIS DEPARTMENT OF TRANSPORTATION

COUNTY HIGHWAY 2 & COUNTY HIGHWAY 14 SUMMARY OF QUANTITIES			
SCALE:	SHEET 1	OF 2	SHEETS
STA.		TO STA.	

F.A.S. RTE.	SECTION	COUNTY	TOTAL SHEETS	SHEET NO.
2601	20-00102-00-PP	PIKE	32	3
CONTRACT NO. 93853				
ILLINOIS		FED. AID PROJECT		

SUMMARY OF QUANTITIES			
CODE NO.	ITEM	UNIT	TOTAL QUANTITY
40200800	AGGREGATE SURFACE COURSE, TYPE B	TON	367
40600275	BITUMINOUS MATERIALS (PRIME COAT)	POUND	167684
40600290	BITUMINOUS MATERIALS (TACK COAT)	POUND	40213
40600982	HOT-MIX ASPHALT SURFACE REMOVAL - BUTT JOINT	SQ YD	954
40600990	TEMPORARY RAMP	SQ YD	159
40602978	HOT-MIX ASPHALT BINDER COURSE, IL- 9.5, N50	TON	6100
40604050	HOT-MIX ASPHALT SURFACE COURSE, IL-9.5, MIX "C", N50	TON	11504
40800050	INCIDENTAL HOT-MIX ASPHALT SURFACING	TON	418
48102100	AGGREGATE WEDGE SHOULDER, TYPE B	TON	6956
* 63000003	STEEL PLATE BEAM GUARDRAIL, TYPE A, 9 FOOT POSTS	FOOT	975
* 63100167	TRAFFIC BARRIER TERMINAL, TYPE 1 (SPECIAL) TANGENT	EACH	16
* 63200310	GUARDRAIL REMOVAL	FOOT	1775
67100100	MOBILIZATION	L SUM	1
70300100	SHORT TERM PAVEMENT MARKING	FOOT	11196

* SPECIALTY ITEM

SUMMARY OF QUANTITIES			
CODE NO.	ITEM	UNIT	TOTAL QUANTITY
70300150	SHORT TERM PAVEMENT MARKING REMOVAL	SQ FT	3732
* 72501000	TERMINAL MARKER - DIRECT APPLIED	EACH	16
* 78001110	PAINT PAVEMENT MARKING - LINE 4"	FOOT	86270
LR400055	CIR-FDR EMLUSIFIED ASPHALT	TON	1216
LR400740	COLD IN-PLACE RECYCLING, 4.0"	SQ YD	65741
LR400840	FULL-DEPTH RECLAMATION, 4.0"	SQ YD	74630
LR403300	SURFACE PROFILE MILLING	SQ YD	140370
# Z0076600	TRAINIEES	HOURL	2000
X7010216	TRAFFIC CONTROL AND PROTECTION, (SPECIAL)	L SUM	1
# Z0076604	TRAINEES TRAINING PROGRAM GRADUATE	HOURL	2000
Z0048665	RAILROAD PROTECTIVE LIABILITY INSURANCE	L SUM	1

* SPECIALTY ITEM # 0042

MODEL: SQ002 (Sheet)
FILE NAME: Y:\5386 - CH 2 and CH 14 Reconstruction (Pike)\CADD\CADD Sheets\5386-ent-SQ.dgn

BUTT JOINT & TEMPORARY RAMP SCHEDULE			
STATION TO STATION		40600982	40600990
		HOT-MIX ASPHALT SURFACE REMOVAL - BUTT JOINT	TEMPORARY RAMP
		SQ YD	SQ YD
CH 2			
14+00.00	14+30.00	73.3	12.2
200+81.23	201+11.23	73.3	12.2
CH 14			
4+75.00	5+05.00	73.3	12.2
266+02.35	266+62.35	146.7	24.4
268+92.86	269+52.86	146.7	24.4
358+04.55	358+64.55	146.7	24.4
359+43.30	360+03.30	146.7	24.4
376+80.54	377+40.54	146.7	24.4
TOTALS		953.3	158.6
USE		954	159

GUARDRAIL SCHEDULE						
STATION TO STATION		SIDE	63200310	63000003	63100167	72501000
			GUARDRAIL REMOVAL	STEEL PLATE BEAM GUARDRAIL, TYPE A, 9 FOOT POSTS	TRAFFIC BARRIER TERMINAL	TERMINAL MARKER - DIRECT APPLIED
					TYPE 1 (SPECIAL) TANGENT	
					FOOT	
COUNTY HIGHWAY 2						
135+55.00	139+17.50	LT	362.5	262.5	2	2
135+55.00	139+92.50	RT	437.5	337.5	2	2
147+55.00	150+92.50	RT	337.5	237.5	2	2
147+60.00	149+97.50	LT	237.5	137.5	2	2
COUNTY HIGHWAY 14						
83+36.69	83+75.82	RT	50.0		1	1
83+37.19	83+76.00	LT	50.0		1	1
85+20.41	85+60.01	LT	50.0		1	1
85+20.56	85+59.62	RT	50.0		1	1
265+49.74	266+62.23	RT	50.0		1	1
265+99.30	266+62.47	LT	50.0		1	1
268+92.81	270+06.22	LT	50.0		1	1
268+92.91	269+55.73	RT	50.0		1	1
TOTAL			1775.0	975.0	16	16
SUM			1775	975	16	16

SHORT TERM PAVEMENT MARKING			
STATION TO STATION		70300100	70300150
		SHORT TERM PAVEMENT MARKING	SHORT TERM PAVEMENT MARKING REMOVAL
		FOOT	SQ FT
CH 2			
14+00.00	201+11.23	3742.2	1247.4
CH 14			
4+75.00	377+40.54	7453.1	2484.4
TOTALS		11195.4	3731.8
USE		11196	3732

PAVEMENT MARKING SCHEDULE					
STATION TO STATION		SIDE	DESCRIPTION	78001110	
				PAINT PAVEMENT MARKING	
				4"	
				SKIP-DASH YELLOW	SOLID YELLOW
				FOOT	
COUNTY HIGHWAY 2					
14+00.00	28+35.00	CL	CL SKIP-DASH	358.75	
19+43.99	45+30.19	CL	EB NO PASSING		2586.20
28+35.00	55+49.63	CL	WB NO PASSING		2714.63
45+30.19	74+28.37	CL	CL SKIP-DASH	724.55	
63+44.12	78+59.82	CL	EB NO PASSING		1515.70
74+28.37	87+29.39	CL	WB NO PASSING		1301.02
78+59.82	128+42.70	CL	CL SKIP-DASH	1245.72	
116+34.27	142+95.63	CL	EB NO PASSING		2661.36
128+42.70	154+33.40	CL	WB NO PASSING		2590.70
142+95.63	170+90.81	CL	CL SKIP-DASH	698.80	
162+93.63	201+11.23	CL	EB NO PASSING		3817.60
170+90.81	201+11.23	CL	WB NO PASSING		3020.42
COUNTY HIGHWAY 14					
4+88.73	24+07.78	CL	CL SKIP-DASH	479.76	
4+88.73	88+81.21	CL	NB NO PASSING		8392.48
24+07.78	99+83.21	CL	SB NO PASSING		7575.43
88+81.20	94+28.12	CL	CL SKIP-DASH	136.73	
94+28.12	141+69.12	CL	NB NO PASSING		4741.00
99+83.21	105+72.58	CL	CL SKIP-DASH	147.34	
105+72.58	152+64.97	CL	SB NO PASSING		4692.39
141+69.12	145+68.76	CL	CL SKIP-DASH	99.91	
145+68.76	181+58.01	CL	NB NO PASSING		3589.25
152+64.97	156+80.44	CL	CL SKIP-DASH	103.87	
156+80.44	192+57.08	CL	SB NO PASSING		3576.64
181+58.01	209+55.41	CL	CL SKIP-DASH	699.35	
193+61.85	202+55.71	CL	NB NO PASSING		893.86
204+57.74	213+53.79	CL	SB NO PASSING		896.05
209+55.41	219+52.88	CL	NB NO PASSING		997.47
213+53.79	223+58.07	CL	CL SKIP-DASH	251.07	
220+56.57	230+50.82	CL	SB NO PASSING		994.25
223+58.07	245+50.67	CL	NB NO PASSING		2192.60
230+50.82	234+51.69	CL	CL SKIP-DASH	100.22	
234+51.69	256+47.36	CL	SB NO PASSING		2195.67
245+50.67	252+45.66	CL	CL SKIP-DASH	173.75	
252+45.66	266+62.35	CL	NB NO PASSING		1416.69
256+47.36	263+45.92	CL	CL SKIP-DASH	174.64	
263+45.92	266+62.35	CL	SB NO PASSING		316.43
268+92.86	284+41.69	CL	NB NO PASSING		1548.83
268+92.86	295+74.92	CL	SB NO PASSING		2682.06
284+41.69	306+31.91	CL	CL SKIP-DASH	547.56	
295+74.92	316+29.23	CL	NB NO PASSING		2054.31
306+31.91	327+28.85	CL	SB NO PASSING		2096.94
306+29.23	320+81.78	CL	CL SKIP-DASH	363.14	
320+81.78	328+41.21	CL	NB NO PASSING		759.43
327+28.85	337+01.87	CL	CL SKIP-DASH	243.26	
331+66.87	341+78.87	CL	SB NO PASSING		1012.00
337+01.87	358+64.55	CL	NB NO PASSING		2162.68
341+78.87	348+26.57	CL	CL SKIP-DASH	161.92	
348+26.57	358+64.55	CL	SB NO PASSING		1037.98
359+43.31	377+06.71	CL	NB NO PASSING		1763.40
359+43.31	377+06.71	CL	SB NO PASSING		1763.40
TOTAL				6710.32	79558.87
USE				86270	

MODEL: Schedules-01 (Sheet)
FILE NAME: Y:\5386 - CH 2 and CH 14 Reconstruction (Pike)\CADD\CADD Sheets\5386-shh-schedule.dgn



Hutchison
Engineering, Inc.

USER NAME = HCOultas	DESIGNED - HRC	REVISED -
	DRAWN - HRC	REVISED -
	CHECKED - BMB	REVISED -
PLOT DATE = 11/13/2025	DATE - 10/10/2025	REVISED -

STATE OF ILLINOIS
DEPARTMENT OF TRANSPORTATION

COUNTY HIGHWAY 2 & COUNTY HIGHWAY 14
SCHEDULES OF QUANTITIES

SCALE: SHEET 1 OF 3 SHEETS STA. TO STA.

F.A.S. RTE.	SECTION	COUNTY	TOTAL SHEETS	SHEET NO.
2601	20-00102-00-PP	PIKE	32	5
CONTRACT NO. 93853				
ILLINOIS		FED. AID PROJECT		

MODEL: Schedules02 (Sheet)
FILE NAME: Y:\5386 - CH 2 and CH 14 Reconstruction (Pike)\CADD\CADD Sheets\5386-CH-schedule.dgn

PAVEMENT SCHEDULE									
STATION TO STATION		LR400740	LR400840	LR400055	LR403300	40602978	40604050	40600275	40600290
		COLD IN-PLACE RECYCLING, 4.0"	FULL-DEPTH RECLAMATION, 4.0"	CIR-FDR EMULSIFIED ASPHALT	SURFACE PROFILE MILLING	HOT-MIX ASPHALT BINDER COURSE, IL-9.5, N50	HOT-MIX ASPHALT SURFACE COURSE, IL- 9.5, MIX "C" N50	BITUMINOUS MATERIALS	
						1 1/2"		PRIME COAT	TACK COAT
		SQ YD	SQ YD	TON	SQ YD	TON		POUND	
CH 2									
14+00.00	54+48.00	10120.0		69.2	10120.0		835.9		3643.2
54+48.00	94+52.00	10010.0		68.5	10010.0		826.8		3603.6
94+52.00	107+77.00	3312.5		22.7	3312.5		273.6		1192.5
107+77.00	128+89.00	5280.0		36.1	5280.0		436.1		1900.8
128+89.00	201+11.23	18055.6		123.5	18055.6		1491.4		6500.0
CH 2 TOTALS		46778.1	0.0	320.0	46778.1	0.0	3863.9	0.0	16840.1
CH 14									
4+75.00	17+10.00	3087.5		21.1	3087.5		255.0		1111.5
17+10.00	43+48.00	6595.0		45.1	6595.0		544.7		2374.2
43+48.00	80+60.00	9280.0		63.5	9280.0		766.5		3340.8
80+60.00	83+76.00		807.6	8.3	807.6	66.0	65.3	1817.0	177.8
83+76.00	85+20.00						29.7		81.0
85+20.00	99+82.00		3736.2	38.3	3736.2	305.3	301.9	8406.5	822.4
99+82.00	158+78.00		15067.6	154.6	15067.6	1231.3	1217.5	33902.0	3316.5
158+78.00	187+79.00		7413.7	76.1	7413.7	605.8	599.1	16680.8	1631.8
187+79.00	215+81.00		7160.7	73.5	7160.7	585.2	578.6	16111.5	1576.1
215+81.00	229+30.00		3447.4	35.4	3447.4	281.7	278.6	7756.8	758.8
229+30.00	242+56.00		3388.7	34.8	3388.7	276.9	273.8	7624.5	745.9
242+56.00	261+00.00		4712.4	48.3	4712.4	385.1	380.8	10603.0	1037.3
261+00.00	266+62.35		1437.1	14.7	1437.1	117.4	116.1	3233.5	316.3
BRIDGE OMISSION STA 266+62.35 TO STA 268+92.86									
268+92.86	273+64.00		1204.0	12.4	1204.0	98.4	97.3	2709.1	265.0
273+64.00	284+42.00		2754.9	28.3	2754.9	225.1	222.6	6198.5	606.4
284+42.00	323+00.00		9859.3	101.2	9859.3	805.7	796.7	22183.5	2170.1
323+00.00	356+45.00		8548.3	87.7	8548.3	698.5	690.7	19233.8	1881.6
356+45.00	357+10.00						13.4		36.6
357+10.00	358+64.55		395.0	4.1	395.0	32.3	31.9	888.7	86.9
RR OMISSION 358+64.55 TO STA 359+43.30									
359+43.30	376+60.00		4387.1	45.0	4387.1	358.5	354.5	9871.0	965.6
376+60.00	377+40.54		309.0	3.2	309.0	26.0	24.4	463.1	69.5
CH 14 TOTALS		18962.5	74629.0	895.4	93591.5	6099.2	7639.3	167683.1	23372.1
GRAND TOTALS		65740.6	74629.0	1215.4	140369.6	6099.2	11503.2	167683.1	40212.2
USE		65741	74630	1216	140370	6100	11504	167684	40213

SHOULDER SCHEDULE		
STATION TO STATION		48102100
		AGGREGATE WEDGE SHOULDER, TYPE B
		TON
CH 2		
14+00.00	54+48.00	384.2
54+48.00	94+52.00	380.0
94+52.00	107+77.00	125.8
107+77.00	128+89.00	200.4
128+89.00	201+11.23	685.4
CH 2 TOTALS		1775.8
CH 14		
4+75.00	17+10.00	117.2
17+10.00	43+48.00	250.4
43+48.00	80+60.00	352.3
80+60.00	83+76.00	48.0
83+76.00	85+20.00	21.9
85+20.00	99+82.00	222.0
99+82.00	158+78.00	895.3
158+78.00	187+79.00	440.5
187+79.00	215+81.00	425.5
215+81.00	229+30.00	204.8
229+30.00	242+56.00	201.4
242+56.00	261+00.00	280.0
261+00.00	266+62.35	85.4
BRIDGE OMISSION STA 266+62.35 TO STA 268+92.86		
268+92.86	273+64.00	71.5
273+64.00	284+42.00	163.7
284+42.00	323+00.00	585.8
323+00.00	356+45.00	507.9
356+45.00	357+10.00	9.9
357+10.00	358+64.55	23.5
RR OMISSION 358+64.55 TO STA 359+43.30		
359+43.30	376+60.00	260.7
376+60.00	377+40.54	12.2
CH 14 TOTALS		5180.0
GRAND TOTALS		6955.8
USE		6956

USER NAME = HCOultas	DESIGNED - HRC	REVISED -
	DRAWN - HRC	REVISED -
	CHECKED - BMB	REVISED -
	DATE - 10/10/2025	REVISED -

STATE OF ILLINOIS
DEPARTMENT OF TRANSPORTATION

COUNTY HIGHWAY 2 & COUNTY HIGHWAY 14
SCHEDULES OF QUANTITIES

SCALE: SHEET 2 OF 3 SHEETS STA. TO STA.

F.A.S. RTE.	SECTION	COUNTY	TOTAL SHEETS	SHEET NO.
2601	20-00102-00-PP	PIKE	32	6
CONTRACT NO. 93853				
ILLINOIS FED. AID PROJECT				

MODEL: Schedules23 (Sheet)
FILE NAME: Y:\5386 - CH 2 and CH 14 Reconstruction (Pike)\CADD\CADD Sheets\5386-shh-schedule.dgn

ENTRANCE AND SIDEROAD SCHEDULE				
STATION	SIDE	TYPE	40200800	40800050
			AGGREGATE SURFACE COURSE, TYPE B	INCIDENTAL HMA SURFACING
			TON	TON
CH 2				
15+19.50	RT	PE	1.9	1.4
16+39.70	LT	CE		4.2
17+84.70	RT	PE	1.9	1.4
17+84.70	LT	CE		4.2
18+22.40	LT	PE		2.7
20+38.90	RT	FE	1.4	1.1
20+95.70	LT	FE	2.9	1.9
22+83.90	LT	CE		6.2
25+75.10	RT	FE	1.4	1.1
28+01.10	LT	CE	3.8	2.5
28+47.80	RT	FE	15.8	9.6
32+12.20	RT	CE	3.8	2.5
46+10.50	RT	PE	3.8	2.5
440TH ST	LT	SR		6.8
60+89.10	RT	PE	3.2	2.1
74+07.67	RT	FE	1.3	1.0
78+80.50	RT	FE	1.4	1.1
93+32.80	LT	CE	3.8	2.5
448TH ST	RT	SR		5.9
107+60.80	RT	FE	1.4	1.1
450TH ST	LT	SR		8.3
110+72.20	RT	FE	3.2	2.1
120+75.60	LT	CE	5.6	3.5
123+12.30	LT	PE		6.2
455TH ST	RT	SR		6.8
139+67.30	LT	FE	1.9	1.4
161+11.50	LT	CE	5.6	3.5
162+03.10	RT	PE	7.9	4.9
163+16.00	RT	PE	2.5	1.7
168+29.60	LT	PE	3.8	2.5
172+69.30	LT	PE	3.2	2.1
174+33.70	LT	PE	2.5	1.7
177+21.80	LT	PE	3.2	2.1
179+02.30	RT	CE	4.8	3.0
184+36.90	RT	CE	7.9	4.9
186+73.40	LT	PE	1.3	1.0
187+27.10	RT	FE	2.5	1.7
QUARRY RD	RT	SR		9.6
WALNUT ST	LT	SR		5.9
193+94.56	RT	CE	2.9	1.9
198+85.26	RT	CE	2.9	1.9
199+59.26	RT	CE	3.8	2.5
470TH ST	RT	SR		8.3
CH 2 TOTALS			113.4	149.1
CH 14				
5+17.10	LT	CE	4.8	3.0
5+17.50	RT	FE	1.9	1.4
255TH AVE	RT	SR		7.1
17+23.80	LT	CE	3.2	2.1
19+10.10	LT	CE	1.9	1.4
25+10.30	LT	FE	2.5	1.7
25+13.90	RT	FE	2.5	1.7
25+89.90	LT	CE	2.5	1.7
33+40.10	RT	FE	3.2	2.1
40+52.80	RT	FE	1.9	1.4

ENTRANCE AND SIDEROAD SCHEDULE				
STATION	SIDE	TYPE	40200800	40800050
			AGGREGATE SURFACE COURSE, TYPE B	INCIDENTAL HMA SURFACING
			TON	TON
40+53.60	LT	FE	1.9	1.4
GOLDMAN SCHOOL RD	RT	SR		7.7
43+58.90	LT	FE		1.7
47+09.50	RT	FE	1.4	1.1
48+01.90	RT	PE	3.8	2.5
57+85.80	RT	PE	4.4	2.8
75+60.30	LT	PE	3.8	2.5
82+78.00	RT	FE	1.5	0.8
85+82.20	LT	FE	4.1	1.7
85+83.30	RT	FE	3.1	1.4
452ND ST	RT	SR		12.4
100+64.60	LT	FE	2.3	1.1
106+07.50	RT	PE	2.3	1.1
108+24.70	RT	PE	5.3	2.2
110+82.30	RT	PE	4.1	1.7
119+57.30	RT	FE	3.1	1.4
122+68.00	RT	FE	4.1	1.7
122+95.40	LT	CE	4.6	1.9
125+81.10	RT	FE	3.1	1.4
125+81.10	LT	CE	4.1	1.7
130+93.00	LT	FE	1.8	0.9
132+28.30	LT	FE	2.3	1.1
137+37.20	RT	FE	1.5	0.8
151+07.90	LT	FE	3.6	1.5
151+09.20	RT	FE	1.5	0.8
152+76.30	RT	PE	11.4	4.4
154+60.50	LT	FE	2.3	1.1
155+90.80	LT	CE	4.1	1.7
156+83.60	LT	CE	7.9	3.1
270TH AVE	LT	SR		13.4
163+85.80	LT	FE	2.3	1.1
172+77.70	LT	FE	2.1	1.0
175+34.70	RT	FE	2.3	1.1
186+04.20	LT	FE	1.5	0.8
275TH LN	RT	SR		10.9
189+78.10	LT	FE	3.1	1.4
191+90.40	LT	FE	1.5	0.8
193+93.40	LT	FE	1.5	0.8
202+44.20	RT	PE	3.1	1.4
202+47.70	LT	FE	2.3	1.1
208+72.50	RT	PE	3.1	1.4
212+83.60	RT	PE	6.1	2.5
215+79.30	RT	FE	3.1	1.4
280TH AVE	LT	SR		9.4
220+54.10	LT	FE	1.5	0.8
220+54.90	RT	FE	1.5	0.8
223+23.70	RT	FE	2.3	1.1
227+54.20	RT	FE	2.3	1.1
2833RD LN	RT	SR		10.9
233+28.90	LT	FE	4.1	1.7
233+44.40	RT	FE	3.1	1.4
237+88.80	RT	FE	2.3	1.1
238+10.20	LT	FE	2.3	1.1
285TH LN	RT	SR		10.9
245+93.50	RT	PE	5.1	2.1
251+97.40	LT	FE	1.5	0.8

ENTRANCE AND SIDEROAD SCHEDULE				
STATION	SIDE	TYPE	40200800	40800050
			AGGREGATE SURFACE COURSE, TYPE B	INCIDENTAL HMA SURFACING
			TON	TON
252+49.80	LT	FE	2.3	1.1
254+56.00	RT	FE	2.3	1.1
259+13.60	LT	FE	2.3	1.1
261+40.60	RT	FE	3.1	1.4
289TH AVE	LT	SR		13.4
BRIDGE OMISSION STA 266+62.35 TO STA 268+92.86				
290TH AVE	LT	SR		12.4
278+05.50	RT	FE	3.1	1.4
293RD AVE	RT	SR		13.4
289+47.30	LT	FE	3.6	1.5
296+42.00	RT	FE	1.5	0.8
296+43.10	LT	FE	3.1	1.4
309+81.50	RT	PE	7.1	2.8
311+65.90	RT	FE	3.1	1.4
312+60.70	RT	FE	3.1	1.4
313+53.40	LT	FE	3.1	1.4
317+20.10	LT	PE	5.1	2.1
300TH AVE	RT	SR		12.4
300TH AVE	LT	SR		12.4
323+83.90	LT	FE	2.3	1.1
327+53.30	RT	FE	3.1	1.4
330+11.70	LT	FE	3.1	1.4
331+51.10	RT	FE	3.1	1.4
336+72.70	RT	FE	5.1	2.1
336+72.90	LT	FE	2.3	1.1
349+99.90	LT	FE	2.3	1.1
355+48.90	RT	FE	5.1	2.1
358+21.80	RT	FE	3.1	1.4
RR OMISSION 358+64.55 TO STA 359+43.30				
369+10.60	RT	FE	2.3	1.1
373+49.80	LT	FE	3.1	1.4
CH 14 TOTALS			253.2	268.4
GRAND TOTALS			366.6	417.5
USE			367	418



Hutchison
Engineering, Inc.

USER NAME = HCoultas
PLOT DATE = 11/12/2025

DESIGNED - HRC
DRAWN - HRC
CHECKED - BMB
DATE - 10/10/2025

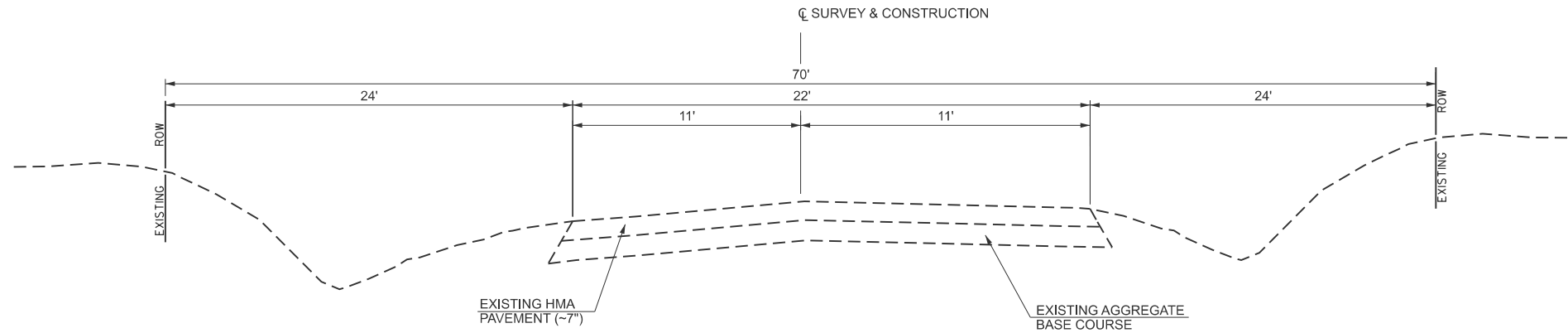
REVISED -
REVISED -
REVISED -
REVISED -

STATE OF ILLINOIS
DEPARTMENT OF TRANSPORTATION

COUNTY HIGHWAY 2 & COUNTY HIGHWAY 14
SCHEDULES OF QUANTITIES

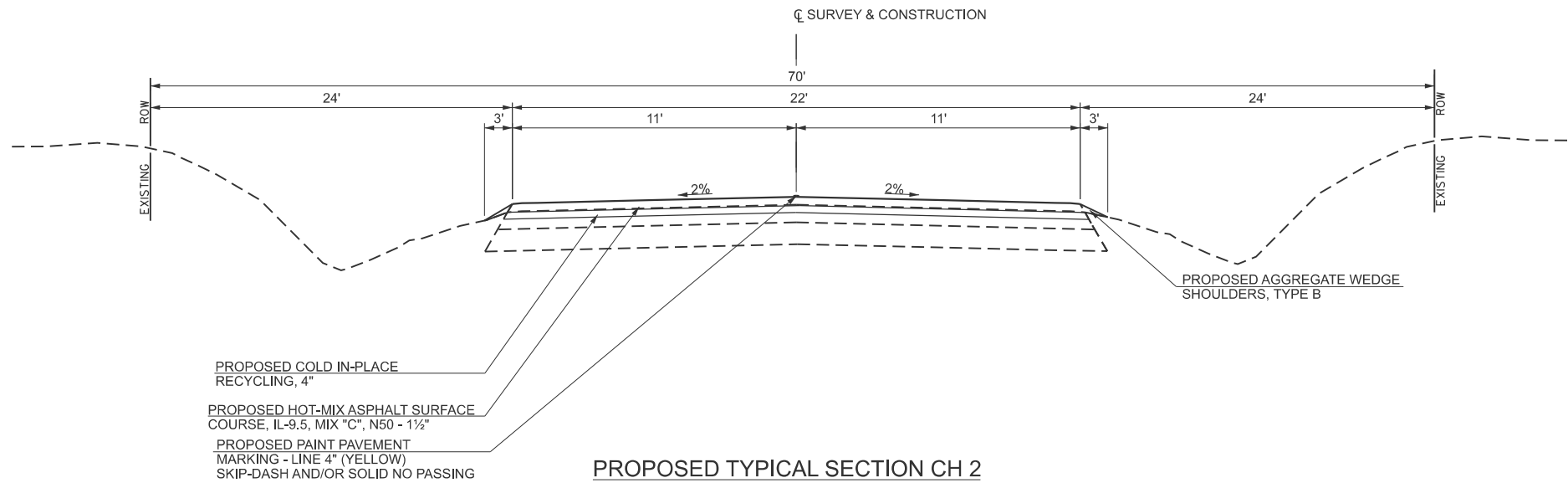
SCALE: SHEET 3 OF 3 SHEETS STA. TO STA.

F.A.S. RTE.	SECTION	COUNTY	TOTAL SHEETS	SHEET NO.
2601	20-00102-00-PP	PIKE	32	7
CONTRACT NO. 93853				
ILLINOIS FED. AID PROJECT				



EXISTING TYPICAL SECTION CH 2

STATION 14+00.00 TO 201+11.23



PROPOSED TYPICAL SECTION CH 2

STATION 14+00.00 TO 201+11.23

MODEL: Default.dgn
FILE NAME: V5386 - CH 2 and CH 14 Reconstruction (Pike) CADD/CADD Sheets/5386-CH 2.ppt2.dgn
2026



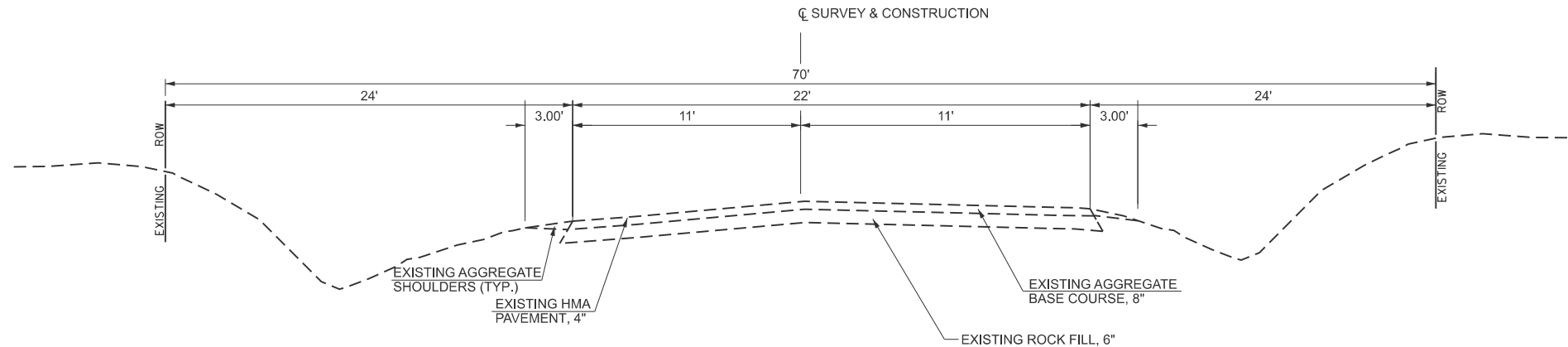
USER NAME = HCoultas	DESIGNED - REH	REVISED -
	DRAWN - REH	REVISED -
PLOT SCALE = \$SCALE\$	CHECKED - BMB	REVISED -
PLOT DATE = 11/12/2025	DATE - 07/2024	REVISED -

PIKE COUNTY
HIGHWAY DEPARTMENT

CH 2 RESURFACING & CH 14 RECONSTRUCTION
TYPICAL SECTION

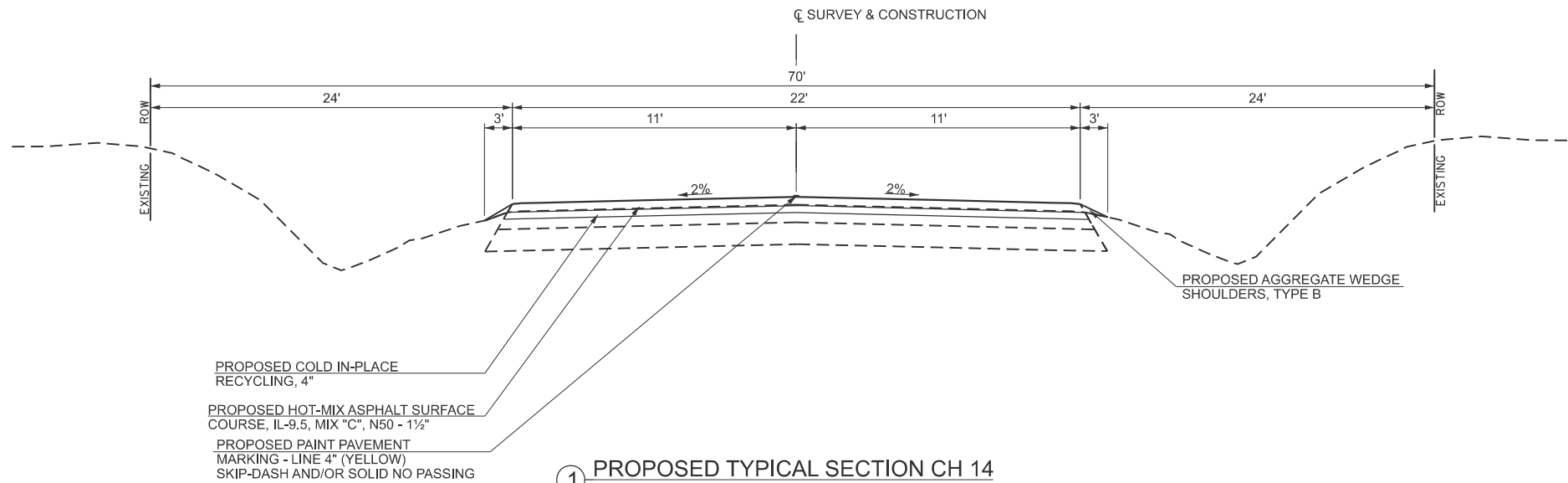
SCALE: N/A SHEET 1 OF 3 SHEETS

F.A.S. RTE.	SECTION	COUNTY	TOTAL SHEETS	SHEET NO.
602	20-00102-00-PP	PIKE	32	8
CONTRACT NO. 93853				
		ILLINOIS	JOB NO. -	



EXISTING TYPICAL SECTION CH 14

STATION 4+75.00 TO 80+60.00



1 PROPOSED TYPICAL SECTION CH 14

STATION 4+75.00 TO 80+60.00

MODEL: Default.dgn
FILE NAME: V5386 - CH 2 and CH 14 Reconstruction (Pike) CADD/CADD Sheets/5386-CH 14.dgn
2026



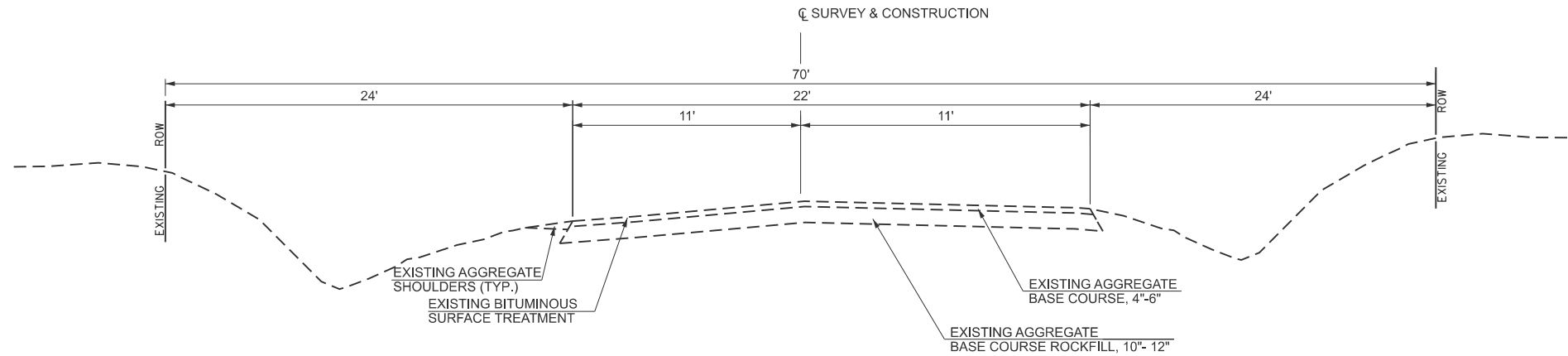
USER NAME = HCoultas	DESIGNED - REH	REVISED -
	DRAWN - REH	REVISED -
PLOT SCALE = \$SCALE\$	CHECKED - BMB	REVISED -
PLOT DATE = 11/12/2025	DATE - 07/2024	REVISED -

PIKE COUNTY
HIGHWAY DEPARTMENT

CH 2 RESURFACING & CH 14 RECONSTRUCTION
TYPICAL SECTION

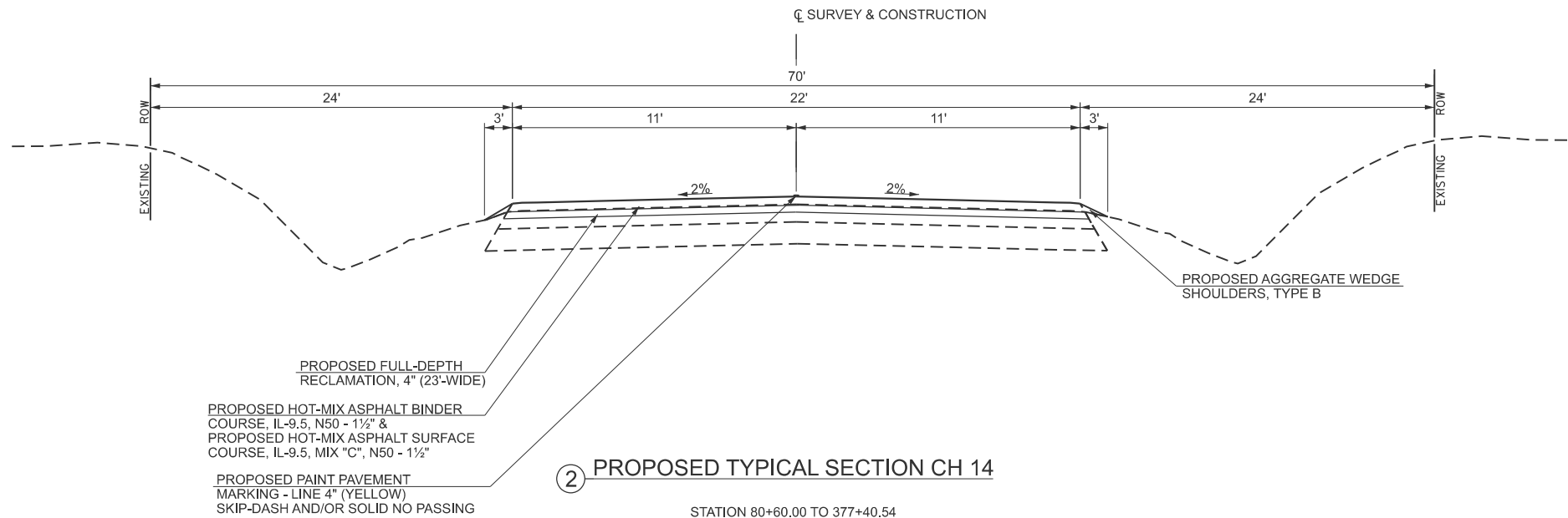
SCALE: N/A SHEET 2 OF 3 SHEETS

F.A.S. RTE.	SECTION	COUNTY	TOTAL SHEETS	SHEET NO.
2601	20-00102-00-PP	PIKE	32	9
CONTRACT NO. 93853				
		ILLINOIS	JOB NO. -	



EXISTING TYPICAL SECTION CH 14

STATION 80+60.00 TO 377+40.54



2 PROPOSED TYPICAL SECTION CH 14

STATION 80+60.00 TO 377+40.54

MODEL: Default.dgn
FILE NAME: V5386 - CH 2 and CH 14 Reconstruction (Pike) CADD/CADD Sheets (5386-CH 2).dgn
2026



USER NAME = HCoultas	DESIGNED - REH	REVISED -
	DRAWN - REH	REVISED -
PLOT SCALE = \$SCALE\$	CHECKED - BMB	REVISED -
PLOT DATE = 11/12/2025	DATE - 07/2024	REVISED -

PIKE COUNTY
HIGHWAY DEPARTMENT

CH 2 RESURFACING & CH 14 RECONSTRUCTION
TYPICAL SECTION

SCALE: N/A SHEET 3 OF 3 SHEETS

F.A.S. RTE.	SECTION	COUNTY	TOTAL SHEETS	SHEET NO.
2601	20-00102-00-PP	PIKE	32	10
CONTRACT NO. 93853				
		ILLINOIS	JOB NO. -	



MODEL: CH_DBLPLAN.01
FILE NAME: V:\5386 - CH 2 and CH 14 Reconstruction (Pike)\CADD\CADD Sheets\5386-shl-plan CH2.01.dgn

 <div>Hutchison Engineering, Inc. <small>JOB# 5386</small></div>	USER NAME = HCoultas	DESIGNED - BMB	REVISED -	<div>STATE OF ILLINOIS</div> <div>DEPARTMENT OF TRANSPORTATION</div>	<div>COUNTY HIGHWAY 2 & COUNTY HIGHWAY 14</div> <div>DOUBLE PLAN SHEET</div>			F.A.S. RTE.	SECTION	COUNTY	TOTAL SHEETS	SHEET NO.
		DRAWN - JCW	REVISED -					602	20-00102-00-PP	PIKE	32	11
	PLOT SCALE = \$SCALE\$	CHECKED - BMB	REVISED -					CONTRACT NO. 93853				
	PLOT DATE = 11/12/2025	DATE - 6-26-2024	REVISED -					SCALE: 1"=50' SHEET 1 OF 7 SHEETS STA. 0+00.00 TO STA. 30+00.00				
ILLINOIS FED. AID PROJECT												

MODEL: CH_DBLPLAN.03
FILE NAME: V:\5386 - CH 2 and CH 14 Reconstruction (Pike)\CADD\CADD Sheets\5386-shr-plan_CH2.02.dgn
2026



USER NAME	= HCoultas
PLOT SCALE	= \$\$CALE\$
PLOT DATE	= 11/12/2025

DESIGNED -	BMB
DRAWN -	JCW
CHECKED -	BMB
DATE -	6-26-2024

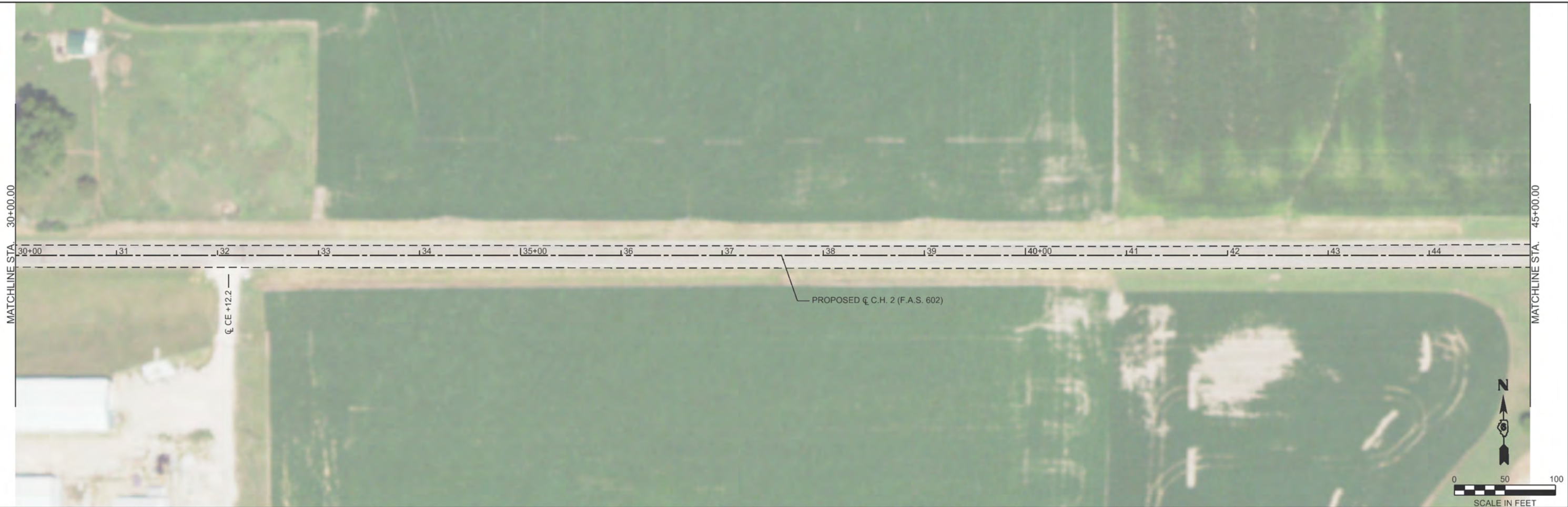
REVISED -	
REVISED -	
REVISED -	
REVISED -	

STATE OF ILLINOIS
DEPARTMENT OF TRANSPORTATION

COUNTY HIGHWAY 2 & COUNTY HIGHWAY 14
DOUBLE PLAN SHEET

SCALE: 1"=50'	SHEET 2	OF 7	SHEETS	STA. 30+00.00	TO STA. 60+00.00
---------------	---------	------	--------	---------------	------------------

F.A.S. RTE.	SECTION	COUNTY	TOTAL SHEETS	SHEET NO.
602	20-00102-00-PP	PIKE	32	12
CONTRACT NO. 93853				
ILLINOIS FED. AID PROJECT				



MODEL: CH_DBLPLAN.05
FILE NAME: V:\5386-CH 2 and CH 14 Reconstruction (Pike)\CADD\CADD Sheets\5386-sh1-plan_CH2.03.dgn
2026



USER NAME	= HCoultas
PLOT SCALE	= \$\$SCALE\$
PLOT DATE	= 11/13/2025

DESIGNED -	BMB
DRAWN -	JCW
CHECKED -	BMB
DATE -	6-26-2024

REVISED -	
REVISED -	
REVISED -	
REVISED -	

STATE OF ILLINOIS
DEPARTMENT OF TRANSPORTATION

COUNTY HIGHWAY 2 & COUNTY HIGHWAY 14
DOUBLE PLAN SHEET

SCALE: 1"=50' SHEET 3 OF 7 SHEETS STA. 60+00.00 TO STA. 90+00.00

F.A.S. RTE.	SECTION	COUNTY	TOTAL SHEETS	SHEET NO.
602	20-00102-00-PP	PIKE	32	13
CONTRACT NO. 93853				
ILLINOIS FED. AID PROJECT				



MODEL: CH_DBLPLAN.07
FILE NAME: V:\5386 - CH 2 and CH 14 Reconstruction (Pike)\CADD\CADD Sheets\5386-shh-plan_CH2.04.dgn



USER NAME	= HCoultas
PLOT SCALE	= \$\$SCALE\$
PLOT DATE	= 11/12/2025

DESIGNED -	BMB
DRAWN -	JCW
CHECKED -	BMB
DATE -	6-26-2024

REVISED -	
REVISED -	
REVISED -	
REVISED -	

STATE OF ILLINOIS
DEPARTMENT OF TRANSPORTATION

COUNTY HIGHWAY 2 & COUNTY HIGHWAY 14
DOUBLE PLAN SHEET

SCALE: 1"=50' SHEET 4 OF 7 SHEETS STA. 90+00.00 TO STA. 120+00.00

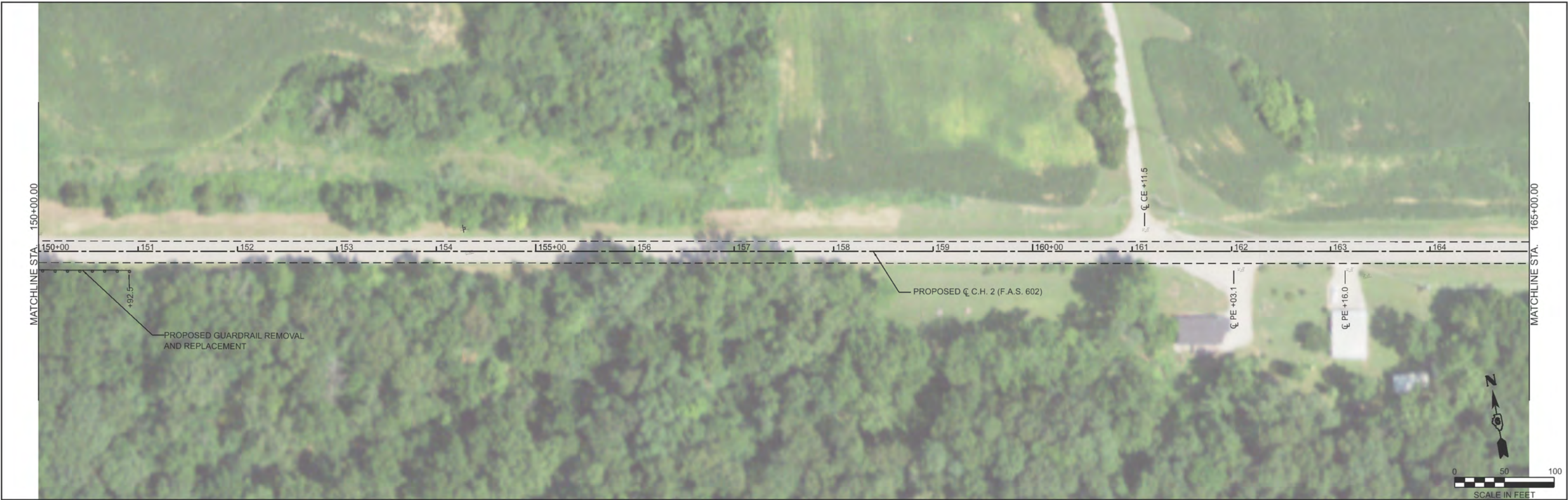
F.A.S. RTE.	SECTION	COUNTY	TOTAL SHEETS	SHEET NO.
602	20-00102-00-PP	PIKE	32	14
CONTRACT NO. 93853				
ILLINOIS FED. AID PROJECT				





MODEL: CH_DBLPLAN.09
FILE NAME: V:\5386-CH 2 and CH 14 Reconstruction (Pike)\CADD\CADD Sheets\5386-sh1-plan_CH2.05.dgn
2026

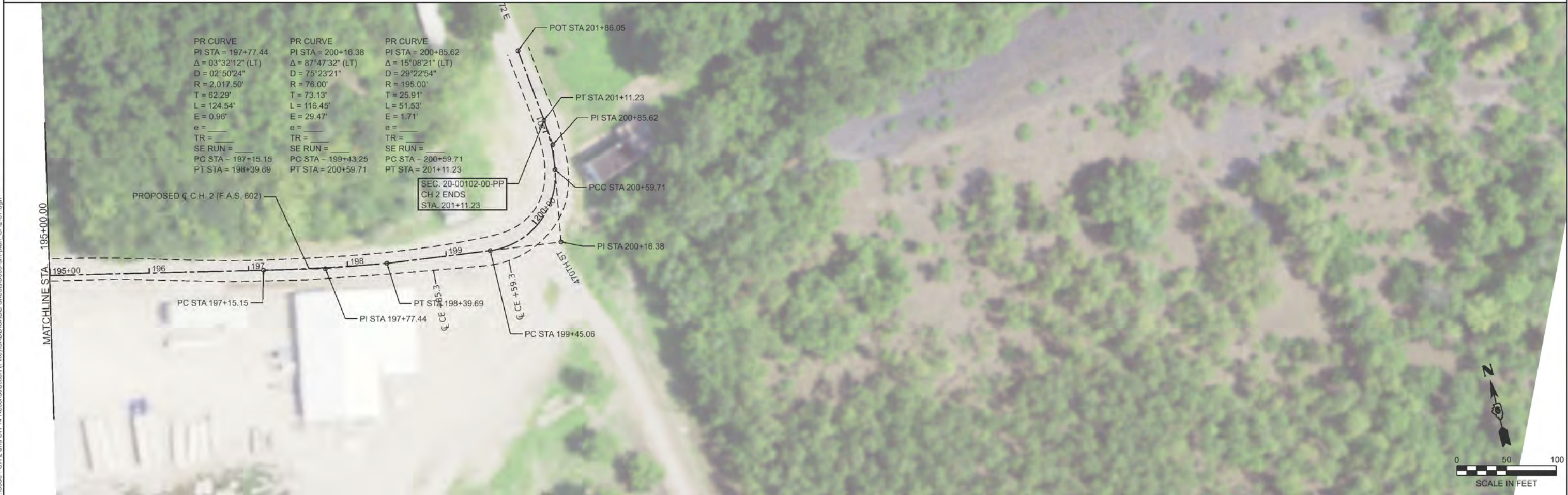
 <div>Hutchison Engineering, Inc. <small>JOB# 5386</small></div>	USER NAME = HCoultas	DESIGNED - BMB	REVISED -	STATE OF ILLINOIS DEPARTMENT OF TRANSPORTATION	COUNTY HIGHWAY 2 & COUNTY HIGHWAY 14 DOUBLE PLAN SHEET				F.A.S. RTE.	SECTION	COUNTY	TOTAL SHEETS	SHEET NO.
	PLOT SCALE = \$SCALE\$	DRAWN - JCW	REVISED -						602	20-00102-00-PP	PIKE	32	15
	PLOT DATE = 11/13/2025	CHECKED - BMB	REVISED -		CONTRACT NO. 93853								
	DATE = 6-26-2024	REVISED -	ILLINOIS FED. AID PROJECT										
SCALE: 1"=50'					SHEET 5	OF 7	SHEETS	STA. 120+00.00	TO STA. 150+00.00				



PR CURVE
PI STA = 176+29.79
 $\Delta = 21^\circ 26' 16''$ (LT)
D = 02°25'40"
R = 2,360.00'
T = 446.73'
L = 883.02'
E = 41.91'
e = _____
TR = _____
SE RUN = _____
PC STA = 171+83.05
PT STA = 180+66.07

MODEL: CH_DBLPLAN.11
FILE NAME: V:\5386 - CH 2 and CH 14 Reconstruction (Pike)\CADD\CADD Sheets\5386-shl-plan CH2.06.dgn

	USER NAME = HCoultas		DESIGNED - BMB	REVISED -	STATE OF ILLINOIS DEPARTMENT OF TRANSPORTATION	COUNTY HIGHWAY 2 & COUNTY HIGHWAY 14 DOUBLE PLAN SHEET		F.A.S. RTE. 602	SECTION 20-00102-00-PP	COUNTY PIKE	TOTAL SHEETS 32	SHEET NO. 16
	DRAWN - JCW		CHECKED - BMB	REVISED -		SCALE: 1"=50'		SHEET 6 OF 7 SHEETS		STA. 150+00.00 TO STA. 180+00.00		CONTRACT NO. 93853
	PLOT SCALE = \$SCALE\$		DATE - 6-26-2024	REVISED -								ILLINOIS FED. AID PROJECT
	PLOT DATE = 11/13/2025											



MODEL: CH_DBLPLAN.dgn
FILE NAME: V:\5386 - CH 2 and CH 14 Reconstruction (Pike)\CADD\CADD Sheets\5386-shh-plan CH2-07.dgn

<div><div><div>Hutchison</div><div>Engineering, Inc.</div><div>JOB# 5386</div></div></div>	USER NAME = HCoitas	DESIGNED = BMB	REVISED =	STATE OF ILLINOIS DEPARTMENT OF TRANSPORTATION	COUNTY HIGHWAY 2 & COUNTY HIGHWAY 14 DOUBLE PLAN SHEET				F.A.S. RTE.	SECTION	COUNTY	TOTAL SHEETS	SHEET NO.
	DRAWN = JCW	REVIS	REVISED =						602	20-00102-00-PP	PIKE	32	17
	PLOT SCALE = \$SCALE\$	CHECKED = BMB	REVISED =		CONTRACT NO. 93853								
	PLOT DATE = 11/13/2025	DATE = 6-26-2024	REVISED =		SCALE: 1"=50' SHEET 7 OF 7 SHEETS STA. 180+00.00 TO STA. 210+00.00								
					ILLINOIS FED. AID PROJECT								



MATCHLINE STA. 19+00.00



MATCHLINE STA. 34+00.00

MODEL: CH14_DBLPLAN-01
FILE NAME: V:\5386 - CH 2 and CH 14 Reconstruction (Pike)\CADD\CADD Sheets\5386-shl-plan CH14-01.dgn
2026



Hutchison
Engineering, Inc.

USER NAME	= HCoultas	DESIGNED -	BMB	REVISED -	
		DRAWN -	JCW	REVISED -	
		CHECKED -	BMB	REVISED -	
PLOT DATE	= 11/13/2025	DATE	= 6-26-2024	REVISED -	

STATE OF ILLINOIS
DEPARTMENT OF TRANSPORTATION

COUNTY HIGHWAY 2 & COUNTY HIGHWAY 14
DOUBLE PLAN SHEET

SCALE: 1"=50' SHEET 1 OF 13 SHEETS STA. 4+00.00 TO STA. 34+00.00

F.A.S. RTE.	SECTION	COUNTY	TOTAL SHEETS	SHEET NO.
2601	20-00102-00-PP	PIKE	32	18
CONTRACT NO. 93853				
ILLINOIS FED. AID PROJECT				



PR CURVE
PI STA = 45+59.88
 $\Delta = 02^{\circ}06'51''$ (LT)
D = 00°12'58"
R = 26,500.00'
T = 488.97'
L = 977.83'
E = 4.51'
e = _____
TR = _____
SE RUN = _____
PC STA = 40+70.91
PT STA = 50+48.73



PR CURVE
PI STA = 52+31.05
 $\Delta = 18^{\circ}29'29''$ (LT)
D = 05°06'57"
R = 1,120.00'
T = 182.32'
L = 361.47'
E = 14.74'
e = _____
TR = _____
SE RUN = _____
PC STA = 50+48.73
PT STA = 54+10.20

MODEL: CH14.DBL\PLAN-03.dgn
FILE NAME: V:\5386 - CH 2 and CH 14 Reconstruction (Pike)\CADD\CADD Sheets\CH14.DBL\PLAN-03.dgn



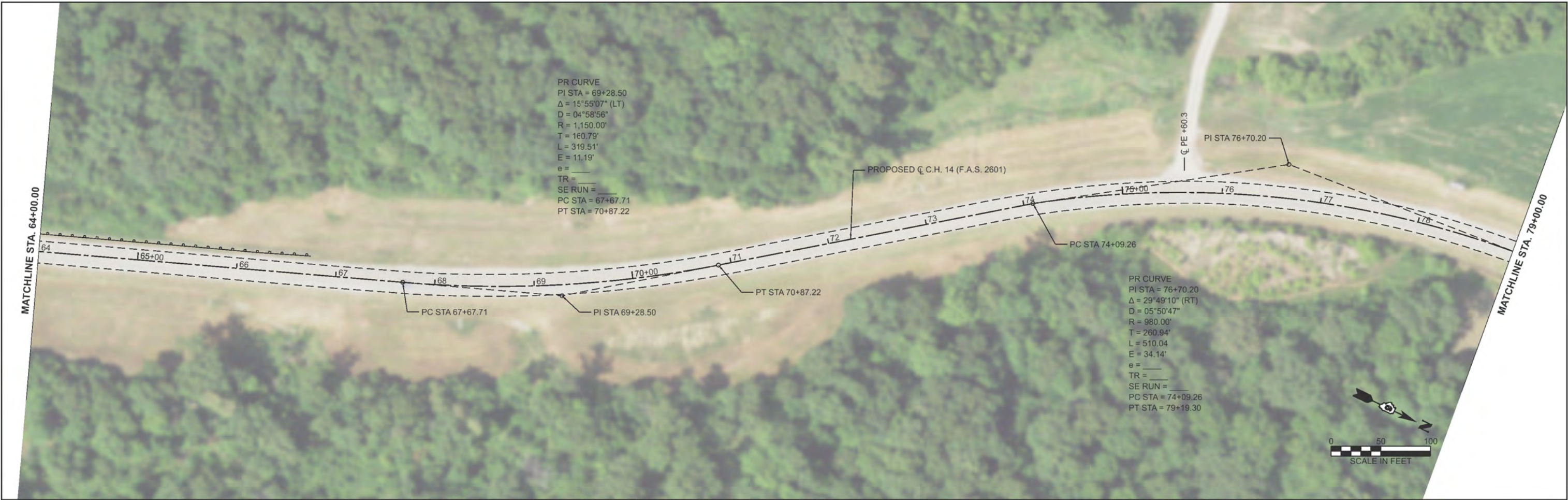
USER NAME	= CThomas	DESIGNED -	BMB	REVISED -	
		DRAWN -	JCW	REVISED -	
		CHECKED -	BMB	REVISED -	
PLOT DATE	= 10/7/2025	DATE	= 6-26-2024	REVISED -	

STATE OF ILLINOIS
DEPARTMENT OF TRANSPORTATION

COUNTY HIGHWAY 2 & COUNTY HIGHWAY 14
DOUBLE PLAN SHEET

SCALE: 1"=50' SHEET 2 OF 13 SHEETS STA. 34+00.00 TO STA. 64+00.00

F.A.S. RTE.	SECTION	COUNTY	TOTAL SHEETS	SHEET NO.
2601	20-00102-00-PP	PIKE	32	19
CONTRACT NO. 93853				
ILLINOIS FED. AID PROJECT				



MODEL: CH14.DBL\PLAN-05
FILE NAME: V:\5386-CH2 and CH 14 Reconstruction (Pike)\CADD\CADD Sheets\CH14.DBL\PLAN-05.dgn

	USER NAME = CThomas		DESIGNED - BMB	REVISED -	STATE OF ILLINOIS DEPARTMENT OF TRANSPORTATION	COUNTY HIGHWAY 2 & COUNTY HIGHWAY 14 DOUBLE PLAN SHEET			F.A.S. RTE.	SECTION	COUNTY	TOTAL SHEETS	SHEET NO.
			DRAWN - JCW	REVISED -					2601	20-00102-00-PP	PIKE	32	20
			CHECKED - BMB	REVISED -		CONTRACT NO. 93853							
	PLOT DATE = 10/7/2025		DATE - 6-26-2024	REVISED -		SCALE: 1"=50'	SHEET 3	OF 13 SHEETS	STA. 64+00.00	TO STA. 94+00.00	ILLINOIS FED. AID PROJECT		



MODEL: CH14.DBL\PLAN-07.dgn
FILE NAME: V:\5386 - CH 2 and CH 14 Reconstruction (Pike)\CADD\CADD Sheets\CH14.DBL\PLAN-07.dgn



Hutchison

Engineering, Inc.

JOB # 5386

USER NAME = CThomas

DESIGNED - BMB

DRAWN - JCW

CHECKED - BMB

REVISED -

REVISED -

REVISED -

REVISED -

PLOT DATE = 10/7/2025

DATE - 4-26-24

REVISED -

STATE OF ILLINOIS

DEPARTMENT OF TRANSPORTATION

COUNTY HIGHWAY 2 & COUNTY HIGHWAY 14

DOUBLE PLAN SHEET

F.A.S. RTE.

SECTION

COUNTY

TOTAL SHEETS

SHEET NO.

2601

20-00102-00-PP

PIKE

32

21

CONTRACT NO. 93853

ILLINOIS FED. AID PROJECT

SCALE: 1"=50'

SHEET 4

OF 13 SHEETS

STA. 94+00.00

TO STA. 124+00.00



MODEL: CH14_DBLPLAN-11
FILE NAME: V:\5386 - CH 2 and CH 14 Reconstruction (Pike)\CADD\CADD Sheets\CH14_DBLPLAN-11.dgn
2026 JOB# 5386



Hutchison
Engineering, Inc.

USER NAME = CThomas
PLOT DATE = 10/7/2025

DESIGNED -	BMB	REVISED -	
DRAWN -	JCW	REVISED -	
CHECKED -	BMB	REVISED -	
DATE -		REVISED -	

STATE OF ILLINOIS
DEPARTMENT OF TRANSPORTATION

COUNTY HIGHWAY 2 & COUNTY HIGHWAY 14
DOUBLE PLAN SHEET

SCALE: 1"=50' SHEET 6 OF 13 SHEETS STA. 154+00.00 TO STA. 184+00.00

F.A.S. RTE.	SECTION	COUNTY	TOTAL SHEETS	SHEET NO.
2601	20-00102-00-PP	PIKE	32	23
CONTRACT NO. 93853				
ILLINOIS FED. AID PROJECT				

MODEL: CH14_DBLP.LN-13
FILE NAME: V:\5386 - CH 2 and CH 14 Reconstruction (Pike)\CADD\CADD Sheets\CH14_DBLP.LN-13.dgn



Hutchison
Engineering, Inc.

USER NAME = CThomas
PLOT DATE = 10/7/2025

DESIGNED - BMB
DRAWN - JCW
CHECKED - BMB
DATE - 4-26-24

REVISED -
REVISED -
REVISED -
REVISED -

**STATE OF ILLINOIS
DEPARTMENT OF TRANSPORTATION**

**COUNTY HIGHWAY 2 & COUNTY HIGHWAY 14
DOUBLE PLAN SHEET**

SCALE: 1"=50'

SHEET 7 OF 13 SHEETS STA. 184+00.00 TO STA. 214+00.00

F.A.S. RTE.	SECTION	COUNTY	TOTAL SHEETS	SHEET NO.
2601	20-00102-00-PP	PIKE	32	24
CONTRACT NO. 93853				
ILLINOIS FED. AID PROJECT				

MATCHLINE STA. 184+00.00



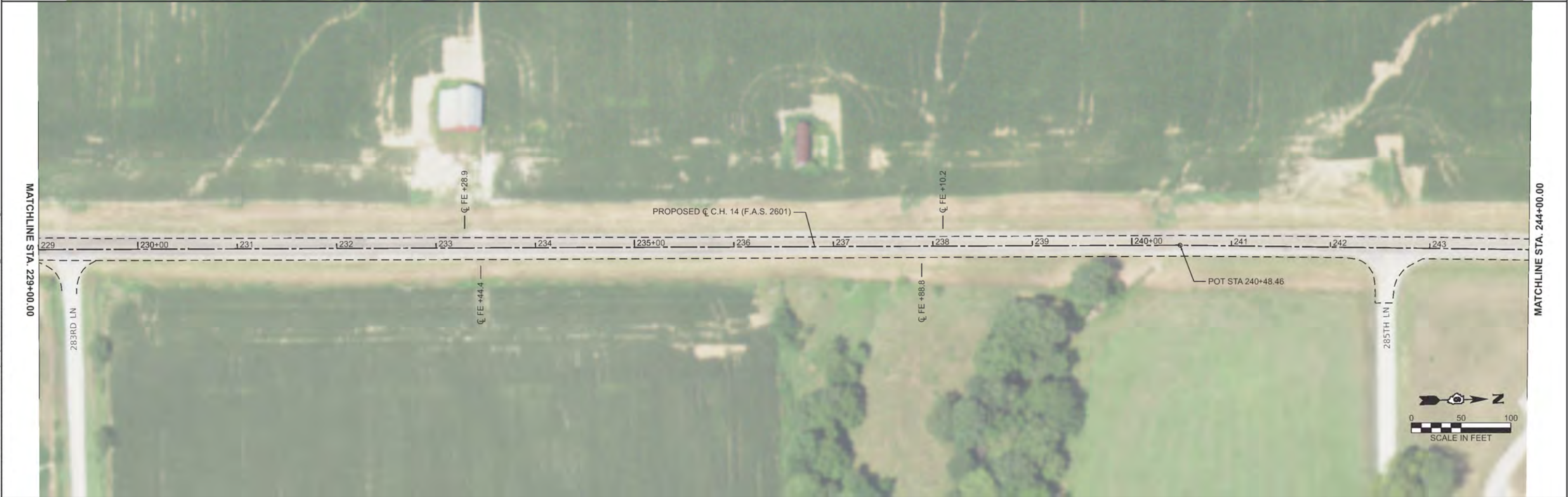
MATCHLINE STA. 199+00.00

MATCHLINE STA. 199+00.00



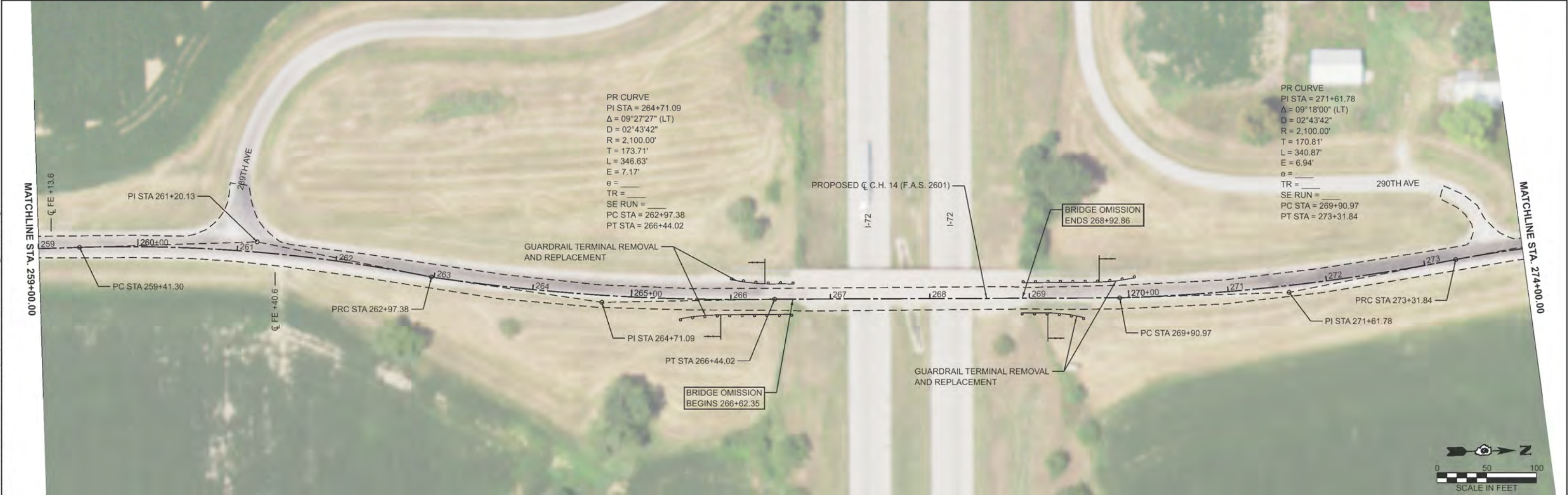
MATCHLINE STA. 214+00.00

PR CURVE
PI STA = 209+40.62
 $\Delta = 07^{\circ}12'37''$ (LT)
 $D = 02^{\circ}17'31''$
 $R = 2,500.00'$
 $T = 157.51'$
 $L = 314.61'$
 $E = 4.96'$
 $e =$
 $TR =$
 $SE RUN =$
 $PC STA = 207+83.11$
 $PT STA = 210+97.72$



MODEL: CH14.DBLPLN-15
FILE NAME: Y:\5386-CH 2 and CH 14 Reconstruction (Pike)\CADD\CADD Sheets\CH14_DBLPLN-15.dgn
2026

 <div>Hutchison Engineering, Inc. <small>JOB# 5386</small></div>	USER NAME = CThomas	DESIGNED - BMB	REVISED -	STATE OF ILLINOIS DEPARTMENT OF TRANSPORTATION	COUNTY HIGHWAY 2 & COUNTY HIGHWAY 14 DOUBLE PLAN SHEET				F.A.S. RTE.	SECTION	COUNTY	TOTAL SHEETS	SHEET NO.
		DRAWN - JCW	REVISED -						2601	20-00102-00-PP	PIKE	32	25
		CHECKED - BMB	REVISED -						CONTRACT NO. 93853				
	PLOT DATE = 10/7/2025	DATE - 4-26-24	REVISED -		SCALE: 1"=50'	SHEET 8	OF 13 SHEETS	STA. 214+00.00	TO STA. 244+00.00	ILLINOIS FED. AID PROJECT			



MODEL: CH14.DBLIN-17
FILE NAME: V:\5386 - CH 2 and CH 14 Reconstruction (Pike)\CADD\CADD Sheets\CH14.DBLIN-17.dgn

	USER NAME = CThomas		DESIGNED - BMB	REVISED -	STATE OF ILLINOIS DEPARTMENT OF TRANSPORTATION	COUNTY HIGHWAY 2 & COUNTY HIGHWAY 14 DOUBLE PLAN SHEET		F.A.S. RTE.	SECTION	COUNTY	TOTAL SHEETS	SHEET NO.
			DRAWN - JCW	REVISED -				2601	20-00102-00-PP	PIKE	32	26
			CHECKED - BMB	REVISED -				CONTRACT NO. 93853				
	PLOT DATE = 10/7/2025		DATE - 6-26-2024	REVISED -		SCALE: 1"=50'		ILLINOIS FED. AID PROJECT				
					SHEET 9 OF 13 SHEETS		STA. 244+00.00 TO STA. 274+00.00					



MODEL: CH14.DBLP.LN-19
FILE NAME: V:\5386 - CH 2 and CH 14 Reconstruction (Pike)\CADD\CADD Sheets\CH14.DBLP.LN-19.dgn
2026

2026

HEI

Hutchison
Engineering, Inc.

JOB# 5386

USER NAME = CThomas

DESIGNED - BMB

DRAWN - JCW

CHECKED - BMB

PLOT DATE = 10/7/2025

DESIGNED - BMB

REVISED -

DRAWN - JCW

REVISED -

CHECKED - BMB

REVISED -

DATE - 4-26-24

REVISED -

STATE OF ILLINOIS
DEPARTMENT OF TRANSPORTATION

COUNTY HIGHWAY 2 & COUNTY HIGHWAY 14
DOUBLE PLAN SHEET

SCALE: 1"=50'

SHEET 10 OF 13 SHEETS

STA. 274+00.00 TO STA. 304+00.00

F.A.S. RTE.

SECTION

COUNTY

TOTAL SHEETS

SHEET NO.

2601

20-00102-00-PP

PIKE

32

27

CONTRACT NO. 93853

ILLINOIS FED. AID PROJECT

MODEL: CH14_DBLP.N-21
FILE NAME: V:\5386 - CH 2 and CH 14 Reconstruction (Pike)\CADD\CADD Sheets\CH14_DBLP.N-21.dgn
2026



USER NAME	= CThomas
DESIGNED	- BMB
DRAWN	- JCW
CHECKED	- BMB
DATE	- 4-26-24
PLOT DATE	= 10/7/2025

REVISED	-
REVISED	-
REVISED	-
REVISED	-

STATE OF ILLINOIS
DEPARTMENT OF TRANSPORTATION

COUNTY HIGHWAY 2 & COUNTY HIGHWAY 14
DOUBLE PLAN SHEET

SCALE: 1"=50' SHEET 11 OF 13 SHEETS STA. 304+00.00 TO STA. 334+00.00

F.A.S. RTE.	SECTION	COUNTY	TOTAL SHEETS	SHEET NO.
2601	20-00102-00-PP	PIKE	32	28
CONTRACT NO. 93853				
ILLINOIS FED. AID PROJECT				

MATCHLINE STA. 304+00.00

MATCHLINE STA. 319+00.00

MATCHLINE STA. 319+00.00

MATCHLINE STA. 334+00.00



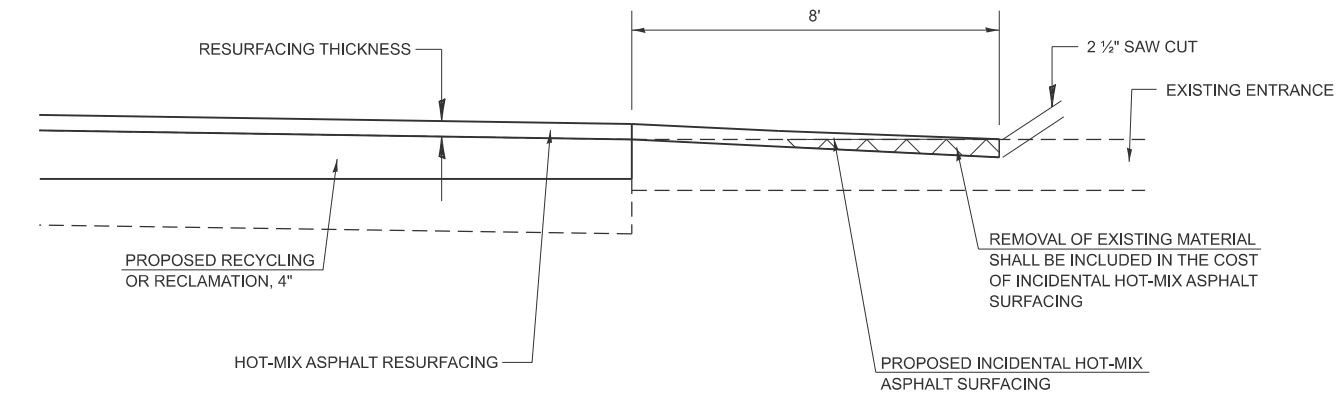
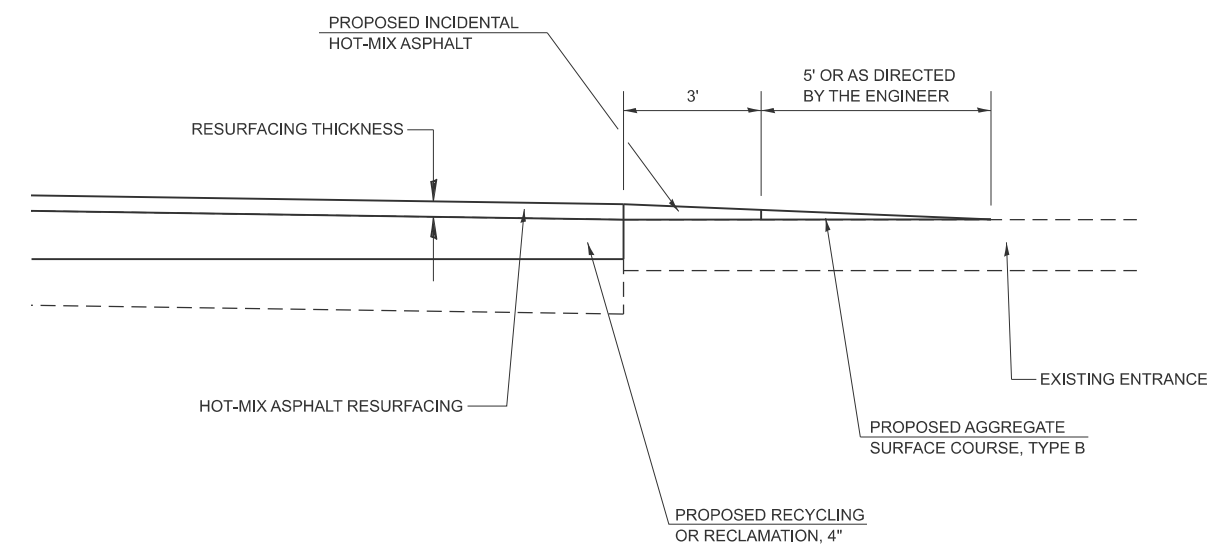
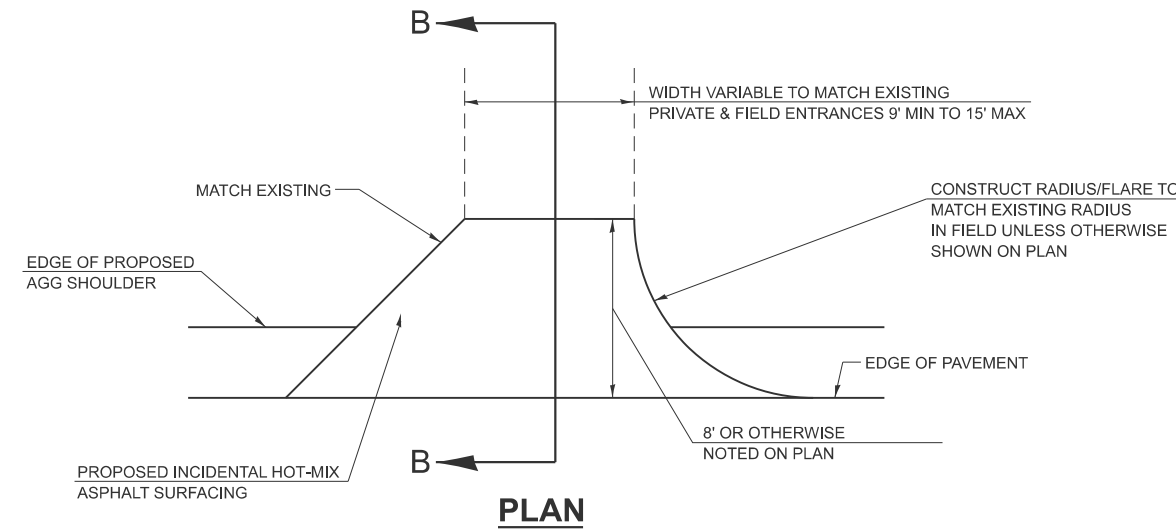
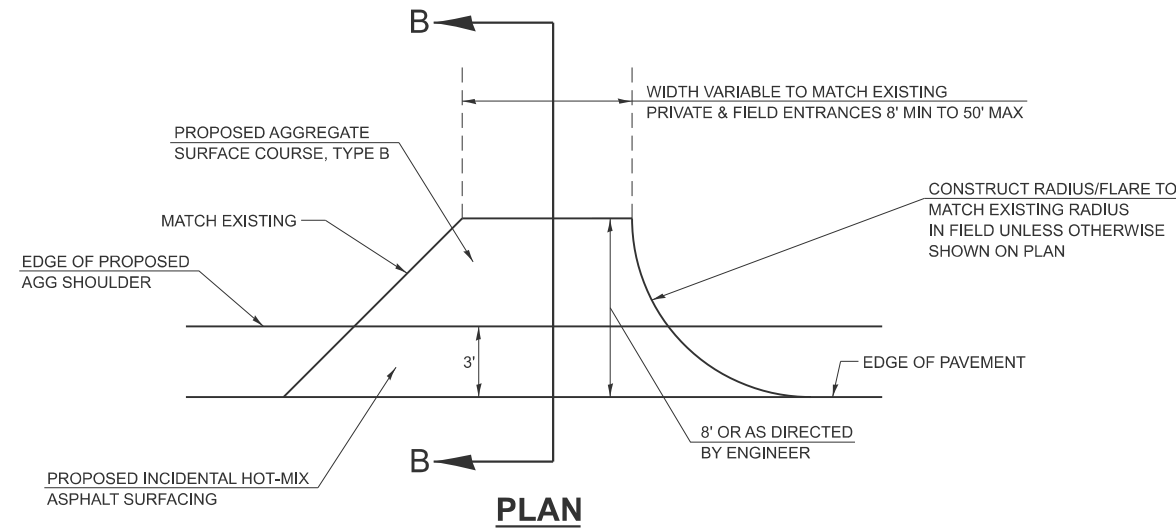
MODEL: CH14_DBLPLAN-23
FILE NAME: V:\5386 - CH 2 and CH 14 Reconstruction (Pike)\CADD\CADD Sheets\CH14_DBLPLAN-23.dgn
2026

 <div>Hutchison Engineering, Inc. <small>JOB# 5386</small></div>	USER NAME = CThomas	DESIGNED - BMB	REVISED -	STATE OF ILLINOIS DEPARTMENT OF TRANSPORTATION	COUNTY HIGHWAY 2 & COUNTY HIGHWAY 14 DOUBLE PLAN SHEET				F.A.S. RTE.	SECTION	COUNTY	TOTAL SHEETS	SHEET NO.
		DRAWN - JCW	REVISED -						2601	20-00102-00-PP	PIKE	32	29
		CHECKED - BMB	REVISED -						CONTRACT NO. 93853				
	PLOT DATE = 10/7/2025	DATE - 6-26-24	REVISED -						SCALE: 1"=50' SHEET 12 OF 13 SHEETS STA. 334+00.00 TO STA. 364+00.00				
					ILLINOIS FED. AID PROJECT								



MODEL: CH14_DBLPLN-25
FILE NAME: V:\5386 - CH 2 and CH 14 Reconstruction (Pike)\CADD\CADD Sheets\CH14_DBLPLN-25.dgn

<div><div><div>HEI</div><div>Hutchison Engineering, Inc.</div></div><div>2026JOB # 5386</div></div>	USER NAME = CThomas		DESIGNED - BMB	REVISED -	STATE OF ILLINOIS DEPARTMENT OF TRANSPORTATION	COUNTY HIGHWAY 2 & COUNTY HIGHWAY 14 DOUBLE PLAN SHEET						F.A.S. RTE.	SECTION	COUNTY	TOTAL SHEETS	SHEET NO.
			DRAWN - JCW	REVISED -		2601	20-00102-00-PP	PIKE	32	30						
			CHECKED - BMB	REVISED -		CONTRACT NO. 93853										
	PLOT DATE = 10/7/2025		DATE - 6-26-24	REVISED -		ILLINOIS FED. AID PROJECT										
						SCALE: 1"=50'	SHEET 13	OF 13	SHEETS	STA. 364+00.00	TO STA. 379+00.00					



SECTION B-B
AGGREGATE ENTRANCE TAPERS

SECTION B-B
HOT MIX-ASPHALT ENTRANCE TAPERS

MODEL: Details-01 [Sheet]
FILE NAME: Y:\5386-CH 2 and CH 14 Reconstruction (Pike)\CADD\CADD Sheets\5386-sht-details.dgn



Hutchison
Engineering, Inc.

USER NAME = HCOultas	DESIGNED -	REVISED -
	DRAWN -	REVISED -
	CHECKED -	REVISED -
PLOT DATE = 11/13/2025	DATE -	REVISED -

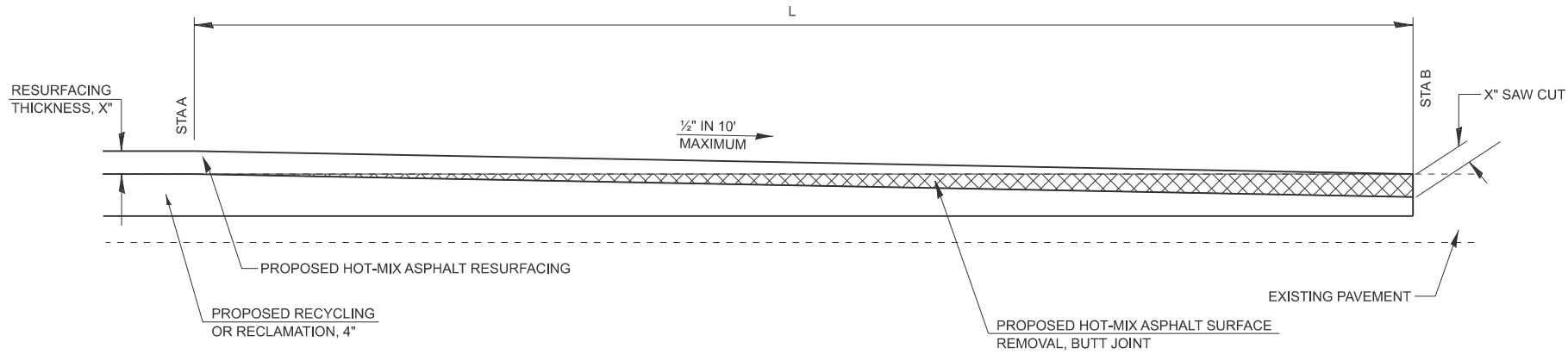
STATE OF ILLINOIS
DEPARTMENT OF TRANSPORTATION

COUNTY HIGHWAY 2 & COUNTY HIGHWAY 14
DETAILS

SCALE: SHEET 1 OF 2 SHEETS STA. TO STA.

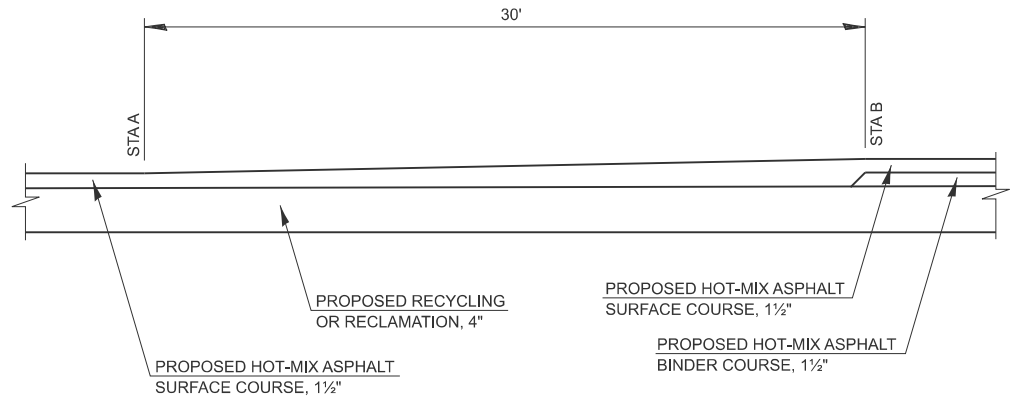
F.A.S. RTE.	SECTION	COUNTY	TOTAL SHEETS	SHEET NO.
*	20-00102-00-PP	PIKE	32	31
CONTRACT NO. 93853				
ILLINOIS FED. AID PROJECT				

* 2601 & 602



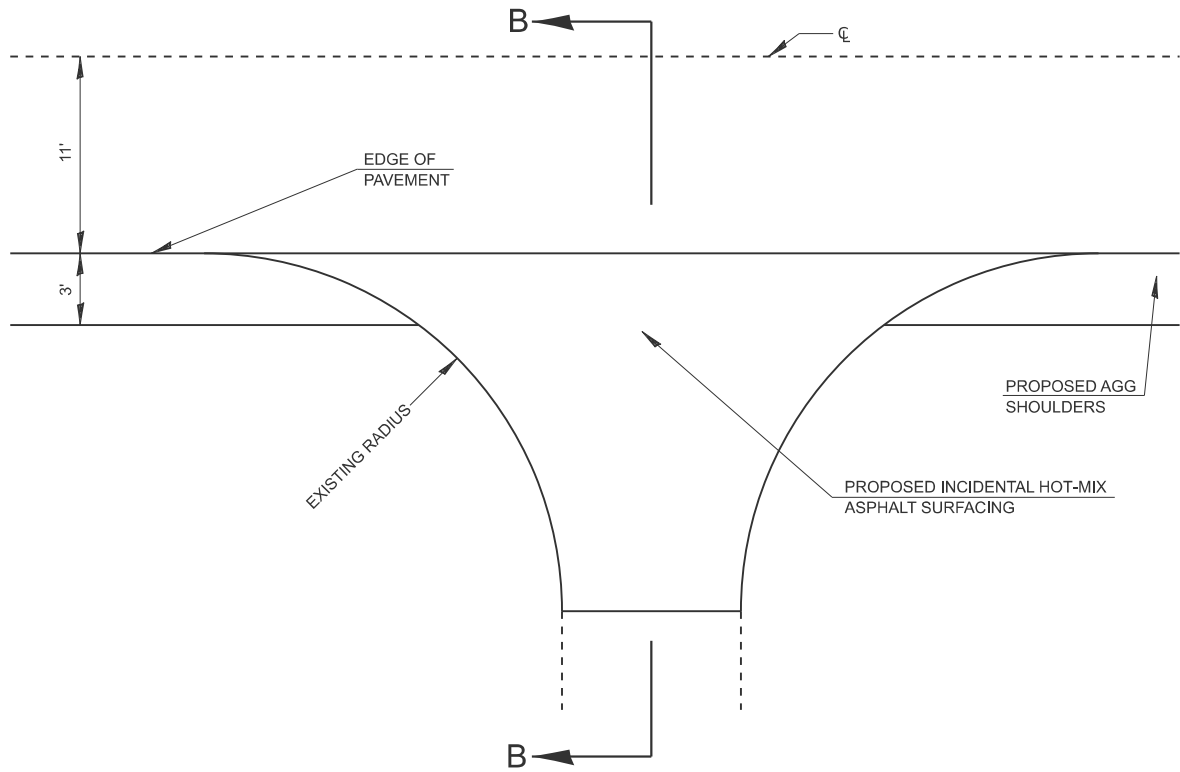
LOCATION	STA A	STA B	L	X
CH 2	14+30.00	14+00.00	30'	1½"
CH 2	199+15.06	199+45.06	30'	1½"
CH 14	5+05.00	4+75.00	30'	1½"
CH 14	266+02.35	266+62.35	60'	3"
CH 14	269+52.86	268+92.86	60'	3"
CH 14	358+04.55	358+64.55	60'	3"
CH 14	359+43.30	360+03.30	60'	3"
CH 14	376+80.54	377+40.54	60'	3"

BUTT JOINT DETAILS

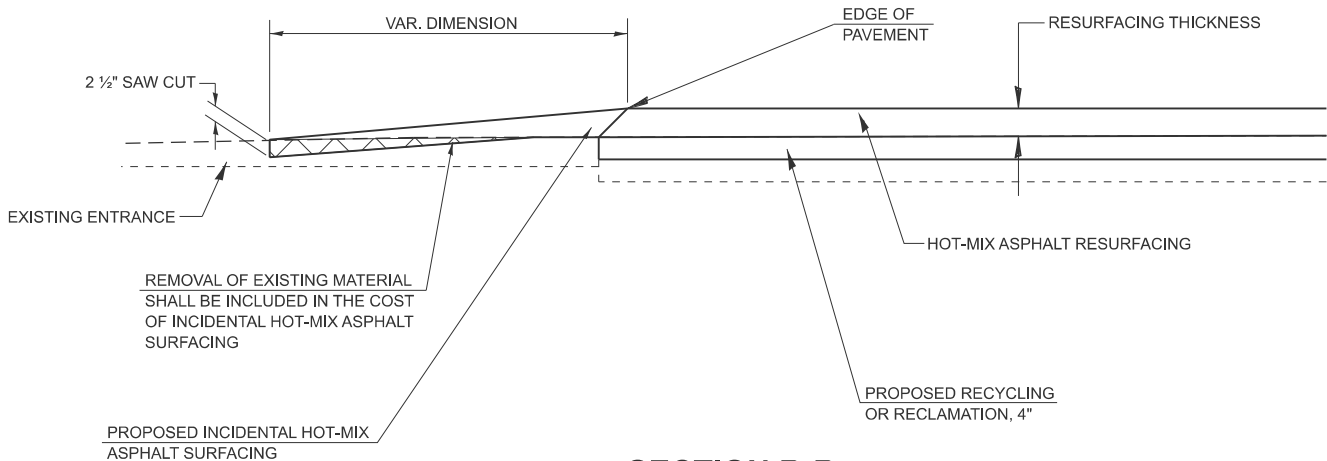


STA A	STA B
80+30.00	80+60.00
83+76.07	83+46.07
85+20.40	85+50.40
356+44.99	356+14.99
357+10.23	357+40.23

COUNTY HIGHWAY 14 PAVEMENT TRANSITION



PLAN



SECTION B-B

SIDEROAD DETAIL

MODEL: Details-02 [Sheet]
FILE NAME: Y:\5386-CH 2 and CH 14 Reconstruction (Pike)\CADD\CADD Sheets\5386-sht-details.dgn



USER NAME = HCOultas	DESIGNED -	REVISED -
	DRAWN -	REVISED -
	CHECKED -	REVISED -
PLOT DATE = 11/13/2025	DATE -	REVISED -

STATE OF ILLINOIS
DEPARTMENT OF TRANSPORTATION

COUNTY HIGHWAY 2 & COUNTY HIGHWAY 14
DETAILS

SCALE: SHEET 2 OF 2 SHEETS STA. TO STA.

F.A.S. RTE.	SECTION	COUNTY	TOTAL SHEETS	SHEET NO.
*	20-00102-00-PP	PIKE	32	32
CONTRACT NO. 93853				
ILLINOIS FED. AID PROJECT				

* 2601 & 602