

02-27-2026 LETTING ITEM 087

INDEX OF SHEETS

- 01 TITLE SHEET
- 02 GENERAL NOTES
- 03 SUMMARY OF QUANTITIES
- 04-05 SCHEDULE OF QUANTITIES
- 06-14 PLAN SHEETS
- 15-16 HAWK DETAILS

HIGHWAY STANDARDS

- 000001-09 STANDARD SYMBOLS, ABBREVIATIONS, AND PATTERNS
- 280001-07 TEMPORARY EROSION CONTROL SYSTEMS
- 701501-06 URBAN LANE CLOSURE, 2L, 2W, UNDIVIDED
- 701701-10 URBAN LANE CLOSURE, 2L, 2W, UNDIVIDED
- 701801-06 SIDEWALK CORNER OR CROSSWALK CLOSURE
- 701901-11 TRAFFIC CONTROL DEVICES
- 728001-01 TELESCOPING STEEL SIGN SUPPORTS
- 729001-01 APPLICATIONS OF TYPES A AND B METAL POSTS (FOR SIGNS & MARKERS)
- 878001-11 CONCRETE FOUNDATION DETAILS
- BLR 22-7 TYPICAL APPLICATION OF TRAFFIC CONTROL DEVICES

STATE OF ILLINOIS  
DEPARTMENT OF TRANSPORTATION  
DIVISION OF HIGHWAYS  
PROPOSED HIGHWAY PLANS FOR

SAFE ROUTES TO SCHOOL PROJECT  
SIGNAGE IMPROVEMENTS  
THROUGHOUT THE CITY OF MOLINE

VARIOUS LOCATIONS

SECTION 24-00299-00-SG  
PROJECT NO. XW17 (120)  
JOB# C-92-001-26  
CONTRACT #85790

PROJECT LOCATION MAP



CITY OF MOLINE, IL

APPROVED

12/18/25

DATE

*David Dryer*  
DAVID DRYER, DIRECTOR OF ENGINEERING

ILLINOIS DEPARTMENT OF TRANSPORTATION

PASSED December 19, 2025

DATE

*Shawn C. Thompson*

DISTRICT 2 ENGINEER OF LOCAL ROADS & STREETS

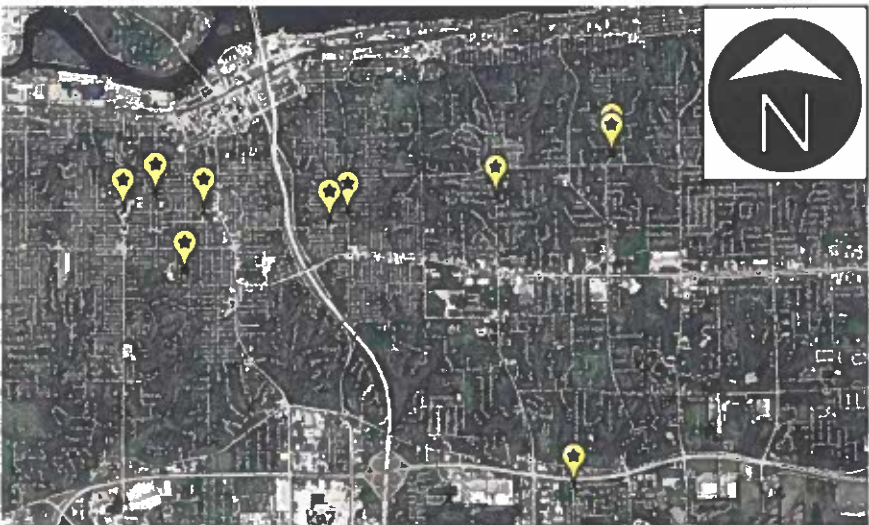
RELEASING FOR BID  
BASED ON LIMITED  
REVIEW

12/19/25

DATE

*Julia Thompson*

DEPUTY DIRECTOR OF HIGHWAYS, REGION 2 ENGINEER



11X17 PLANS HAVE BEEN PREPARED USING STANDARD ENGINEERING SCALES. REDUCED SIZE PLANS MAY NOT CONFORM TO STANDARD SCALES. IN MAKING MEASUREMENTS ON REDUCED PLANS, THE ABOVE SCALES MAY BE USED.

J.U.L.I.E.  
JOINT UTILITY LOCATION  
INFORMATION FOR EXCAVATION  
1-800-892-0123 OR 811



I HEREBY CERTIFY THAT THESE PLANS WERE PREPARED BY ME OR UNDER MY DIRECT PERSONAL SUPERVISION AND THAT I AM A DULY REGISTERED PROFESSIONAL ENGINEER UNDER THE LAWS OF THE STATE OF ILLINOIS.

*Laura Klauer*

LAURA C. KLAUER, P.E.  
LICENSE NO. 062-060373

12-18-25

DATE  
EXPIRES 11-30-27

H:\Engineering\All Projects\MFT 24-00299-00-SG Safe Routes to School Signing Project\Design Documents\Drawings\MFT 299 Design.dwg

UTILITIES

THE FOLLOWING UTILITY COMPANIES MAY HAVE FACILITIES LOCATED WITHIN THE PROJECT AREA:

CITY OF MOLINE PUBLIC UTILITIES:

- ELECTRICAL MAINTENANCE DEPARTMENT
- STORMWATER DEPARTMENT
- STREET DEPARTMENT
- WATER POLLUTION CONTROL DEPARTMENT
- WATER DEPARTMENT

PRIVATE GAS AND ELECTRIC:

- MIDAMERICAN ENERGY

PRIVATE TELECOMMUNICATIONS:

- AT&T
- BLUEBIRD NETWORK
- CENTURY LINK
- COMCAST
- GENESEO COMMUNICATIONS
- LUMEN
- MEDIACOM
- METRONET
- VERIZON
- WINDSTREAM
- WISCONSIN INDEPENDENT NETWORKS
- OTHERS TO BE DETERMINED

THE CONTRACTOR SHALL CALL J.U.L.I.E. AT 1-800-892-0123 OR 811 TO CONTACT ALL UTILITY COMPANIES WHICH MAY HAVE FACILITIES WITHIN THE PROJECT AREA. PRIOR TO THE COMMENCEMENT OF CONSTRUCTION, ALL POINTS OF POSSIBLE CONFLICT SHALL BE EXCAVATED TO VERIFY EXACT LOCATIONS AND ELEVATIONS.

GENERAL NOTES

1. THIS PROJECT SHALL BE CONSTRUCTED IN ACCORDANCE WITH THE FOLLOWING STANDARDS: THE "STANDARD SPECIFICATIONS FOR ROAD AND BRIDGE CONSTRUCTION" ADOPTED JANUARY 1, 2022 BY THE ILLINOIS DEPARTMENT OF TRANSPORTATION; THE "SUPPLEMENTAL SPECIFICATIONS AND RECURRING SPECIAL PROVISIONS" ADOPTED JANUARY 1, 2026 BY THE ILLINOIS DEPARTMENT OF TRANSPORTATION; THE "2023 SUPPLEMENTAL SPECIFICATIONS" ADOPTED JANUARY 1, 2023 BY THE CITY OF MOLINE; AND THE SPECIAL PROVISIONS CONTAINED WITHIN THE BIDDING DOCUMENTS.
2. ALL POINTS OF POSSIBLE CONFLICT WITH UTILITIES ARE TO BE EXCAVATED AS NECESSARY TO VERIFY THE EXACT LOCATION AND ELEVATION BEFORE COMMENCEMENT OF CONSTRUCTION. THIS WORK SHALL BE CONSIDERED INCIDENTAL TO THE CONTRACT.
3. TRAFFIC CONTROL SHALL BE IN ACCORDANCE WITH THE "MANUAL ON UNIFORM TRAFFIC CONTROL DEVICES" ADOPTED 2023 BY THE FEDERAL HIGHWAY ADMINISTRATION WITH REVISIONS 1 AND 2 IN 2012, THE "STANDARD SPECIFICATIONS FOR ROAD AND BRIDGE CONSTRUCTION" ADOPTED JANUARY 1, 2022 BY THE ILLINOIS DEPARTMENT OF TRANSPORTATION, AND THE SPECIAL PROVISIONS CONTAINED WITHIN THE BIDDING DOCUMENTS.
4. THE CONTRACTOR SHALL PROVIDE PROTECTION TO THE PUBLIC IN ACCORDANCE WITH ARTICLE 107.14 OF THE "STANDARD SPECIFICATIONS FOR ROAD AND BRIDGE CONSTRUCTION" ADOPTED JANUARY 1, 2022 BY THE ILLINOIS DEPARTMENT OF TRANSPORTATION. THIS SHALL INCLUDE TRAFFIC CONTROL AND OTHER NECESSARY MEASURES TO UPHOLD AN ADEQUATE LEVEL OF SAFETY. TRAFFIC CONTROL SHALL BE PROVIDED, TO THE SATISFACTION OF THE ENGINEER, INCLUDING ALL PROTECTION DEEMED NECESSARY BEYOND THAT SHOWN IN THE PLANS OR SPECIAL PROVISIONS. THE ABSENCE OF TRAFFIC CONTROL DRAWINGS DOES NOT RELIEVE THE CONTRACTOR OF THEIR RESPONSIBILITY TO ENSURE PUBLIC SAFETY.
5. THE CONTRACTOR SHALL PROTECT ALL EXISTING SIDEWALK, PAVEMENT, LANDSCAPING, AND RETAINING WALLS THAT ARE NOT MARKED FOR REMOVAL. ANY DAMAGE CAUSED DURING CONSTRUCTION SHALL BE REPAIRED AT THE CONTRACTOR'S EXPENSE.
6. THE REMOVAL, STORAGE, AND REINSTALLATION OF EXISTING SIGNS AND FENCING WITHIN THE CONSTRUCTION LIMITS SHALL BE CONSIDERED INCIDENTAL TO THE CONTRACT.
7. THE CONTRACTOR SHALL NOTIFY INDIVIDUAL RESIDENTS PRIOR TO THE REMOVAL OF DRIVEWAYS OR TREES. THE CONTRACTOR SHALL BE RESPONSIBLE FOR COORDINATING THE REMOVAL AND RECONSTRUCTION SCHEDULE OF DRIVEWAYS WITH INDIVIDUAL RESIDENTS IN ORDER TO MINIMIZE DISRUPTIONS TO DRIVEWAY ACCESS. THIS WORK SHALL BE CONSIDERED INCIDENTAL TO THE CONTRACT.
8. THE CONTRACTOR SHALL ENSURE THE CONTINUATION OF MAIL SERVICES AND GARBAGE COLLECTION SERVICES TO RESIDENTS THROUGHOUT THE DURATION OF THE PROJECT. THE CONTRACTOR SHALL NOTIFY RESIDENTS PRIOR TO ANY CHANGES OR DISRUPTIONS IN THESE SERVICES. THIS WORK SHALL BE CONSIDERED INCIDENTAL TO THE CONTRACT.
9. ALL HONEYCOMBING AND/OR POROUS AREAS IN BACK OF CURB WILL BE CORRECTED AS DIRECTED BY THE ENGINEER. SLUMP NOT TO EXCEED 3". REQUIRED AIR, 5% - 8%. NO WATER MAY BE ADDED AT JOBSITE TO EXCEED THE DESIGN SLUMP. ALL TIE BARS, DOWEL BARS AND REINFORCING STEEL SHALL BE EPOXY COATED.

SYMBOL LEGEND

EXISTING	SYMBOL NAME	PROPOSED	EXISTING	SYMBOL NAME	PROPOSED
	MAILBOX			GAS VALVE	-
	MANHOLE			HANDHOLE	
	WATER SERVICE VALVE			ELECTRICAL JUNCTION BOX	
	VALVE & VALVE BOX			TELEPHONE JUNCTION BOX	
	VALVE VAULT			CABLE TELEVISION JUNCTION BOX	
	FIRE HYDRANT			GUY WIRE	-
	REDUCER			UTILITY POLE	-
	LIFT STATION			UTILITY POLE WITH LIGHT	-
	CLEANOUT			STREET LIGHT	
	ALLEY CATCH BASIN			DECORATIVE LIGHT	
	CATCH BASIN			STREET SIGN	
	CATCH BASIN SINGLE			OTHER SIGNS (SINGLE POST)	
	CATCH BASIN DOUBLE			OTHER SIGNS (DOUBLE POST)	
	CATCH BASIN TRIPLE			TRAFFIC CONTROL CABINET	
	CATCH BASIN SPECIAL			TRAFFIC SIGNAL	
	FLARED END SECTION			PROPERTY PIN	
	DIRECTION OF FLOW				
	BUSH				
	DECIDUOUS TREE				
	EVERGREEN TREE	-			
	STUMP	-			

LINETYPE LEGEND

EXISTING	LINETYPE NAME	PROPOSED
	CONTOURS	
	RIGHT OF WAY (R.O.W.)	
	CENTER LINE	
	WATER MAIN	
	WATER SERVICE LINE	
	SANITARY SEWER	
	STORM SEWER	
	UNDER DRAIN	
	ELECTRIC	
	GAS	
	CABLE TELEVISION	
	FIBER OPTIC CABLE	
	TELEPHONE LINE	
	TREE LINE	
	FENCE	
	BUILDING	

ABBREVIATIONS



T/C	-	TOP OF CURB
T/S	-	TOP OF SIDEWALK
P	-	PAVEMENT
F/L	-	FLOW LINE
L.L.	-	LEVEL LANDING
T.P.	-	TRANSITION PANEL



CITY OF MOLINE  
ENGINEERING DEPARTMENT  
(309) 524-2350  
3635 4TH AVENUE, MOLINE, IL 61265

SRTS SIGNAGE PROJECT

VARIOUS LOCATIONS  
GENERAL NOTES

			SCALED FOR 11"X17" PAPER  SCALE: N.T.S.	Date <b>9-07-25</b>	SHEET <b>02</b> OF <b>16</b>
				Project <b>24-00299-00-SG</b>	
				Designer <b>JM</b>	
DATE	REVISION			NORTH	

H:\Engineering\All Projects\MFT 24-00299-00-SG Safe Routes to School Signing Project\Design Documents\MFT 299 Design.dwg

SUMMARY OF QUANTITIES  
CONSTRUCTION TYPE CODE: 0021

	ITEM	UNIT	QUANTITY
	67100100 MOBILIZATION	L SUM	1
	72000100 SIGN PANEL - TYPE 1	SQ FT	80
	72800100 TELESCOPING STEEL SIGN SUPPORT	FOOT	64
	81028370 UNDERGROUND CONDUIT, PVC, 3" DIA.	FOOT	6
*	84500120 REMOVAL OF ELECTRIC SERVICE INSTALLATION	EACH	1
	87301225 ELECTRIC CABLE IN CONDUIT, SIGNAL NO. 14 3C	FOOT	542
	87301245 ELECTRIC CABLE IN CONDUIT, SIGNAL NO. 14 5C	FOOT	544
	87502720 TRAFFIC SIGNAL POST, ALUMINUM 18 FT	EACH	4
	87800100 CONCRETE FOUNDATION TYPE A	FOOT	56
	87800200 CONCRETE FOUNDATION TYPE D	FOOT	3
*	88102719 PEDESTRIAN SIGNAL HEAD, LED, 1-FACE, POST MOUNTED WITH COUNTDOWN TIMER	EACH	3
*	K1005421 SEEDING (SPECIAL)	ACRE	0.25
*	X7200044 PERMANENT RADAR SPEED SIGN	EACH	4
*	X1400031 REMOVE PEDESTRIAN PUSH-BUTTON	EACH	4
*	X1400097 SOLAR-POWERED ILLUMINATED SIGN, LED	EACH	8
*	X1400326 RECTANGULAR RAPID FLASHING BEACON ASSEMBLY (COMPLETE)	EACH	10
*	X5011100 FOUNDATION REMOVAL	EACH	3
*	X7010216 TRAFFIC CONTROL AND PROTECTION, (SPECIAL)	L SUM	1
*	X7240207 REMOVE EXISTING SIGN COMPLETE	EACH	8
*	X8570226 FULL-ACTUATED CONTROLLER AND TYPE IV CABINET, SPECIAL	EACH	2
*	X8760200 ACCESSIBLE PEDESTRIAN SIGNALS	EACH	4
*	X8950105 REMOVE EXISTING TRAFFIC CONTROLLER AND CABINET	EACH	2
*	X8950301 REMOVE EXISTING TRAFFIC SIGNAL POST	EACH	2
*	X8950305 REMOVE EXISTING SIGNAL HEAD	EACH	8
*	X8950307 REMOVE EXISTING PEDESTRIAN SIGNAL HEAD	EACH	3
*	XX009746 PEDESTRIAN HYBRID BEACON SIGNAL HEAD, POLYCARBONATE, LED, 1-FACE, 3-SECTION, POST MOUNTED (SPECIAL)	EACH	2
*	XX009747 PEDESTRIAN HYBRID BEACON SIGNAL HEAD, POLYCARBONATE, LED, 1-FACE, 3-SECTION, BRACKET MOUNTED (SPECIAL)	EACH	6

\* INDICATES SPECIAL PROVISION



CITY OF MOLINE  
ENGINEERING DEPARTMENT  
(309) 524-2350  
3635 4TH AVENUE, MOLINE, IL 61265

SRTS SIGNAGE PROJECT  
VARIOUS LOCATIONS  
SUMMARY OF QUANTITIES

DATE	REVISION



NORTH

SCALED FOR  
11"X17" PAPER  
0' 0' 0'  
SCALE: N.T.S.

Date	09-07-25
Project	24-00299-00-SG
Designer	JM

SHEET  
03  
OF  
16

H:\Engineering\All Projects\MFT 24--00299--00--SG Safe Routes to School Signing Project\Design Documents\Drawings\MFT 299 Design.dwg

67100100			
MOBILIZATION			
ENTIRE PROJECT	1.0	L	SUM
TOTAL:	1.0	L	SUM

72000100			
SIGN PANEL - TYPE 1			
7TH STREET AND 16TH AVENUE	40.0	SQ	FT
53RD STREET AND 11TH AVENUE C	40.0	SQ	FT
TOTAL:	80.0	SQ	FT

72800100			
TELESCOPING STEEL SIGN SUPPORT			
7TH STREET AND 16TH AVENUE	32.0	FOOT	
53RD STREET AND 11TH AVENUE C	32.0	FOOT	
TOTAL:	64.0	FOOT	

81028370			
UNDERGROUND CONDUIT, PVC, 3" DIA.			
41ST STREET BETWEEN 14TH AND 17TH AVENUE	6.0	FOOT	
TOTAL:	6.0	FOOT	

84500120			
REMOVAL OF ELECTRIC SERVICE INSTALLATION			
27TH STREET AND 16TH AVENUE	1.0	EACH	
TOTAL:	1.0	EACH	

87301225			
ELECTRIC CABLE IN CONDUIT, SIGNAL NO. 14 3C			
16TH AVENUE FROM 13TH TO 14TH STREET	266.0	FOOT	
41ST STREET BETWEEN 14TH AND 17TH AVENUE	276.0	FOOT	
TOTAL:	542.0	FOOT	

87301245			
ELECTRIC CABLE IN CONDUIT, SIGNAL NO. 14 5C			
16TH AVENUE FROM 13TH TO 14TH STREET	268.0	FOOT	
41ST STREET BETWEEN 14TH AND 17TH AVENUE	276.0	FOOT	
TOTAL:	544.0	FOOT	

87502720			
TRAFFIC SIGNAL POST, ALUMINUM 18 FT.			
25TH STREET BETWEEN 16TH AND 17TH AVENUE	2.0	EACH	
41ST STREET BETWEEN 14TH AND 17TH AVENUE	2.0	EACH	
TOTAL:	4.0	EACH	

87800100			
CONCRETE FOUNDATION, TYPE A			
10TH STREET AND 14TH AVENUE	8.0	FOOT	
12TH STREET AND 21ST AVENUE	8.0	FOOT	
25TH STREET BETWEEN 16TH AND 17TH AVENUE	8.0	FOOT	
27TH STREET AND 16TH AVENUE	8.0	FOOT	
41ST STREET BETWEEN 14TH AND 17TH AVENUE	8.0	FOOT	
53RD STREET SOUTH OF 11TH AVENUE C	8.0	FOOT	
48TH STREET AND 44TH AVENUE	8.0	FOOT	
TOTAL:	56.0	FOOT	

87800200			
CONCRETE FOUNDATION, TYPE D			
41ST STREET BETWEEN 14TH AND 17TH AVENUE	3.0	FOOT	
TOTAL:	3.0	FOOT	

88102719			
PEDESTRIAN SIGNAL HEAD, LED, 1-FACE, POST MOUNTED			
WITH COUNTDOWN TIMER			
16TH AVENUE FROM 13TH TO 14TH STREET	1.0	EACH	
41ST STREET BETWEEN 14TH AND 17TH AVENUE	2.0	EACH	
TOTAL:	3.0	EACH	

K1005421			
SEEDING (SPECIAL)			
ENTIRE PROJECT	0.25	ACRE	
TOTAL:	0.25	ACRE	

X7200044			
PERMANENT RADAR SPEED SIGN			
25TH STREET BETWEEN 16TH AND 17TH AVENUE	2.0	EACH	
41ST STREET BETWEEN 14TH AND 17TH AVENUE	2.0	EACH	
TOTAL:	4.0	EACH	

X1400031			
REMOVE PEDESTRIAN PUSH-BUTTON			
16TH AVENUE FROM 13TH TO 14TH STREET	2.0	EACH	
41ST STREET BETWEEN 14TH AND 17TH AVENUE	2.0	EACH	
TOTAL:	4.0	EACH	

X1400097			
SOLAR-POWERED ILLUMINATED SIGN, LED			
7TH STREET AND 16TH AVENUE	4.0	EACH	
53RD STREET AND 11TH AVENUE C	4.0	EACH	
TOTAL:	8.0	EACH	

X1400326			
RECTANGULAR RAPID FLASHING BEACON ASSEMBLY (COMPLETE)			
10TH STREET AND 14TH AVENUE	2.0	EACH	
12TH STREET AND 21ST AVENUE	2.0	EACH	
27TH STREET AND 16TH AVENUE	2.0	EACH	
53RD STREET SOUTH OF 11TH AVENUE C	2.0	EACH	
48TH STREET AND 44TH AVENUE	2.0	EACH	
TOTAL:	10.0	EACH	

X5011100			
FOUNDATION REMOVAL			
27TH STREET AND 16TH AVENUE	2.0	EACH	
41ST STREET BETWEEN 14TH AND 17TH AVENUE	1.0	EACH	
TOTAL:	3.0	EACH	

X7010216			
TRAFFIC CONTROL AND PROTECTION, (SPECIAL)			
ENTIRE PROJECT	1.0	L	SUM
TOTAL:	1.0	L	SUM

X7240207			
REMOVE EXISTING SIGN COMPLETE			
7TH STREET AND 16TH AVENUE	4.0	EACH	
53RD STREET AND 11TH AVENUE C	4.0	EACH	
TOTAL:	8.0	EACH	

X8570226			
FULL-ACTUATED CONTROLLER AND TYPE IV CABINET, SPECIAL			
16TH AVENUE FROM 13TH TO 14TH STREET	1.0	EACH	
41ST STREET BETWEEN 14TH AND 17TH AVENUE	1.0	EACH	
TOTAL:	2.0	EACH	

X8760200			
ACCESSIBLE PEDESTRIAN SIGNALS			
16TH AVENUE FROM 13TH TO 14TH STREET	2.0	EACH	
41ST STREET BETWEEN 14TH AND 17TH AVENUE	2.0	EACH	
TOTAL:	4.0	EACH	



CITY OF MOLINE  
ENGINEERING DEPARTMENT  
(309) 524-2350  
3635 4TH AVENUE, MOLINE, IL 61265

SRTS SIGNAGE PROJECT

VARIOUS LOCATIONS  
SCHEDULE OF QUANTITIES 1 / 2

DATE	REVISION



NORTH

SCALED FOR  
11"X17" PAPER

0' 0' 0'

SCALE: 0" = 0'

Date	09-07-25
Project	24-00299-00-SG
Designer	JM

SHEET  
04  
OF  
16

H:\Engineering\All Projects\MFT 24-00299-00-SG Safe Routes to School Signing Project\Design Documents\Drawings\MFT 299 Design.dwg

X8950105		
REMOVE EXISTING TRAFFIC CONTROLLER AND CABINET		
16TH AVENUE FROM 13TH TO 14TH STREET	1.0	EACH
41ST STREET BETWEEN 14TH AND 17TH AVENUE	1.0	EACH
TOTAL:	2.0	EACH

X8950301		
REMOVE EXISTING TRAFFIC SIGNAL POST		
27TH STREET AND 16TH AVENUE	2.0	EACH
TOTAL:	2.0	EACH

X8950305		
REMOVE EXISTING SIGNAL HEAD		
16TH AVENUE FROM 13TH TO 14TH STREET	4.0	EACH
41ST STREET BETWEEN 14TH AND 17TH AVENUE	4.0	EACH
TOTAL:	8.0	EACH

X8950307		
REMOVE EXISTING PEDESTRIAN SIGNAL HEAD		
16TH AVENUE FROM 13TH TO 14TH STREET	1.0	EACH
41ST STREET BETWEEN 14TH AND 17TH AVENUE	2.0	EACH
TOTAL:	3.0	EACH

XX009746		
PEDESTRIAN HYBRID BEACON SIGNAL HEAD, POLYCARBONATE LED, 1-FACE, 3-SECTION, POST MOUNTED (SPECIAL)		
41ST STREET BETWEEN 14TH AND 17TH AVENUE	2.0	EACH
TOTAL:	2.0	EACH

XX009747		
PEDESTRIAN HYBRID BEACON SIGNAL HEAD, POLYCARBONATE LED, 1-FACE, 3-SECTION, BRACKET MOUNTED (SPECIAL)		
16TH AVENUE FROM 13TH TO 14TH STREET	4.0	EACH
41ST STREET BETWEEN 14TH AND 17TH AVENUE	2.0	EACH
TOTAL:	6.0	EACH



CITY OF MOLINE  
ENGINEERING DEPARTMENT  
(309) 524-2350  
3635 4TH AVENUE, MOLINE, IL 61265

SRTS SIGNAGE PROJECT  
VARIOUS LOCATIONS  
SCHEDULE OF QUANTITIES 2 / 2

DATE	REVISION



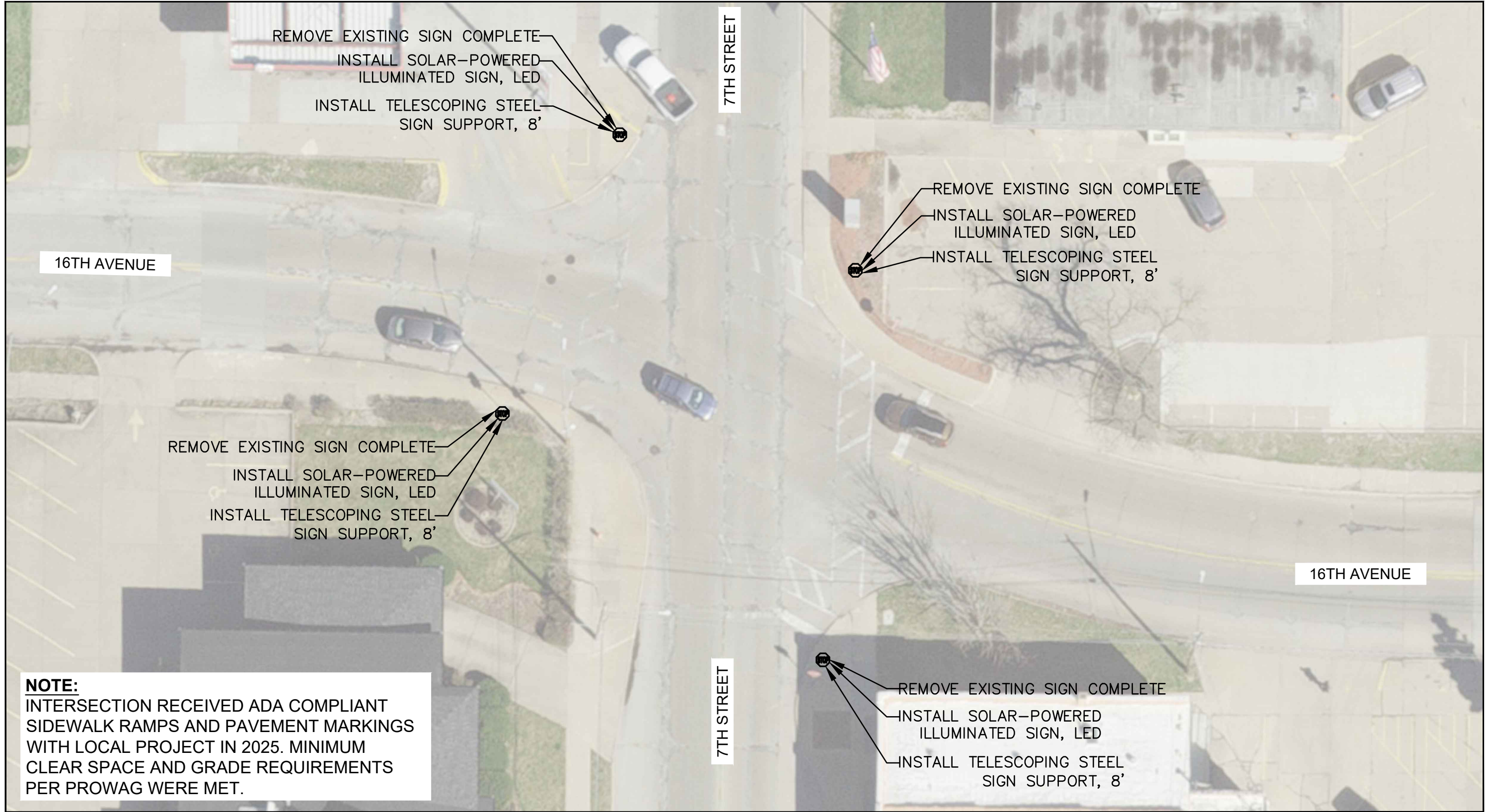
SCALED FOR  
11"X17" PAPER  
0' 0' 0'  
SCALE: 0" = 0'

Date	09-07-25
Project	24-00299-00-SG
Designer	JM

SHEET  
05  
OF  
16



H:\Engineering\All Projects\MFT 24-00299-00-SG Safe Routes to School Signing Project\Design Documents\Drawings\MFT 299 Design.dwg



CITY OF MOLINE  
ENGINEERING DEPARTMENT  
(309) 524-2350  
3635 4TH AVENUE, MOLINE, IL 61265

**SRTS SIGNAGE PROJECT**  
LOCATION #1: 7TH STREET AND 16TH AVENUE  
PLAN SHEET 1 / 9

DATE	REVISION



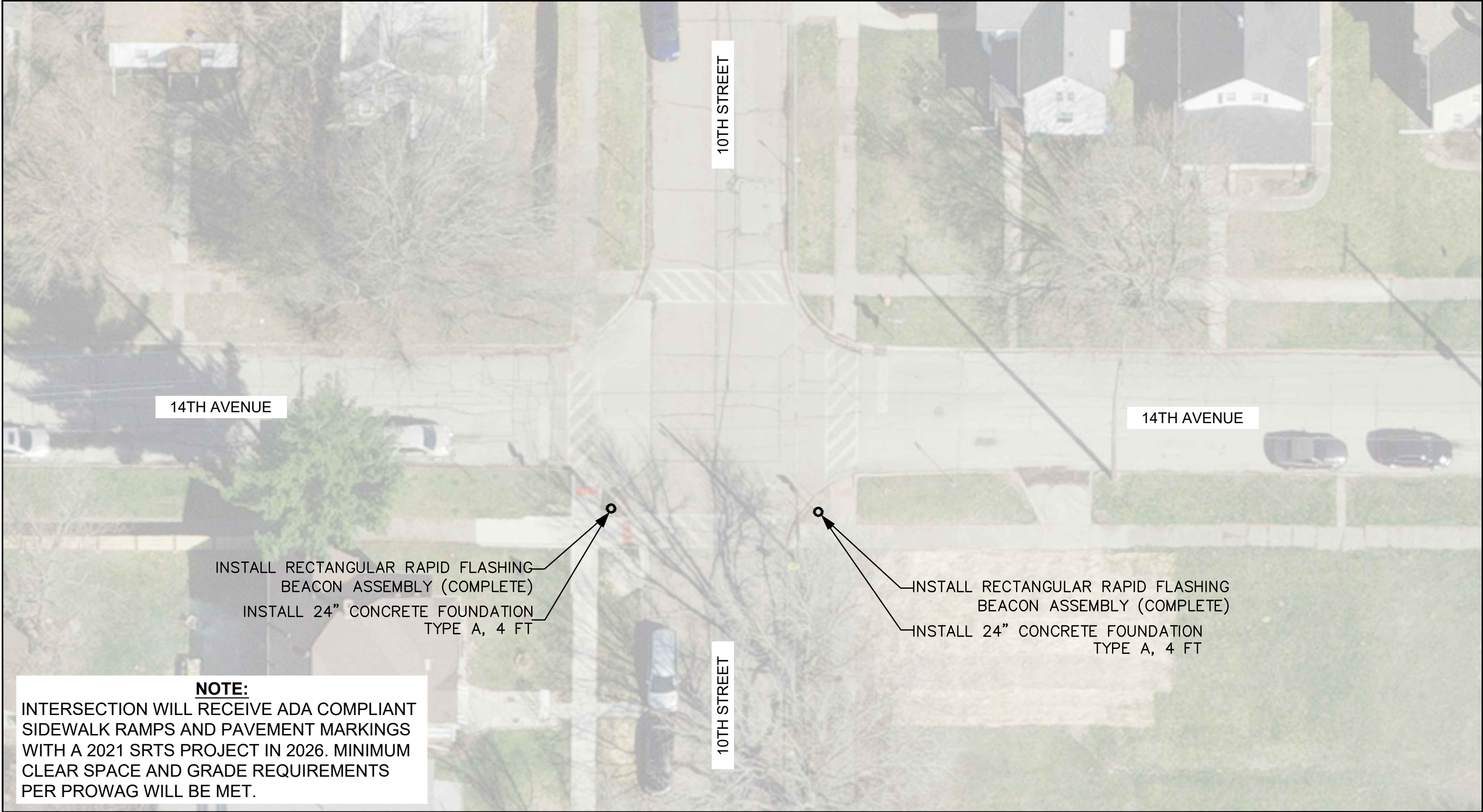
SCALED FOR  
11"X17" PAPER  
0' 10' 20'  
SCALE: 1" = 20'

Date **07-03-25**  
Project **24-00299-00-SG**  
Designer **JM**

SHEET  
**06**  
OF  
**16**



H:\Engineering\All Projects\MFT 24-00299-00-SG Safe Routes to School Signing Project\Design Documents\Drawings\MFT 299 Design.dwg



CITY OF MOLINE  
ENGINEERING DEPARTMENT  
(309) 524-2350  
3635 4TH AVENUE, MOLINE, IL 61265

**SRTS SIGNAGE PROJECT**  
LOCATION #2: 10TH STREET AND 14TH AVENUE  
PLAN SHEET 2 / 9

DATE	REVISION



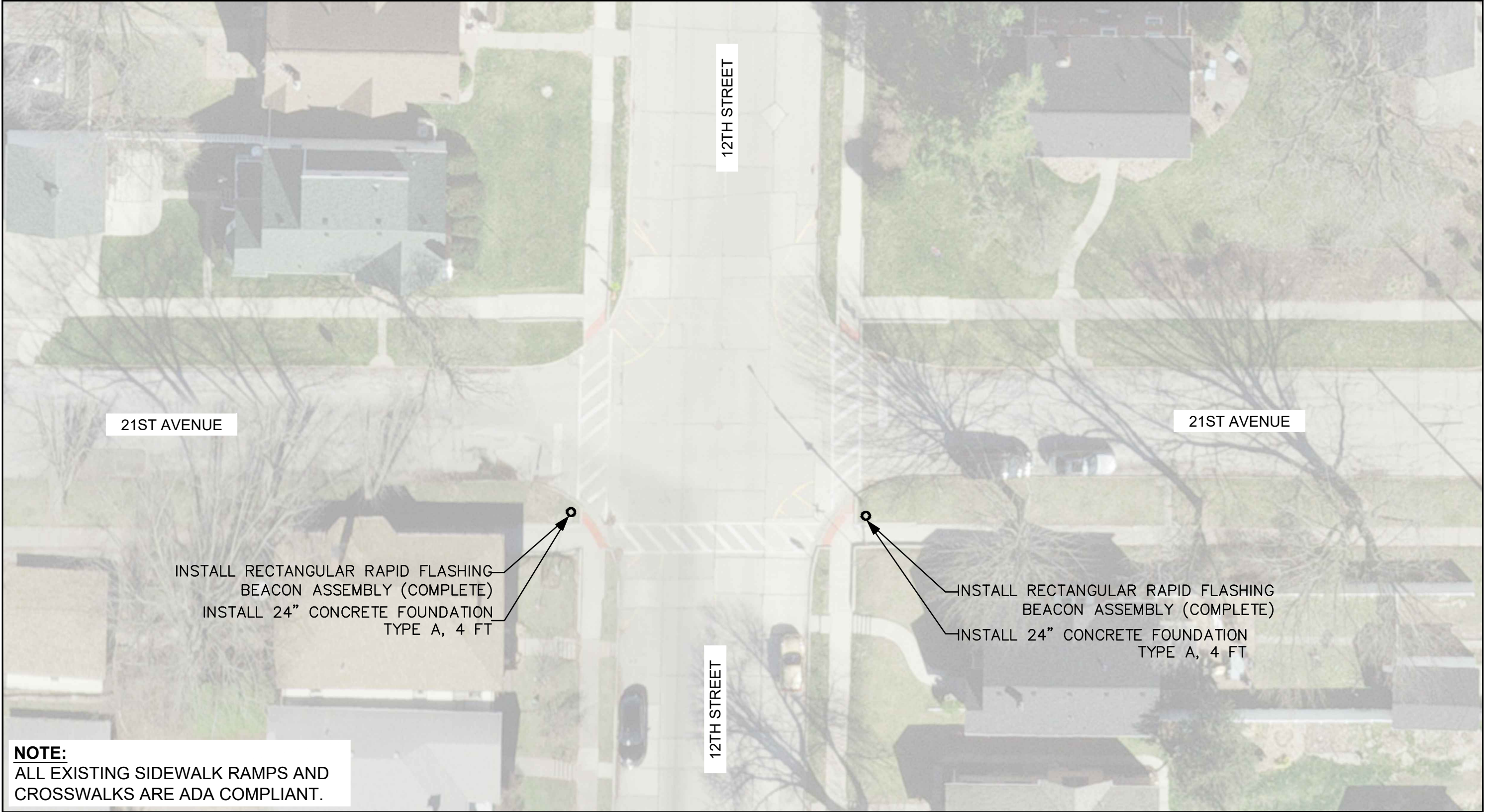
SCALED FOR  
11"X17" PAPER  
0' 10' 20'  
SCALE: 1" = 20'

Date **07-03-25**  
Project **24-00299-00-SG**  
Designer **JM**

SHEET  
**07**  
OF  
**16**



H:\Engineering\All Projects\MFT 24-00299-00-SG Safe Routes to School Signing Project\Design Documents\Drawings\MFT 299 Design.dwg



**NOTE:**  
ALL EXISTING SIDEWALK RAMPS AND  
CROSSWALKS ARE ADA COMPLIANT.



CITY OF MOLINE  
ENGINEERING DEPARTMENT  
(309) 524-2350  
3635 4TH AVENUE, MOLINE, IL 61265

**SRTS SIGNAGE PROJECT**  
LOCATION #3: 12TH STREET AND 21ST AVENUE  
PLAN SHEET 3 / 9

DATE	REVISION



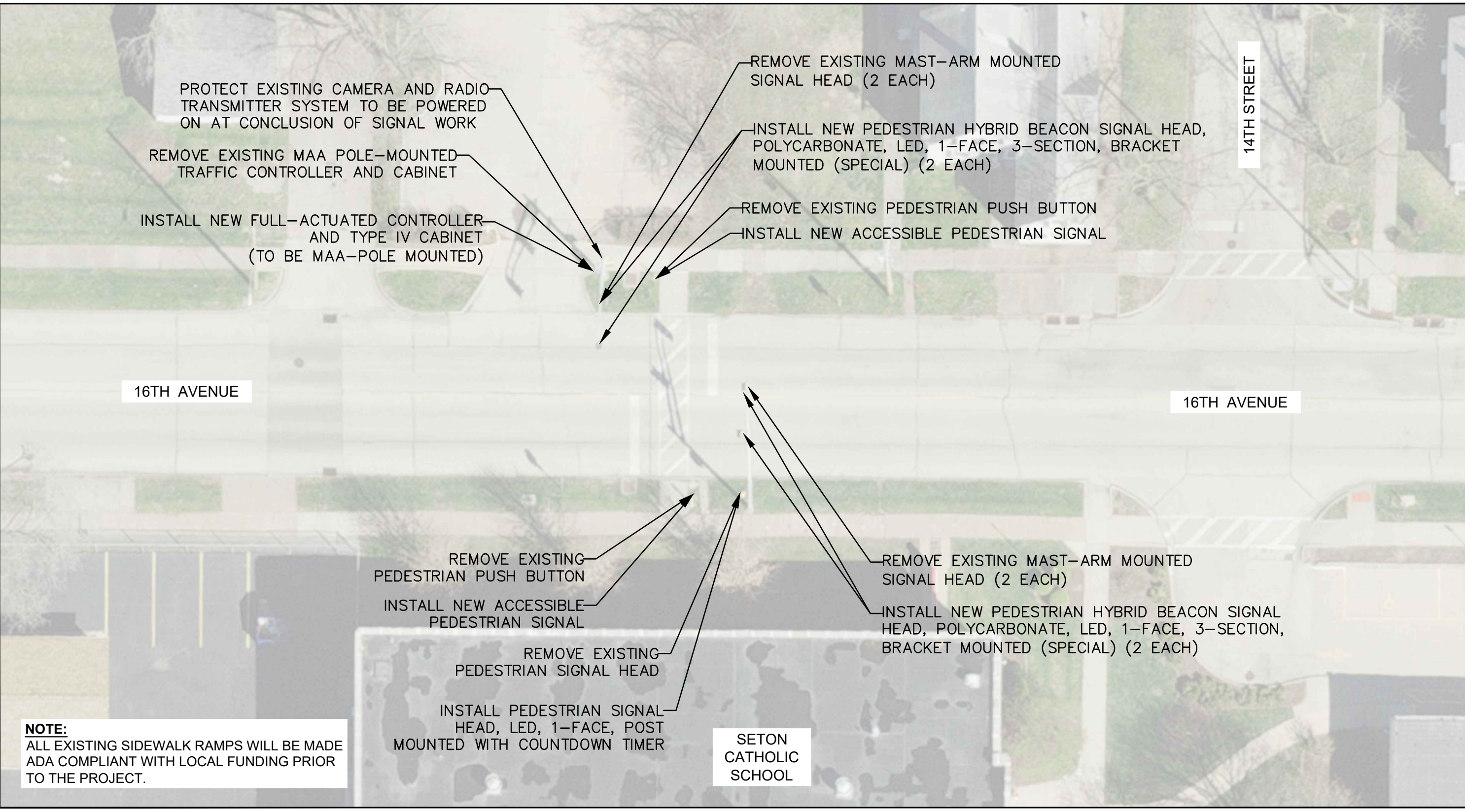
SCALED FOR  
11"X17" PAPER  
0' 10' 20'  
SCALE: 1" = 20'

Date	07-03-25
Project	24-00299-00-SG
Designer	JM

SHEET  
**08**  
OF  
**16**



H:\Engineering\All Projects\MFT 24-00299-00-SG Safe Routes to School Signing Project\Design Documents\Drawings\MFT 299 Design.dwg



**NOTE:**  
ALL EXISTING SIDEWALK RAMPS WILL BE MADE ADA COMPLIANT WITH LOCAL FUNDING PRIOR TO THE PROJECT.



CITY OF MOLINE  
ENGINEERING DEPARTMENT  
(309) 524-2350  
3635 4TH AVENUE, MOLINE, IL 61265

**SRTS SIGNAGE PROJECT**  
LOCATION #4: 16TH AVENUE BETWEEN 13TH AND 14TH STREET  
PLAN SHEET 4 / 9

DATE	REVISION



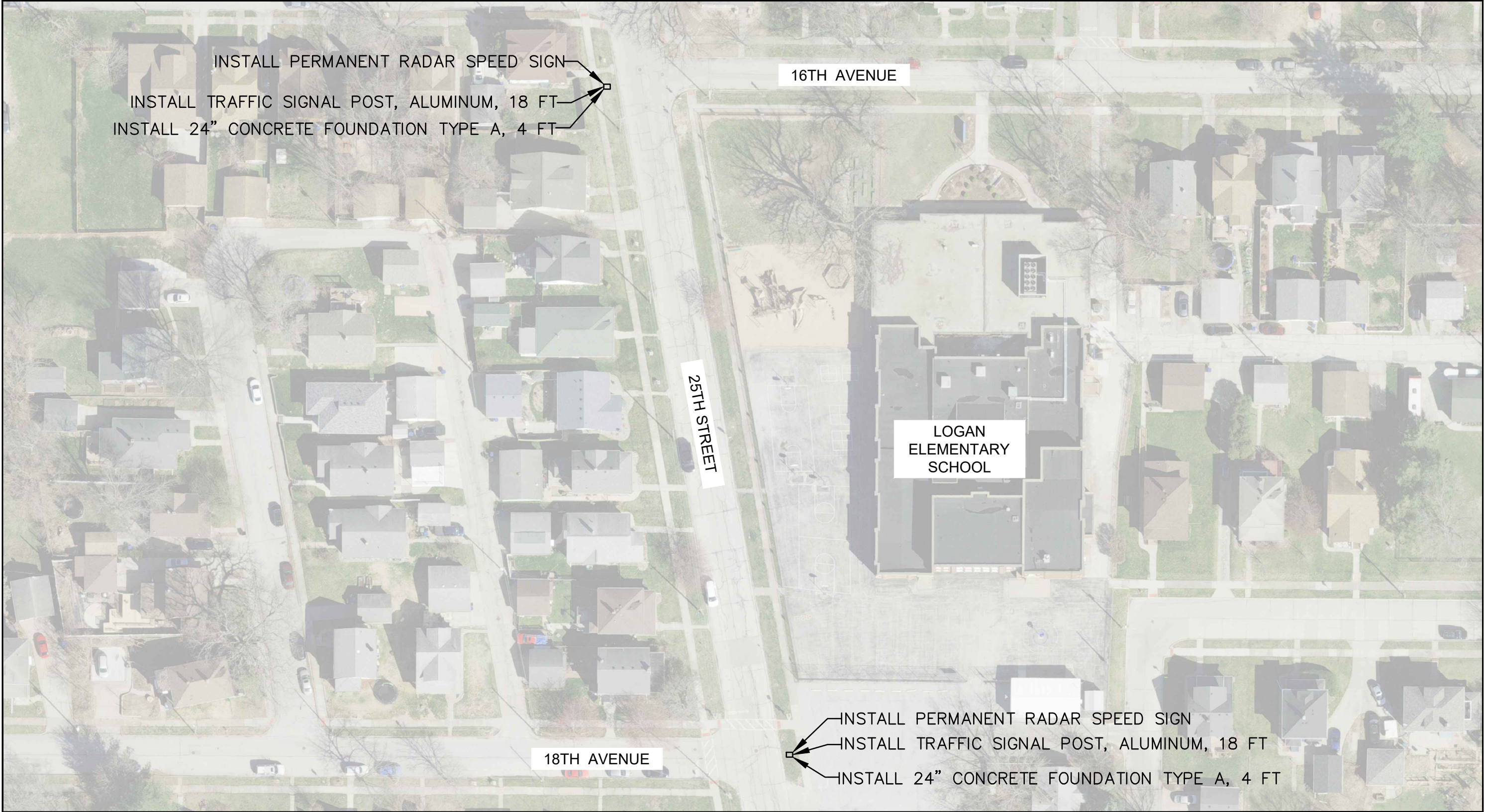
SCALED FOR  
11"X17" PAPER  
0' 10' 20'  
SCALE: 1" = 20'

Date **07-03-25**  
Project **24-00299-00-SG**  
Designer **JM**

SHEET  
**09**  
OF  
**16**



H:\Engineering\All Projects\MFT 24-00299-00-SG Safe Routes to School Signing Project\Design Documents\Drawings\MFT 299 Design.dwg



CITY OF MOLINE  
ENGINEERING DEPARTMENT  
(309) 524-2350  
3635 4TH AVENUE, MOLINE, IL 61265

**SRTS SIGNAGE PROJECT**  
LOCATION #5: 25TH STREET BETWEEN 16TH AND 17TH AVENUE  
PLAN SHEET 5 / 9

DATE	REVISION



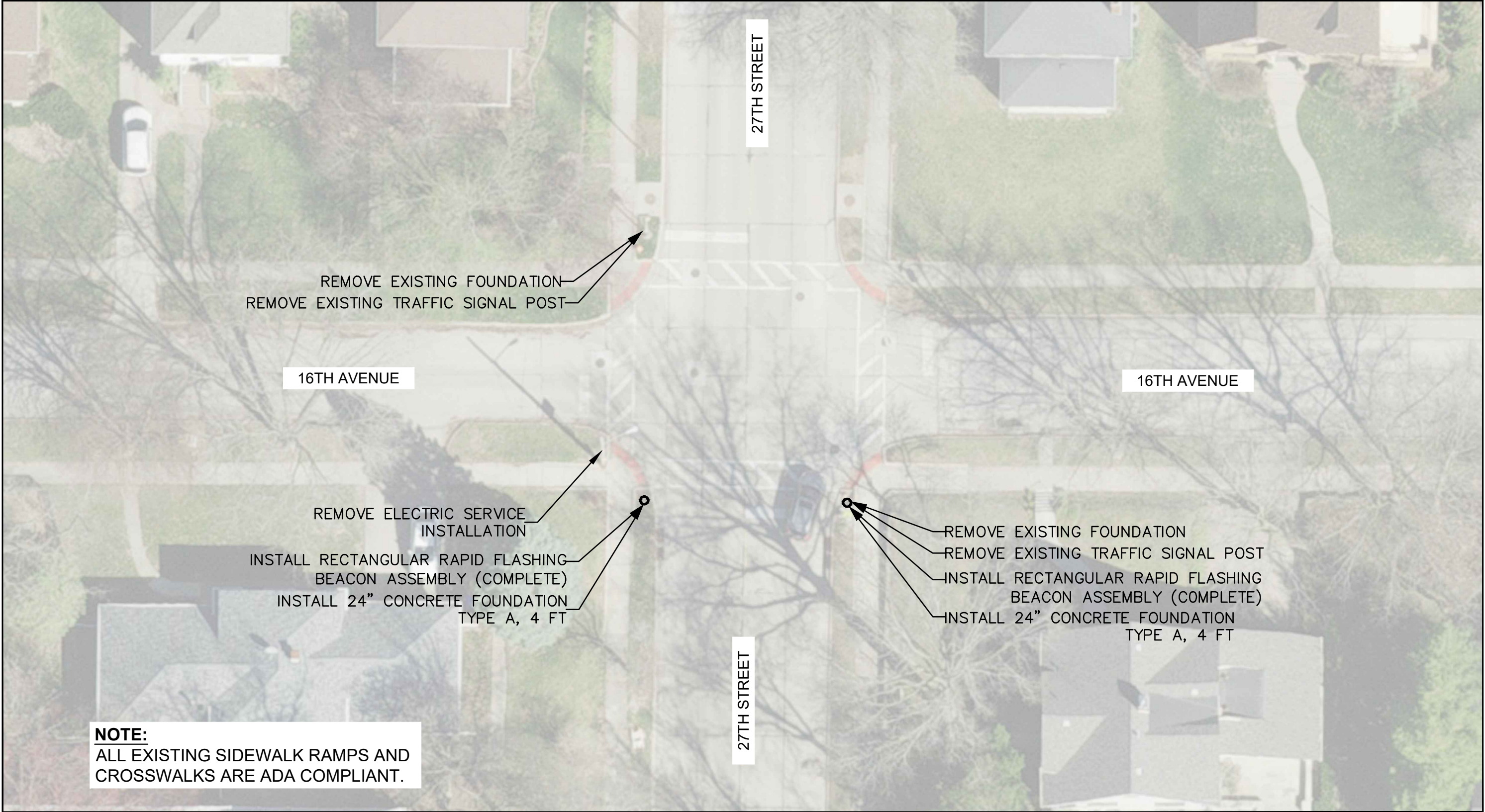
SCALED FOR  
11"X17" PAPER  
0' 30' 60'  
SCALE: 1" = 60'

Date **07-03-25**  
Project **24-00299-00-SG**  
Designer **JM**

SHEET  
**10**  
OF  
**16**



H:\Engineering\All Projects\MFT 24-00299-00-SG Safe Routes to School Signing Project\Design Documents\Drawings\MFT 299 Design.dwg



**NOTE:**  
ALL EXISTING SIDEWALK RAMPS AND  
CROSSWALKS ARE ADA COMPLIANT.



CITY OF MOLINE  
ENGINEERING DEPARTMENT  
(309) 524-2350  
3635 4TH AVENUE, MOLINE, IL 61265

**SRTS SIGNAGE PROJECT**  
LOCATION #6: 27TH STREET AND 16TH AVENUE  
PLAN SHEET 6 / 9

DATE	REVISION



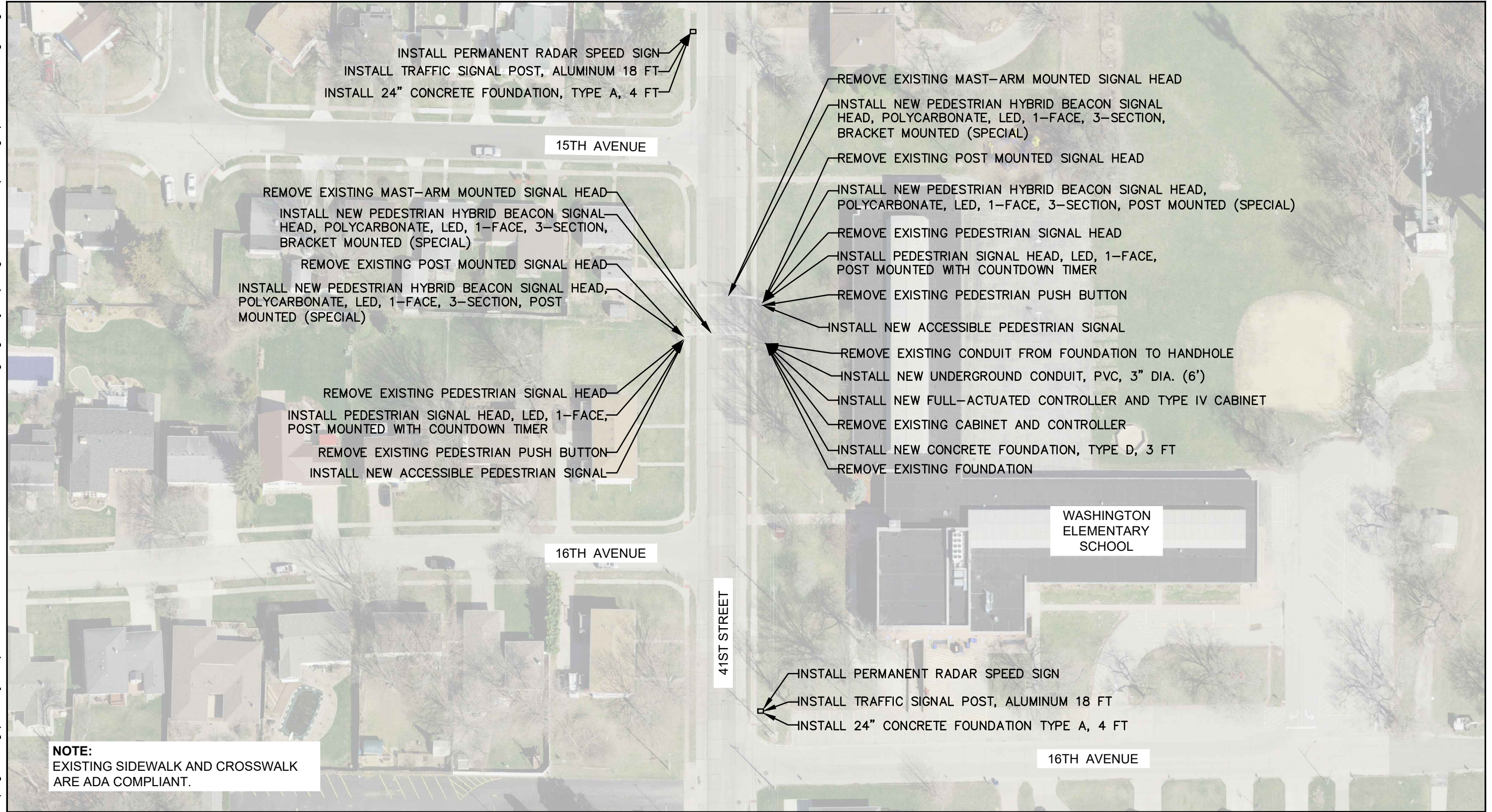
SCALED FOR  
11"X17" PAPER  
0' 10' 20'  
SCALE: 1" = 20'

Date	07-03-25
Project	24-00299-00-SG
Designer	JM

SHEET  
**11**  
OF  
**16**



H:\Engineering\All Projects\MFT 24-00299-00-SG Safe Routes to School Signing Project\Design Documents\Drawings\MFT 299 Design.dwg



CITY OF MOLINE  
ENGINEERING DEPARTMENT  
(309) 524-2350  
3635 4TH AVENUE, MOLINE, IL 61265

**SRTS SIGNAGE PROJECT**  
LOCATION #7: 41ST STREET BETWEEN 14TH AND 17TH AVENUE  
PLAN SHEET 7 / 9

DATE	REVISION



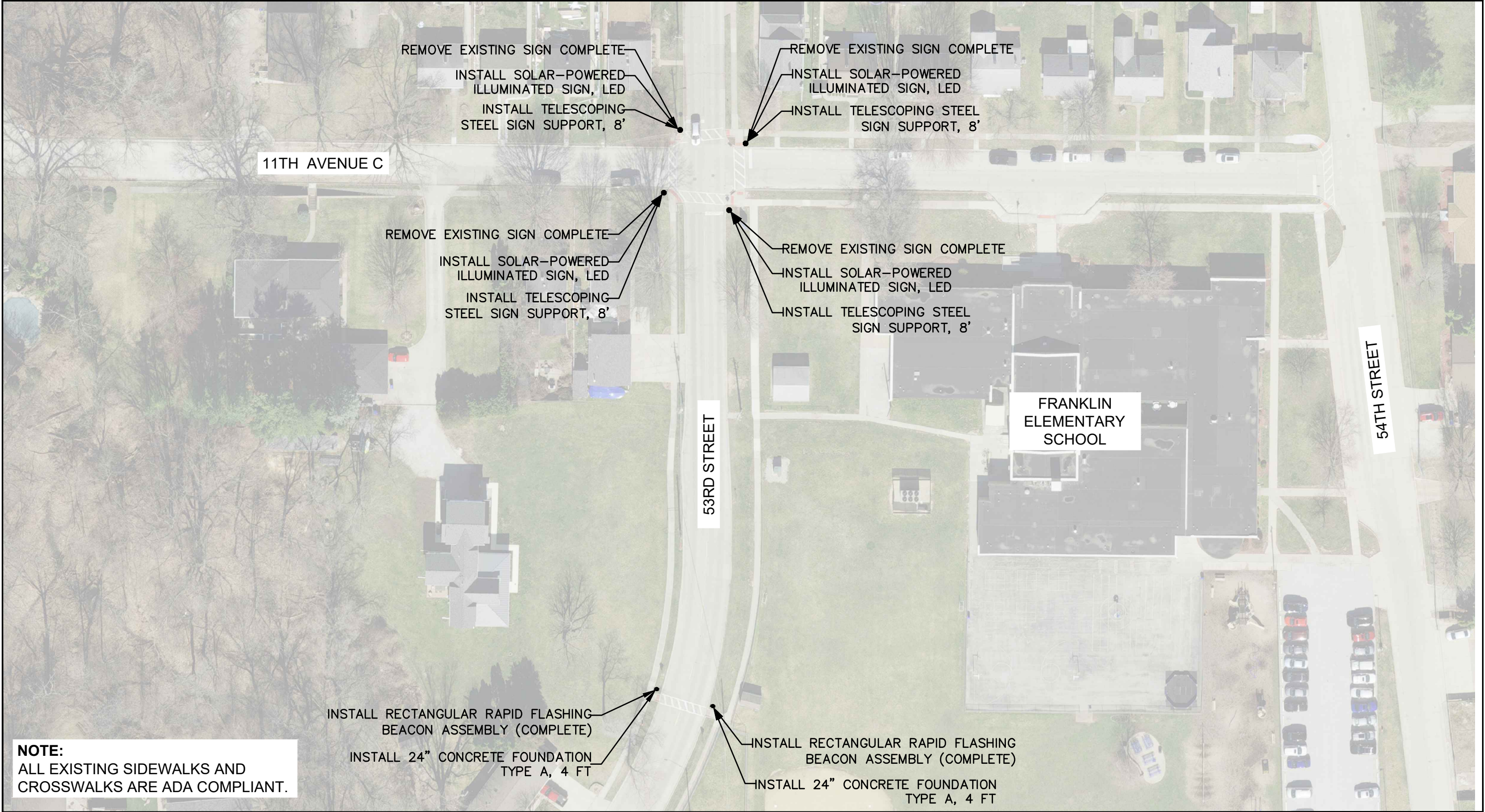
SCALED FOR  
11"X17" PAPER  
0' 35' 70'  
SCALE: 1" = 70'

Date **07-03-25**  
Project **24-00299-00-SG**  
Designer **JM**

SHEET  
**12**  
OF  
**16**



H:\Engineering\All Projects\MFT 24-00299-00-SG Safe Routes to School Signing Project\Design Documents\Drawings\MFT 299 Design.dwg



**NOTE:**  
ALL EXISTING SIDEWALKS AND  
CROSSWALKS ARE ADA COMPLIANT.



CITY OF MOLINE  
ENGINEERING DEPARTMENT  
(309) 524-2350  
3635 4TH AVENUE, MOLINE, IL 61265

**SRTS SIGNAGE PROJECT**  
LOCATION #8: 11TH AVENUE C AND 53RD STREET  
LOCATION #9: 53RD STREET SOUTH OF 11TH AVENUE C  
PLAN SHEET 8 / 9

DATE	REVISION



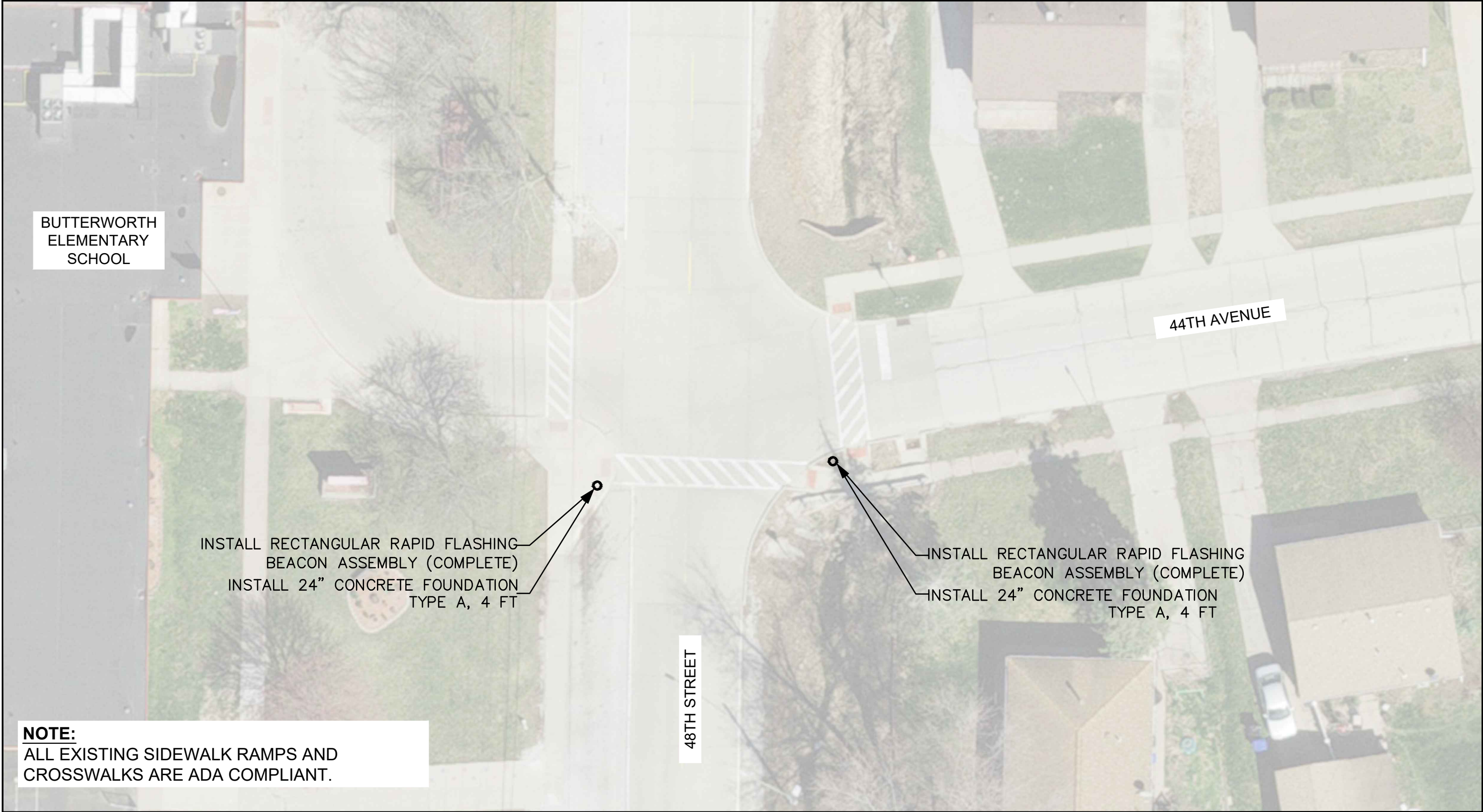
SCALED FOR  
11"X17" PAPER  
0' 30' 60'  
SCALE: 1" = 60'

Date **07-03-25**  
Project **24-00299-00-SG**  
Designer **JM**

SHEET  
**13**  
OF  
**16**



H:\Engineering\All Projects\MFT 24-00299-00-SG Safe Routes to School Signing Project\Design Documents\Drawings\MFT 299 Design.dwg



CITY OF MOLINE  
ENGINEERING DEPARTMENT  
(309) 524-2350  
3635 4TH AVENUE, MOLINE, IL 61265

**SRTS SIGNAGE PROJECT**  
LOCATION #10: 48TH STREET AND 44TH AVENUE  
PLAN SHEET 9 / 9

DATE	REVISION



SCALED FOR  
11"X17" PAPER  
0' 10' 20'  
SCALE: 1" = 20'

Date **07-03-25**  
Project **24-00299-00-SG**  
Designer **JM**

SHEET  
**14**  
OF  
**16**



H:\Engineering\All Projects\MFT 24-00299-00-SG Safe Routes to School Signing Project\Design Documents\Drawings\MFT 299 Design.dwg

NOTES:  
Electric Cable in Conduit 14-3C will be pulled to Pedestrian Push Buttons.  
Electric Cable in Conduit 14-3C will be pulled to Pedestrian Signal Heads.  
Electric Cable in Conduit 14-5C will be pulled from cabinet to all mast arm bases.

SIGNS

1

S1-1  
36" x 36"  
(2 REQ'D)

2

CROSSWALK

STOP ON RED

R10-23  
24" x 30"  
(2 REQ'D)

3

CROSSWALK

STOP ON RED

PROCEED ON FLASHING RED WHEN CLEAR

R10-23a  
30" x 36"  
(2 REQ'D)

TRAFFIC SIGNAL FACES

All signal faces shall be LED

A

12" R

12" R

12" Y

(4 REQ'D)

B

(2 REQ'D)

PEDESTRIAN PUSHBUTTON SIGNS

START CROSSING

Watch for Vehicles

DON'T START

Flash Crossing If Stopped

STOP REMAINING To Flash Crossing

DON'T CROSS

PUSH BUTTON TO CROSS

R10-3eL  
9" x 12"  
(1-REQ'D)

START CROSSING

Watch for Vehicles

DON'T START

Flash Crossing If Stopped

STOP REMAINING To Flash Crossing

DON'T CROSS

PUSH BUTTON TO CROSS

R10-3eR  
9" x 12"  
(1-REQ'D)

NOTE:  
THE PEDESTRIAN BUTTON SIGNS ARE TO BE PROVIDED WITH THE PEDESTRIAN PUSH BUTTONS.



CITY OF MOLINE  
ENGINEERING DEPARTMENT  
(309) 524-2350  
3635 4TH AVENUE, MOLINE, IL 61265

SRTS SIGNAGE PROJECT

LOCATION #4: 16TH AVENUE BETWEEN 13TH AND 14TH STREET

HAWK SIGNAL DETAILS 1 / 2

DATE	REVISION



SCALED FOR  
11"X17" PAPER

0' 5' 10'

SCALE: 1" = 10'

Date **10-03-25**

Project **24-00299-00-SG**

Designer **JM**

SHEET

**15**

OF

**16**




H:\Engineering\All Projects\MFT 24-00299-00-SG Safe Routes to School Signing Project\Design Documents\Drawings\MFT 299 Design.dwg

NOTES:  
Electric Cable in Conduit 14-3C will be pulled to Pedestrian Push Buttons.  
Electric Cable in Conduit 14-3C will be pulled to Pedestrian Signal Heads.  
Electric Cable in Conduit 14-5C will be pulled from cabinet to all mast arm bases.


SIGNS

1




S1-1  
36" X 36"  
(2 REQ'D)

2



R10-23  
24" X 30"  
(2 REQ'D)

3

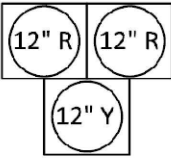


R10-23a  
30" X 36"  
(2 REQ'D)

TRAFFIC SIGNAL FACES


All signal faces shall be LED

A




(4 REQ'D)

B




(2 REQ'D)

PEDESTRIAN  
PUSHBUTTON  
SIGNS



R10-3eL  
9" x 12"  
(1-REQ'D)



R10-3eR  
9" x 12"  
(1-REQ'D)

NOTE:  
THE PEDESTRIAN BUTTON SIGNS  
ARE TO BE PROVIDED WITH THE  
PEDESTRIAN PUSH BUTTONS.



CITY OF MOLINE  
ENGINEERING DEPARTMENT  
(309) 524-2350  
3635 4TH AVENUE, MOLINE, IL 61265

SRTS SIGNAGE PROJECT

LOCATION #7: 41ST STREET BETWEEN 14TH AND 17TH AVENUE

HAWK SIGNAL DETAILS 2 / 2

DATE	REVISION



SCALED FOR  
11"X17" PAPER

0' 5' 10'

SCALE: 1" = 10'

Date **10-03-25**

Project **24-00299-00-SG**

Designer **JM**

SHEET  
**16**  
OF  
**16**