

F.A.P. RTE.	SECTION	COUNTY	TOTAL SHEETS	SHEET NO.
103	29-1-1	ST. CLAIR	8	1
		ILLINOIS	CONTRACT NO. 76E63	

STATE OF ILLINOIS  
DEPARTMENT OF TRANSPORTATION  
DIVISION OF HIGHWAYS

**PROPOSED  
HIGHWAY PLANS**

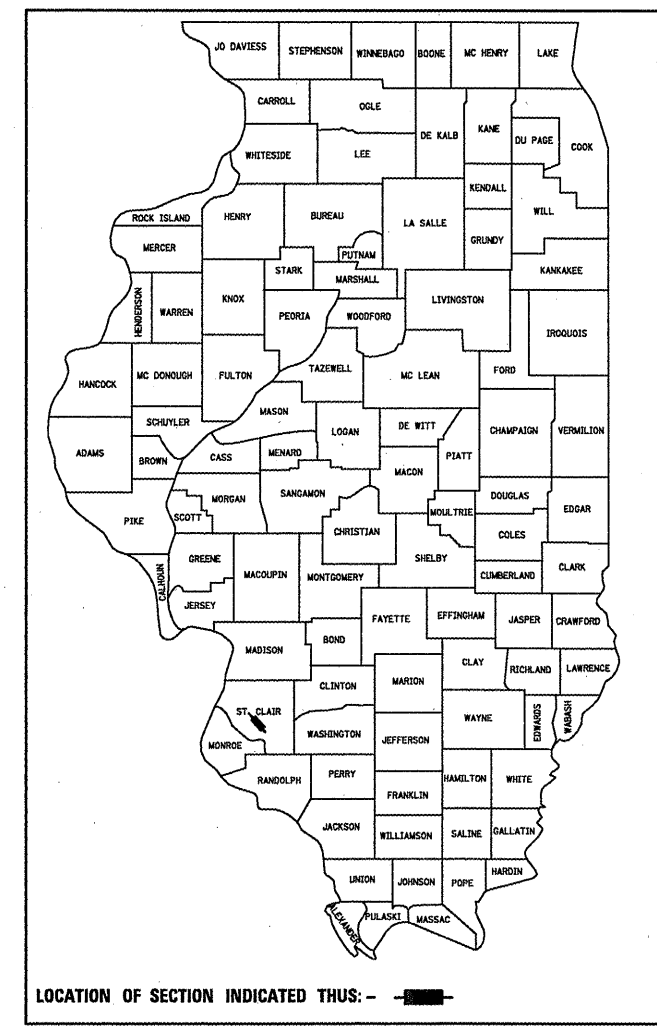
FAP ROUTE 103 (IL 15)  
SECTION 29-1-1

LEFT TURN LANE PAVEMENT  
REMOVAL AND REPLACEMENT  
ST. CLAIR COUNTY

C-98-023-11

FOR INDEX OF SHEETS, SEE SHEET NO. 2

D-98-023-11



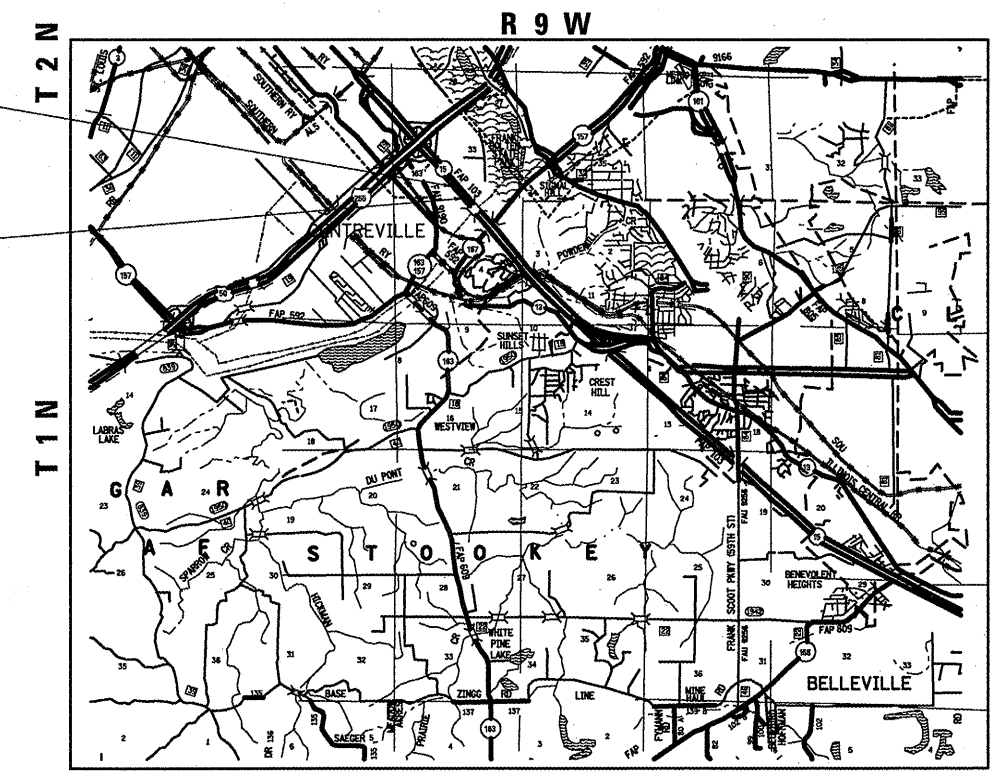
LOCATION OF SECTION INDICATED THIS: - [shaded area]

ADT:	ADT - TURN LANE
2011 36,600	2011 1300
2031 44,700	2031 1600
MU 5.8%	MU 28%
SU 3.2%	SU 12%

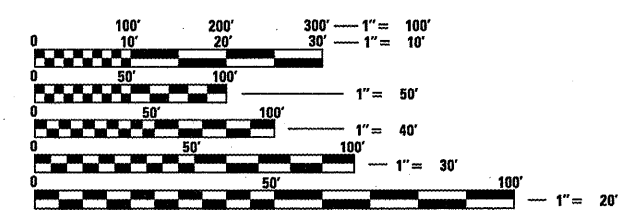
DESIGN DESIGNATION  
NONE

BEGIN IMPROVEMENT  
STA. 132+83.92  
LATITUDE = 38.5764  
LONGITUDE = 90.1011

END IMPROVEMENT  
STA. 138+37.77  
LATITUDE = 38.5764  
LONGITUDE = 90.0991



LOCATION MAP  
NOT TO SCALE



FULL SIZE PLANS HAVE BEEN PREPARED USING STANDARD ENGINEERING SCALES. REDUCED SIZED PLANS WILL NOT CONFORM TO STANDARD SCALES. IN MAKING MEASUREMENTS ON REDUCED PLANS, THE ABOVE SCALES MAY BE USED.

J.U.L.I.E.  
JOINT UTILITY LOCATION INFORMATION FOR EXCAVATION  
1-800-892-0123  
OR 811

PROJECT ENGINEER: PATTI LeBEAU 346-3179  
SQUAD LEADER: ART MUEHLFELD 346-3209

GROSS LENGTH = 553.85 FT. = 0.105 MILE  
NET LENGTH = 553.85 FT. = 0.105 MILE

CONTRACT NO. 76E63

STATE OF ILLINOIS  
DEPARTMENT OF TRANSPORTATION  
DIVISION OF HIGHWAYS

SUBMITTED October 26 20 10  
*[Signature]*  
DEPUTY DIRECTOR OF HIGHWAYS, REGION 5 ENGINEER

Dec 10 20 10  
Scott E. Stett, P.E. *[Signature]*  
acting ENGINEER OF DESIGN AND ENVIRONMENT

Dec 10 20 10  
Christine M. Reed *[Signature]*  
DIRECTOR OF HIGHWAYS, CHIEF ENGINEER

**PRINTED BY THE AUTHORITY  
OF THE STATE OF ILLINOIS**