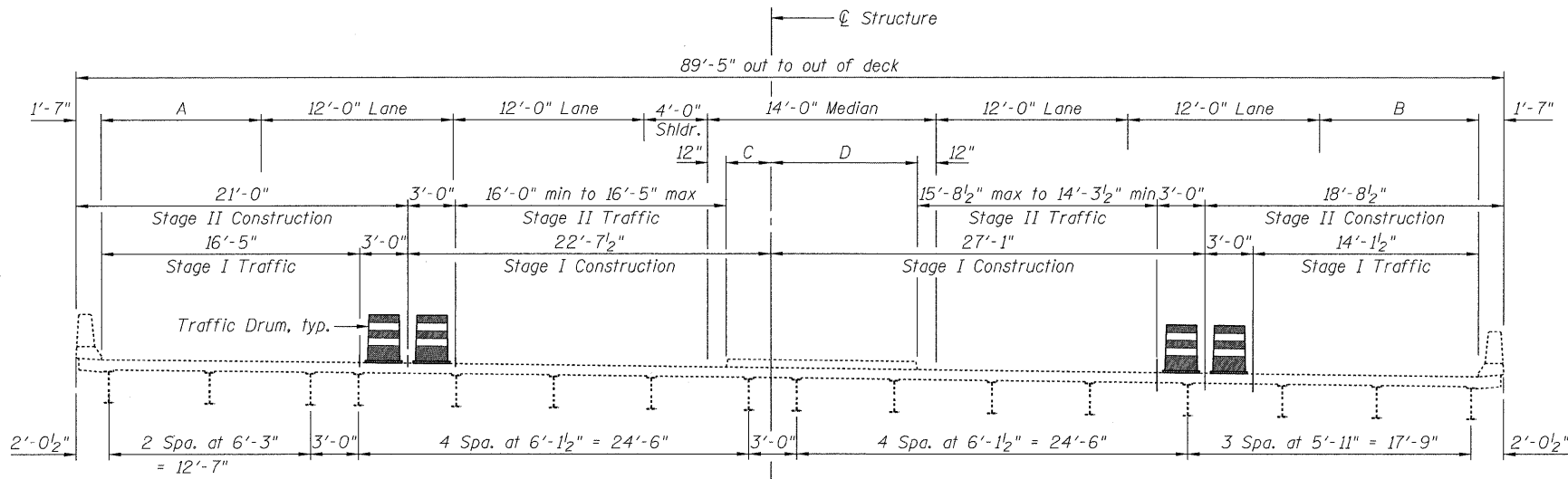


PLAN



CROSS SECTION
(Looking East)

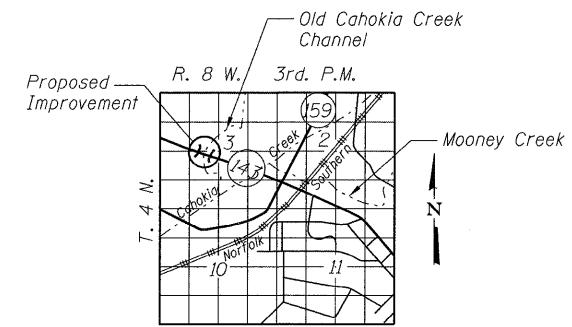
	Back of W. Abut.	Back of E. Abut.
A	9'-5"	10'-10"
B	10'-10"	9'-5"
C	3'-7 1/2"	3'-2 1/2"
D	8'-4 1/2"	9'-9 1/2"

GENERAL NOTES

A Concrete Sealer shall be applied to the surfaces of the deck, median and parapets (See Special Provisions for BRIDGE DECK CONCRETE SEALER).
Existing pavement markings shall be temporarily covered prior to application of the deck surface treatment, to prevent the material from being applied over the markings. The temporary covering shall be removed after the application of the deck surface treatment and prior to opening to traffic. Cost included with Concrete Sealer.

TOTAL BILL OF MATERIAL

ITEM	UNIT	SUPER	SUB	TOTAL
Concrete Sealer	Sq. Ft.	10,900		10,900



LOCATION SKETCH

GENERAL PLAN
IL RTE 143 OVER
OLD CAHOKIA CREEK CHANNEL
F.A.P. RTE 789
SECTION DIST. 8 BRIDGE DECK 2011-4
MADISON COUNTY
STATION 108+82.35
STRUCTURE NUMBER 060-0158

CB Coombe-Bloxdorf P.C.
- CIVIL ENGINEERS -
- STRUCTURAL ENGINEERS -
- LAND SURVEYORS -
Design Firm License No. 184-002703

PROJECT NO. 09025-4	SCALE
DATE 8/16/10	DESIGN BY MCB
DRAWN BY AB/MML	CHECKED BY

F.A. RTE.	SECTION	COUNTY	TOTAL SHEETS	SHEET NO.
VAR.	DIST 8 BRIDGE DECK 2011-4	MADISON	29	19
FED. ROAD DIST. NO.		ILLINOIS FED. AID PROJECT		
SHEET NO. 13		CONTRACT NO. 76E44		
23 SHEETS				