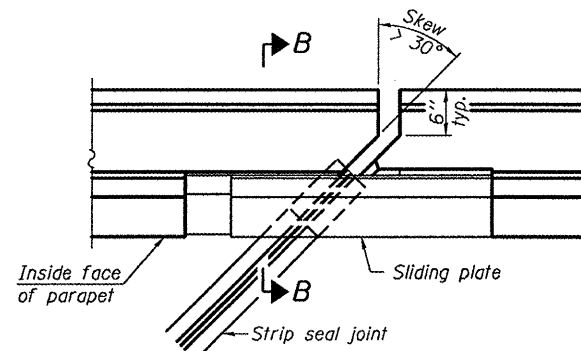
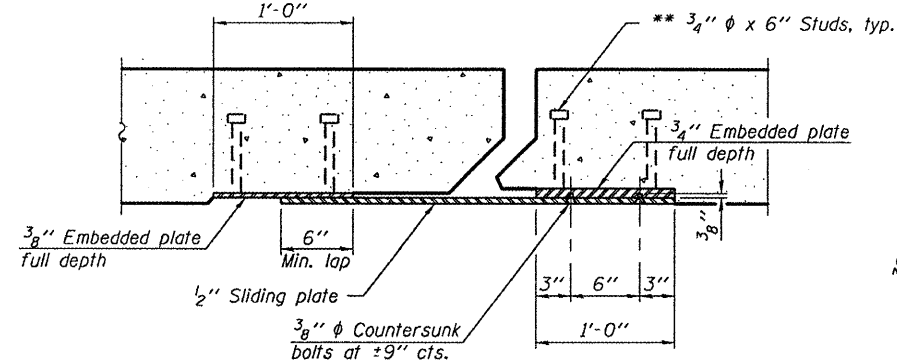


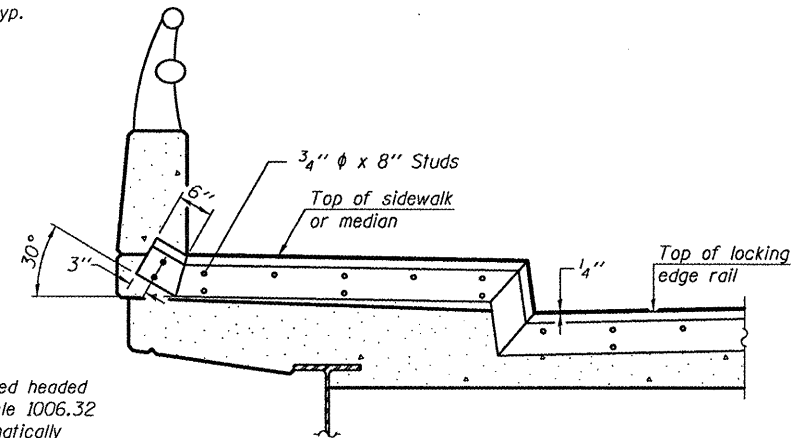
PLAN
(For skews $\leq 30^\circ$)



PLAN
(For skews $> 30^\circ$)
Showing point block

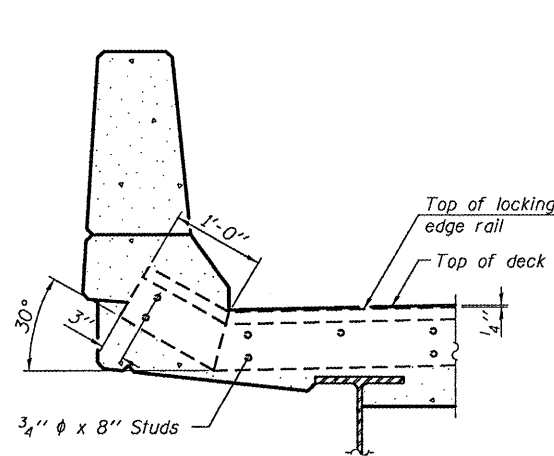


SECTION C-C

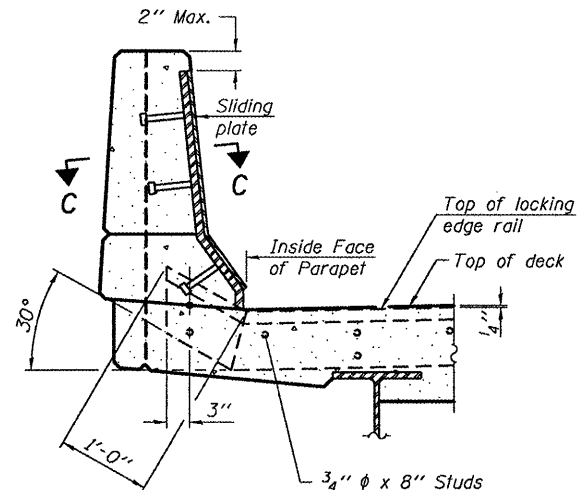


TYPICAL END TREATMENT AT SIDEWALK OR MEDIAN

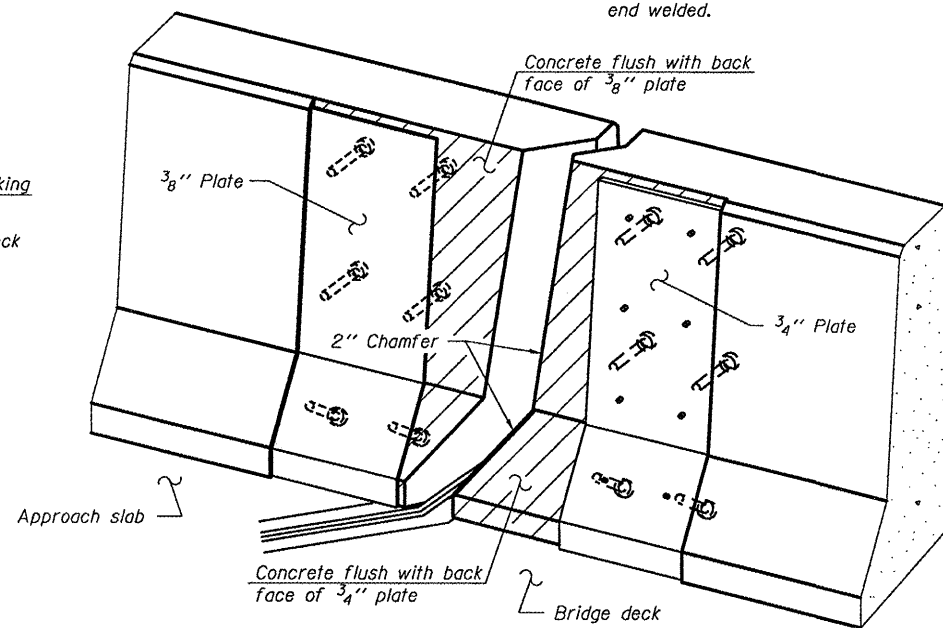
Shorter plates with a single row of studs at 12" cts. may be necessary on medians which are shallower than 9". See manufacturer's recommendation.



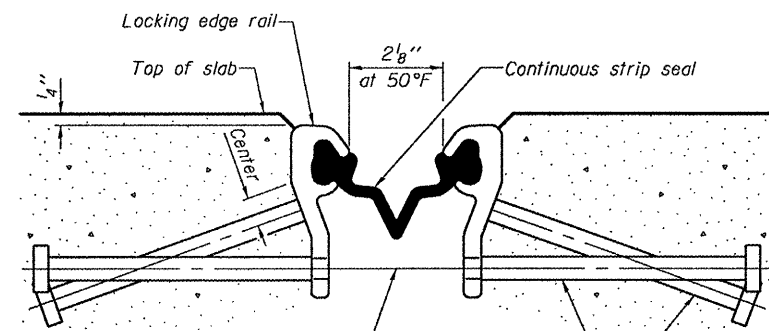
SECTION A-A



SECTION B-B



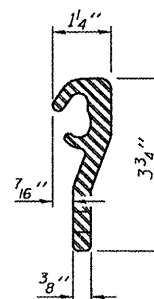
TRIMETRIC VIEW
(Showing back plates only)



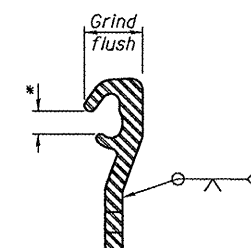
SECTION THRU STRIP SEAL JOINT FOR OVERLAY OVER DECK BEAMS

7/16" ϕ holes at 4'-0" cts. for 3/8" ϕ bolts. All bolts shall be burned, sawed, or chipped off flush with the plates after forms are removed, typ.

Place 1/2" ϕ x 6" granular or solid flux filled headed studs conforming to Article 1006.32 of the Std. Specs., automatically end welded at 1'-0" alt. cts.



LOCKING EDGE RAIL



LOCKING EDGE RAIL SPLICE

* Omit weld at seal opening.

BILL OF MATERIAL

Item	Unit	Total
Preformed Joint Strip Seal	Foot	188

OGDEN AVENUE OVER F.A.I. ROUTE 290

DESIGNED - MKC	EXAMINED - <i>James F. Jell</i>	DATE - JANUARY 13, 2011
CHECKED - ADY	ACTING ENGINEER OF STRUCTURAL SERVICES	
DRAWN - Kyle M. Steffen	PASSED - <i>Carl K...</i>	
CHECKED - MKC ADY	ACTING ENGINEER OF BRIDGES AND STRUCTURES	

STATE OF ILLINOIS DEPARTMENT OF TRANSPORTATION

PREFORMED JOINT STRIP SEAL DETAILS SN 016-0235

SHEET NO. 8 OF 10 SHEETS

F.A.I. RTE.	SECTION	COUNTY	TOTAL SHEETS	SHEET NO.
290	2010-066-1	COOK	19	13
			CONTRACT NO. 60L48	
ILLINOIS FED. AID PROJECT				