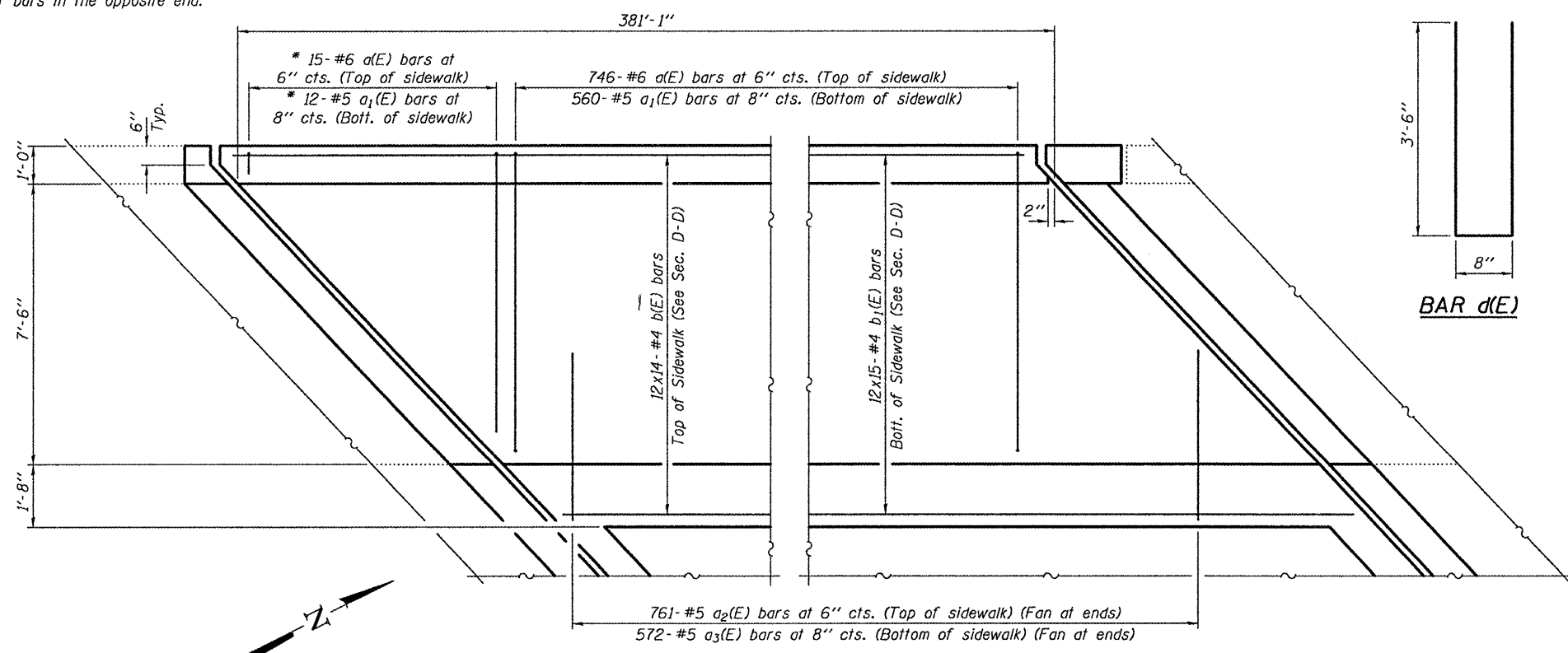


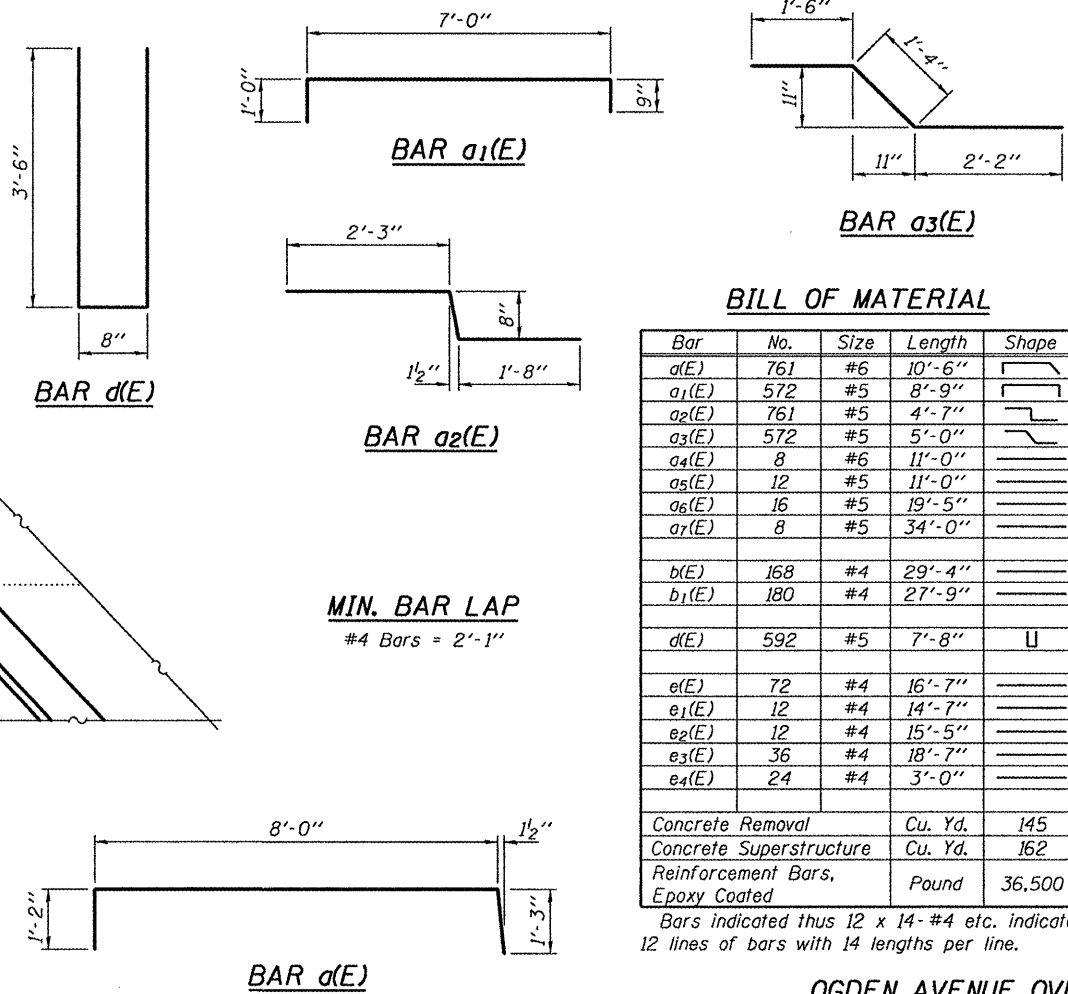
**PARAPET ELEVATION**

See sheet 4 of 10 for Parapet Joint Details and see sheet 6 of 10 for Bridge Fence Railing Details.

\* Order a(E) & a1(E) bars full length. Cut to fit skew and use remainder of bars in the opposite end.



**SIDEWALK SLAB PLAN**



**BILL OF MATERIAL**

Bar	No.	Size	Length	Shape
a(E)	761	#6	10'-6"	U
a1(E)	572	#5	8'-9"	U
a2(E)	761	#5	4'-7"	U
a3(E)	572	#5	5'-0"	U
a4(E)	8	#6	11'-0"	U
a5(E)	12	#5	11'-0"	U
a6(E)	16	#5	19'-5"	U
a7(E)	8	#5	34'-0"	U
b(E)	168	#4	29'-4"	U
b1(E)	180	#4	27'-9"	U
d(E)	592	#5	7'-8"	U
e(E)	72	#4	16'-7"	U
e1(E)	12	#4	14'-7"	U
e2(E)	12	#4	15'-5"	U
e3(E)	36	#4	18'-7"	U
e4(E)	24	#4	3'-0"	U
Concrete Removal		Cu. Yd.	145	
Concrete Superstructure		Cu. Yd.	162	
Reinforcement Bars, Epoxy Coated		Pound	36,500	

Bars indicated thus 12 x 14-#4 etc. indicates 12 lines of bars with 14 lengths per line.

**OGDEN AVENUE OVER F.A.I. ROUTE 290**

DESIGNED - MKC	EXAMINED - <i>Joey F. J...</i>	DATE - JANUARY 13, 2011
CHECKED - ADY	PASSED - <i>Carl Perry</i>	
DRAWN - Kyle M. Steffen	ACTING ENGINEER OF BRIDGES AND STRUCTURES	
CHECKED - MKC ADY		

**STATE OF ILLINOIS DEPARTMENT OF TRANSPORTATION**

**SIDEWALK & PARAPET REPLACEMENT DETAILS SN 016-0235**

F.A.I. RTE. 290	SECTION 2010-066-1	COUNTY COOK	TOTAL SHEETS 19	SHEET NO. 10
			CONTRACT NO. 60L48	
ILLINOIS FED. AID PROJECT				

SHEET NO. 5 OF 10 SHEETS