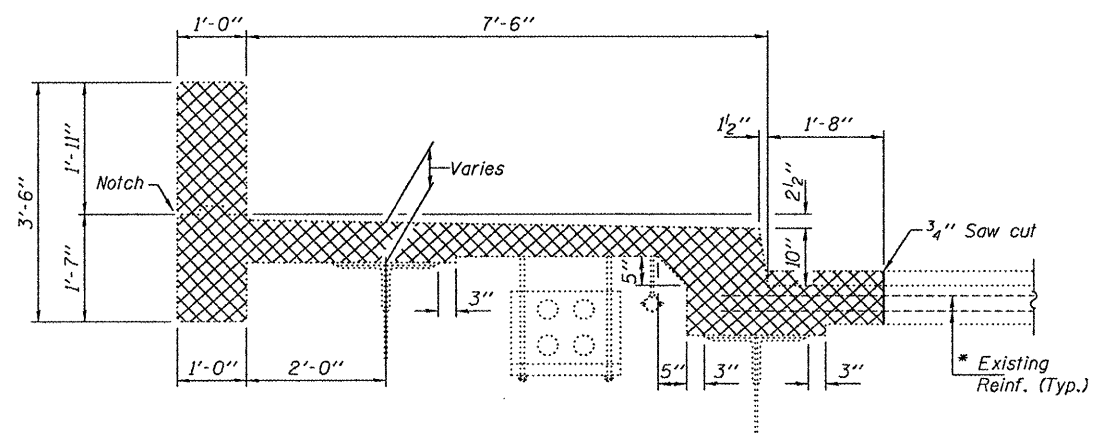


SECTION A-A

* Existing reinforcement bars extending into the removal area shall be cleaned, straightened and incorporated into the new construction. Any reinforcement bars that are damaged during concrete removal shall be replaced with an approved bar splicer or anchorage system. Cost included with Concrete Removal.



SECTION B-B

CONCRETE REMOVAL PLAN

- Indicates areas of Concrete Removal for joint replacement.
- Indicates areas of Concrete Removal for sidewalk replacement.



**OGDEN AVENUE OVER
F.A.I. ROUTE 290**

DESIGNED - MKC	EXAMINED - <i>James F. Jell</i>	DATE - JANUARY 13, 2011
CHECKED - ADY	ACTING ENGINEER OF STRUCTURAL SERVICES	
DRAWN - Kyle M. Steffen	PASSED - <i>Carl Perry</i>	
CHECKED - MKC ADY	ACTING ENGINEER OF BRIDGES AND STRUCTURES	

**STATE OF ILLINOIS
DEPARTMENT OF TRANSPORTATION**

**CONCRETE REMOVAL DETAILS
SN 016-0235**

F.A.I. RTE.	SECTION	COUNTY	TOTAL SHEETS	SHEET NO.
290	2010-066-1	COOK	19	8
CONTRACT NO. 60L48			ILLINOIS FED. AID PROJECT	

SHEET NO. 3 OF 10 SHEETS