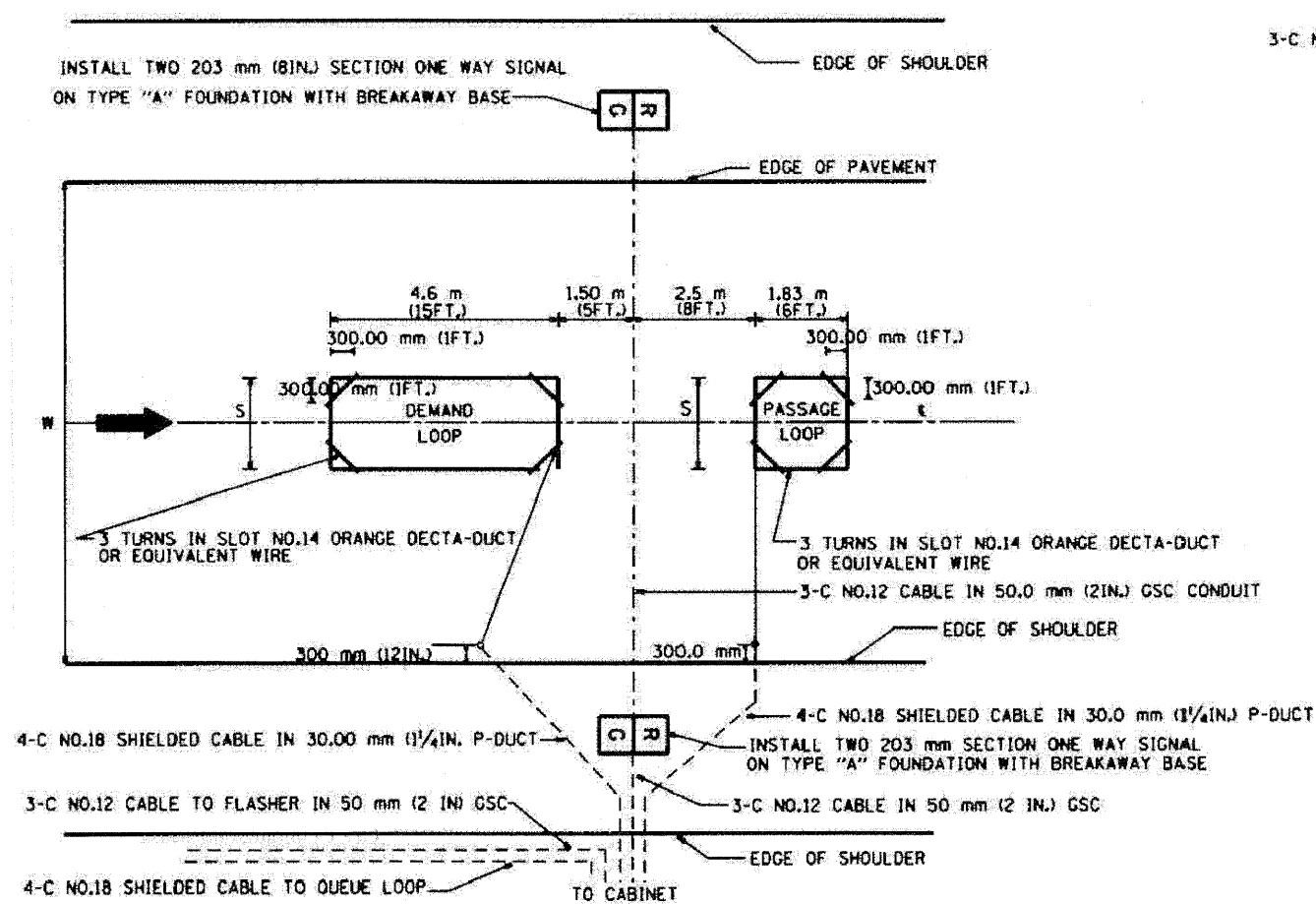
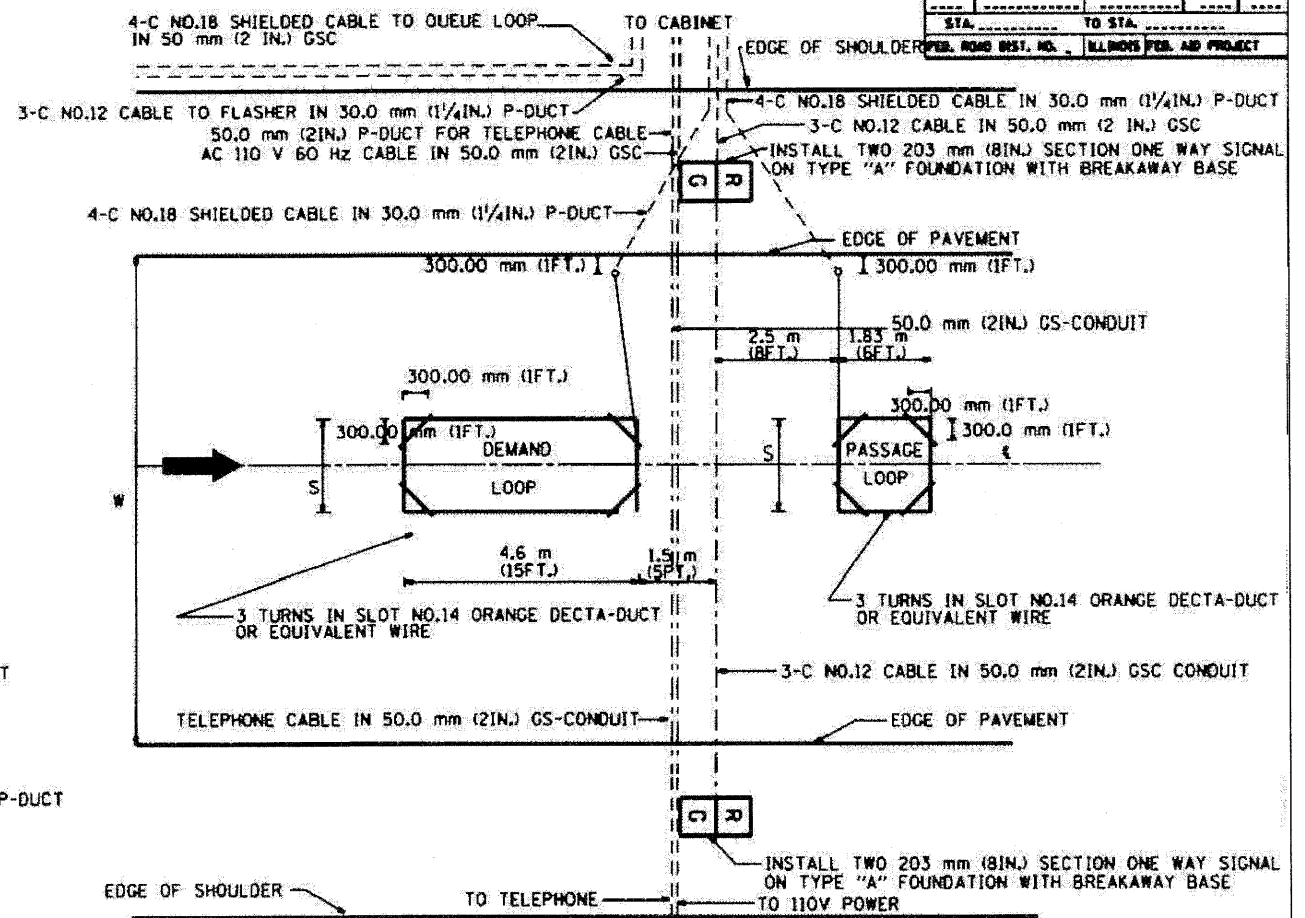


F.A. RTE.	SECTION	COUNTY	TOTAL SHEETS	SHEET NO.
290	(2525, ETC., 2727)RS-8	COOK	201	167
STA. TO STA.		ILLINOIS FED. AID PROJECT		



TYPICAL SIGNAL AND LOOP LAYOUT (TYPE I)

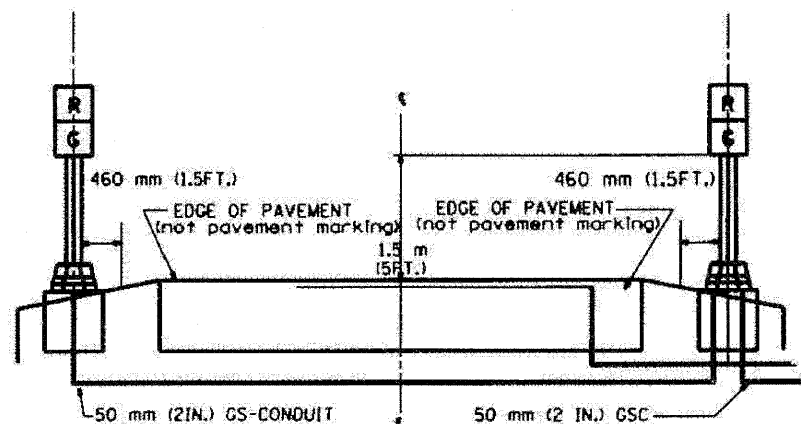


TYPICAL SIGNAL AND LOOP LAYOUT (TYPE II)

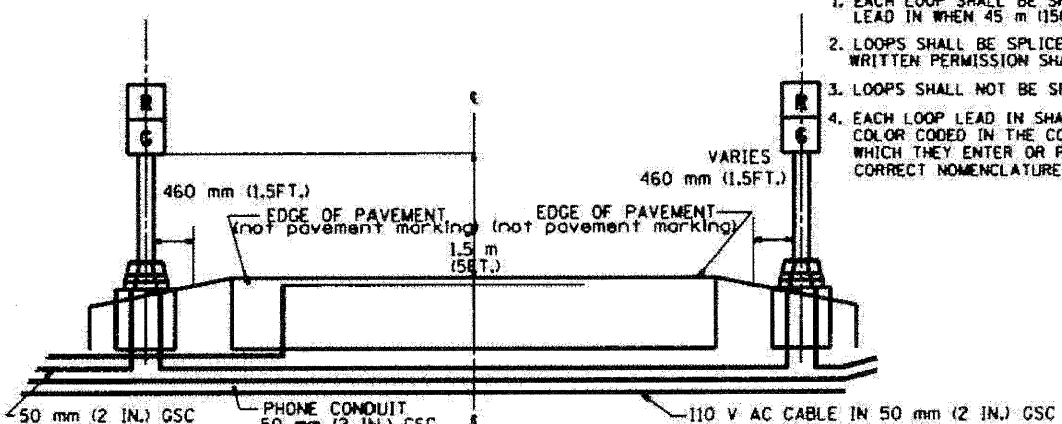
NOTE: ALL SIGNALS & FOUNDATIONS SHALL BE FIELD LOCATED FOR ACTUAL SITE AND TRAFFIC CONDITIONS.

- NOTES
1. EACH LOOP SHALL BE SPLICED TO A 4-C NO.18 TWISTED SHIELDED LEAD IN WHEN 45 m (150FT.) OR MORE FROM CABINET.
 2. LOOPS SHALL BE SPLICED IN HANDHOLES ONLY, OTHERWISE WRITTEN PERMISSION SHALL BE OBTAINED FROM TSC ENGINEER.
 3. LOOPS SHALL NOT BE SPLICED IN SERIES.
 4. EACH LOOP LEAD IN SHALL BE IDENTIFIED AND PERMANENTLY COLOR CODED IN THE COREHOLE, HANDHOLE & CABINETS THRU WHICH THEY ENTER OR PASS AND TAGGED WITH THE CORRECT NOMENCLATURES.

WIDTH (W)	WIDTH (S)
3.7 m (12')	2.5 m (8')
4.0 m (13')	2.8 m (9')
4.3 m (14')	3.1 m (10')
4.6 m (15')	3.4 m (11')
4.9 m (16')	3.7 m (12')
5.2 m (17')	4.0 m (13')
5.5 m (18')	4.3 m (14')
5.8 m (19')	4.6 m (15')
6.1 m (20')	4.9 m (16')
6.4 m (21')	5.2 m (17')
6.7 m (22')	5.5 m (18')
7.0 m (23')	5.8 m (19')
7.3 m (24')	6.1 m (20')
7.6 m (25')	6.4 m (21')



SECTION



SECTION

REVISIONS		ILLINOIS DEPARTMENT OF TRANSPORTATION TRAFFIC SYSTEMS CENTER
NO.	DATE	
		TYPICAL RAMP METERING INSTALLATION TYPE I & II (FOR RAMP WITHOUT CURBS & CUTTERS) SCALE: VERT. NONE HORIZ. 1"=10' DATE 6-22-94 DRAWN BY G.M. CHECKED BY R.L.

TRAFFIC SYSTEMS CENTER (TY-1TSC-400#1)

FILE NAME =	DESIGNED - GHT	REVISED -
...prpIn_ABC_C3_TS_DE1_01.dgn	DRAWN - DMS	REVISED -
USER NAME = jmajewski	CHECKED - MPM	REVISED -
PLOT DATE = 1/25/2010	DATE - 1/25/10	REVISED -

benesch

**STATE OF ILLINOIS
DEPARTMENT OF TRANSPORTATION**

**TRAFFIC SYSTEM CENTER
DETAIL SHEETS**

SCALE: N.T.S. SHEET NO. 9 OF 23 SHEETS STA. TO STA.

F.A. RTE.	SECTION	COUNTY	TOTAL SHEETS	SHEET NO.
290	(2525, ETC., 2727)RS-8	COOK	201	167
STA. TO STA.		CONTRACT NO. 60K11		
FED. ROAD DIST. NO.		ILLINOIS FED. AID PROJECT		