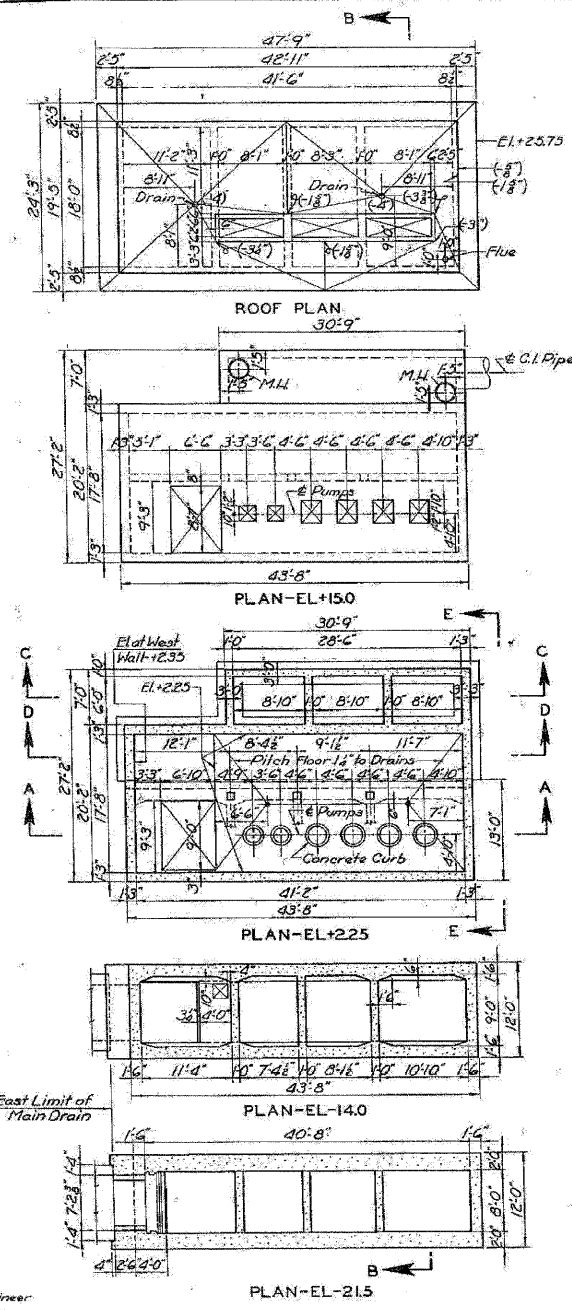
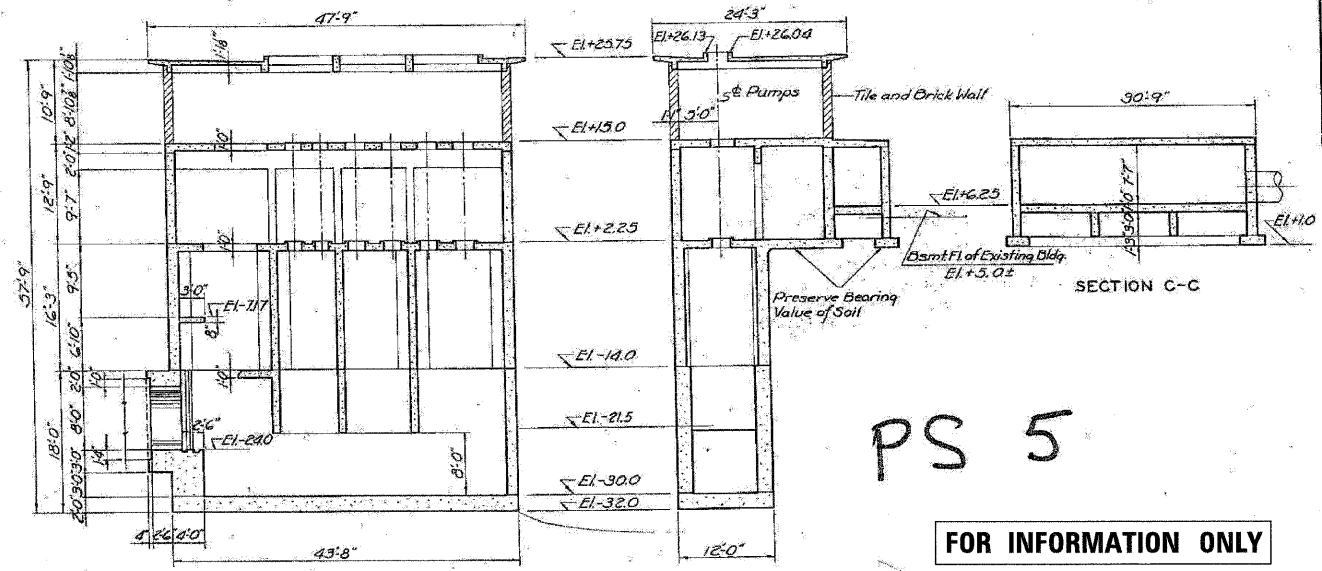


SECTION	2424.15-D	COUNTY	COOK	DATE	3E
PROJECT	PUMPING STATION AND DISCHARGE CONDUIT				



Figures thus given (-) on Roof Plan indicate distances below EL+25.75 Bottom of slab is level



PS 5

FOR INFORMATION ONLY

- Notes:
- Base Slab and Details
 - North and South Walls
 - East and West Walls
 - Plan of Elev. +2.25
 - Plan of Elev. +3.00
 - Roof Plan
 - Plan and Profile
 - General Details
 - Architectural Details
 - Electrical Details
 - Mechanical Details
- Sheet No. 9
 - Sheet No. 10
 - Sheet No. 11
 - Sheet No. 12
 - Sheet No. 13
 - Sheet No. 16
 - Sheet No. 2
 - Sheet Nos. 6 & 7
 - Sheet Nos. 13, 17 & 18
 - Sheet No. 21
 - Sheet Hold

Designed By: R. Solheim
 Drawn By: A.J. Gonzalez
 Traced By: W. Wood
 Checked By: K.C. Williams
 Approved By: John J. Kelly
 Subway Structural Engineer

CITY OF CHICAGO
 DEPARTMENT OF SUBWAYS AND SUPERHIGHWAYS
 WEST ROUTE SUPERHIGHWAY
 SECTION 2424.15-D
 PUMPING STATION AND DISCHARGE CONDUIT
 S. DESPLAINES ST. TO S. BRANCH OF CHICAGO RIVER
 PUMPING STATION
 PLANS AND SECTIONS
 SCALE: AS NOTED
 SHEET NO. 6 OF 32 SHEETS
 FEBRUARY 1951

Scale of Tracing
 1/8" = 1'-0"
 0 2 4 6 8 16"

FILE NAME =	DESIGNED - SGL	REVISED -
#FILE#	DRAWN - SGL	REVISED -
USER NAME = #USER#	CHECKED - FML	REVISED -
PLOT DATE = #DATE#	DATE - 1/25/10	REVISED -

E LIN ENGINEERING, LTD.
 Consulting Engineers
 Chatham, Illinois Walnut, Illinois

STATE OF ILLINOIS
 DEPARTMENT OF TRANSPORTATION

PUMP STATION NO. 5
 RECORD DRAWINGS

SCALE: SHEET NO. 2 OF 4 SHEETS STA. TO STA.

F.A.I. RTE.	SECTION	COUNTY	TOTAL SHEETS	SHEET NO.
290	(2525, ETC., 2727)	RS-8	COOK	201 156
			CONTRACT NO. 60K11	
ILLINOIS FED. AID PROJECT				