

FOR INDEX OF SHEETS, SEE SHEET NO. 2.

TRAFFIC DATA

ADT = 204,600 VEHICLES
POSTED SPEED LIMIT = 55 MPH

PROJECT LOCATED IN THE CITY OF CHICAGO

STATE OF ILLINOIS
DEPARTMENT OF TRANSPORTATION
DIVISION OF HIGHWAYS
PROPOSED
HIGHWAY PLANS
FAI-290 (EISENHOWER EXPRESSWAY)
SECTION (2525, ETC., 2727)RS-8
PROJECT: ACIM-290-4(115)097
SACRAMENTO BLVD. TO I-90 / 94
RESURFACING, SIGNING AND SURVEILLANCE
COOK COUNTY
C-91-415-10

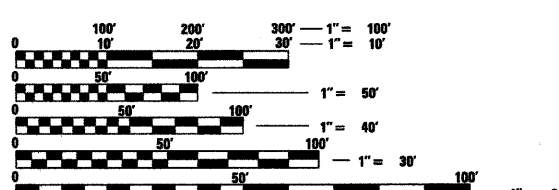
F.A.I. RTE.	SECTION	COUNTY	TOTAL SHEETS	SHEET NO.
290	(2525, ETC., 2727)RS-8	COOK	201	1
FED. ROAD DIST. NO.	ILLINOIS	CONTRACT NO. 60K11		

*201+1=202

D-91-341-09



LOCATION OF SECTION INDICATED THUS: —

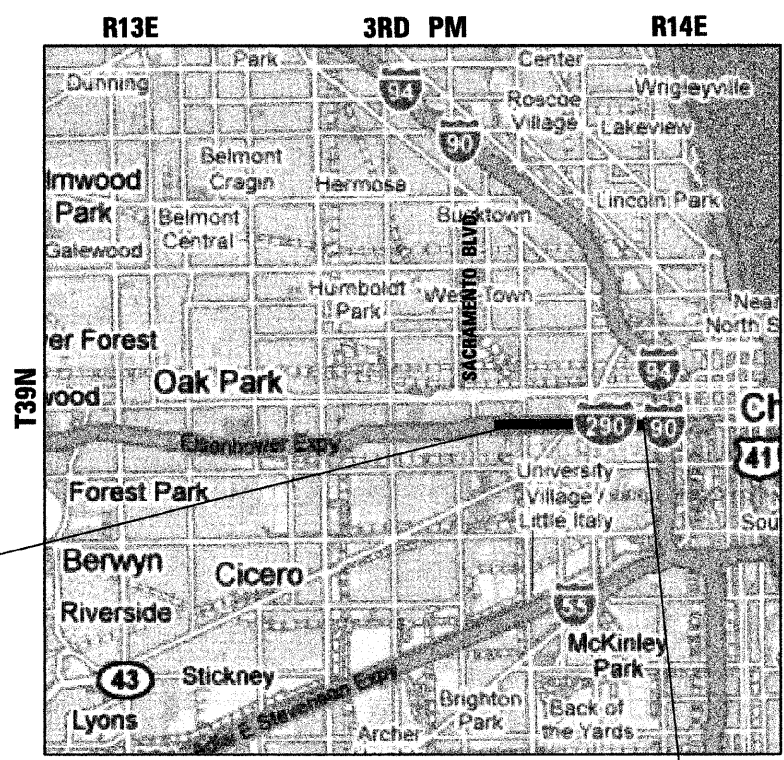


FULL SIZE PLANS HAVE BEEN PREPARED USING STANDARD ENGINEERING SCALES. REDUCED SIZED PLANS WILL NOT CONFORM TO STANDARD SCALES. IN MAKING MEASUREMENTS ON REDUCED PLANS, THE ABOVE SCALES MAY BE USED.

C.U.A.N.
CHICAGO UTILITY AREA NETWORK
1-312-744-7000
OR 811

PROJECT ENGINEER: CRAIG BAUER (847) 705-4265
PROJECT MANAGER: LONG TRAN (847) 705-4232

CONTRACT NO. 60K11



PROJECT BEGINS
STA. 1072+00

PROJECT ENDS
STA. 1215+15 (WB)
STA. 1214+90 (EB)

LAYOUT MAP
SCALE: 1 IN = 1.5 MI

GROSS LENGTH OF PROJECT = 14,315 LIN FT = 2.71 MILES
NET LENGTH OF PROJECT = 14,315 LIN FT = 2.71 MILES

KURT J. NAUS
LICENSED PROFESSIONAL ENGINEER
STATE OF ILLINOIS
EXPIRATION DATE 11-30-11
DATE 1-22-10

FRED M. LIN
LICENSED PROFESSIONAL ENGINEER
STATE OF ILLINOIS
EXPIRATION DATE 11-30-11
DATE 1-22-10

STATE OF ILLINOIS
DEPARTMENT OF TRANSPORTATION
DIVISION OF HIGHWAYS
SUBMITTED JANUARY 22, 2010
Diana M. O'Keefe
DEPUTY DIRECTOR OF HIGHWAYS, REGION ENGINEER
January 29, 2010
Scott E. Stett, P.E.
ENGINEER OF DESIGN AND ENVIRONMENT
January 29, 2010
Christine M. Reed
DIRECTOR OF HIGHWAYS, CHIEF ENGINEER

PRINTED BY THE AUTHORITY OF THE STATE OF ILLINOIS

benesch
alfred benesch & company
Engineers • Surveyors • Planners
205 North Michigan Avenue, Suite 2400
Chicago, Illinois 60601
312-565-0450

LIN ENGINEERING, LTD.
Consulting Engineers
Chatham, Illinois Westmont, Illinois