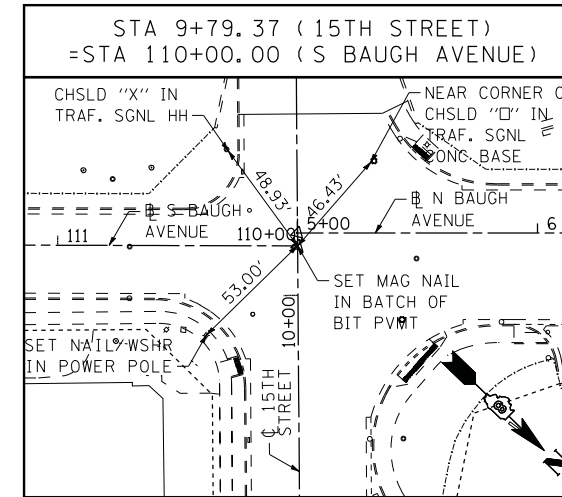
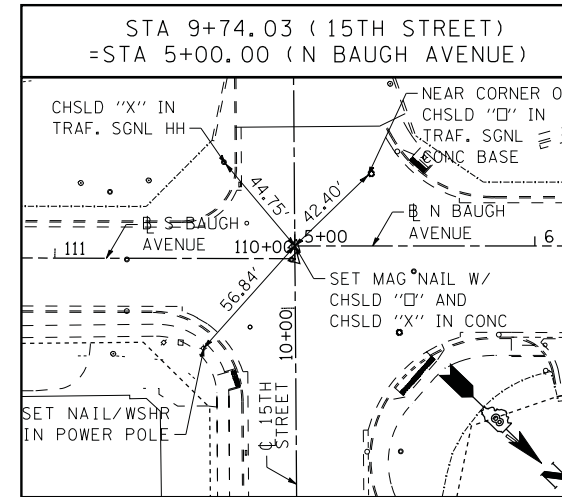
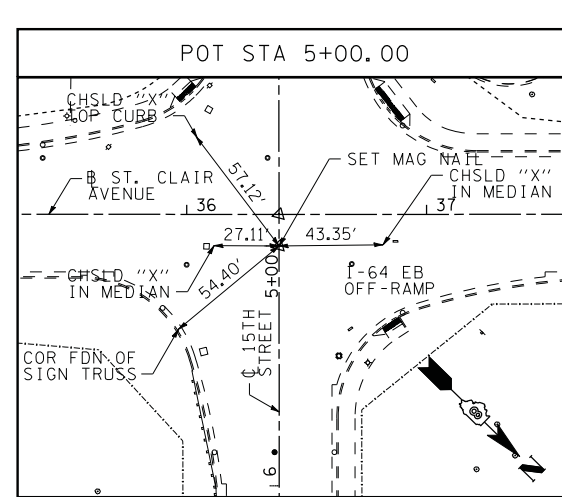
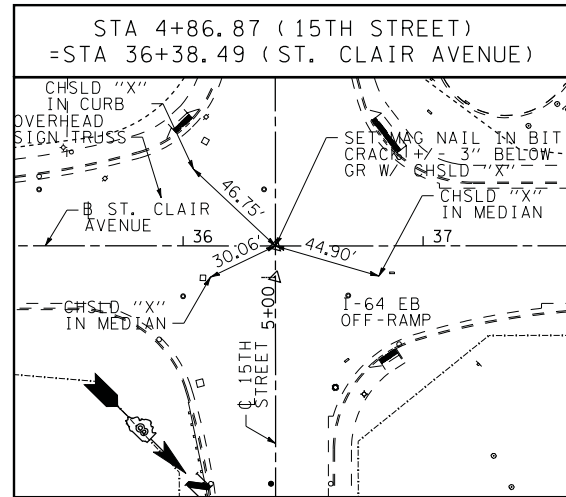
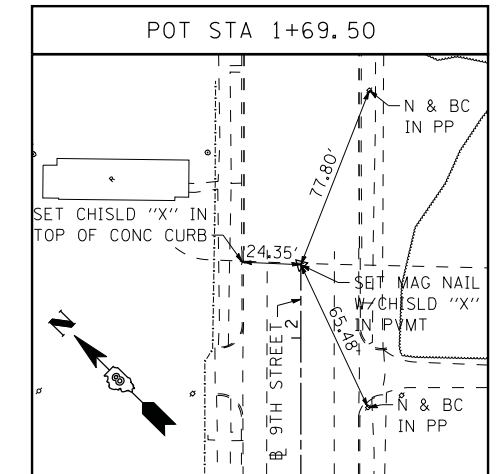


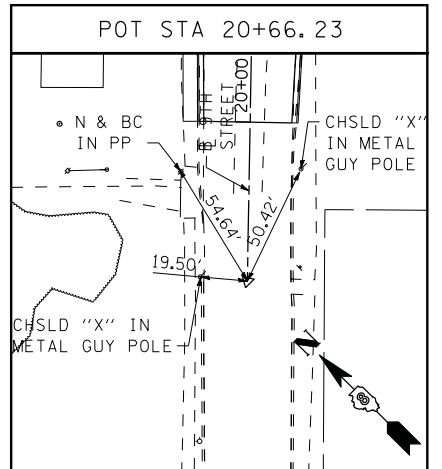
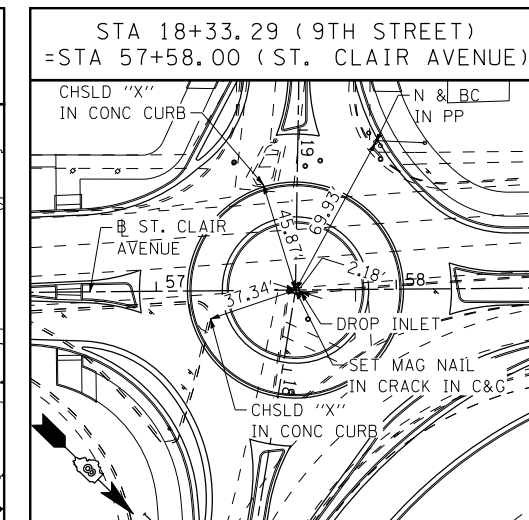
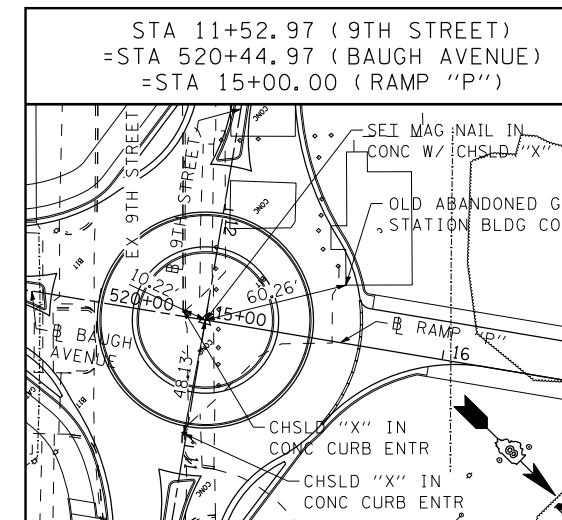
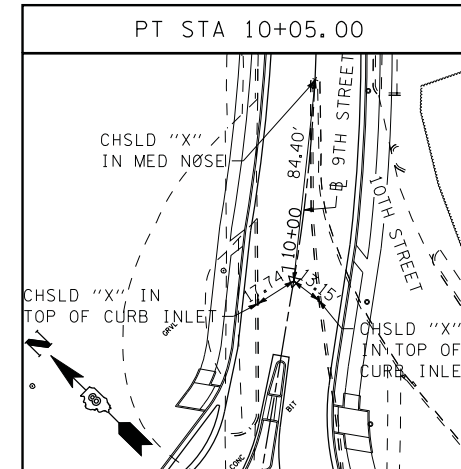
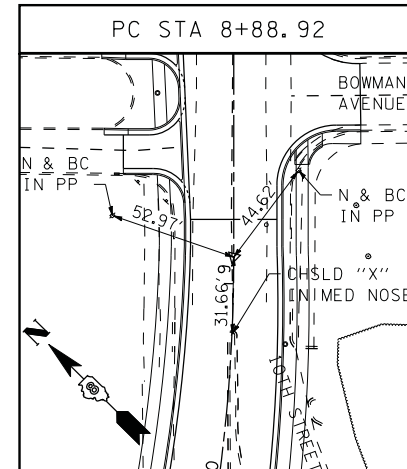
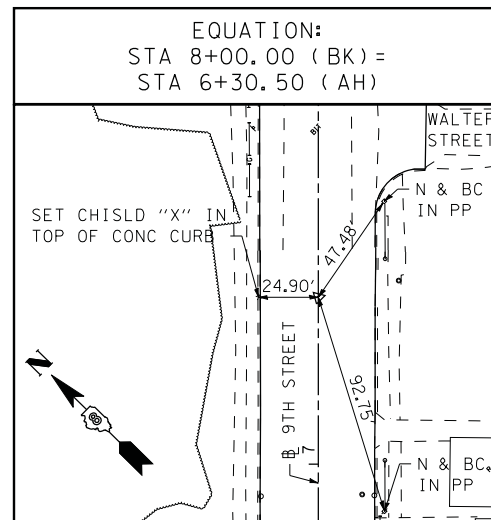
15TH STREET CENTERLINE



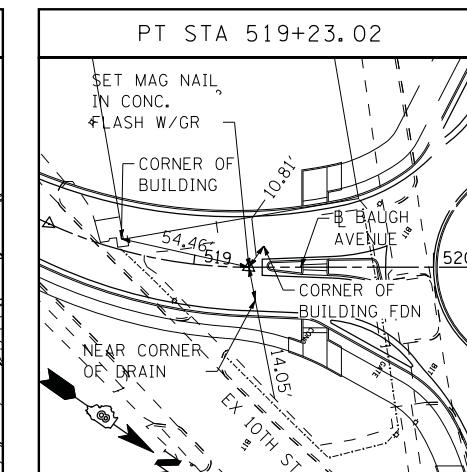
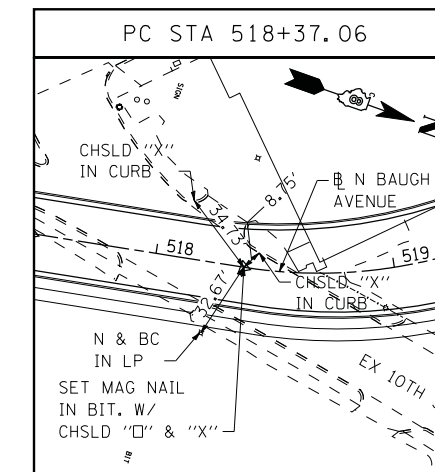
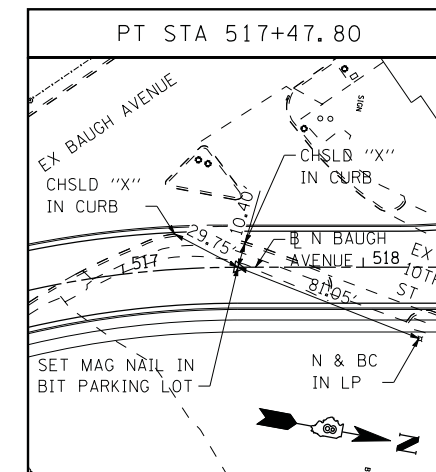
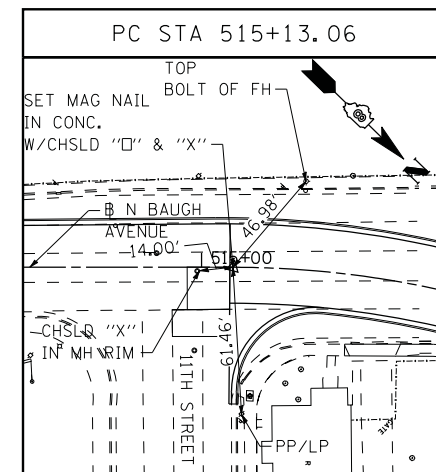
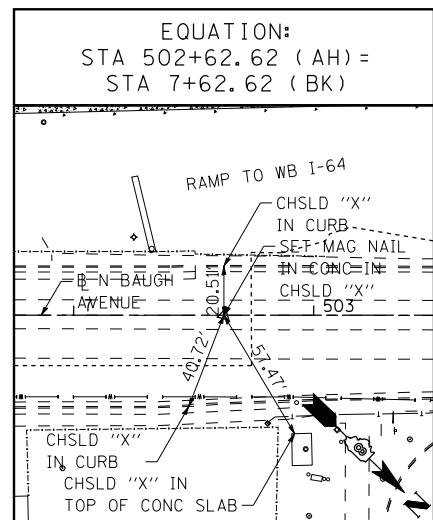
9TH STREET BASELINE



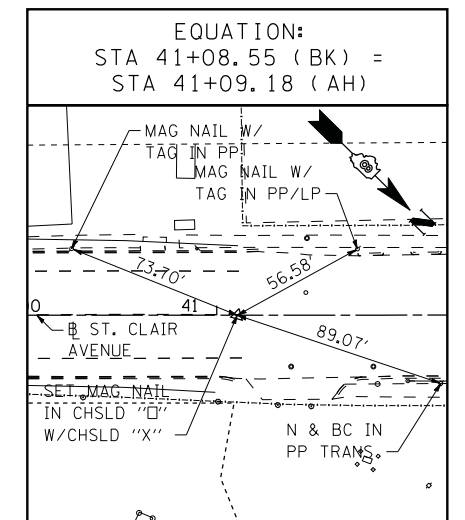
9TH STREET BASELINE



BAUGH AVENUE BASELINE



ST. CLAIR AVENUE BASELINE



NOTE:
INFORMATION ON THIS SHEET
IS FROM CONTRACT 76C51.

STATE OF ILLINOIS
DEPARTMENT OF TRANSPORTATION

ALIGNMENT, TIES, AND BENCHMARKS

FA.U. RTE.	SECTION	COUNTY	TOTAL SHEETS	SHEET NO.
9214	82-1-12LS	ST. CLAIR	29	7
CONTRACT NO. 76F35				

6/8/2011 10:09:30 AM

FILE NAME = DBTRI-76C51-sht-aligntiebm-01-04.dgn

USER NAME = jlt

MODEL NAME = DBTRI-76C51-sht-aligntiebm-03

PLOT SCALE = 1:40

PLOT DATE = 6/8/2011

DESIGNED - LDC

DRAWN - JDF

CHECKED - GEB

DATE = 03/31/11

REVISED -

REVISED -

REVISED -

REVISED -

P:\08-0030 CTE TRILEVEL\900.CAD\901_DRAWINGS\08.CONTRACT\SHEET\CTV\GENERAL\DBTRI-76C51-SHT-ALIGN-TIEBM-01-04.DGN

SCALE: NONE SHEET NO. 3 OF 4 SHEETS STA. ----- TO STA. -----

FED. ROAD DIST. NO. [ILLINOIS] FED. AID PROJECT