

01-30-15 LETTING ITEM 080

STATE OF ILLINOIS  
DEPARTMENT OF TRANSPORTATION  
DIVISION OF HIGHWAYS

**PROPOSED  
HIGHWAY PLANS**

VARIOUS ROUTES  
SECTION D5 LIGHTING REPAIRS 2015-1

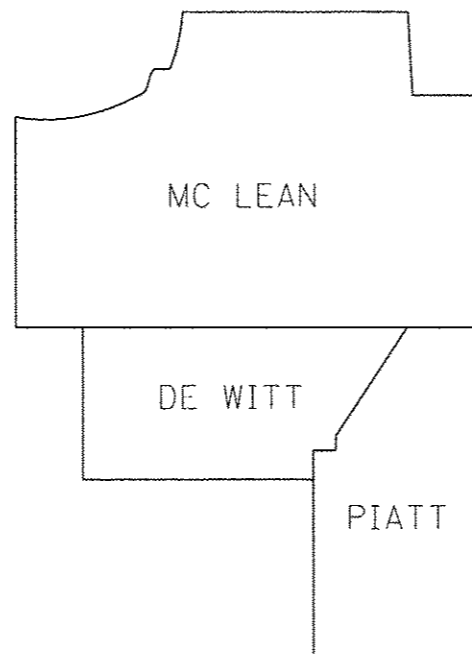
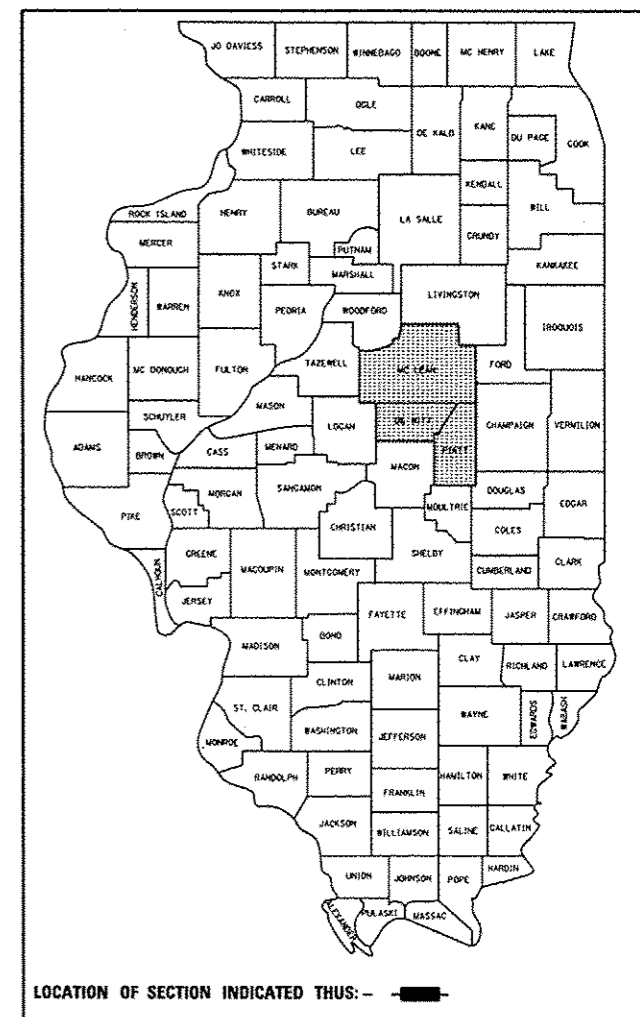
WEST FIELD AREA ON-CALL LIGHTING REPAIRS  
VARIOUS COUNTIES

C-95-016-15

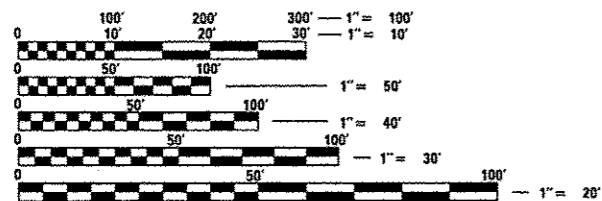
F.A. RTE.	SECTION	COUNTY	TOTAL SHEETS	SHEET NO.
VAR.	*	VARIOUS	3	1
		ILLINOIS	CONTRACT NO. 70B20	

\*D5 LIGHTING REPAIRS 2015-1

D-95-016-15



FOR INDEX OF SHEETS, SEE SHEET NO. 2  
FOR SUMMARY OF QUANTITIES, SEE SHEET NO. 3



FULL SIZE PLANS HAVE BEEN PREPARED USING STANDARD ENGINEERING SCALES. REDUCED SIZED PLANS WILL NOT CONFORM TO STANDARD SCALES. IN MAKING MEASUREMENTS ON REDUCED PLANS, THE ABOVE SCALES MAY BE USED.

J.U.L.I.E.  
JOINT UTILITY LOCATION INFORMATION FOR EXCAVATION  
1-800-892-0123  
OR 811

PROJECT ENGINEER JASON STULTS  
PHONE NUMBER (217) 465-4181

CONTRACT NO. 70B20

STATE OF ILLINOIS  
DEPARTMENT OF TRANSPORTATION  
DIVISION OF HIGHWAYS

SUBMITTED October 29 20 14

James A. [Signature]  
DEPUTY DIRECTOR OF HIGHWAYS, REGION ENGINEER

Nov 14 20 14

[Signature] ENGINEER OF DESIGN AND ENVIRONMENT

Nov 14 20 14

Omer Osman, PE [Signature]  
DIRECTOR OF HIGHWAYS, CHIEF ENGINEER

PRINTED BY THE AUTHORITY  
OF THE STATE OF ILLINOIS

# INDEX OF SHEETS

SHEET NO.	DESCRIPTION
1	COVER SHEET
2	INDEX OF SHEETS
2	HIGHWAY STANDARDS
2	GENERAL NOTES
3	SUMMARY OF QUANTITIES

# HIGHWAY STANDARDS

STANDARD NUMBER	NAME OF STANDARD
000001-06	STANDARD SYMBOLS, ABBREVIATIONS AND PATTERNS
001006	DECIMAL OF AN INCH AND OF A FOOT
701001-02	OFF-ROAD OPERATIONS, 2L, 2W, MORE THAN 15' (4.5 M) AWAY
701006-05	OFF-ROAD OPERATIONS, 2L, 2W, 15' (4.5 M) TO 24" (600 MM) FROM PAVEMENT EDGE
701101-04	OFF-ROAD OPERATIONS, MULTILANE, 15' (4.5 M) TO 24" (600 MM) FROM PAVEMENT EDGE
701106-02	OFF-ROAD OPERATIONS, MULTILANE, MORE THAN 15' (4.5 M) AWAY
701201-04	LANE CLOSURE, 2L, 2W, DAY ONLY, FOR SPEEDS ≥ 45 MPH
701206-03	LANE CLOSURE, 2L, 2W, NIGHT ONLY, FOR SPEEDS ≥ 45 MPH
701301-04	LANE CLOSURE, 2L, 2W, SHORT TIME OPERATIONS
701306-03	LANE CLOSURE, 2L, 2W, SLOW MOVING OPERATIONS DAY ONLY ≥ 45 MPH
701400-07	APPROACH TO LANE CLOSURE, FREEWAY/EXPRESSWAY
701401-08	LANE CLOSURE, FREEWAY/EXPRESSWAY
701406-08	LANE CLOSURE, FREEWAY/EXPRESSWAY, DAY OPERATIONS ONLY
701411-08	LANE CLOSURE, MULTILANE, AT ENTRANCE OR EXIT RAMP, FOR SPEEDS ≥ 45 MPH
701421-06	LANE CLOSURE, MULTILANE, DAY OPERATIONS ONLY, FOR SPEEDS ≥ 45 MPH TO 55 MPH
701422-06	LANE CLOSURE, MULTILANE, FOR SPEEDS ≥ 45 MPH TO 55 MPH
701426-06	LANE CLOSURE, MULTILANE, INTERMITTENT OR MOVING OPERATION, FOR SPEEDS ≥ 45 MPH
701427-02	LANE CLOSURE, MULTILANE, INTERMITTENT OR MOVING OPERATION, FOR SPEEDS ≤ 40 MPH
701456-03	PARTIAL EXIT RAMP CLOSURE FREEWAY/EXPRESSWAY
701501-06	URBAN LANE CLOSURE, 2L, 2W, UNDIVIDED
701502-06	URBAN LANE CLOSURE, 2L, 2W, WITH BIDIRECTIONAL LEFT TURN LANE
701601-09	URBAN LANE CLOSURE, MULTILANE, 1W OR 2W WITH NONTRAVERSABLE MEDIAN
701602-07	URBAN LANE CLOSURE, MULTILANE, 2W WITH BIDIRECTIONAL LEFT TURN LANE
701606-09	URBAN LANE CLOSURE, MULTILANE, 2W WITH MOUNTABLE MEDIAN
701701-09	URBAN LANE CLOSURE, MULTILANE INTERSECTION
701901-03	TRAFFIC CONTROL DEVICES

# GENERAL NOTES

G. N. -100  
ENGLISH UNITS OF MEASUREMENT SHALL GOVERN OVER AND SUPERSEDE ANY METRIC UNITS SHOWN IN THIS CONTRACT. WHERE INCLUDED, METRIC UNITS ARE FOR INFORMATION ONLY.

G. N. -100A  
ELECTRONIC FILES AND/OR ELECTRONIC SURVEY INFORMATION INCLUDING CADD FILES WILL NOT BE AVAILABLE TO THE CONTRACTOR.

NO COMMITMENTS

FILE NAME =	USER NAME = omar1004_d	DESIGNED -	REVISED -	<b>STATE OF ILLINOIS DEPARTMENT OF TRANSPORTATION</b>	<b>INDEX OF SHEETS, HIGHWAY STANDARDS &amp; GENERAL NOTES</b>	F.A. RTE.	SECTION	COUNTY	TOTAL SHEETS	SHEET NO.	
p:\11\284848\BID\INTEC\illinois.gov\WIDOT\Documents\IDOT Offices\District 03\Projects\057\DRAWINGData\EA0\sheet\0570820-sht-genn	DRAWING DATA = EA0\sheet\0570820-sht-genn	CHECKED -	REVISED -			VAR.	*	VARIOUS	3	2	
PLOT SCALE = 48.0000' / in.	CHECKED -	REVISED -	REVISED -			*05 LIGHTING REPAIRS 2015-1 CONTRACT NO. 70B20					
PLOT DATE = 10/31/2014	DATE -	REVISED -	REVISED -			ILLINOIS FED. AID PROJECT					
SCALE:	SHEET 1	OF 1	SHEETS	STA.	TO STA.						

# SUMMARY OF QUANTITIES

LOCATION OF WORK:

VARIOUS ROUTES      VARIOUS ROUTES      VARIOUS ROUTES

|----- VARIOUS COUNTIES -----|

0740                      0760                      0740

CONSTRUCTION TYPE CODE:

0021                      0021                      0021

CODE NO	ITEM	UNIT	TOTAL QUANTITY	100% MCHD	100% STATE Contract Maint	100% STATE ITS
XP000001	JOURNEYMAN ELECTRICIAN	HOUR	825.0	100.0	525.0	200.0
XP000002	APPRENTICE ELECTRICIAN	HOUR	450.0	50.0	300.0	100.0
XP000009	PICK-UP TRUCK	HOUR	725.0	100.0	450.0	175.0
XP000010	BUCKET TRUCK (LENGTH LESS THAN 35 FEET)	HOUR	290.0	40.0	175.0	75.0
XP000011	BUCKET TRUCK (LENGTH 35 TO 65 FEET)	HOUR	490.0	65.0	300.0	125.0
X0327500	ARROWBOARD (TRAILER MOUNTED)	HOUR	275.0	25.0	175.0	75.0
X0327501	ATTENUATOR, CRASH (TRUCK MOUNTED)	HOUR	275.0	25.0	175.0	75.0