

F.A.I. RTE.	SECTION	COUNTY	TOTAL SHEETS	SHEET NO.
74	72(8,9,9-1)LS-13	PEORIA	17	1
ILLINOIS CONTRACT NO. 68G59				

INDEX OF SHEETS

- 1 COVER SHEET
- 2 JOB SPECIFIC NOTES & COMMITMENTS /
CALENDAR OF LANDSCAPING MAINTENANCE
- 3-4 SUMMARY OF QUANTITIES
- 5-6 SCHEDULE OF QUANTITIES
- 7 OVERALL PLAN
- 8 PLAN SHEET - LAYOUT 1
- 9 PLAN SHEET - LAYOUT 2
- 10 PLAN SHEET - LAYOUT 3
- 11 PLAN SHEET - LAYOUT 4
- 12 PLAN SHEET - LAYOUT 5
- 13 PLAN SHEET - LAYOUT 6
- 14 PLAN SHEET - LAYOUT 7
- 15 PLANTER DETAIL
- 16 TRAFFIC CONTROL
- 17 HERBICIDE DOSAGE CHART

HIGHWAY STANDARDS

- 701101-05 701301-04
- 701106-02 701456-05
- 701201-05 701901-08

FULL SIZE PLANS HAVE BEEN PREPARED USING STANDARD
ENGINEERING SCALES. REDUCED SIZED PLANS WILL NOT
CONFORM TO STANDARD SCALES. IN MAKING MEASUREMENTS
ON REDUCED PLANS, THE ABOVE SCALES MAY BE USED.

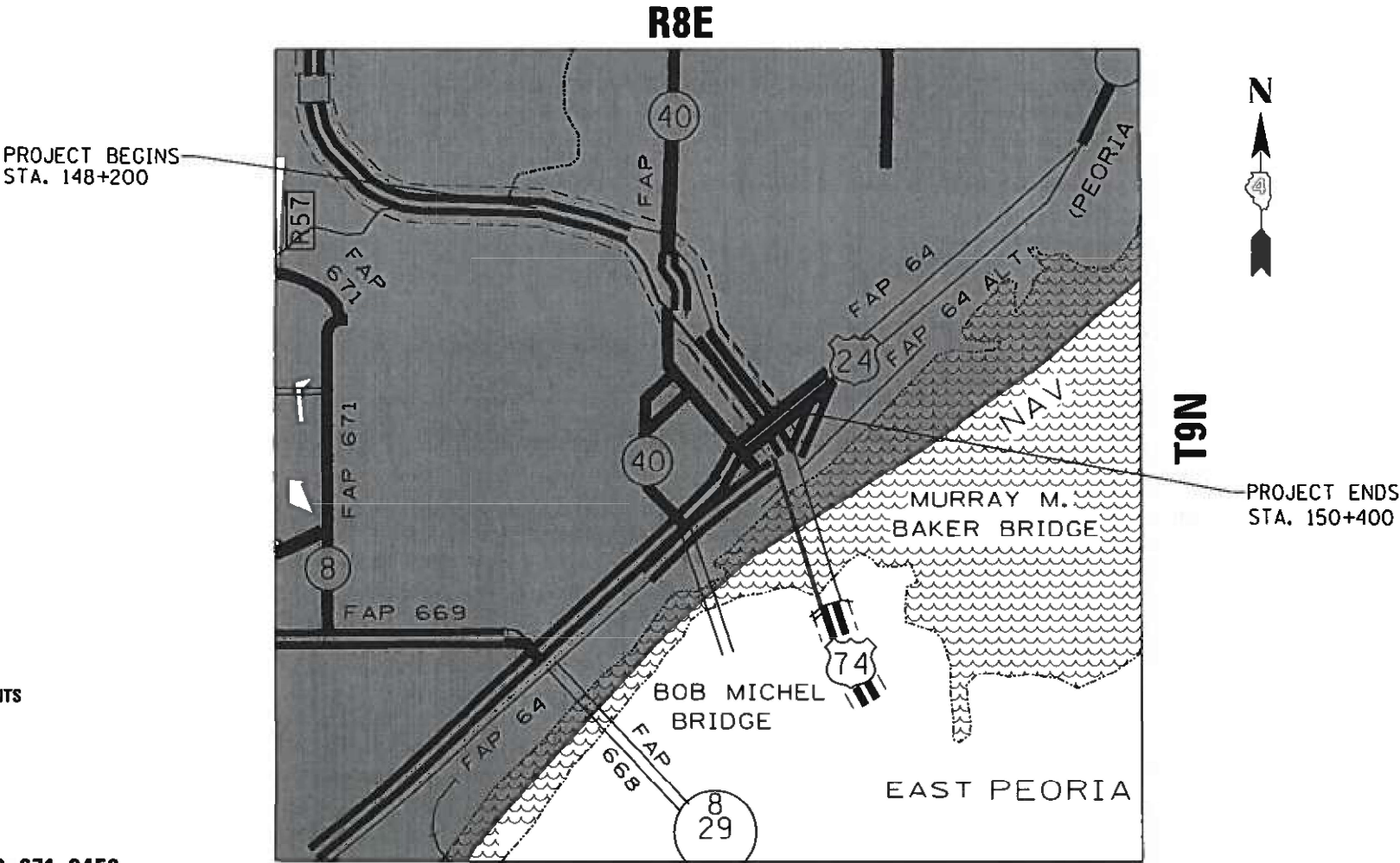
J.U.L.I.E.
JOINT UTILITY LOCATION INFORMATION FOR EXCAVATION
1-800-892-8123
OR 811

PROJECT ENGINEER: NICOLE FAYANT 309-671-3453
PROJECT MANAGER: BRITTANY GAVIN 309-671-4487

CONTRACT NO. 68G59
CATALOG NO. 036234-00D

STATE OF ILLINOIS
DEPARTMENT OF TRANSPORTATION
DIVISION OF HIGHWAYS
**PROPOSED
HIGHWAY PLANS**
FAI 74 ROUTE I-74
SECTION 72(8,9,9-1)LS-13
PROJECT: LANDSCAPING
PEORIA COUNTY

C-94-082-21



GROSS LENGTH = 7,286.20 FT. = 1.38 MILE
NET LENGTH = 7,286.20 FT. = 1.38 MILE

D-94-061-21



DESCRIPTION OF WORK

THIS PROJECT INVOLVES LANDSCAPING MAINTENANCE ALONG
I-74 FROM ELLIS TO THE ILLINOIS RIVER IN PEORIA.

STATE OF ILLINOIS
DEPARTMENT OF TRANSPORTATION

SUBMITTED October 20, 2021

Paul A. Jones REGIONAL ENGINEER

December 10, 2021
Stephen M. Davis ENGINEER OF DESIGN AND ENVIRONMENT

December 10, 2021
Stephen M. Davis DIRECTOR OF HIGHWAYS PROJECT IMPLEMENTATION

PRINTED BY THE AUTHORITY
OF THE STATE OF ILLINOIS

JOB SPECIFIC NOTES

The contractor will be responsible for field verification of locations for all landscaping items. Numbers indicated on the layouts are an estimate and do not reflect the exact total.

The removal of dead underbrush, debris, litter, and other miscellaneous items shall be completed and will be considered included in the cost of the associated pay items.

SELECTIVE CLEARING shall include removal of naturally occurring logs, shrubs, bushes, saplings, weeds, other vegetation and stumps of a diameter less than 6 in. at locations specified by the Roadside Manager. All work will be done in accordance with the special provisions. All costs for removing living and dead plants shall be included in the pay item SELECTIVE CLEARING.

PERENNIAL PLANT CARE shall include mulching, weeding, and edging of the perennial beds. The cost for edging, weeding and mulching shall be included in the pay item for PERENNIAL PLANT CARE.

SHRUB CARE Shall include weeding, replenishing mulch, pruning of shrubs from access control fence debris removal and disposal, insect control, pruning, edging, volunteer trees and other plant care work items for each work cycle as described in the special provisions and as directed by the Roadside Manager. Payment will only be done at locations in which shrubs are actually pruned, trimmed, mulched or have been maintained. Where shrub care is not needed, mulching work shall be paid for at that location per section 109.04.

TREE CARE Shall include weeding, replenishing mulch, debris removal and disposal, insect control, pruning, edging, and other plant care work items for each work cycle as described in the special provisions and as directed by the Roadside Manager. Where pruning is not needed, mulching work shall be paid for at that location per section 109.04.

MOWING (SPECIAL) shall include trimming along walls and foundations. The cost for trimming shall be included in the cost of MOWING (SPECIAL).

Trees, shrubs and perennial plants shall not encroach upon the sidewalks and gutters. The cost to trim these items will be included in the cost of the associated pay items.

PERENNIAL PLANTS

There are several planters along Perry, Monroe, Madison, and Jefferson Streets. The planters in these locations will be filled with plantings listed on the table in the Schedule of Quantities. All weeding and dirt required for these planters shall be included in the pay item for the plants specified.

All vegetation should be trimmed 12” from all access control fences. The cost shall be included in the pay item SHRUB CARE.

WEED CONTROL, BROADLEAF IN TURF NOTES:

- 1. Contact Roadside Manager or Operations Roadside Manager prior to commencing spray activities.
- 2. Spraying must be completed before any other contract activities take place. Two weeks minimum between spraying and planting.
- 3. Non-working equipment shall be repaired immediately with no additional time allotted to the contractor for repairs.
- 4. Spray operators shall keep a copy of contract spray locations with them at all times.
- 5. Wind speed must be < 15 mph in order to perform work.
- 6. Temperature must be > 45 degrees in order to perform work.
- 7. Daily inspections by Roadside Manager during the weed spraying operation.

2021 WORK DATES		CONSTRUCTION WORK	ESTABLISHMENT WORK
FROM	TO		
APRIL 1	OCT 31	Mowing	Mow turf areas to a turf height of 3 inches. (Layout 1, 2, 3, 4, 5 &7) All applicable layouts 1–2 times per month at Engineer’s discretion
MAY 1	OCT 1	Perennial Plant Care	All applicable layouts 1–2 times per month at Engineer’s discretion
MAY 1	MAY 31	Weed Control placed within 5 days of start date	One cycle all layouts
MAY 1	MAY 31	Selective Clearing, Shrub Care, and Tree Care Work cycle must be complete and acceptable on the inspection date of June 1.	1 Time All Layouts

Model: Default
File Name: p:\1\1\dst\pub\ben\leucomp\1\DOT Documents\1\DOT Office\1\District 4\Projects\1468659\1468659-CADD.dgn

CODE NO.	ITEM	UNIT	TOTAL QUANTITY	CONST. CODE
				URBAN
				100 % STATE
				PEORIA COUNTY
				0031
25000110	SEEDING, CLASS 1A	ACRE	0.25	0.25
67100100	MOBILIZATION	L SUM	1	1
A2000420	TREE, ACER NIGRUM (BLACK MAPLE), 2-1/2" CALIPER, BALLED AND BURLAPPED	EACH	1	1
B2001366	TREE, CORNUS FLORIDA (FLOWERING DOGWOOD), 6' HEIGHT, CLUMP FORM, BALLED AND BURLAPPED	EACH	10	10
C2C03424	SHRUB, HYDRANGEA ARBORESCENS ANNABELLE (ANNABELLE SMOOTH HYDRANGEA), 2' HEIGHT CONTAINER	EACH	11	11
C2C03432	SHRUB, HYDRANGEA QUERCIFOLIA (OAKLEAF HYDRANGEA), 2' HEIGHT, CONTAINER	EACH	11	11
D2C02736	EVERGREEN, PINUS NIGRA (AUSTRIAN PINE), 3' HEIGHT, CONTAINER	EACH	5	5
K0012975	PERENNIAL PLANTS, ORNAMENTAL TYPE, 4" POT	UNIT	0.96	0.96
K0012990	PERENNIAL PLANTS, ORNAMENTAL TYPE, GALLON POT	UNIT	0.57	0.57
K0026700	TREE CARE	EACH	157	157
K0026810	SHRUB CARE	EACH	4643	4643
K0026850	PERENNIAL PLANT CARE	SQ YD	7846	7846
K0029618	WEED CONTROL, BROADLEAF IN TURF	GALLON	0.1	0.1
K0029634	WEED CONTROL, PRE-EMERGENT GRANULAR HERBICIDE	POUND	900	900

	USER NAME = eversol	DESIGNED -	REVISED -	STATE OF ILLINOIS DEPARTMENT OF TRANSPORTATION	SUMMARY OF QUANTITIES	F.A.I RTE.	SECTION	COUNTY	TOTAL SHEETS	SHEET NO.
	DRAWN -	REVIS	ED -			74	72(8,9,9-1)LS-13	PEORIA	17	3
	PLOT SCALE = 78.6960' / in.	CHECKED -	REVISED -			CONTRACT NO. 68G59				
	PLOT DATE = 10/28/2021	DATE -	REVISED -			ILLINOIS FED. AID PROJECT				

Model: Default
File Name: p:\1\1\dest\pub\entleucomp\1\DOT Documents\1\DOT Office\District 4\Projects\14_68G59\CADD\ata\CADD\Drawings\1468G59-CADD.dgn

CODE NO.	ITEM	UNIT	TOTAL QUANTITY	CONST. CODE
				URBAN
				100 % STATE
				PEORIA COUNTY
				0031
K1004539	PLANT WATERING	UNIT	6	6
X0321501	WEED BARRIER FABRIC	SQ YD	167	167
X1800002	RIVER ROCK	TON	29	29
X2503110	MOWING (SPECIAL)	ACRE	69	69
X7010216	TRAFFIC CONTROL AND PROTECTION (SPECIAL)	L SUM	1	1
Z0064600	SELECTIVE CLEARING	ACRE	0.25	0.25

	USER NAME = everscl	DESIGNED -	REVISED -	STATE OF ILLINOIS DEPARTMENT OF TRANSPORTATION	SUMMARY OF QUANTITIES	F.A.I RTE.	SECTION	COUNTY	TOTAL SHEETS	SHEET NO.
		DRAWN -	REVISED -			74	72(8,9,9-1)LS-13	PEORIA	17	4
	PLOT SCALE = 78.6960' / in.	CHECKED -	REVISED -			CONTRACT NO. 68G59				
	PLOT DATE = 10/28/2021	DATE -	REVISED -			ILLINOIS FED. AID PROJECT				

Model: Default
FILE: \\nrc-pxw\ulc-aw-bentley.com\PIV\DOT\Documents\DOT Offices\District 4\Projects\DA_68G59\CADD\DA_68G59-CADD.dgn

					LAYOUT LOCATION							
KEY	ITEM	COMMON NAME	UNIT	L1	L2	L3	L4	L5	L6	L7	TOTAL	
	DECIDUOUS TREES											
GD	GYMNOCLADUS DIOICUS	KENTUCKY COFFEE TREE	EACH	0	0	4	0	7	0	0	11	
QA	QUERCUS BICOLOR	SWAMP WHITE OAK	EACH	0	0	15	4	2	4	25	50	
AN	ACER NIGRA	BLACK MAPLE	EACH	0	0	0	0	0	0	0	0	
GB	GINKGO BILOBA	GINKGO	EACH	0	0	7	0	0	0	2	9	
GT	GLEDITSIA TRIACANTHOS	SKYLINE HONEYLOCUST	EACH	0	0	0	0	0	4	0	4	
UR	ULMUS REGAL	REGAL ELM	EACH	0	0	10	0	0	0	13	23	
	ORNAMENTAL TREES											
AC	AMELANCHIER X GRANDIFLORA	APPLE SERVICEBERRY	EACH	0	0	0	2	1	0	3	6	
SA	SYRINGA RETICULATA	JAPANESE LILAC	EACH	0	0	18	0	0	0	0	18	
SP	SYRINGA PEKINENSIS	CHINESE LILAC	EACH	0	0	0	0	7	16	0	23	
MP	MALUS PRAIRIFIRE	PRAIRIE FIRE CRABAPPLE	EACH	0	0	7	3	0	3	0	13	
	EVERGREEN TREES											
PN	PINUS NIGRA	AUSTRIAN PINE	EACH	0	0	0	0		0	0	0	
	TOTAL NUMBER OF TREES		EACH	0	0	61	9	17	27	43	157	
	SHRUBS											
FS	FORSYTHIA x INTERMEDIA	NORTHERN SUN FORSYTHIA	EACH	0	0	90	0	0	165	200	455	
HV	HAMAMELIS VERNALIS	VERNAL WITCH HAZEL	EACH	0	0	100	0	0	0	0	100	
PA	PEROVSKIA ATRIPLICIFOLIA	RUSSIAN SAGE	EACH	0	0	290	200	0	0	0	490	
RA	RHUS AROMATICA	FRAGRANT SUMAC	EACH	0	0	445	0	40	70	543	1098	
RG	RHUS GLABRA	SMOOTH SUMAC	EACH	0	0	55	0	0	0	0	55	
SPA	SYRINGA PATULA MISS KIM	MISS KIM LILAC	EACH	0	0	300	165	60	0	90	615	
RS	ARONIA MELANOCARPA	BLACK CHOKEBERRY	EACH	0	0	525	138	9	34	0	706	
RH	ROBINIA HISPIDA	BRISTLY LOCUST	EACH	0	0	0	30	0	11	0	41	
RRC**	ROSA	ROSE	EACH	0	0	0	0	0	0	0	0	
	EVERGREEN SHRUBS											
JH*	JUNIPERUS HORIZONTALIS	HUGHES CREEPING JUNIPER	EACH	0	0	0	40	108	295	90	533	
JC	JUNIPERUS CHINENSIS	KALLAYS COMPACTA	EACH	0	0	100	230	80	120	20	550	
	TOTAL NUMBER OF SHRUBS		EACH	0	0	1905	803	297	695	943	4643	
	TOTAL PERENNIAL PLANT CARE		SQ YD	3487	512	1349	1600	297	0	601	7846	

*** JUNIPERUS HORIZONTALIS shall have volunteer growth pulled during the Sprng and Fall. Cost to remove volunteer growth will not be paid separately, but will be included in the cost of SHRUB CARE.**

**** ALL RRC EACH ITEMS ARE COUNTED AS PERENNIAL PLANT CARE AND REFLECTED IN PPC SQ YD AND WILL NOT BE PAID SEPARATLY AS SHURB CARE.**

LEGEND:
L1 LANDSCAPE LAYOUT-1
L2 LANDSCAPE LAYOUT-2
L3 LANDSCAPE LAYOUT-3
L4 LANDSCAPE LAYOUT-4
L5 LANDSCAPE LAYOUT-5
L6 LANDSCAPE LAYOUT-6
L7 LANDSCAPE LAYOUT-7

	USER NAME = everscl	DESIGNED -	REVISED -	STATE OF ILLINOIS DEPARTMENT OF TRANSPORTATION	SCHEDULE OF QUANTITIES				F.A.I. RTE.	SECTION	COUNTY	TOTAL SHEETS	SHEET NO.
		DRAWN -	REVISED -						74	72(8,9,9-1)L5-13	PEORIA	17	5
	PLOT SCALE = 78,6960' = 1 in.	CHECKED -	REVISED -						CONTRACT NO. 68G59				
	PLOT DATE = 10/28/2021	DATE -	REVISED -		SCALE:	SHEET	OF	SHEETS	STA.	TO STA.	ILLINOIS FED. AID PROJECT		

SEEDING, CLASS 1A (25000110)	
LOCATION	SQ YD
LAYOUT 5	329
LAYOUT 7	106
TOTAL	435
TOTAL	.25 ACRES

MOBILIZATION (67100100)		
LOCATION	UNIT	QTY
JOBSITE	L. SUM	1
TOTAL	1	

TREE CARE (K0026700)	
LOCATION	EACH
LAYOUT 1	0
LAYOUT 2	0
LAYOUT 3	61
LAYOUT 4	9
LAYOUT 5	17
LAYOUT 6	27
LAYOUT 7	43
TOTAL	157

SHRUB CARE (K0026810)	
LOCATION	SQ YD
LAYOUT 1	0
LAYOUT 2	0
LAYOUT 3	1905
LAYOUT 4	803
LAYOUT 5	297
LAYOUT 6	695
LAYOUT 7	943
TOTAL	4643

PERENNIAL PLANT CARE (K0026850)	
LOCATION	SQ YD
LAYOUT 1	3487
LAYOUT 2	512
LAYOUT 3	1349
LAYOUT 4	1600
LAYOUT 5	297
LAYOUT 6	0
LAYOUT 7	601
TOTAL	7846

NEW PLANTINGS		LAYOUT LOCATION							
ITEM	UNIT	L1	L2	L3	L4	L5	L6	L7	TOTAL
New Trees to be planted									
ACER NIGRA BLACK MAPLE	EACH	0	0	1	0	0	0	0	1
PINUS HELDREICHI COMPACT GEM	EACH	0	0	0	0	5	0	0	5
CORNUS FLORIDA DOG WOOD	EACH	0	0	0	0	5	0	0	5
New Shrubs to be planted									
SHRUB, HYDRANGEA ARBORESCENS ANNABELLE (NCHA2)	EACH	0	0	11	0	0	0	0	11
SHRUB, HYDRANGEA PANICULATA (LITTLE QUICK FIRE HYDRANGEA), 2' HEIGHT, CONTAINER GROWN	EACH	0	0	0	0	0	0	11	11
Layout 7 north of I-74 on right and left side of Jefferson Street									UNIT
Miscanthus Sinesis (Encore)	EACH	0	0	0	0	0	0	17	0.17
Planter Box Plants									
PERENNIAL PLANTS 1, ORNAMENTAL TYPE, GALLON Dipladenias (Red)	EACH	0	0	0	0	10	20	10	0.4
PERENNIAL PLANTS, ORNAMENTAL TYPE, 4" POT									UNIT
Green Sweet Potato Vine	EACH	0	0	0	0	2	4	2	0.96
Dracaena Spike "Purple Tower"	EACH	0	0	0	0	6	12	6	
Cordyline "Red Sister"	EACH	0	0	0	0	4	8	4	
‘Orange Marmalade’ Lantana	EACH	0	0	0	0	10	20	10	
Purple Sweet Potato Vines	EACH	0	0	0	0	2	4	2	
TOTAL		0	0	0	0	24	48	24	
	Note: 1 unit = 100 plants								

WEED CONTROL, PRE-EMERGENT GRANULAR HERBICIDE (K0029634)		
LOCATION	UNIT	QTY
JOBSITE	POUND	900
TOTAL	900	

PLANT WATERING (K1004539)	
LOCATION	GALLON
JOBSITE	6000
TOTAL	6000
TOTAL	6 UNITS

1 UNIT = 1000 Gallons

WEED BARRIER FABRIC (X0321501)	
LOCATION	SQ YD
LAYOUT 5	167
TOTAL	167

TRAFFIC CONTROL AND PROTECTION (SPECIAL) (X7010216)		
LOCATION	UNIT	QTY
JOBSITE	L. SUM	1
TOTAL	1	

WEED CONTROL, BROADLEAF IN TURF (K0029618)		
LOCATION	UNIT	QTY
JOBSITE	GALLON	0.1
TOTAL	0.1	

Perenial Plant Care Work Schedule	
One full cycle of work, as directed by specifications, for each listed month is required for all Layouts	April
	May
	June
	July
	August
	September
October	

Mowing Work Schedule		
1-2 Mowings (at discretion of Engineer) are required per listed month, for all layouts	MONTH	QTY
	May	2
	June	2
	July	2
	August	1
	September	1
October		1

MOWING (SPECIAL) (X2503110)		
LOCATION	SQ FT	ACRES
LAYOUT 1	17658.68	0.73
LAYOUT 2	46255.5	0.83
LAYOUT 3	102282.3	2.34
LAYOUT 4	49961.9	1.16
LAYOUT 5	40964.5	0.94
LAYOUT 6	0	0
LAYOUT 7	72656.8	1.66
TOTAL	7.7	

Total for contract = 69 Acres
(9 mowings per contract)

SELECTIVE CLEARING (Z0064600)	
LOCATION	SQ YD
LAYOUT 1	0
LAYOUT 2	0
LAYOUT 3	0
LAYOUT 4	0
LAYOUT 5	180
LAYOUT 6	0
LAYOUT 7	106
TOTAL	286 SQ YD
TOTAL	.25 ACRES

RIVER ROCK (X1800002)	
LOCATION	TON
LAYOUT 5	29
TOTAL	29

MODEL: Default
FILE: N:\User\paw\bulletect-aw\bulletect-aw.com\FW\DOT-Documents\DOT-Office\District 4\Projects\DA_68G59\CADD\Drawings\DA68G59-CADD.dgn

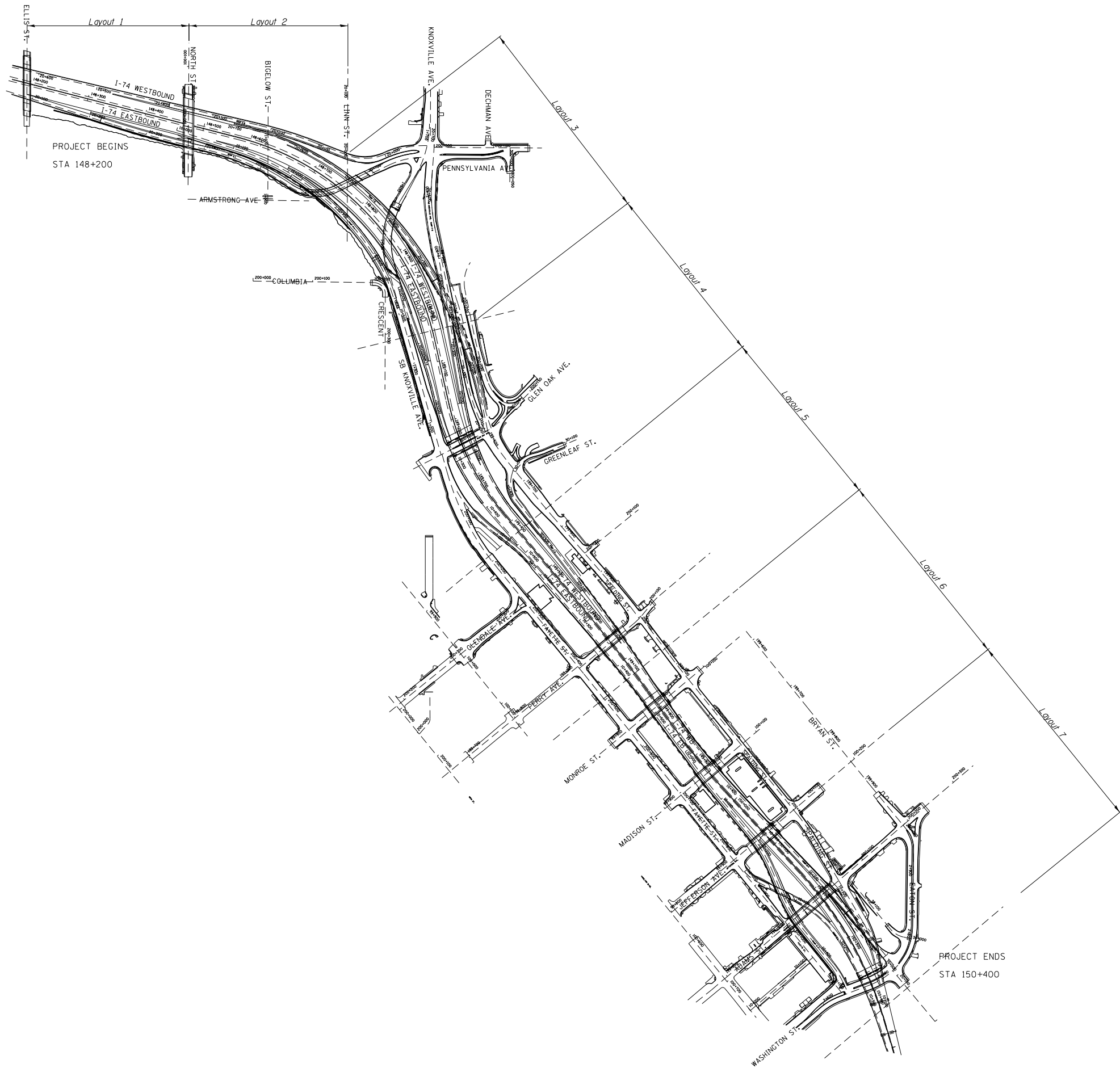
USER NAME = everscl	DESIGNED -	REVISED -
	DRAWN -	REVISED -
PLOT SCALE = 78.6960' * / in.	CHECKED -	REVISED -
PLOT DATE = 10/28/2021	DATE -	REVISED -

STATE OF ILLINOIS
DEPARTMENT OF TRANSPORTATION

SCHEDULE OF QUANTITIES

SCALE:	SHEET	OF	SHEETS	STA.	TO STA.
--------	-------	----	--------	------	---------

F.A.J. RTE.	SECTION	COUNTY	TOTAL SHEETS	SHEET NO.
74	72(8,9,9-1)L5-13	PEORIA	17	6
CONTRACT NO. 68G59				
ILLINOIS FED. AID PROJECT				



Model: Default
File: \\nrt101\project-aw\hwy.com\PIV\DOT\Documents\DOT_Offices\District 4\Projects\DA_68G59\CADD\Drawings\DA68G59-CADD.dgn

USER NAME	= everscl	DESIGNED	-	REVISED	-
DRAWN	-	REVISION	-	REVISION	-
PLOT SCALE	= 78.6960 * / in.	CHECKED	-	REVISION	-
PLOT DATE	= 10/28/2021	DATE	-	REVISION	-

STATE OF ILLINOIS
DEPARTMENT OF TRANSPORTATION

OVERALL PLAN

SCALE: SHEET OF SHEETS STA. TO STA.

F.A.I. RTE.	SECTION	COUNTY	TOTAL SHEETS	SHEET NO.
74	72(8,9,9-1)LS-13	PEORIA	17	7
CONTRACT NO. 68G59				
ILLINOIS FED. AID PROJECT				

NOTE: Stamped stations on pavement are in the metric system.



HIGH SCHOOL PARKING LOT

PEORIA
CENTRAL
HIGH SCHOOL

ELLIS STREET

NORTH STREET

3487 SY PCC

MOWING AREA
0.4054 Acre

I-74 WESTBOUND

148+300

I-74 EASTBOUND

148+400

148+200

LEGEND



MOWING



PERENNIAL PLANT CARE

MOWING AREA LAYOUT 1 - 0.73 ACRES

MOWING AREA
0.3281 Acre

MODEL: Default
FILE: \\nrt1pc-pw-bentley.com\FWIDOT\Documents\DOT_Offices\District_4\Projects\DA_68G59\CADD\ba CAD\Drawings\DA68G59-CADD.dgn

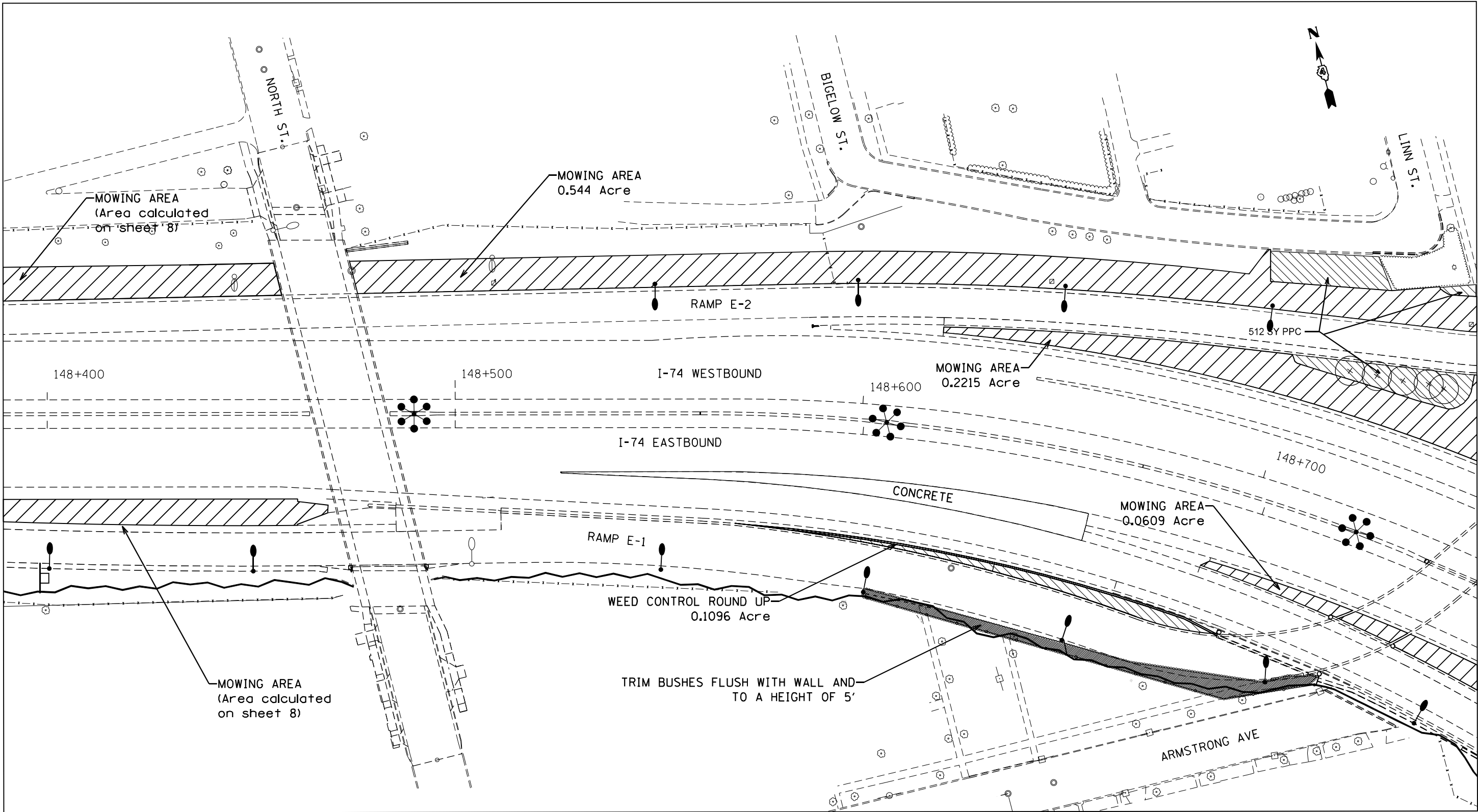
USER NAME = everscl	DESIGNED -	REVISED -
	DRAWN -	REVISED -
PLOT SCALE = 78,6960' = 1 in.	CHECKED -	REVISED -
PLOT DATE = 10/28/2021	DATE -	REVISED -

STATE OF ILLINOIS
DEPARTMENT OF TRANSPORTATION

PLAN SHEET - LAYOUT 1

SCALE: SHEET OF SHEETS STA. TO STA.

F.A.I. RTE.	SECTION	COUNTY	TOTAL SHEETS	SHEET NO.
74	72(8,9,9-1)LS-13	PEORIA	17	8
CONTRACT NO. 68G59				
ILLINOIS FED. AID PROJECT				



LEGEND

-  MOWING

 SHRUBS

 EVERGREEN TREE

 SMALL ORNAMENTAL TREE
-  SHADE TREE (5' DIA. MULCH SAUCER-TYP. -FOR ALL TREES & SHRUBS)

 PERENNIAL PLANT CARE (PPC)

 PLANT KEY QUANTITY OF SPECIFIED PLANT
-  SHRUB CARE

 SHRUBS DENOTED WITH AN • SHALL BE TRIMMED TO 5'

 SELECTIVE CLEARING
-  SEEDING, CLASS 1A

 STONE DUMPED RIPRAP CLASS 1A

MOWING AREA LAYOUT 2 - 0.83 ACRES
WEED CONTROL ROUND UP - 0.11 ACRES

MODEL: Default
FILE: \\nrt101-arw-bentley.com\\P\\DOT\\Documents\\DOT Office\\District 4\\Projects\\D4_68G59\\CADD\\Data CAD\\Drawings\\D468G59-CADD.dgn

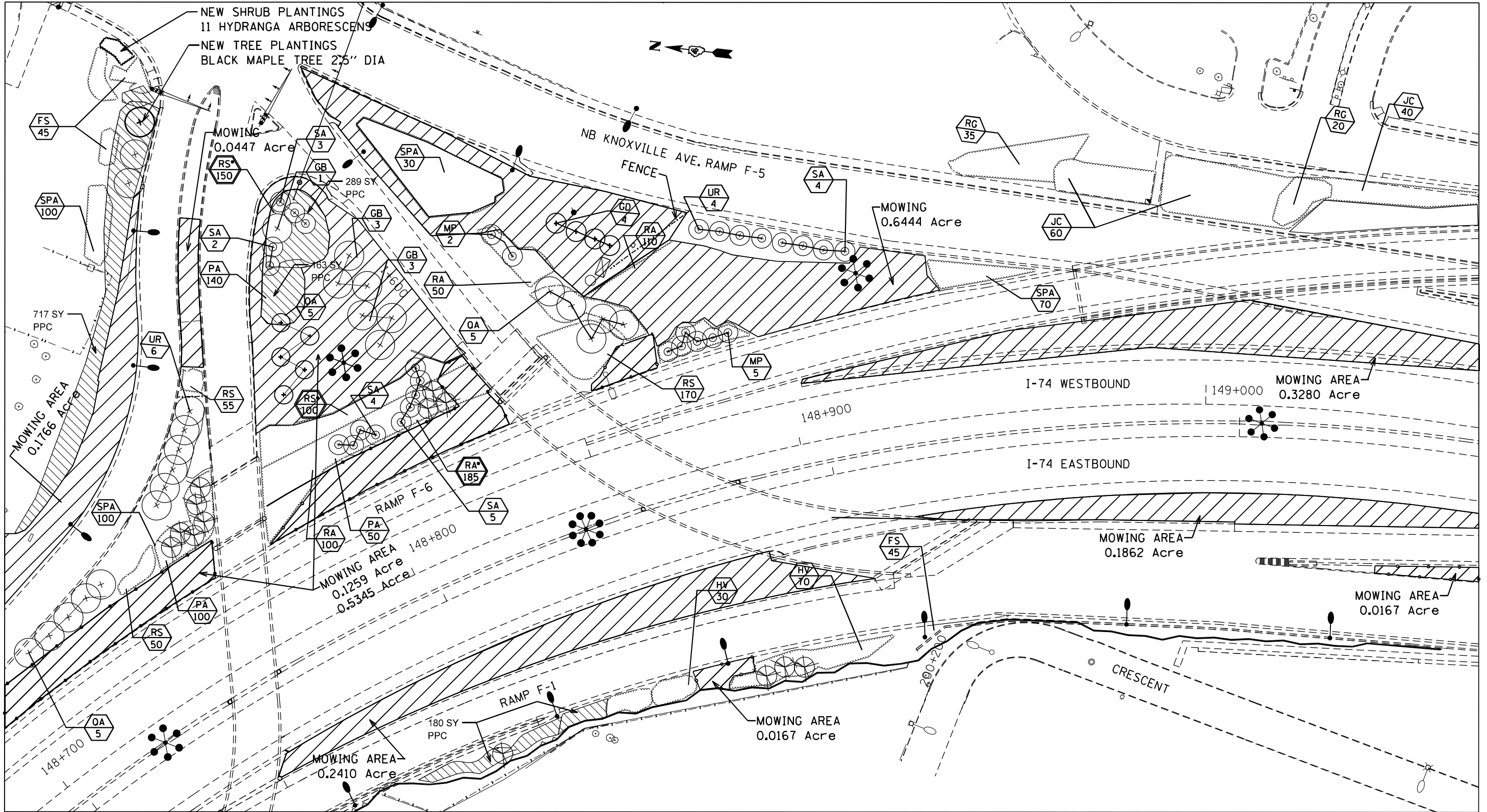
USER NAME = everscl	DESIGNED -	REVISED -
	DRAWN -	REVISED -
PLOT SCALE = 78,6960' = 1" / in.	CHECKED -	REVISED -
PLOT DATE = 10/28/2021	DATE -	REVISED -

STATE OF ILLINOIS
DEPARTMENT OF TRANSPORTATION

PLAN SHEET - LAYOUT 2

SCALE: SHEET OF SHEETS STA. TO STA.

F.A.I. RTE.	SECTION	COUNTY	TOTAL SHEETS	SHEET NO.
74	72(8,9,9-1)LS-13	PEORIA	17	9
CONTRACT NO. 68G59				
ILLINOIS FED. AID PROJECT				



LEGEND

- | | | | | | | | |
|--|-----------------------|--|--|--|---|--|------------------------------|
| | MOWING | | SHADE TREE (5' DIA. MULCH SAUCER-TYP. -FOR ALL TREES & SHRUBS) | | SHRUB CARE | | SEEDING, CLASS 1A |
| | SHRUBS | | PERENNIAL PLANT CARE (PPC) | | SHRUBS DENOTED WITH AN * SHALL BE TRIMMED TO 5' | | STONE DUMPED RIPRAP CLASS 1A |
| | EVERGREEN TREE | | PLANT KEY QUANTITY OF SPECIFIED PLANT | | SELECTIVE CLEARING | | |
| | SMALL ORNAMENTAL TREE | | | | | | |

MOWING AREA LAYOUT 3 - 2.34 ACRES

In all Juniperus Chinensis beds the volunteer growth needs to be remove
Trim all (HV) HAMAMELIS VERNALIS to 5' height
Cost included in SHRUB CARE

MODEL: Default
FILE: N:\miller-aw-bentley.com\p\w\DOT\Documents\DOT Office\District 4\Projects\DA 68G59\CADD\DA 68G59\CADD\Drawings\DA68G59-CADD.dgn

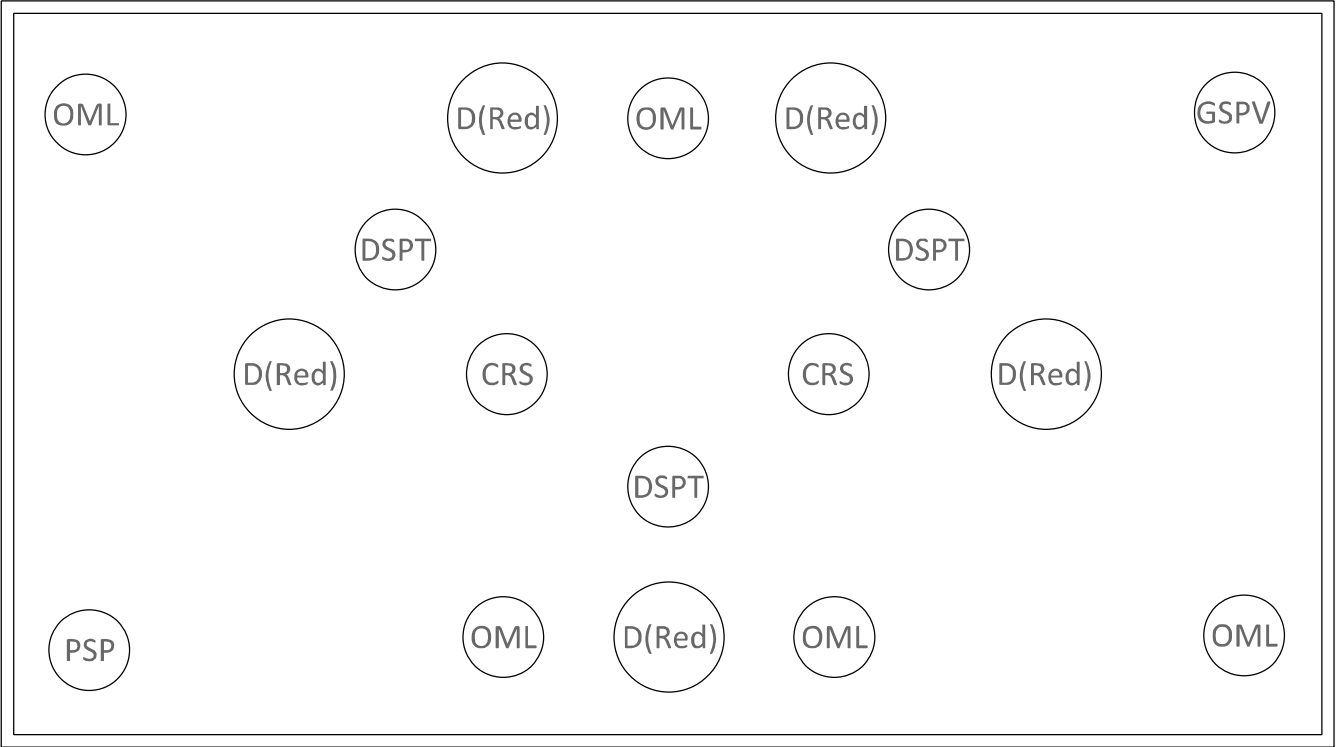
USER NAME = everscl	DESIGNED -	REVISED -
	DRAWN -	REVISED -
PLOT SCALE = 78,6960' = 1 in.	CHECKED -	REVISED -
PLOT DATE = 10/28/2021	DATE -	REVISED -

STATE OF ILLINOIS
DEPARTMENT OF TRANSPORTATION

PLAN SHEET - LAYOUT 3

SCALE: SHEET OF SHEETS STA. TO STA.

F.A.I. RTE.	SECTION	COUNTY	TOTAL SHEETS	SHEET NO.
74	72(8,9,9-1)LS-13	PEORIA	17	10
CONTRACT NO. 68G59				
ILLINOIS FED. AID PROJECT				



LEGEND

- CRS

Cordyline "Red Sister" (2 Each Planter)
- GSPV

Green Sweet Potato Vine (1 Each Planter)
- DSPT

Dracaena Spike Purple Tower (3 Each Planter)
- OML

"Orange Marmalade" Lantana (5 Each Planter)
- PSP

Purple Sweet Potato Vines (1 Each Planter)
- D(Red)

Dipladenias (Red) (5 Each Planter)

PLANTER LOCATIONS:

2 at Perry Avenue
2 at Monroe Street
2 at Madison Street
2 at Jefferson Avenue

MODEL: Default
FILE: N:\Users\pawuliet-aw.bentley.com\PIV\DOT Documents\DOT_Offices\District 4\Projects\DA_68G59\CADD\Drawings\DA68G59-CADD.dgn

	USER NAME = everscl	DESIGNED -	REVISED -	STATE OF ILLINOIS DEPARTMENT OF TRANSPORTATION	PLANTER DETAIL					F.A.I. RTE.	SECTION	COUNTY	TOTAL SHEETS	SHEET NO.
		DRAWN -	REVISED -							74	72(8,9,9-1)LS-13	PEORIA	17	15
	PLOT SCALE = 78,6960 ' / in.	CHECKED -	REVISED -							CONTRACT NO. 68G59				
	PLOT DATE = 10/28/2021	DATE -	REVISED -		SCALE:	SHEET	OF	SHEETS	STA.	TO	STA.	ILLINOIS	FED. AID PROJECT	

MODEL: Default
FILE: \\miller-gw.bentley.com\\P\\V\\DOT\\Documents\\DOT Office\\District 4\\Project\\D4_68G59\\CAD\\Data\\CAD\\Drawings\\D468G59-CADD.dgn

HERBICIDE DOSAGE CHART				
WATER	MILESTONE VM*	DRIFT CONTROL **	NON-IONIC SURFACTANT***	ACRES OF R.O.W.
(GALLONS)	(OZ.)	(OZ.)	(PINTS)	ACRE
40	6	3.2	0.8	1
50	7.5	4	1	1.25
100	15	8	2	2.5
200	30	16	4	5
300	45	24	6	7.5
400	60	32	8	10
500	75	40	10	12.5
600	90	48	12	15
700	105	56	14	17.5
800	120	64	16	20
900	135	72	18	22.5
1000	150	80	20	25
1100	165	88	22	27.5
1200	180	96	24	30
1300	195	104	26	32.5
1400	210	112	28	35
1500	225	120	30	37.5

- * BASED ON 6 OUNCES OF MILESTONE VM FOR EACH 1.0 ACRE
** BASED ON 8 OUNCES OF DRIFT CONTROL AGENT PER 100 GALLONS
*** BASED ON 2 PINTS OF NON-IONIC SURFACTANT FOR EACH 100 GALLONS OF WATER

Notes:

1. Suggested rate of water per acre. Refer to product label for verification.
2. Spraying machine shall be calibrated to deliver 6 oz of herbicide per acre 72 hr prior to job start.
3. Spot checks will be performed to check for herbicide delivery accuracy.

WEED SPRAYING NOTES:

Some Perennial plants are located in the weed spray location. Removal of all vegetation and debris except for Perennial Plants shall be completed prior to weed spraying. This work shall be included in the pay item for PERENNIAL PLANT CARE.

Weed Spraying must be completed at the beginning of the contract. No planting can be completed until after two weeks have passed. The Roadside Manager must approve of planting start dates.

See sheet 17 for Milestone Dosing Chart.

FOR INFORMATION IN CASE OF
A CHEMICAL EMERGENCY CALL:

DOW AGRO AT 1-800-263-1196

	USER NAME = everscl	DESIGNED -	REVISED -	STATE OF ILLINOIS DEPARTMENT OF TRANSPORTATION	HERBICIDE DOSAGE CHART				F.A.J RTE.	SECTION	COUNTY	TOTAL SHEETS	SHEET NO.
		DRAWN -	REVISED -						74	72(8,9,9-1)LS-13	PEORIA	17	17
	PLOT SCALE = 78,6960' +/- in.	CHECKED -	REVISED -						CONTRACT NO. 68G59				
	PLOT DATE = 10/28/2021	DATE -	REVISED -		SCALE:	SHEET	OF	SHEETS	STA.	TO STA.	ILLINOIS FED. AID PROJECT		