

|                    |                |           |
|--------------------|----------------|-----------|
| FAU ROUTE          | SECTION        | COUNTY    |
| 9257               | 06-00011-02-RP | ST. CLAIR |
| CONTRACT NO. 97448 |                | ILLINOIS  |

**THOUVENOT, WADE & MOERCHEN, INC.**  
ENGINEERS ♦ SURVEYORS ♦ PLANNERS



**CORPORATE OFFICE**

4940 OLD COLLINSVILLE RD.  
SWANSEA, ILLINOIS 62226  
TEL (618) 624-4488  
FAX (618) 624-6888  
info@twm-inc.com

**CARBONDALE OFFICE**

206 WEST COLLEGE STREET  
CARBONDALE, ILLINOIS 62901  
TEL (618) 549-8844  
FAX (618) 549-8450  
info@twm-inc.com

**EDWARDSVILLE OFFICE**

1015B CENTURY DRIVE  
EDWARDSVILLE, ILLINOIS 62025  
TEL (618) 656-4040  
FAX (618) 656-4343  
info@twm-inc.com

**ST. CHARLES OFFICE**

400 NORTH 5TH ST., SUITE 101  
ST. CHARLES, MISSOURI 63301  
TEL (636) 724-8300  
FAX (636) 724-8304  
info@twm-inc.com

**WATERLOO OFFICE**

113 SOUTH MAIN STREET  
WATERLOO, ILLINOIS 62298  
TEL (618) 939-5050  
FAX (618) 939-3938  
info@twm-inc.com

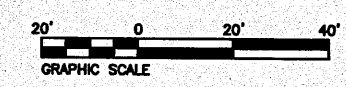
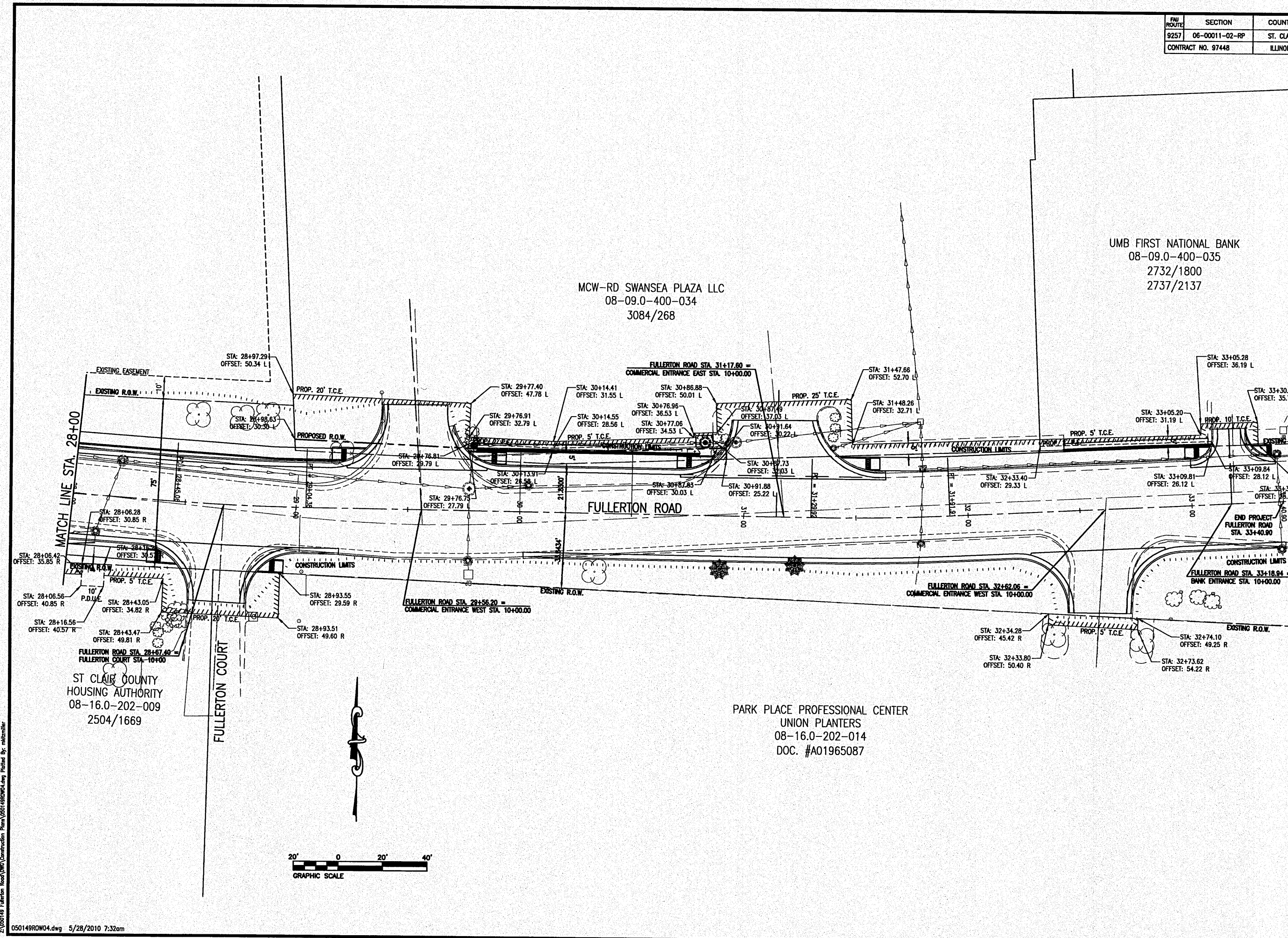
| PROFESSIONAL REGISTRATIONS          | LICENSE NO. |
|-------------------------------------|-------------|
| ILLINOIS PROFESSIONAL DESIGN FIRM   | 184-001220  |
| PROFESSIONAL ENGINEERING CORP.      | 62-035370   |
| PROFESSIONAL STRUCTURAL ENGR. CORP. | 81-005202   |
| ILLINOIS PROF. LAND SURVEYING CORP. | 048-000029  |
| MISSOURI PROFESSIONAL ENGR. CORP.   | NC 001528   |
| MISSOURI LAND SURVEYING CORP.       | NC 000346   |

RIGHT OF WAY PLAN

FULLERTON ROAD WIDENING  
VILLAGE OF SWANSEA  
ST. CLAIR COUNTY, ILLINOIS

| REV. | DATE | DESCRIPTION |
|------|------|-------------|
| △    |      |             |
| △    |      |             |
| △    |      |             |

|   |   |
|---|---|
| PLAN STATUS:                                |   |
| <b>FINAL</b>                                |   |
| <input type="checkbox"/> ISSUED FOR REVIEW  | <input type="checkbox"/> ISSUED FOR BIDDING |
| <input type="checkbox"/> ISSUED FOR CONSTR. | <input type="checkbox"/> RECORD DRAWING     |
| DRAWN BY: JJV                               | SHEET                                       |
| DESIGNED BY: JJV                            | <b>30</b>                                   |
| CHECKED BY: RSD                             | OF 69 SHEETS                                |
| APPROVED BY: JJV                            | PROJECT DESCRIPTION                         |
| PROJECT NUMBER: T07050149                   |   |



PARK PLACE PROFESSIONAL CENTER  
UNION PLANTERS  
08-16.0-202-014  
DOC. #A01965087

ST. CLAIR COUNTY  
HOUSING AUTHORITY  
08-16.0-202-009  
2504/1669

MCW-RD SWANSEA PLAZA LLC  
08-09.0-400-034  
3084/268

UMB FIRST NATIONAL BANK  
08-09.0-400-035  
2732/1800  
2737/2137