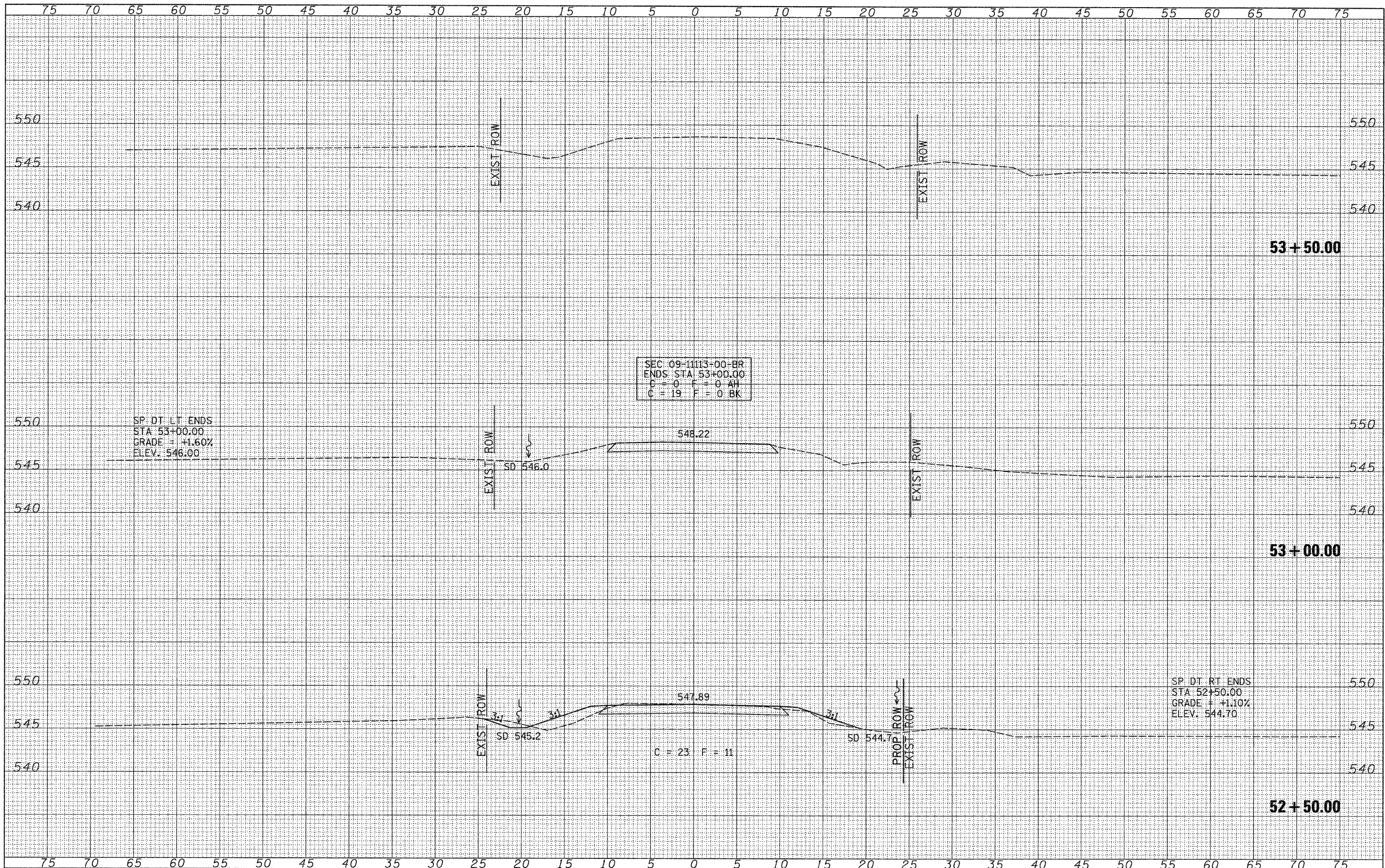


DATE	
BY	
FINAL SURVEY	
NOTED BOOK	
NO.	
SURVEYED	
PLOTTED	
TEMPLATE	
AREAS CHECKED	

DATE	
BY	
ORIGINAL SURVEY	
NOTED BOOK	
NO.	
SURVEYED	
PLOTTED	
TEMPLATE	
AREAS CHECKED	



FILE NAME = V:\Bridge\2800 - Pike\2800\shsta.dgn	USER NAME = othomas	DESIGNED -	REVISED -	<b>PIKE COUNTY TOWNSHIP ROAD 359 OVER HONEY CREEK</b>	<b>CROSS SECTIONS</b>		RT. SECTION COUNTY TOTAL SHEETS SHEET NO.
PLOT SCALE = 5,0000' / IN.	CHECKED -	REVISED -	REVISED -		TR 359 09-11113-00-BR PIKE 28 28		
PLOT DATE = 9/8/2010	DATE -	REVISED -	REVISED -		CONTRACT NO. 93540		
					FED. ROAD DIST. NO. 7 ILLINOIS FED. AID PROJECT BROS-0149(041)		
				SCALE: 1"=5'-0"	SHEET NO. 12 OF 12 SHEETS	STA. 52+50.00 TO STA. 53+50.00	