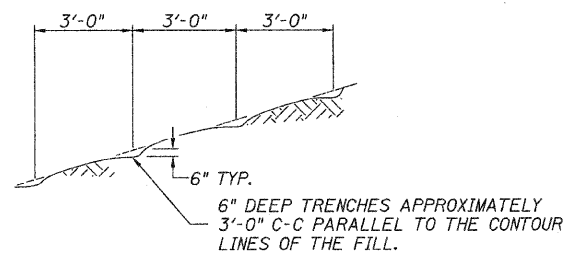
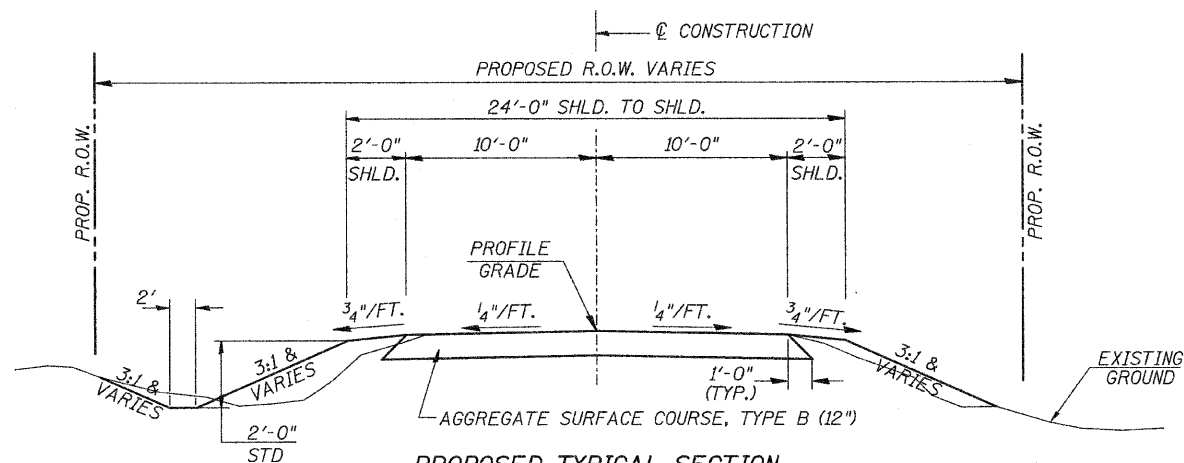


PROPOSED FIELD ENTRANCE
STA 50+83 LT



NOTE: ALL SLOPES 3:1 OR STEEPER AND GREATER THAN 5' IN HEIGHT SHALL BE CONTOUR PLOWED AS SHOWN IN DETAIL. COST SHALL BE INCLUDED WITH SEEDING, CLASS 2 (SPECIAL).

DETAIL OF CONTOUR PLOWING

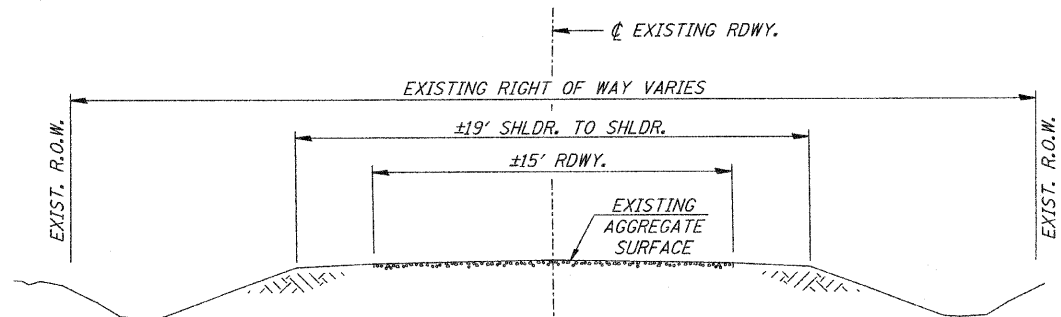


PROPOSED TYPICAL SECTION

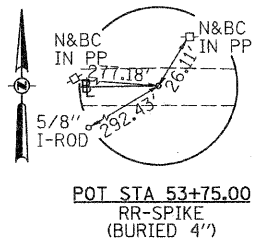
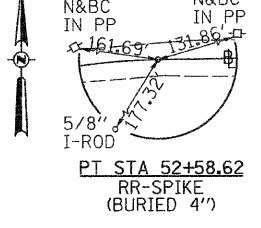
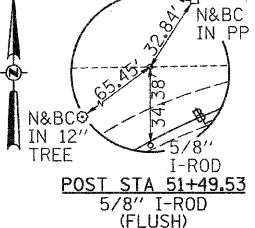
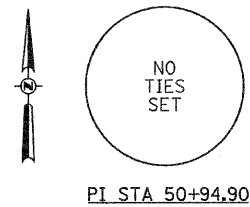
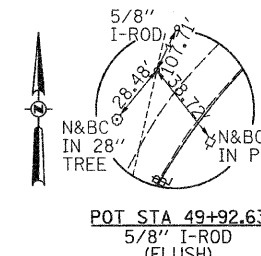
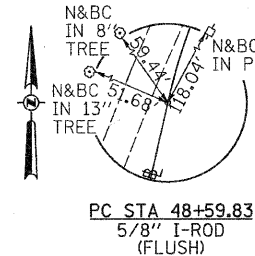
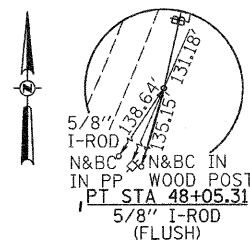
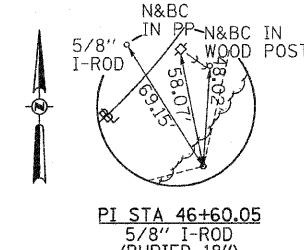
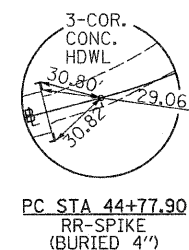
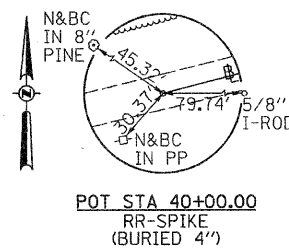
STA. 40+50.00 TO STA. 43+20.50
STA. 44+59.50 TO STA. 53+00.00

BRIDGE OMISSION
STA. 43+20.50 TO STA. 44+59.50

CONSTRUCT GUARDRAIL
SHOULDER WIDENING IN
ACCORDANCE WITH STD 630301



EXISTING TYPICAL SECTION



GENERAL NOTES

PLAN QUANTITIES FOR TREE REMOVAL HAVE BEEN BASED ON ALL TREES WITHIN THE LIMITS OF CONSTRUCTION. THIS QUANTITY MAY BE REVISED DURING CONSTRUCTION, AT THE DIRECTION OF THE ENGINEER, BY DELETING FROM THE TREE REMOVAL QUANTITIES, SUCH TREES THAT DO NOT INTERFERE WITH THE PROPOSED CONSTRUCTION.

THE REMOVAL OF EXISTING AGGREGATE SURFACE AND GRAVEL OR CRUSHED STONE BASE COURSE WHICH MAY BE NECESSARY FOR THE CONSTRUCTION OF THE NEW BRIDGE SHALL BE REMOVED AS EARTH EXCAVATION AND NO COMPENSATION WILL BE ALLOWED FOR ADDITIONAL LABOR OR EQUIPMENT REQUIRED.

ALL WASTE OR UNDESIRABLE MATERIAL AS IDENTIFIED BY THE ENGINEER SHALL BE DISPOSED OF OUTSIDE THE LIMITS OF THE RIGHT OF WAY AT THE CONTRACTOR'S EXPENSE.

ALL EXISTING PRIVATELY OWNED UTILITIES REQUIRING ADJUSTMENT WILL BE MADE BY THE UTILITY COMPANY INVOLVED. WHERE NO PROVISIONS HAVE BEEN MADE FOR ADJUSTMENTS ON THE PLANS, NO ADDITIONAL COMPENSATION WILL BE ALLOWED DUE TO DELAYS OR INCONVENIENCES CAUSED BY THE SAID UTILITY ADJUSTMENTS.

THE PROFILE GRADE ELEVATIONS SHOWN ON THE PLAN AND PROFILE SHEETS AND IN THE STATION CROSS SECTIONS ARE TO THE TOP OF THE FINISHED SURFACE.

ANY REFERENCE TO STANDARDS THROUGHOUT THE PLANS SHALL BE INTERPRETED TO BE THE LATEST STANDARDS OF THE ILLINOIS DEPARTMENT OF TRANSPORTATION

THE LOCATION OF UNDERGROUND UTILITIES SHOWN ON THE PLANS REPRESENTS THE BEST KNOWLEDGE OF THE COUNTY. IT SHALL BE THE CONTRACTOR'S RESPONSIBILITY TO VERIFY LOCATIONS OF UNDERGROUND INSTALLATIONS BEFORE STARTING CONSTRUCTION OPERATIONS. THE CONTRACTOR SHALL INDEMNIFY THE COUNTY, ITS OFFICERS AND EMPLOYEES AGAINST ALL CLAIMS DUE TO DAMAGE TO CORPORATE OR PRIVATE PROPERTY RESULTING FROM HIS CONSTRUCTION OPERATIONS AS DESCRIBED IN ARTICLES 107.20 AND 107.26 OF THE STANDARD SPECIFICATIONS.

THE CONTRACTOR MAY BE REQUIRED TO CONDUCT SOME OF HIS GRADING AND TRENCHING OPERATIONS AROUND TRANSMISSION POLES AND UNDER TRANSMISSION LINES. THE ADDED COST OF SO DOING SHALL BE INCLUDED IN THE COST OF EARTH EXCAVATION.

WHERE SECTION OR SUBSECTION MONUMENTS ARE ENCOUNTERED, THE ENGINEER SHALL BE NOTIFIED BEFORE SUCH MONUMENTS ARE REMOVED. THE CONTRACTOR SHALL PROTECT AND PRESERVE PROPERTY MARKERS UNTIL THE OWNER, AN AUTHORIZED SURVEYOR, OR AGENT, HAS WITNESSED OR OTHERWISE REFERENCED THEIR LOCATION.

ALL ELEVATIONS SHOWN REFER TO AN U.S.G.S. MEAN SEA LEVEL DATUM.

FILE NAME =	USER NAME = othomes	DESIGNED -	REVISED -
V:\Bridge\2800 - Pike\2800\1001.dgn		DRAWN -	REVISED -
		CHECKED -	REVISED -
		DATE -	REVISED -

**PIKE COUNTY
TOWNSHIP ROAD 359
OVER HONEY CREEK**

GENERAL NOTES, TYPICAL SECTIONS, TIE POINTS, DETAILS

SCALE: NONE SHEET NO. 1 OF 1 SHEETS STA. 40+50.00 TO STA. 53+00.00

RTE.	SECTION	COUNTY	TOTAL SHEETS	SHEET NO.
TR 359	09-11113-00-BR	PIKE	28	2
CONTRACT NO. 93540			FED. ROAD DIST. NO. 7 ILLINOIS	
			FED. AID PROJECT BROS-014904D	